



**COLUMBIA POLICE DEPARTMENT  
COLUMBIA, MISSOURI**

# **COMMUNITY OUTREACH UNIT**

---

**CITIZEN SURVEY RESULTS  
CRIME DATA  
ANALYSIS**

**MARCH 24, 2017**

February 22, 2017

# State of the COU

A friendly analysis

## Contents

**Transmittal Letter**

**Tables: Neighborhoods Compared to Wards; Recorded Police Contacts**

**Graphs: Central – North – East Comparison**

**Graphs: City – Ward 1 – Central Comparison**

**Graphs: City – Ward 2 – North Comparison**

**Graphs: City – Ward 3 – East Comparison**

**Table: COU Contributions to City's 2016 – 2019 Strategic Plan**



# CITY OF COLUMBIA, MISSOURI

COMMUNITY RELATIONS DEPARTMENT – 701 E. BROADWAY – COLUMBIA, MO 65201

February 24, 2017

MEMORANDUM FOR CITY MANAGER MIKE MATTHES

FROM: Toni Messina, Civic Relations Officer

SUBJECT: State of the COU

In the interest of reviewing the Community Outreach Unit's work and supporting its future planning and decision-making, I offer this friendly "State of the COU" analysis.

## Non-Scientific Method, Assumptions and Limitations

- This is primarily a personal, informal quantitative analysis based on selected citizen survey results from 2015 and 2016. The selected results are associated with public safety issues.
- Our sampling design was different in 2015 and 2016. Thus, 2015 data for the strategic Central, North and East neighborhoods is available only for "lag measures" identified in the City's 2016 – 2019 Strategic Plan.
- The analysis compares city-wide responses to those in each neighborhood and its respective City Ward. The Wards can be considered the control group. The strategic neighborhoods can be considered the variables. The COU and other City agencies intentionally did things differently in the neighborhoods, so that's where variation can be expected.
- Because COU and CPD quantitative and anecdotal data generally are not accessible to me, I cannot draw valid conclusions about the full impact of the Unit's work in the neighborhoods.

## Observations from the Data

1. While starting from a different baseline than the city as a whole, the neighborhoods made impressive gains in lag measures relating to public safety and ability to thrive in Columbia.

### Increase satisfaction with the overall feeling of safety by 6% by 2019

Central increased by 14%  
from 36% to 50% satisfied

North increased by 9%  
from 44% to 53% satisfied

East increased by 4%  
from 32% to 36% satisfied

Increase satisfaction with overall quality of Police services by 6% by 2019

Central decreased by 6%  
from 50% to 44% satisfied

North increased by 6%  
from 56% to 62% satisfied

East increased by 22%  
from 32% to 54% satisfied

Increase agreement that one can thrive in Columbia from 74% to 79% by Dec. 31, 2018

Central increased by 32%  
from 40% to 72% agreement

North decreased by 15%  
from 81% to 66% agreement

East increased by 14%  
from 48% to 61%

2. Even though we don't have comparable 2015 and 2016 data for all responses, in many cases neighborhoods are more satisfied and feel less at risk of victimization than their respective Wards.

- East better than Ward 3 in seven responses, including Police service quality lag measure
- North better than Ward 2 in six responses, including Police service quality lag measure
- Central better than Ward 1 in only one response

3. There is no consistent relationship that I can see between the number of positive COU officer contacts with neighborhood residents and resident views expressed through the citizen survey.

### **Status**

In my opinion, the state of the COU is excellent and hopeful. There is ample evidence of better conditions in each strategic neighborhood, especially in areas relating to safety and especially in the North and East neighborhoods. Despite lower ratings relating to safety in the Central neighborhood, its residents report a spectacular boost in their ability to thrive. COU Officers and leaders also contribute to achieving all strategic priorities, possibly shouldering responsibilities that outpace all other City departments and divisions.

COU and CPD data may reveal other factors that affect results, such as specific Officers' ability to earn trust; changes in service calls; cooperative relationships and partnerships that enhance Police work; coaching and mentoring; and acts of kindness. On the "down" side, COU might look at counter-messages circulating in neighborhoods; histories of negative relationships; the effects of inadequate resource deployment; and at external pressures.

### **The Future**

With the receipt of a federal grant for four new COU Officers, the Unit is challenged to (quickly?) merge two different functions in a way that preserves the promise of community policing and outreach. With the City Council's Feb. 20 adoption of a resolution authorizing a year-long study of community policing preferences, COU is challenged to (patiently?) run the unit while local stakeholders define its work.

Mike Matthes

Feb. 24, 2017

Pg. 3

COU must prepare to manage the practical while surviving the political. At least, that's how it seems to me.

As always, I'm happy to discuss this with you and others at any time.

**Neighborhoods Compared to Wards and  
Neighborhood Change between 2015 and 2016 (where available)**

Shaded area indicates not  
sampled in 2015

Survey Question		Neighborhood Better than Ward			Neighborhood Better in 2015 than 2016		
		C	N	E	C	N	E
1.1	Satisfaction w/ City public safety services (Police and Fire)						
3.4	LAG MEASURE: Satisfaction w/ overall feeling of safety in the city				X	X	X
4.1	Feeling of safety walking in neighborhood during day			X			
4.2	Feeling of safety walking in neighborhood at night						
5.1	Likelihood of hearing gunshots						
5.2	Likelihood of being a property crime victim			X			
5.3	Likelihood of being a violent crime victim			X			
30.1	Have used Police services			X			
30.2	Have been a crime victim						
6.1	Satisfaction w/ Police efforts to prevent crime		X				
6.2	Satisfaction w/ how quickly Police respond to emergencies		X	X			
6.3	LAG MEASURE: Satisfaction w/ overall quality of Police services		X	X		X	X
12.1	Satisfaction w/ residential property maintenance		X				
12.2	Satisfaction w/ residential code enforcement	X	X				
12.6	Satisfaction w/ trash and litter clean-up		X	X			
15.2	LAG MEASURE: Agreement that Columbia is a place where I can thrive				X		X

**Recorded Police Contacts in Neighborhoods  
(all data collected since 4/1/16 – reports checked on 2/9/2017)**

Recorded Interactions	Central	North	East
Total interactions	3,048	1,346	1,784
Total positive	2,787	1,261	1,668
Percent positive	91%	94%	93%
Main concentration	Douglass Park – Providence and Ash – fairly balanced across neighborhood	Along Derby Ridge from Smiley to Brown School Rd and Bodie-Currituck	Along and slightly north and south of Orchard from McKee to east of Osage – Indian Hills Neighborhood

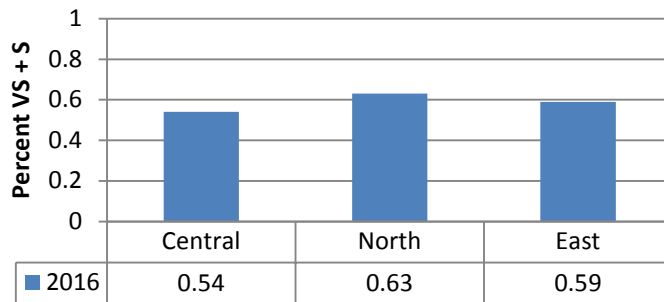
## CENTRAL – NORTH - EAST COMPARED

### Selected Public Safety Indicators 2015 – 2016 Comparison, Where Possible

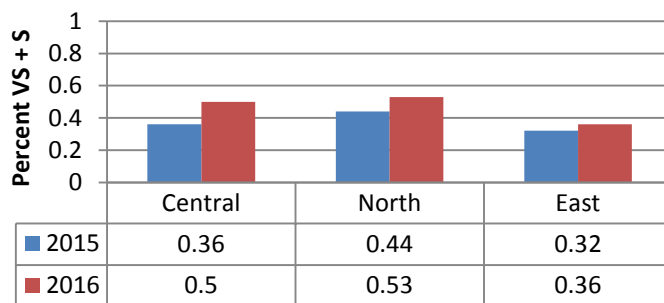
One of 12 major City services rated. Subsequent question asks respondents to list top four most important services, and public safety usually is most important city-wide.

In 2016, all neighborhoods less satisfied than their Wards.

#### 1.1 Satisfaction w/ City Public Safety Services (Police and Fire)



#### 3.4 Satisfaction w/ Overall Feeling of Safety in the City

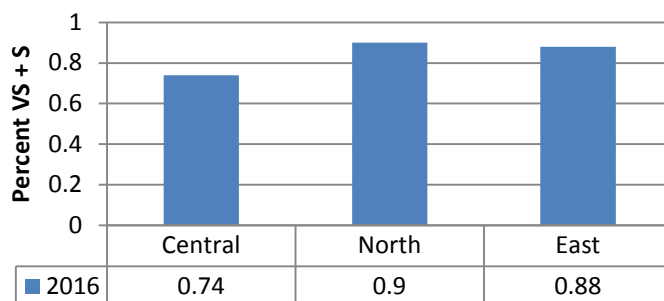


One of six perceptions or feelings about living in the City. Strategic lag measure for public safety: Increase overall feeling of safety by 6% by 2019.

In 2016, all neighborhoods feel safer than last year. Central satisfaction same as Ward 1. North and East both less satisfied than their Wards.

NORTH AND CENTRAL SATISFACTION INCREASED BY MORE THAN 6% FROM 2015.

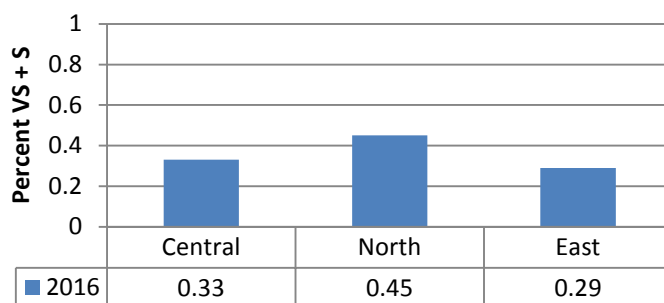
#### 4.1 Feeling of Safety Walking in Neighborhood during the Day



One of five perceptions or feelings about safety. Others relate to downtown and parks.

In 2016, Central and North less satisfied than their Wards. East slightly more satisfied than Ward 3.

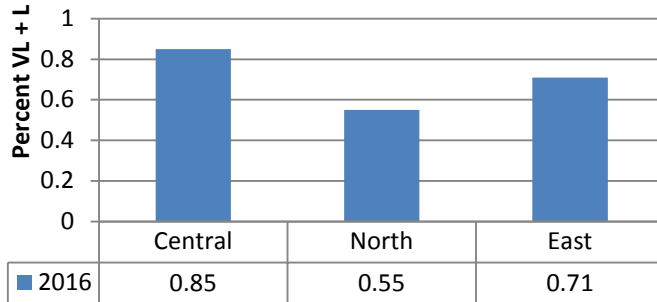
#### 4.2 Feeling of Safety Walking in Neighborhood at Night



One of five perceptions or feelings about safety. Others relate to downtown and parks.

In 2016, all neighborhoods feel less safe than their Wards.

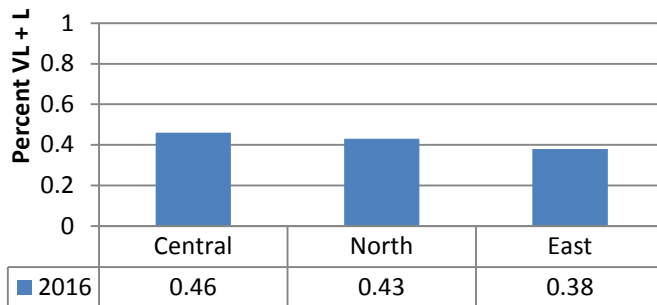
### 5.1 Likelihood of Hearing Gunshots



One of four public safety concerns rated. One other relates to likelihood of being a fire victim.

In 2016, all neighborhoods feel more at risk than their Wards.

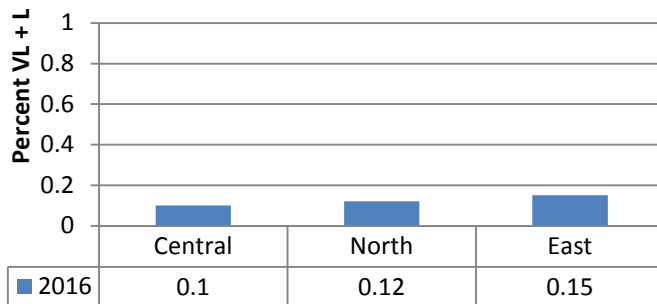
### 5.2 Likelihood of Being a Property Crime Victim



One of four public safety concerns rated. One other relates to likelihood of being a fire victim.

In 2016, Central and North feel more at risk than their Wards. East feels less at risk than Ward 3.

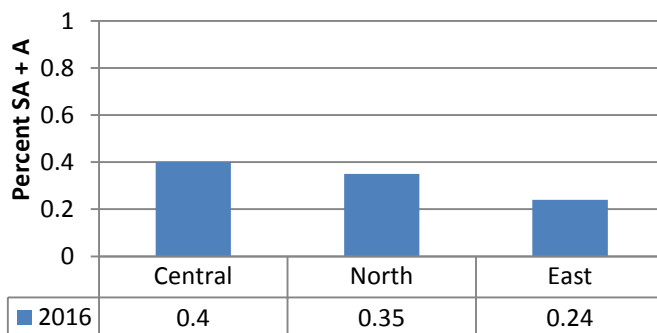
### 5.3 Likelihood of Being a Violent Crime Victim



One of four public safety concerns rated. One other relates to likelihood of being a fire victim.

In 2016, Central feels same risk as Ward 1, North feels more risk than Ward 2 and East feels less risk than Ward 3.

### 30.1 Have Used Police Services

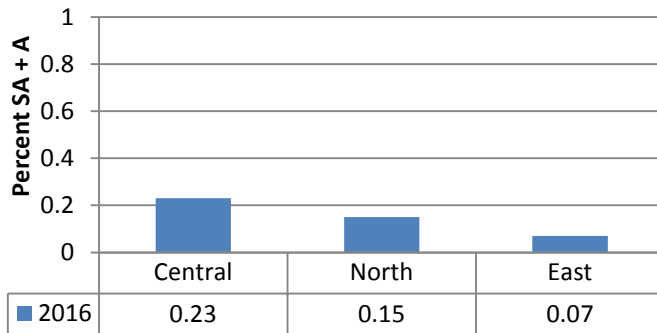


One of 10 City services rated.

In 2016, Central and North report 2% higher use of Police services than their Wards. East reports 5% less use than Ward 3.



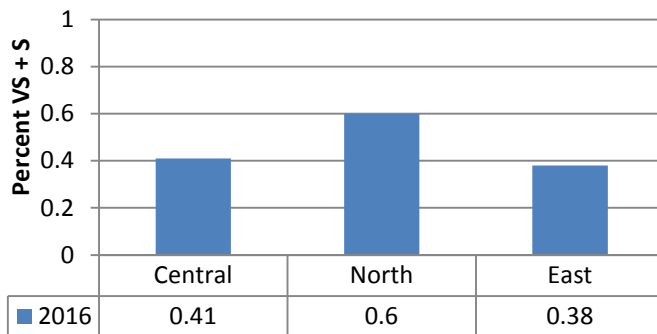
### 30.2 Have Been a Victim of Crime



One of 10 City services rated.

In 2016, Central and North neighborhoods report higher percentage of crime victimization than their Wards. East reports same percentage as Ward 3.

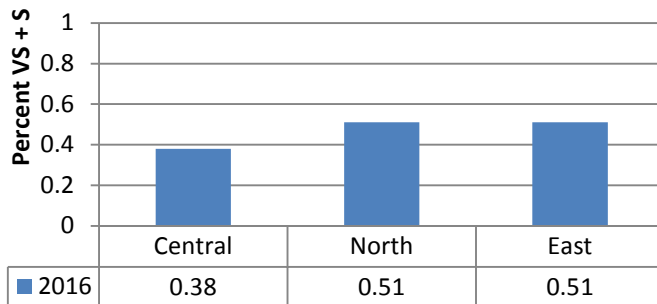
### 6.1 Satisfaction w/ Police Efforts to Prevent Crime



One of six public safety services rated. Others relate to fire and municipal court.

In 2016, Central and East are less satisfied with crime prevention than their Wards. North is more satisfied than Ward 2.

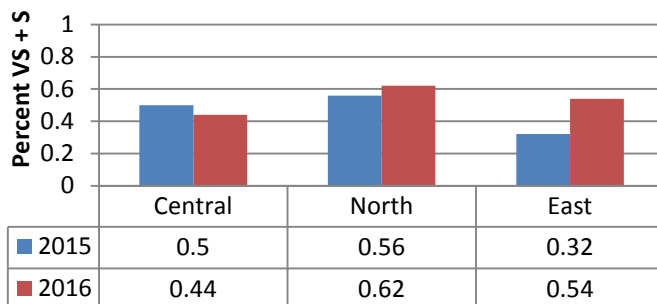
### 6.2 Satisfaction w/ How Quickly Police Respond to Emergencies



One of six public safety services rated. Others relate to fire and municipal court.

Central is less satisfied than Ward 1 with response time. North and East are more satisfied than their Wards.

### 6.3 Satisfaction w/ Overall Quality of Police Services

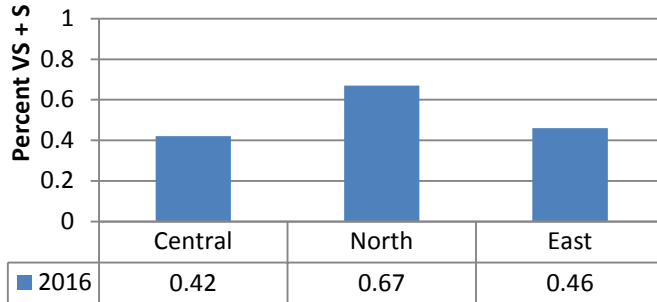


One of six public safety services rated. Others relate to fire and municipal court. Strategic lag measure for public safety: Increase overall satisfaction with police services by 6% by 2019.

In 2016, Central is less satisfied than Ward 1. North and East are more satisfied than their Wards.

**BOTH NORTH AND EAST SATISFACTION INCREASED BY MORE THAN 6% FROM 2015.**

### 12.1 Satisfaction w/ Residential Property Maintenance

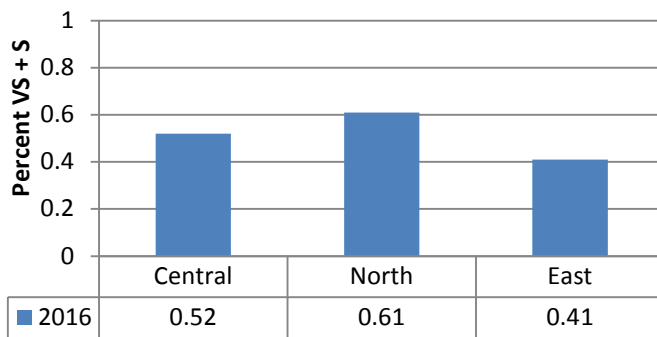


One of six code enforcement services rated. Others relate to business property and trash/litter.

Included because complaints can ultimately involve Police and create conditions friendly to crime.

In 2016, Central and East are less satisfied than their Wards. North is slightly more satisfied than Ward 2.

### 12.2 Satisfaction w/ Residential Code Enforcement

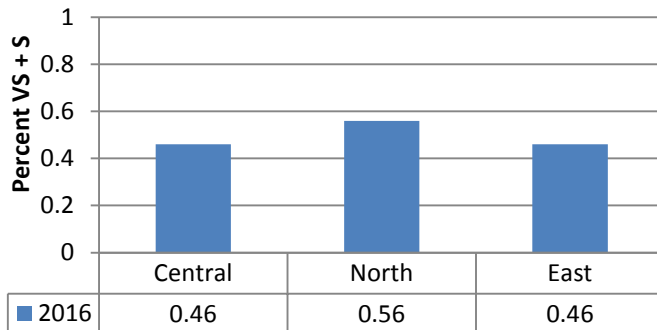


One of six code enforcement services rated. Others relate to business property and trash/litter.

Included because complaints can ultimately involve Police and create conditions friendly to crime.

In 2016, Central and North are more satisfied than their Wards. East is less satisfied than Ward 3.

### 12.6 Satisfaction w/ Trash and Litter Clean-Up

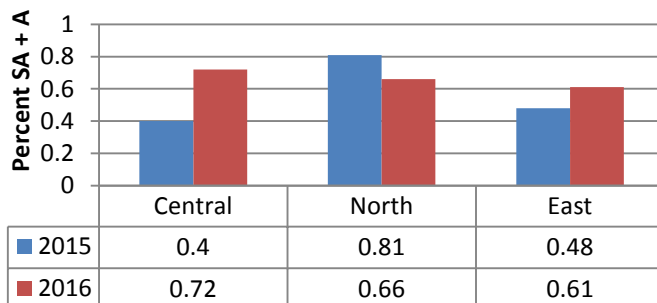


One of six code enforcement services rated. Others relate to business property and trash/litter.

Included because complaints can ultimately involve Police and create conditions friendly to crime.

In 2016, North and East are more satisfied than their Wards. Central is less satisfied than Ward 1.

### 15.2 Agreement that Columbia is a Place Where I can Thrive



One of nine perceptions of personal well-being rated. Others relate to quality of life and economic opportunity.

Strategic lag measure for social equity: Increase overall agreement that one can thrive from 74% to 79% by 12/31/18.

While below the 74% baseline in 2015, agreement increased in 2016 by more than 5% in Central and East. Agreement fell in North. All neighborhoods are below 2016 levels for their Wards.

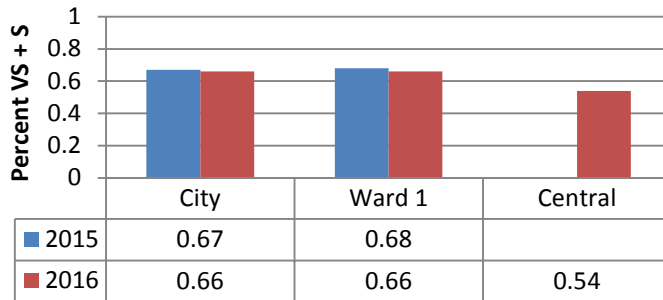
## CENTRAL

### Selected Public Safety Indicators 2015 – 2016 Comparison, Where Possible

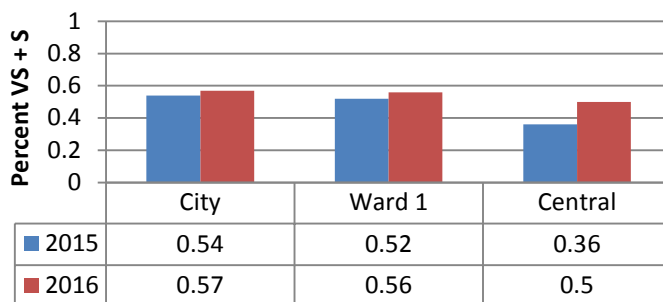
One of 12 major City services rated. Subsequent question asks respondents to list top four most important services, and public safety usually is most important city-wide.

Satisfaction generally stable in city and ward but not increasing over last two years. Central is 12 points lower. No Central sampling in 2015.

#### 1.1 Satisfaction w/ City Public Safety Services (Police and Fire)



#### 3.4 Satisfaction w/ Overall Feeling of Safety in the City

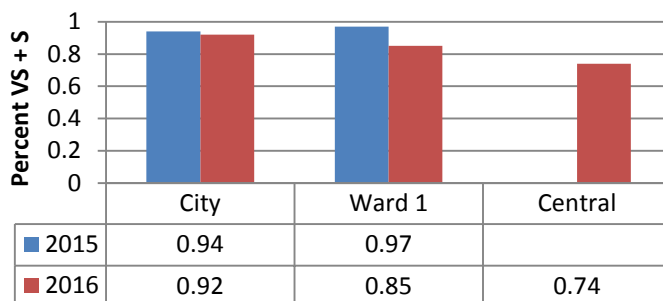


One of six perceptions or feelings about living in the City.

Strategic lag measure for public safety: Increase overall feeling of safety by 6% by 2019.

Up by 3% for city, by 4% in Ward and 14% in North.

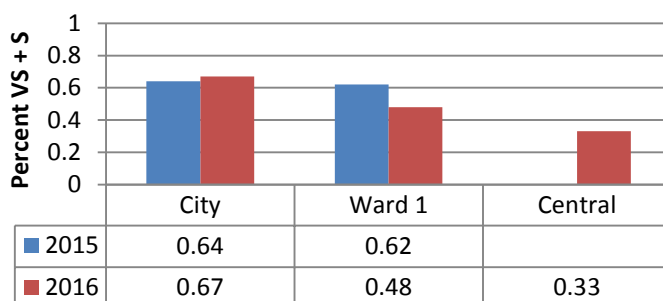
#### 4.1 Feeling of Safety Walking in Neighborhood during the Day



One of five perceptions or feelings about safety. Others relate to downtown and parks.

Down slightly for city, more for and Ward with Central feeling least safe. No Central sampling in 2015.

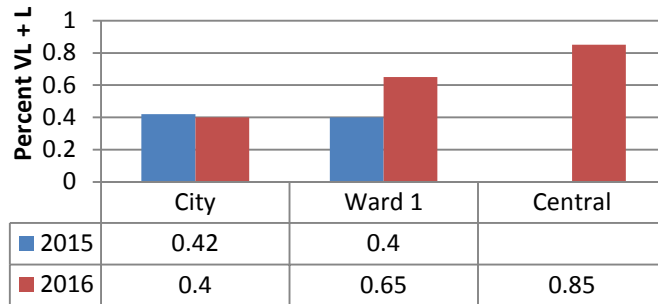
#### 4.2 Feeling of Safety Walking in Neighborhood at Night



One of five perceptions or feelings about safety. Others relate to downtown and parks.

Up slightly for city, down 14 points in Ward with Central feeling least safe. No Central sampling in 2015.

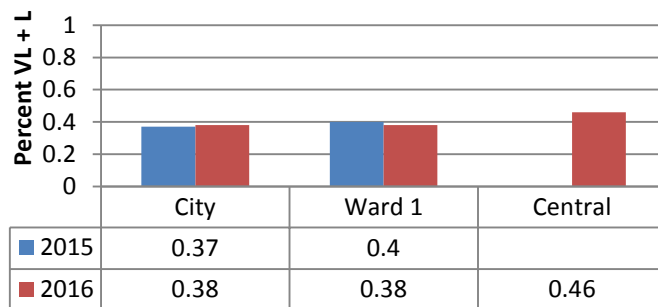
### 5.1 Likelihood of Hearing Gunshots



One of four public safety concerns rated. One other relates to likelihood of being a fire victim.

Central has a vastly different view than city and Ward. City down slightly, and Ward up by 25 points. Would be helpful to compare this response to locations of shots fired calls. No Central sampling in 2015.

### 5.2 Likelihood of Being a Property Crime Victim



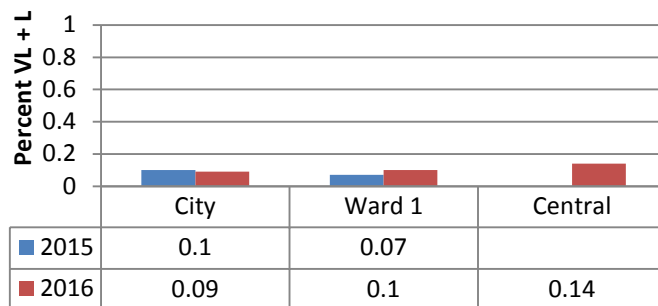
One of four public safety concerns rated. One other relates to likelihood of being a fire victim.

Feeling of risk rising slightly in city and Ward, with higher risk in Central. No Central sampling in 2015.

1/16/17 – 2/12/17 = 10 total property crimes  
1/18/16 – 2/14/16 = 8 total property crimes

Suggest supplementing this data as appropriate.

### 5.3 Likelihood of Being a Violent Crime Victim



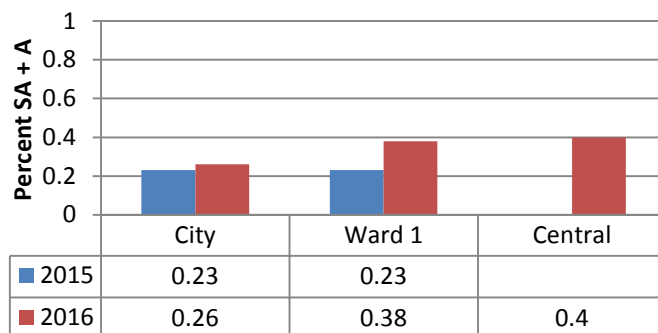
One of four public safety concerns rated. One other relates to likelihood of being a fire victim.

City and Ward feel similar risk. Slightly higher for Central. No Central sampling in 2015.

1/16/17 – 2/12/17 = 4 total violent crimes  
1/18/16 – 2/14/16 = 16 violent crimes

Suggest supplementing this data as appropriate.

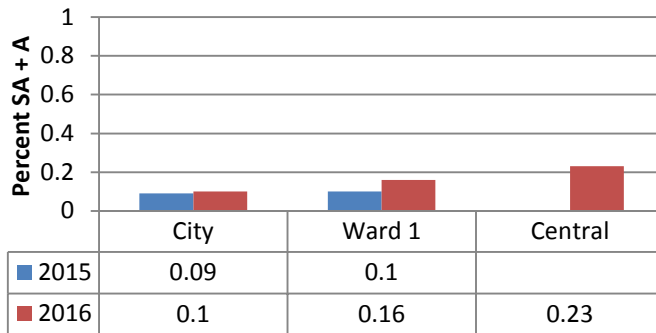
### 30.1 Have Used Police Services



One of 10 City services rated.

Reports of use of Police services rose slightly for city and 11 points for Ward. Central comparable to Ward. No Central sampling in 2015.

### 30.2 Have Been a Victim of Crime

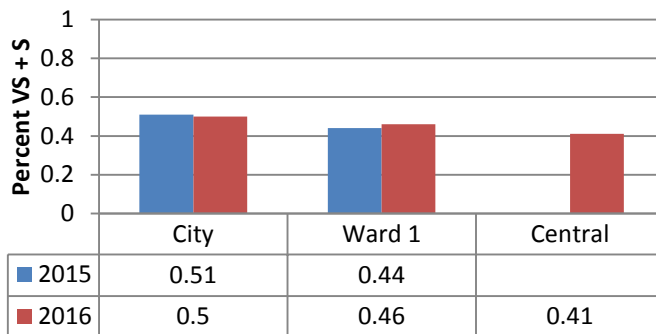


One of 10 City services rated.

City reports less victimization than Ward and Central. No Central sampling in 2015.

There is some evidence that feeling likely to experience property or violent crime far exceeds actual victimization, but it's not conclusive because we did not separate property from violent crime victimization.

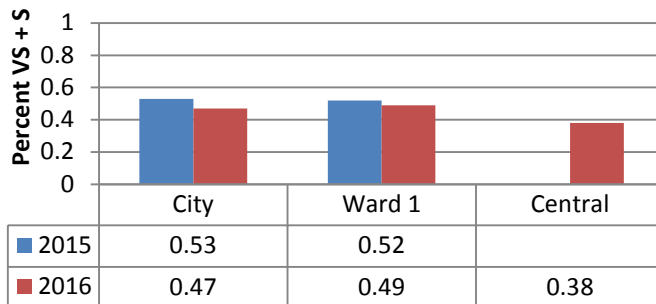
### 6.1 Satisfaction w/ Police Efforts to Prevent Crime



One of six public safety services rated. Others relate to fire and municipal court.

City and Ward generally stable. Central less satisfied but not that far off Ward. No Central sampling in 2015.

### 6.2 Satisfaction w/ How Quickly Police Respond to Emergencies

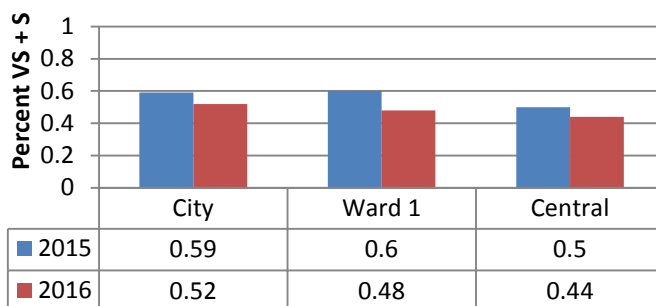


One of six public safety services rated. Others relate to fire and municipal court.

City down more than Ward. Central is least. No Central sampling in 2015.

Suggest supplementing with other data.

### 6.3 Satisfaction w/ Overall Quality of Police Services

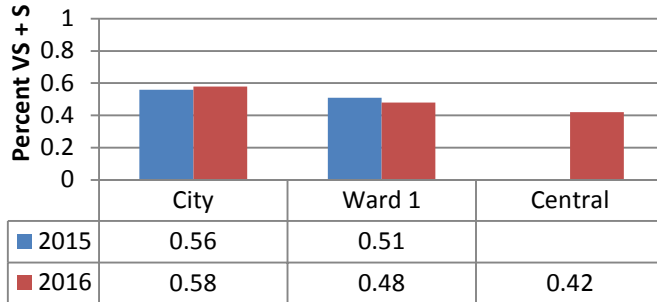


One of six public safety services rated. Others relate to fire and municipal court.

Strategic lag measure for public safety: Increase overall satisfaction with police services by 6% by 2019.

Down 6 points for Central, 7 for City and 12 points for Ward.

### 12.1 Satisfaction w/ Residential Property Maintenance

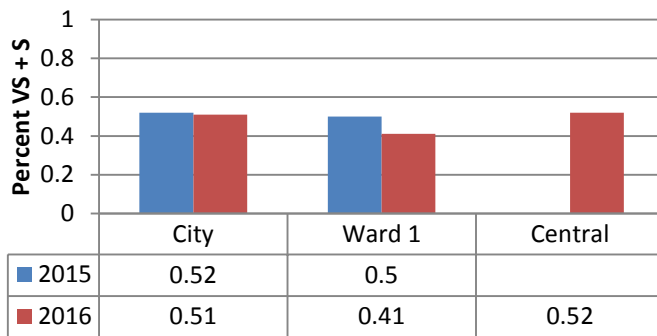


One of six code enforcement services rated. Others relate to business property and trash/litter.

Included because complaints can ultimately involve Police and create conditions friendly to crime.

Satisfaction up a bit for city, down in Ward and lowest in Central. No Central sampling in 2015.

### 12.2 Satisfaction w/ Residential Code Enforcement

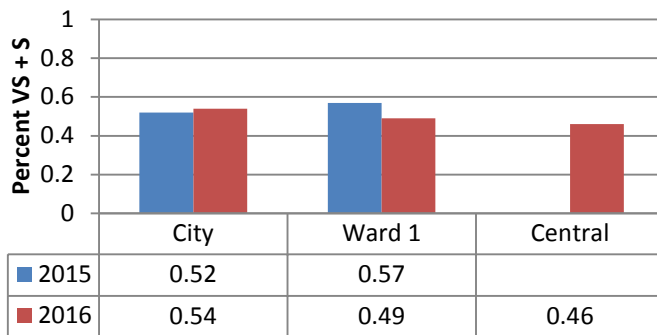


One of six code enforcement services rated. Others relate to business property and trash/litter.

Included because complaints can ultimately involve Police and create conditions friendly to crime.

Satisfaction comparable between city and Central. Down nine points in Ward. No Central sampling in 2015.

### 12.6 Satisfaction w/ Trash and Litter Clean-Up

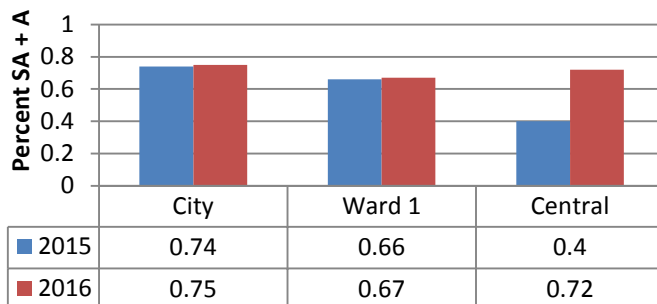


One of six code enforcement services rated. Others relate to business property and trash/litter.

Included because complaints can ultimately involve Police and create conditions friendly to crime.

Satisfaction gap is widening between city and Ward, where levels are comparable to Central. No Central sampling in 2015.

### 15.2 Agreement that Columbia is a Place Where I can Thrive

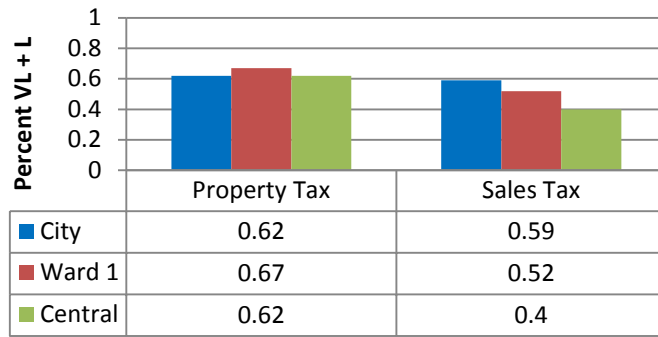


One of nine perceptions of personal well-being rated. Others relate to quality of life and economic opportunity.

Strategic lag measure for social equity: Increase overall agreement that one can thrive from 74% to 79% by 12/31/18.

Stable in city and Ward. Up more than 30 points in Central. Needs research into contributing factors.

**31 & 32 Likely to Support Tax for More Police**



Central equals city in support for property tax increase and lags behind city and Ward for sales tax.

This may be the most dramatic proof that COU is making a difference in the neighborhood. *Might* be driven by: 1) increased satisfaction about overall Police service quality and feeling of safety; and 2) increased likelihood of hearing shots and being victimized.



## Central Neighborhood – World Café March 14, 2017

### How did we get here?

At a June 23, 2016 session at St. Luke United Methodist Church, residents learned about the City's strategic plan but had only a limited time to express their concerns. Resident views were fully explored at a July 26 follow-up meeting at Family Impact Center. These comments were confirmed during residents' conversations with Glenn Cobbins and Judy Hubbard.



### Top concerns

- Affordable housing, housing resources and public housing
- Public safety
- Job resources and training
- City services, public transit, green space, street safety

### Good things going on

The City Manager and Columbia Housing Authority staff met last August. Topics included trespass appeal process; animal slaughter; waste disposal; bed bugs; resident associations; video surveillance; and resident services.



The Central neighborhood is blessed in many ways.

- Many churches and service agencies
- Strong connections between neighbors and generations
- Worley Street Roundtable focus on education
- Strong identification with Douglass Park
- Good location and population density
- Effective Community Outreach Officers



### What's next?

Tonight, residents will be asked to discuss their priorities in a "World Café" process. You'll be able to talk in small groups about special questions. All comments will be shared at the end of the meeting. Future sessions are scheduled at Hickman High on Thursday, April 6 and Tuesday, April 25.

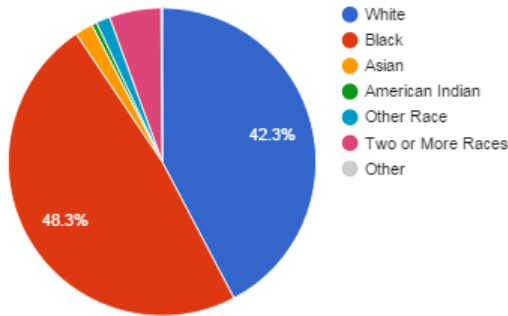




## Central Neighborhood Population

The City identified the North Neighborhood based on US Census data; maps of City service calls; and observations made by City employees as they work in the field.

2010 Population by Race



### Population (US Census)

1990	2,503
2000	2,356
2010	2,235

### Income (US Census)

Est. 2010 - 2014 household median income \$30,060 (half the population is above, and half below)

### Housing (US Census)

2010 housing units 1,647

2010 percent housing units vacant 11.5%

2010 percent of housing units rented 64.4%

Active rental certificates 484

2014 energy site use intensity – Medium and relatively high

Code enforcement cases since 2000 7,762

CDBG investment 2010-2014 \$1,257,963.02

## Promoting Safe and Secure Neighborhoods

Police Officers Justin Anthony and Andria Heese are assigned to the neighborhood through the Police Department's Community Outreach Unit. Police have a substation at 200 Boone Drive.

## Neighborhood Care

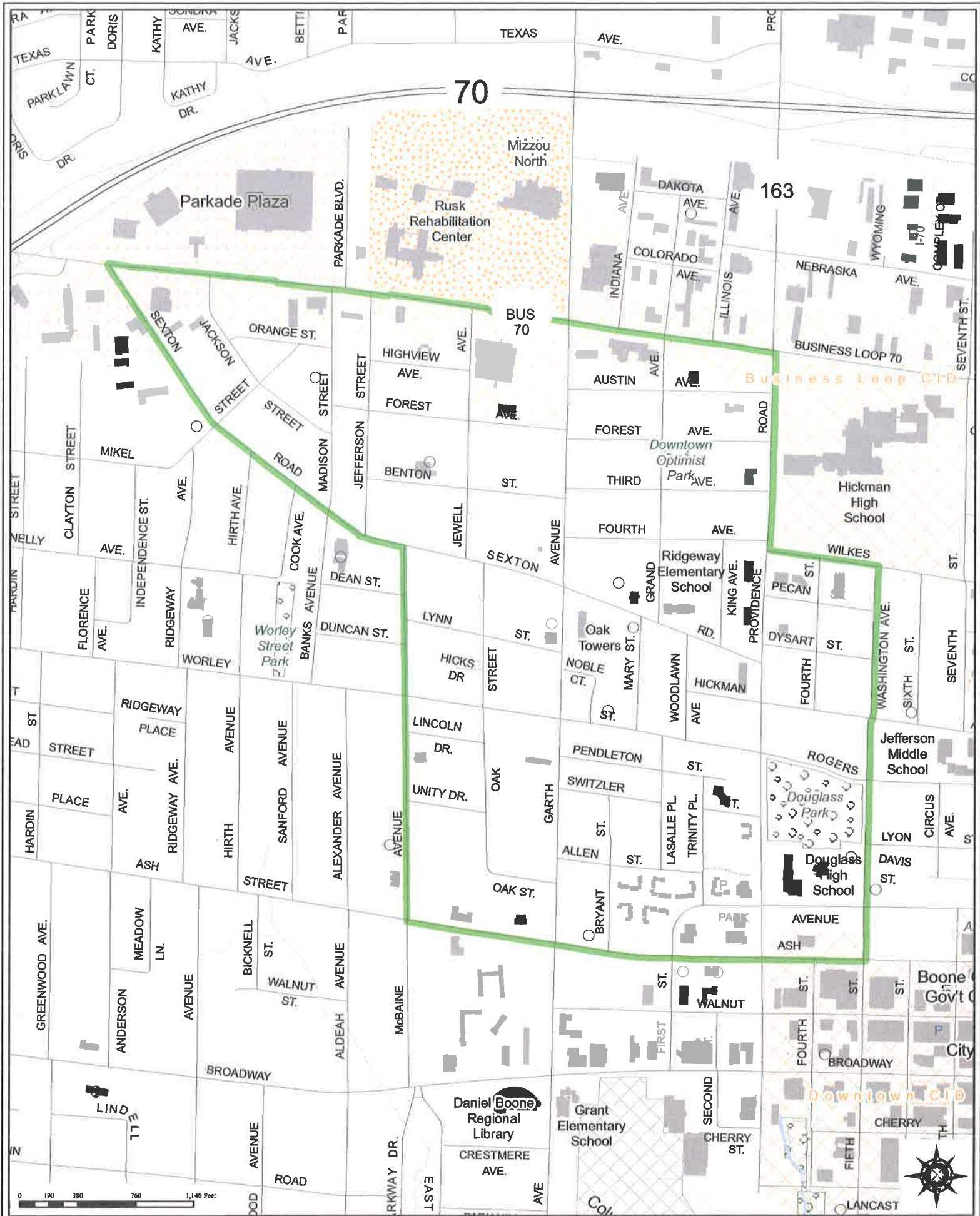
Caring for Columbia clean-up and Clean Streets day on Garth; We Are Family march; National Night Out events; demolition of substandard homes.

## Active Living, Healthy Eating, Cultural Events

Probably the richest offerings in the community are centered around Douglass Park. Some have long traditions, but they're now enhanced by more participation, more City and other service provider contacts and coordination. Activities include summer lunches; baseball league; Moonlight Hoops; Lawn Chair Concerts; DJ in the Park; "Rock the Community" (1,000+ participants); and citizen input on park improvements (now under way); Race and Equity Forum at Hickman High.

## Affordable Housing

There's a lot of activity at Garth and Lynn where new affordable housing is being built. The project had heavy input from residents, the neighborhood association and City and other agency staff members. Work also includes a new bus shelter; renovations to Centro Latino; new home construction; sidewalks; stormwater drainage; and Land Trust property.



**Neighborhood Service Area**

- North
- East
- Central

**Legend:**

- Private Road, Not Named
- Private Road, Named
- Trails
- City Parks
- Campus
- Cemetery
- Commercial
- Government
- Houses of Worship
- Community Improvement Districts (CIDs)
- Industrial
- Other Government
- City of Columbia
- Boone County
- Structures (at least 5,000 sqft footprint or 50ft above ground)

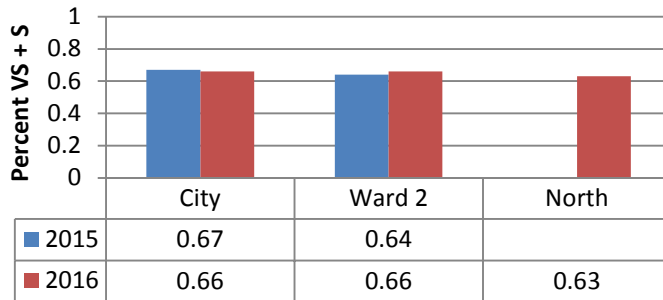
## NORTH

### Selected Public Safety Indicators 2015 – 2016 Comparison, Where Possible

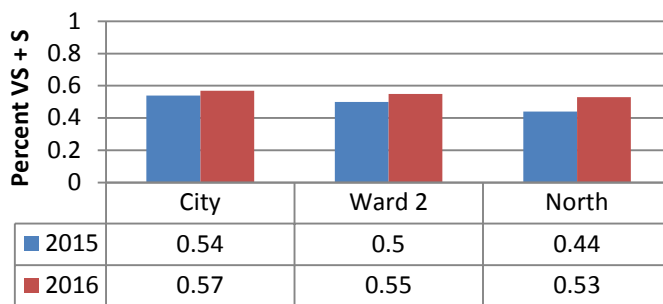
One of 12 major City services rated. Subsequent question asks respondents to list top four most important services, and public safety usually is most important city-wide.

Satisfaction generally stable over last two years, but a little up in Ward. No North sampling in 2015.

#### 1.1 Satisfaction w/ City Public Safety Services (Police and Fire)



#### 3.4 Satisfaction w/ Overall Feeling of Safety in the City

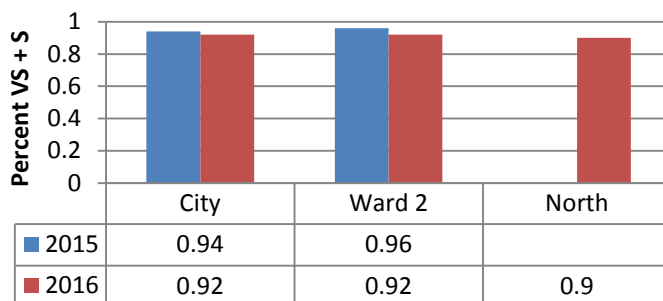


One of six perceptions or feelings about living in the City.

Strategic lag measure for public safety: Increase overall feeling of safety by 6% by 2019.

Up by 3% for city, by 5% in Ward and 9% in North.

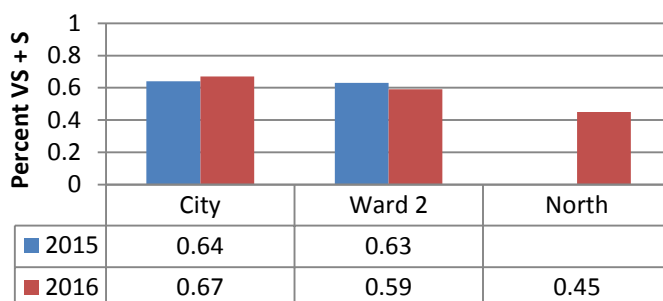
#### 4.1 Feeling of Safety Walking in Neighborhood during the Day



One of five perceptions or feelings about safety. Others relate to downtown and parks.

Down slightly for city and Ward, but all comparable in 2016. No North sampling in 2015.

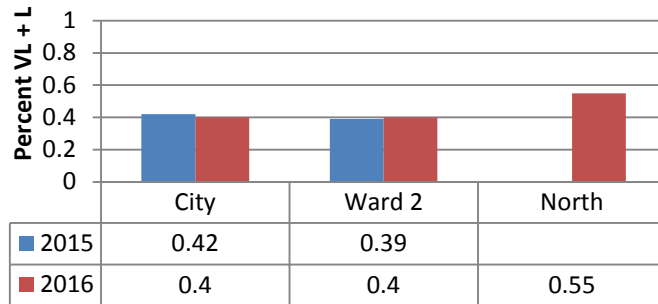
#### 4.2 Feeling of Safety Walking in Neighborhood at Night



One of five perceptions or feelings about safety. Others relate to downtown and parks.

Up for city and down in Ward. North significantly lower. No North sampling in 2015.

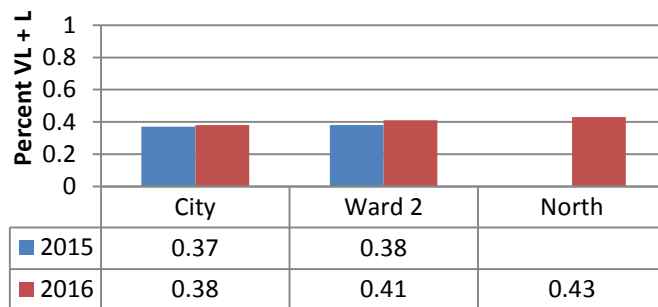
### 5.1 Likelihood of Hearing Gunshots



One of four public safety concerns rated. One other relates to likelihood of being a fire victim.

North has a vastly different view than city and Ward. Would be helpful to compare this response to locations of shots fired calls. No North sampling in 2015.

### 5.2 Likelihood of Being a Property Crime Victim



One of four public safety concerns rated. One other relates to likelihood of being a fire victim.

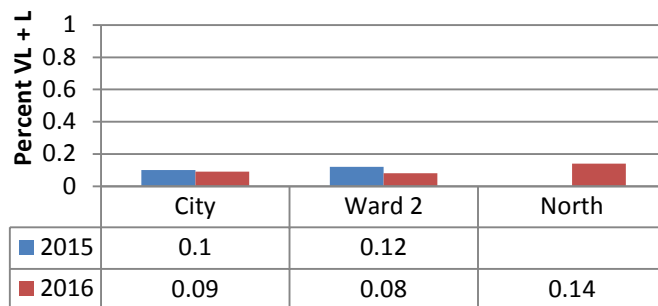
Feeling of risk rising slightly in city and Ward, with slightly higher risk in North. No North sampling in 2015.

1/16/17 – 2/12/17 = 4 total property crimes

1/18/16 – 2/14/16 = 4 total property crimes

Suggest supplementing this data as appropriate.

### 5.3 Likelihood of Being a Violent Crime Victim



One of four public safety concerns rated. One other relates to likelihood of being a fire victim.

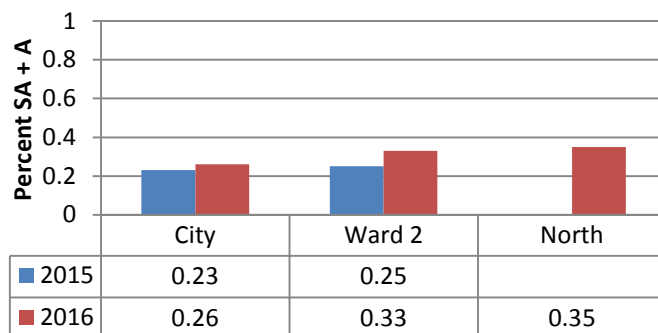
City and Ward feel similar risk. More risk felt in North. No North sampling in 2015.

1/16/17 – 2/12/17 = 2 total violent crimes

1/18/16 – 2/14/16 = 0 violent crimes

Suggest supplementing this data as appropriate.

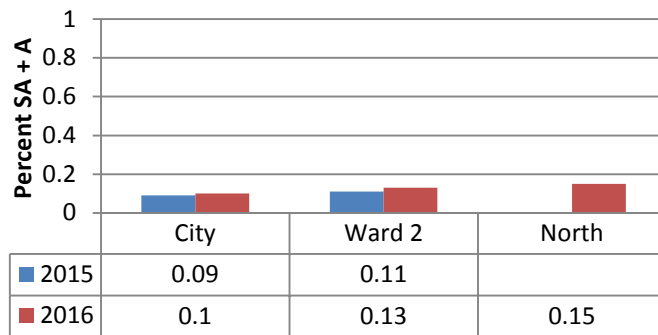
### 30.1 Have Used Police Services



One of 10 City services rated.

Reports of use of Police services rose for city and Ward. North comparable to Ward. No North sampling in 2015.

### 30.2 Have Been a Victim of Crime

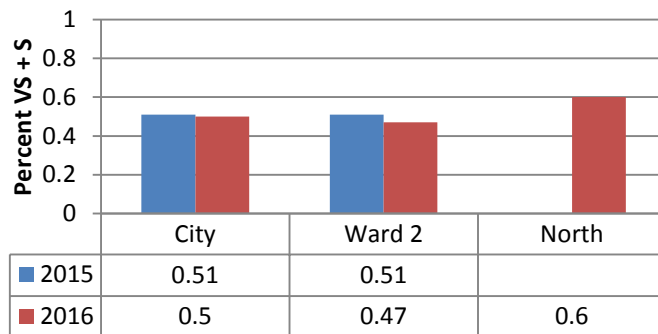


One of 10 City services rated.

City reports less victimization than Ward and North. No North sampling in 2015.

There is some evidence that feeling likely to experience property or violent crime far exceeds actual victimization, but it's not conclusive because we did not separate property from violent crime victimization.

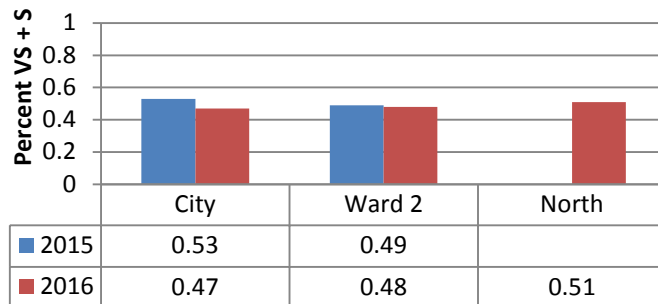
### 6.1 Satisfaction w/ Police Efforts to Prevent Crime



One of six public safety services rated. Others relate to fire and municipal court.

City trends down slightly, Ward more significantly. North is most satisfied, by far. No North sampling in 2015.

### 6.2 Satisfaction w/ How Quickly Police Respond to Emergencies

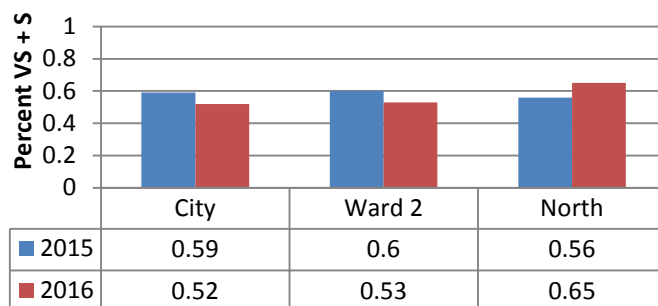


One of six public safety services rated. Others relate to fire and municipal court.

City down more than Ward. North is most satisfied. No North sampling in 2015.

Suggest supplementing with other data.

### 6.3 Satisfaction w/ Overall Quality of Police Services

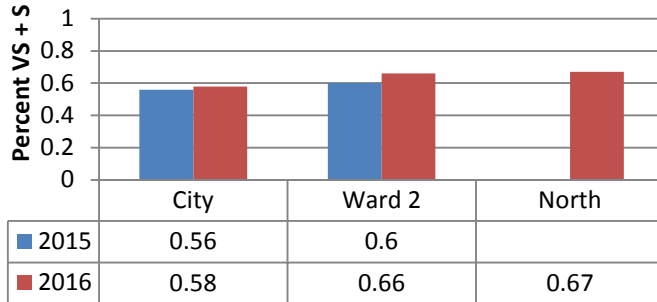


One of six public safety services rated. Others relate to fire and municipal court.

Strategic lag measure for public safety: Increase overall satisfaction with police services by 6% by 2019.

While down significantly for City and Ward, up 9% for North.

### 12.1 Satisfaction w/ Residential Property Maintenance

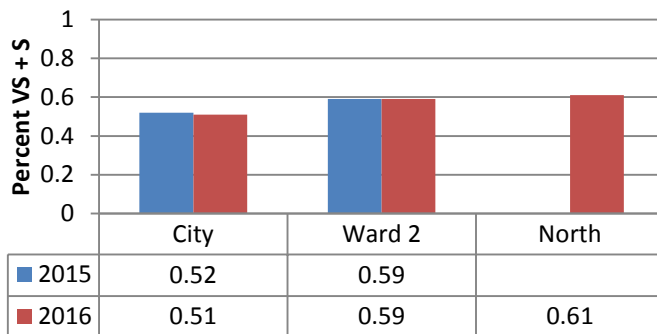


One of six code enforcement services rated. Others relate to business property and trash/litter.

Included because complaints can ultimately involve Police and create conditions friendly to crime.

Satisfaction gap is widening between city and Ward and is highest for North. No North sampling in 2015.

### 12.2 Satisfaction w/ Residential Code Enforcement

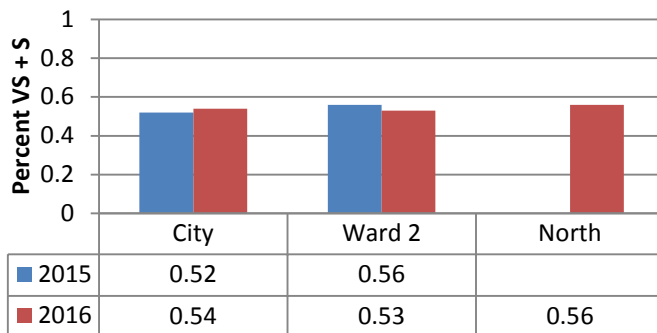


One of six code enforcement services rated. Others relate to business property and trash/litter.

Included because complaints can ultimately involve Police and create conditions friendly to crime.

Satisfaction stable in city and Ward and is highest in North. No North sampling in 2015.

### 12.6 Satisfaction w/ Trash and Litter Clean-Up

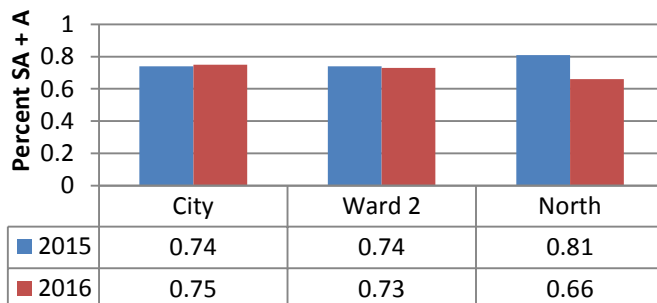


One of six code enforcement services rated. Others relate to business property and trash/litter.

Included because complaints can ultimately involve Police and create conditions friendly to crime.

Satisfaction increasing for city and decreasing in Ward, where satisfaction is lowest. Greatest satisfaction in North, though residents have expressed concerns. No North sampling in 2015.

### 15.2 Agreement that Columbia is a Place Where I can Thrive

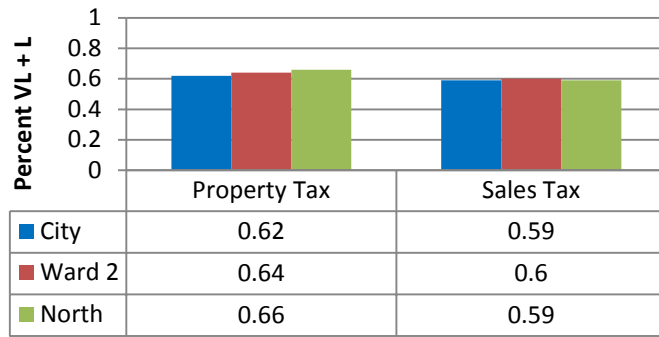


One of nine perceptions of personal well-being rated. Others relate to quality of life and economic opportunity.

Strategic lag measure for social equity: Increase overall agreement that one can thrive from 74% to 79% by 12/31/18.

Stable in city and Ward. Down significantly and unexpectedly in North. Needs research.

**31 & 32 Likely to Support Tax for More Police**

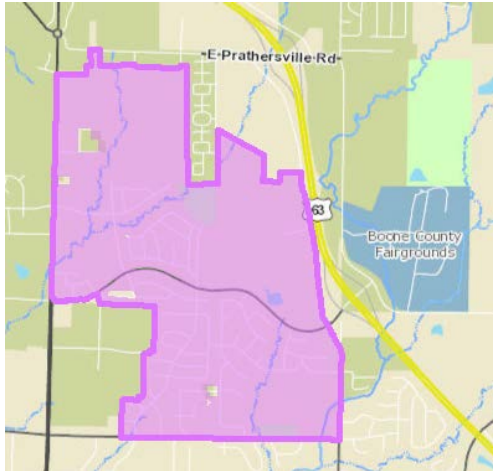


North leads city and Ward in support for property tax increase. Comparable to city and Ward for sales tax.

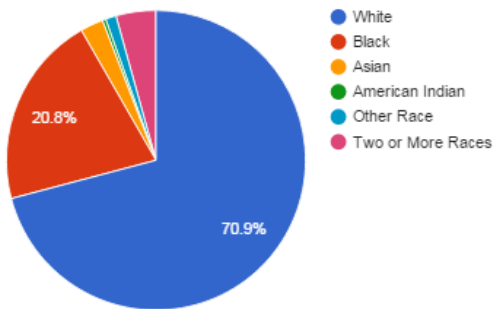
This may be the most dramatic proof that COU is making a difference in the neighborhood. *Might* be driven by: 1) increased satisfaction about overall Police service quality and feeling of safety; and 2) increased likelihood of hearing shots and being victimized.



## North Neighborhood



2010 Population by Race



This area has newer housing stock and a higher concentration of rental properties than both the Central and East neighborhoods. Code violations tend to be focused on nuisances like trash, debris and car violations and not issues with the structures. This area has limited neighborhood association activity, particularly in the areas containing rental property. The Auburn Hills Homeowners Association is active.

### Stress Index ^ #

Neighborhood -0.04872

Columbia average 0

### Population @\*

1990	1,755
2000	3,574
2010	5,451

2010 average persons per household 1.77

Percent of 2010 population of Hispanic ethnicity 3.2%

### Income # %\$

2010 - 2014 household median Income \$47,410

Summer Food Program sites - None

2013 Free/Reduced Lunch participation 72.35%

### Public Safety +

2014 Police calls for service hotspot – Slight

2014 Fire medical calls for service hotspot - No

Satisfaction with public safety services – Satisfied

Satisfaction with overall feeling of safety – Neutral

Feeling of safety walking in neighborhoods at night – Neutral

### Housing \*

2010 housing units 2,039

2010 percent housing units vacant 7.0%

2010 percent of housing units rented 38.5%

Active rental certificates 569

2014 energy site use intensity - High

Code enforcement cases since 2000 1,527

CDBG investment 2010-2014 \$70,531.79

Neighborhood associations – None as of 2014



## Partial List of Features and Observations

### Schools located within the area

Lange Middle

### Other schools where area students may attend

Alpha Hart Lewis Elementary

Derby Ridge Elementary

Battle High

### Parks and recreation facilities

Auburn Hills Park – neighbors created “home-made” access in absence of easy access to park – people feel strongly about cedar trees obscuring playground

Lange Park

Columbia Pride Soccer Complex

### Services in neighborhood or nearby

Moser’s Discount Foods

Commerce Bank

Smiley Lane Family Medicine Clinic

### Churches

Friendship Baptist Church

Grace Evangelical Lutheran Church

### Agencies and service providers

Burrell Behavioral Health supports housing in the area

Missouri National Guard Recruiting

Boone County Jail

### Community Gardens

None ~

### Staff personal observations

- High rental concentration may lend a feeling of isolation from the community
- There may be concerns about crime spilling over from Bodie Drive –numerous shots fired into dwellings
- Some streets in disrepair; streets could be cleaner
- Bodie/Currituck/Edenton – concrete traffic guides in the street may not effectively calm traffic
- Not much green space

## Data Sources

^ City of Columbia unless noted

+ 2015 Columbia City Survey

@ 1990 and 2000 United States Census block level data

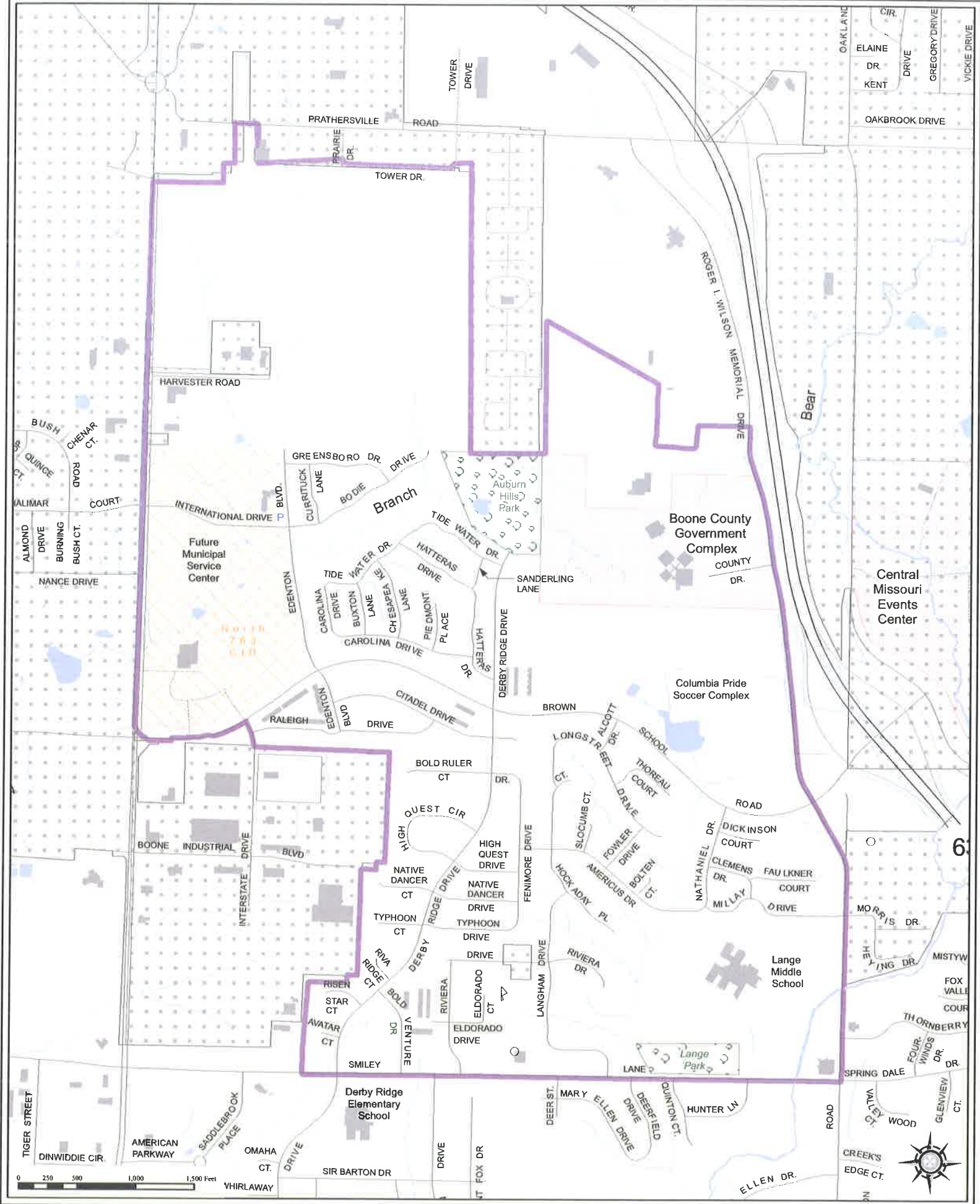
\* 2010 United States Census block level data

# 2013 United States Census 5-Year American Community Survey block group level data

% Columbia Public Schools

~ Community Garden Coalition

\$ We thank Drs. Jonathan R. Bradley, Christopher K. Wikle and Scott H. Holan for their assistance in estimating household median income. The analysis is based on methodology proposed in Bradley, J.R., Wikle, C.K., and Holan, S.H. (2015) Spatio-Temporal Change of Support with Application to American Community Survey Multi-Year Period Estimates, STAT, 4: 255-270



**Neighborhood Service Area**

- North
- East
- Central

Private Road, Not Named

Private Road, Named

Trails

City Parks

Campus

Commercial

Other Government

Government

Houses of Worship

Community Improvement Districts (CIDs)

Structures (at least 5,000 sqft footprint or 50ft above ground)

City of Columbia

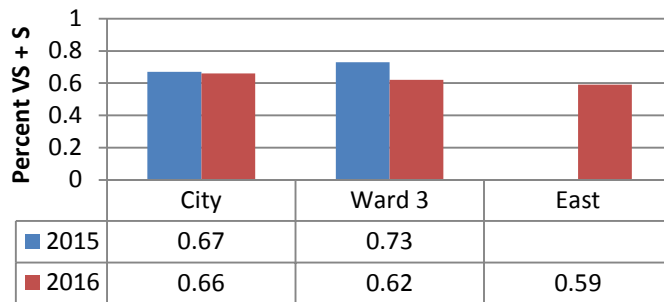
Boone County

## North Strategic Plan Neighborhood

### CITY of COLUMBIA, MISSOURI

February 2016

### 1.1 Satisfaction w/ City Public Safety Services (Police and Fire)

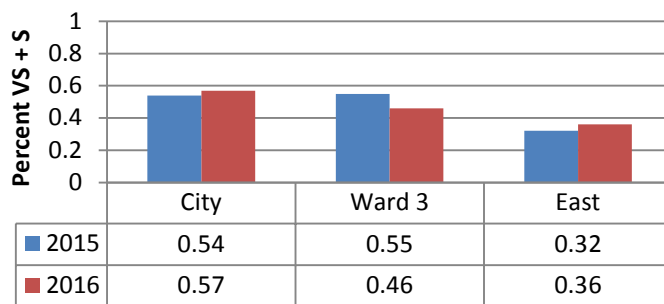


### Selected Public Safety Indicators 2015 – 2016 Comparison, Where Possible

One of 12 major City services rated. Subsequent question asks respondents to list top four most important services, and public safety usually is most important city-wide.

City and Ward downward trend. No East sampling in 2015.

### 3.4 Satisfaction w/ Overall Feeling of Safety in the City

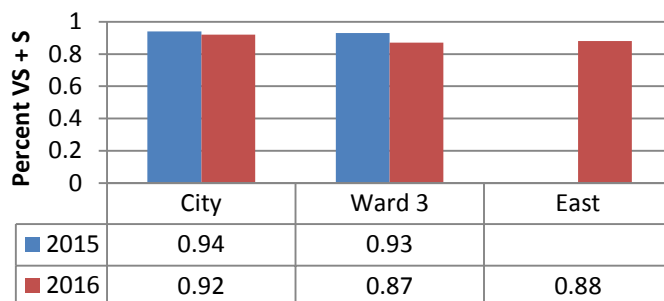


One of six perceptions or feelings about living in the City.

Strategic lag measure for public safety: Increase overall feeling of safety by 6% by 2019.

While down significantly for the Ward, up by 3% for City and 4% for East.

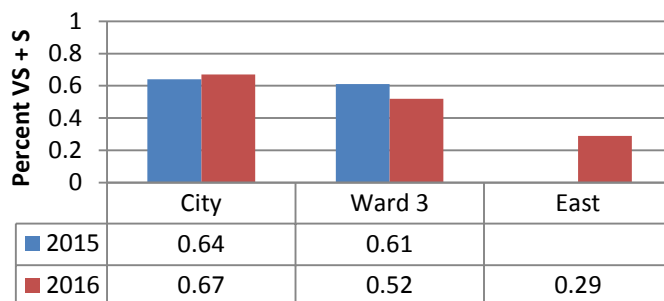
### 4.1 Feeling of Safety Walking in Neighborhood during the Day



One of five perceptions or feelings about safety. Others relate to downtown and parks.

Down slightly for city and by six points for Ward. East and Ward about the same. No East sampling in 2015.

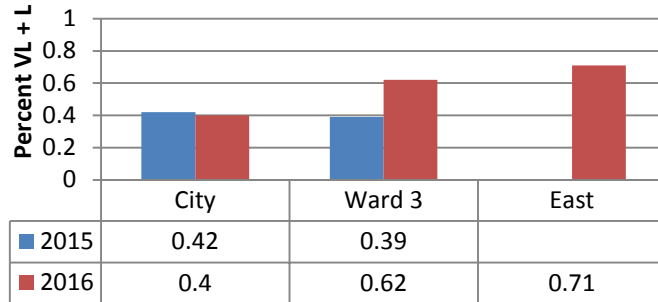
### 4.2 Feeling of Safety Walking in Neighborhood at Night



One of five perceptions or feelings about safety. Others relate to downtown and parks.

Down slightly for city and by nine points for Ward. East significantly lower. No East sampling in 2015.

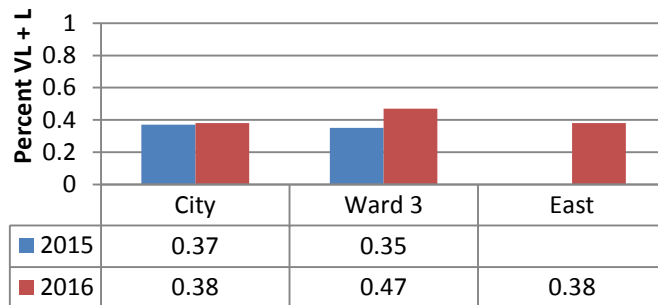
### 5.1 Likelihood of Hearing Gunshots



One of four public safety concerns rated. One other relates to likelihood of being a fire victim.

City down slightly, Ward up more than 20 points. East feels highest risk. Would be helpful to compare this response to locations of shots fired calls. No East sampling in 2015.

### 5.2 Likelihood of Being a Property Crime Victim



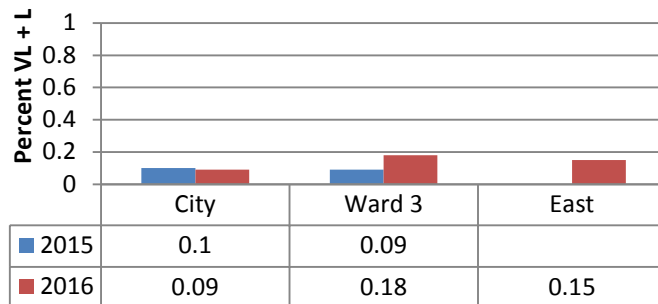
One of four public safety concerns rated. One other relates to likelihood of being a fire victim.

East and City have similar views. Feel less at risk than Ward. No East sampling in 2015.

1/16/17 – 2/12/17 = 7 total property crimes  
1/18/16 – 2/14/16 = 6 total property crimes

Suggest supplementing this data as appropriate.

### 5.3 Likelihood of Being a Violent Crime Victim



One of four public safety concerns rated. One other relates to likelihood of being a fire victim.

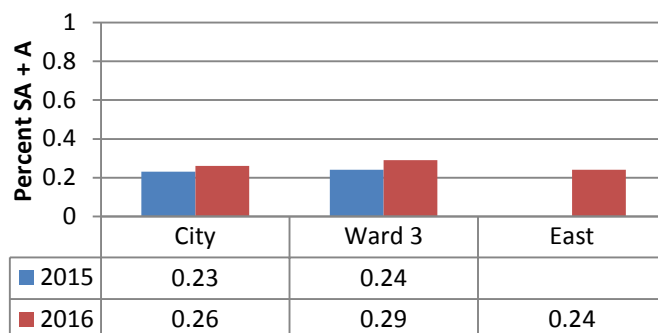
East and Ward have similar views. Feel more at risk than City.

No East sampling in 2015.

1/16/17 – 2/12/17 = 6 total violent crimes  
1/18/16 – 2/14/16 = 2 total violent crimes

Suggest supplementing this data as appropriate.

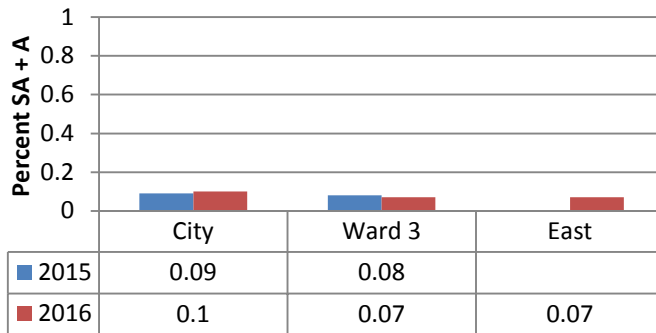
### 30.1 Have Used Police Services



One of 10 City services rated.

East reports slightly less use of Police services than City and Ward. No East sampling in 2015.

### 30.2 Have Been a Victim of Crime

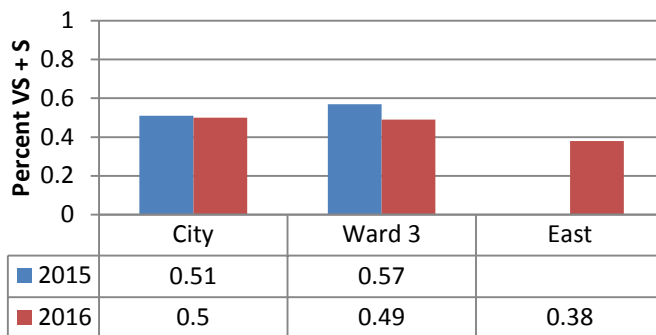


One of 10 City services rated.

East and Ward report slightly less victimization than City. No East sampling in 2015.

There is some evidence that feeling likely to experience property or violent crime far exceeds actual victimization, but it's not conclusive because we did not separate property from violent crime victimization.

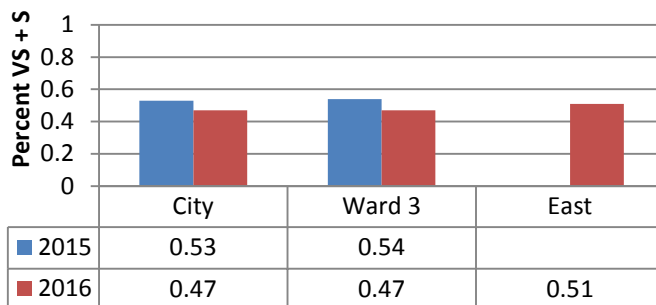
### 6.1 Satisfaction w/ Police Efforts to Prevent Crime



One of six public safety services rated. Others relate to fire and municipal court.

City trends down slightly, Ward more significantly. East is least satisfied. Not inconsistent with likelihood of hearing gunshots or being a crime victim. No East sampling in 2015.

### 6.2 Satisfaction w/ How Quickly Police Respond to Emergencies

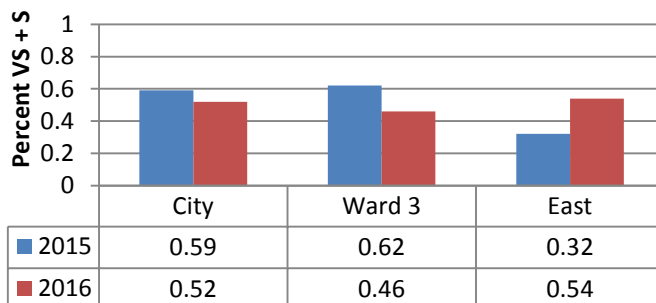


One of six public safety services rated. Others relate to fire and municipal court.

City and Ward trends down significantly. East is most satisfied. No East sampling in 2015.

Suggest supplementing with other data.

### 6.3 Satisfaction w/ Overall Quality of Police Services

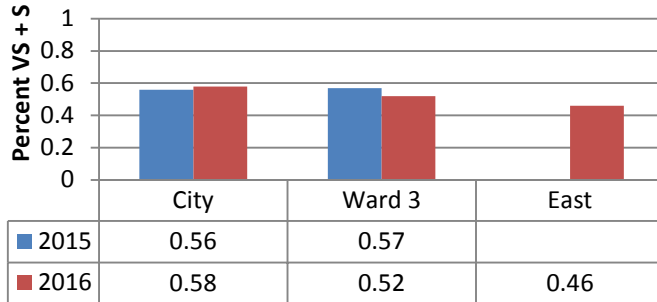


One of six public safety services rated. Others relate to fire and municipal court.

Strategic lag measure for public safety: Increase overall satisfaction with police services by 6% by 2019.

While down significantly for City and Ward, up more than 20 points in East, which is most satisfied.

### 12.1 Satisfaction w/ Residential Property Maintenance

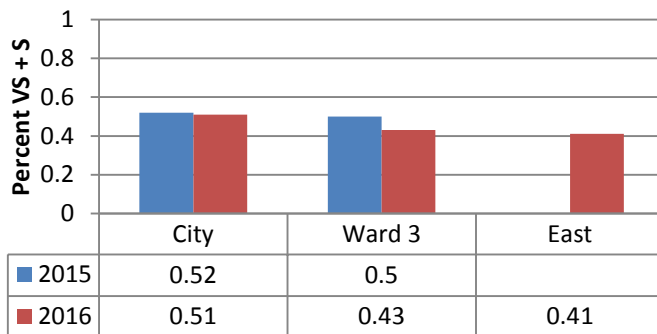


One of six code enforcement services rated. Others relate to business property and trash/litter.

Included because complaints can ultimately involve Police and create conditions friendly to crime.

Satisfaction gap is widening between city and Ward and is lowest in East. No East sampling in 2015.

### 12.2 Satisfaction w/ Residential Code Enforcement

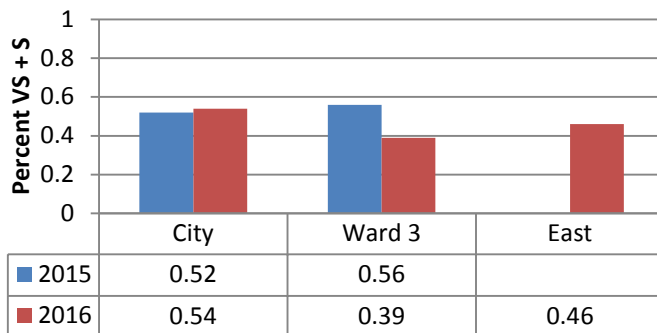


One of six code enforcement services rated. Others relate to business property and trash/litter.

Included because complaints can ultimately involve Police and create conditions friendly to crime.

Satisfaction gap is widening between city and Ward and is lowest in East. No East sampling in 2015.

### 12.6 Satisfaction w/ Trash and Litter Clean-Up

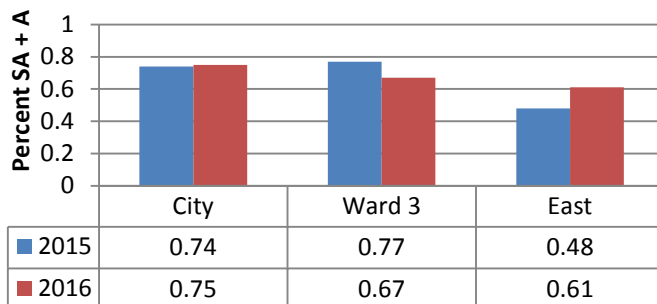


One of six code enforcement services rated. Others relate to business property and trash/litter.

Included because complaints can ultimately involve Police and create conditions friendly to crime.

Satisfaction gap is widening between city and Ward, where satisfaction is lower than East. No East sampling in 2015.

### 15.2 Agreement that Columbia is a Place Where I can Thrive

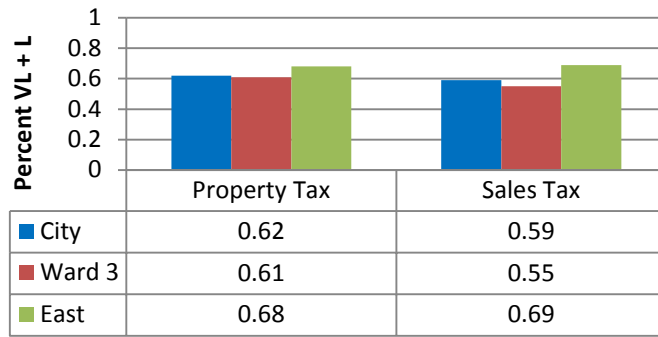


One of nine perceptions of personal well-being rated. Others relate to quality of life and economic opportunity.

Strategic lag measure for social equity: Increase overall agreement that one can thrive from 74% to 79% by 12/31/18.

Up slightly for city and a lot in East, though not near the 74% baseline. Down significantly in Ward.

**31 & 32 Likely to Support Tax for More Police**

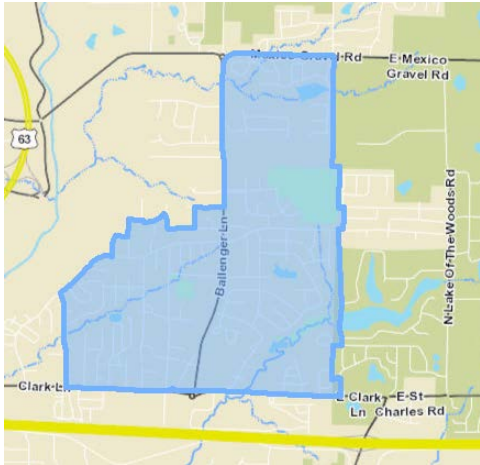


East leads city and Ward in support for both property and sales tax increases.

This may be the most dramatic proof that COU is making a difference in the neighborhood. *Might* be driven by: 1) increased satisfaction about overall Police service quality and feeling of safety; and 2) increased likelihood of hearing shots and being victimized.



## East Neighborhood



The neighborhood has a mix of new and old housing stock and a mix of rental and owner-occupied single family houses. Indian Hills Neighborhood Association is more active than associations in some areas west of Ballenger Lane. There are varied code violations due to the mix of housing age and type. New housing construction along McKee Street indicates real estate value in this area.

### Stress Index ^ #

Neighborhood -0.06943

Columbia average 0

### Population @ \*

1990	2,698
2000	4,653
2010	7,249

\*

2010 average persons per household 2.07

Percent of 2010 population of Hispanic ethnicity 4.2%

### Income # %\$

2010 - 2014 household median income \$39,421

Summer Food Program sites 1

2013 Free/Reduced Lunch participation 78.80%

### Public Safety +

2014 Police calls for service hotspot – Slight

2014 Fire medical calls for service hotspot - No

Satisfaction with public safety services – Neutral to Satisfied

Satisfaction with the overall feeling of safety – Neutral

Feeling of safety walking in neighborhoods at night – Neutral

### Housing \*

2010 housing units 3,575

2010 percent housing units vacant 12.6%

2010 percent of housing units rented 49.3%

Active rental certificates 1,332

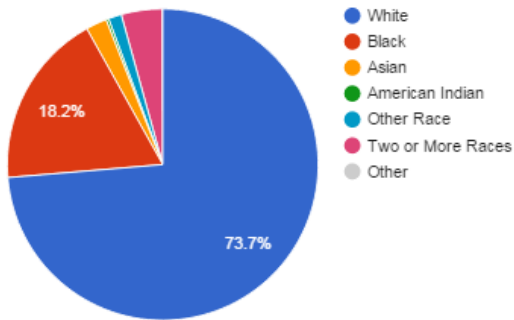
2014 energy site use intensity – Relatively high

Code enforcement cases since 2000 3,896

CDBG investment 2010-2014 \$143,744.92

Neighborhood associations: Hominy Branch; Indian Hills; Lake Shire Estates; Meadowvale; Zaring

2010 Population by Race





## **Partial List of Features and Observations**

### **Schools located within the area**

None

### **Other schools where area students may attend**

Alpha Hart Lewis Elementary

Battle Elementary

Shepard Elementary

Oakland Middle

Lange Middle

Battle High

### **Parks and recreation facilities**

Indian Hills Park – improvements scheduled with passage of sales tax

McKee Street Park

### **Services in neighborhood or nearby**

Precious Hearts Learning Center

### **Churches**

Church of Christ

Charity Baptist Church

Open Heart Baptist Church

### **Agencies and service providers**

Boone County Fire District Station #1

### **Community Gardens**

1 ~

### **Staff personal observations**

- Need traffic calming on Rice, McKee and Boyd
- Need additional sidewalks throughout
- Few property maintenance issues – foreclosures a problem
- Mobile homes part of housing supply

## **Data Sources**

^ City of Columbia unless noted

+ 2015 Columbia City Survey

@ 1990 and 2000 United States Census block level data

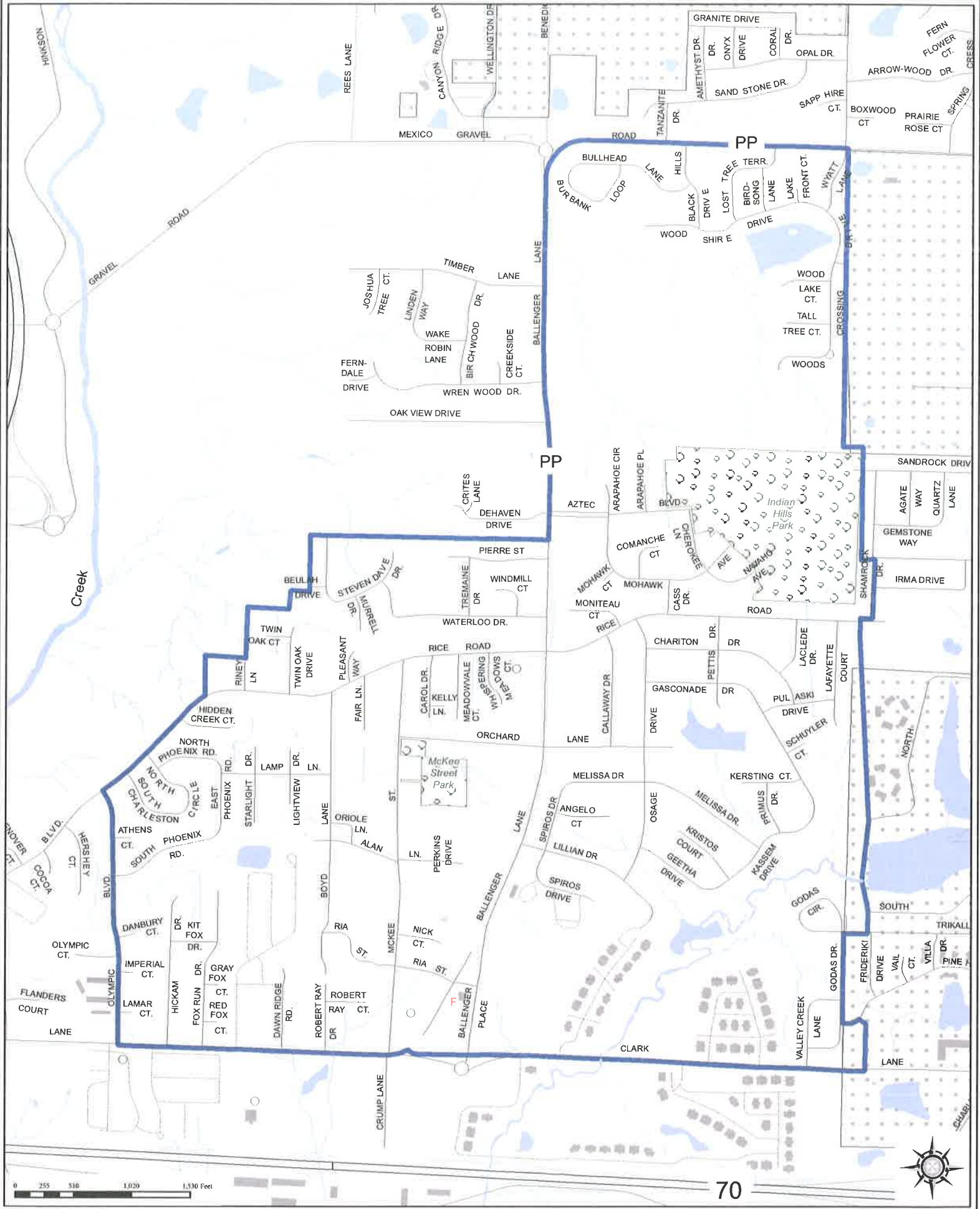
\* 2010 United States Census block level data

# 2013 United States Census 5-Year American Community Survey block group level data

% Columbia Public Schools

~ Community Garden Coalition

\$ We thank Drs. Jonathan R. Bradley, Christopher K. Wikle and Scott H. Holan for their assistance in estimating household median income. The analysis is based on methodology proposed in Bradley, J.R., Wikle, C.K., and Holan, S.H. (2015) Spatio-Temporal Change of Support with Application to American Community Survey Multi-Year Period Estimates, STAT, 4: 255-270



### COU Contributions to City's 2016 – 2019 Strategic Plan

<b>Economy</b> <b>More Living Wage Jobs</b>	<b>Social Equity</b> <b>All Individuals Thrive</b>	<b>Public Safety</b> <b>Improve Citizen Satisfaction</b>	<b>Infrastructure</b> <b>Build the Future Today</b>	<b>Operational Excellence</b> <b>Improve Workforce Performance, Engagement, Satisfaction</b>
<ul style="list-style-type: none"> <li>• Central Officer pilots Job Fair in Your Pocket app to help job applicants</li> <li>• App links people with National Career Readiness certification</li> <li>• Mentor students toward CARE program and City work experience</li> <li>• Guide adults to business development coaching</li> </ul>	<ul style="list-style-type: none"> <li>• Help finance higher education through Success Grants</li> <li>• Make safe neighborhoods and Police relationships key parts of social equity</li> <li>• Host and participate in events</li> <li>• Form school partnerships</li> <li>• Bring neighborhood leaders to internal team meetings</li> <li>• Participate in neighborhood meetings</li> <li>• Help renters with landlord issues</li> <li>• Consult on affordable housing development</li> </ul>	<ul style="list-style-type: none"> <li>• Establish COU</li> <li>• Community panel advises on COU officer hiring</li> <li>• Offer ride-alongs to citizens</li> <li>• Discuss data and operations with community members</li> <li>• Community training in Fair and Impartial Policing</li> <li>• Maintain active social media presence</li> </ul>	<ul style="list-style-type: none"> <li>• Distribute bus passes in neighborhoods</li> <li>• Consult on recreation opportunities (new North basketball goal)</li> <li>• Consult on park improvements</li> <li>• Consult on traffic flow</li> </ul>	<ul style="list-style-type: none"> <li>• CPD training in Fair and Impartial Policing</li> <li>• Participate in Building Inclusive Communities training</li> </ul>

**State of the COU: Supplement to Feb. 22, 2017 Analysis**

*Feb. 28, 2017*

<b>Summary of Top 4 Most Important Services for City to Provide Q2 – 2016 Citizen Survey</b>			<p>Even though it's rated most important in Central, percentage of people listing public safety in top 4 most important services lags behind city; Wards 1, 2 and 3; and North and East neighborhoods.</p> <p>Streets didn't score in top 4, but public health did.</p> <p>Central scored better than Ward 1 in only one measure: satisfaction with residential code enforcement.</p> <p>Overall feeling of safety increased from 36% to 50%.</p> <p>Overall quality of Police service decreased from 50% to 44%</p>
City	Ward 1	Central	
Public Safety .85	Public Safety .76	Public Safety .68	
Utilities .64	Utilities .60	Utilities .43	
Streets .58	Streets .44	Trash Service and Pub Health .40	
Trash Service .44	Trash Service .42	Transit .33	

<b>Summary of Top 4 Most Important Services for City to Provide Q2 – 2016 Citizen Survey</b>			<p>North top 4 choices in same order as city and Ward.</p> <p>North better than Ward in six public safety responses, including Police service quality lag measure.</p> <p>Overall feeling of safety increased from 44% to 53%.</p> <p>Overall quality of Police service increased from 56% to 62%.</p>
City	Ward 2	North	
Public Safety .85	Public Safety .87	Public Safety .83	
Utilities .64	Utilities .67	Utilities .60	
Streets .58	Streets .61	Streets .50	
Trash Service .44	Trash Service .41	Trash Service .33	

<b>Summary of Top 4 Most Important Services for City to Provide Q2 – 2016 Citizen Survey</b>			<p>Top 4 choices differ for East and Ward. Trash not in top 4, but public health is.</p> <p>North better than Ward in seven public safety responses, including Police service quality lag measure.</p> <p>Overall feeling of safety increased from 32% to 36%.</p> <p>Overall quality of Police service increased from 32% to 54%.</p>
City	Ward 3	East	
Public Safety .85	Public Safety .82	Public Safety .83	
Utilities .64	Streets .58	Streets .57	
Streets .58	Utilities .56	Utilities .55	
Trash Service .44	Trash Service .39	Public Health .36	

**Q21 Neighborhood Problems: Selected indicators associated with Police calls or complaints and Percentage of People who said they were Moderate – Major Problems**

Indicator	City		Ward 1		Central	
	2015	2016	2015	2016	2015	2016
21.1 Crime, drugs or violence	.28	.28	.24	.49	AREA NOT SAMPLED THIS YEAR	.70
21.9 Unsupervised children or teenagers	.19	.22	.20	.39		.63
21.10 Speeding on neighborhood streets	.39	.44	.33	.63		.76
21.17 Graffiti	.06	.05	.06	.12		.27
21.18 Abandoned cars or vehicles	.06	.05	.06	.13		.30

Indicator	City		Ward 2		North	
	2015	2016	2015	2016	2015	2016
21.1 Crime, drugs or violence	.28	.28	.29	.32	AREA NOT SAMPLED THIS YEAR	.45
21.9 Unsupervised children or teenagers	.19	.22	.21	.25		.30
21.10 Speeding on neighborhood streets	.39	.44	.34	.41		.44
21.17 Graffiti	.06	.05	.07	.04		.03
21.18 Abandoned cars or vehicles	.06	.05	.06	.03		.05

Indicator	City		Ward 3		East	
	2015	2016	2015	2016	2015	2016
21.1 Crime, drugs or violence	.28	.28	.29	.43	AREA NOT SAMPLED IN 2015	.51
21.9 Unsupervised children or teenagers	.19	.22	.17	.36		.48
21.10 Speeding on neighborhood streets	.39	.44	.38	.50		.53
21.17 Graffiti	.06	.05	.06	.06		.05
21.18 Abandoned cars or vehicles	.06	.05	.06	.09		.10

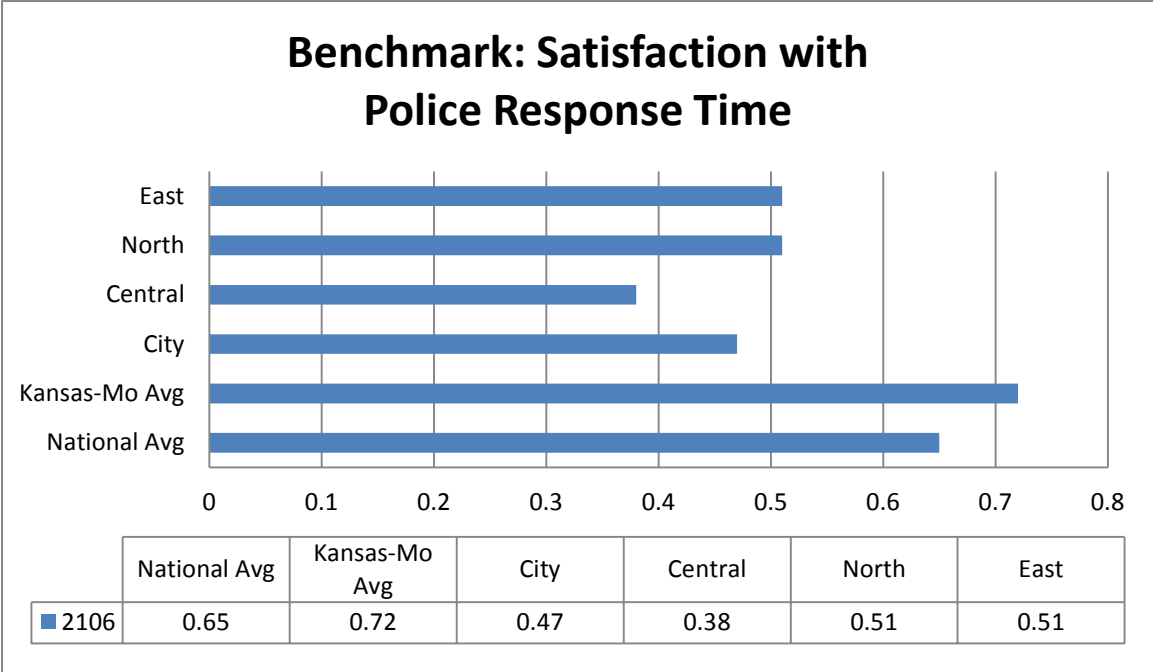
**Speeding apparently is universally perceived as the greatest problem across the city, in all Wards and in all neighborhoods.**

**Perception of problems is worse in neighborhoods than in Wards.**

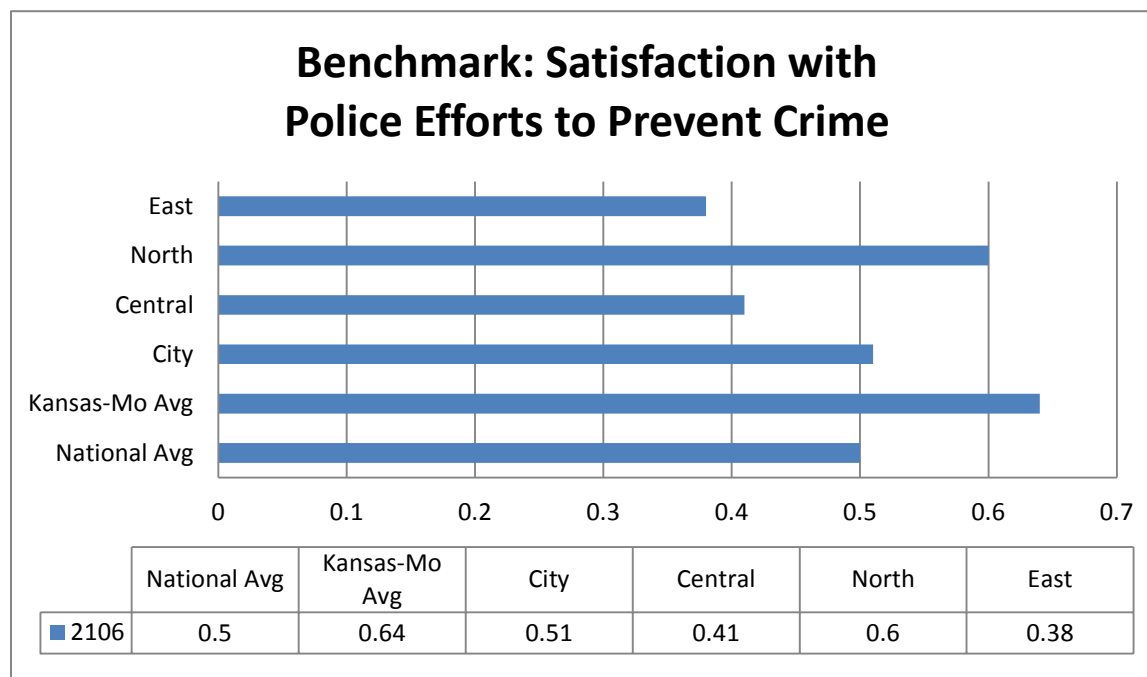
**Everything is perceived to be worse to those responding in the Central neighborhood.**



North and East exceed City but behind regional and national benchmarks.



North and East exceed City but behind regional and national benchmarks.



**North exceeds City and national benchmark; approaching regional benchmark.**

#### **Regional Benchmark Cities**

• Ballwin, Missouri • Blue Springs, Missouri • Bonner Springs, Kansas • Butler, Missouri • Coffeyville, Kansas • Columbia, Missouri • Creve Coeur, Missouri • Excelsior Springs, Missouri • Gardner, Kansas • Grandview, Missouri • Harrisonville, Missouri • Independence, Missouri • Johnson County, Kansas • Kansas City, Missouri • Lawrence, Kansas • Leawood, Kansas • Lee's Summit, Missouri • Lenexa, Kansas • Liberty, Missouri • Merriam, Kansas • Mission, Kansas • North Kansas City, Missouri • O'Fallon, Missouri • Olathe, Kansas • Overland Park, Kansas • Platte City, Missouri • Pleasant Hill, Missouri • Raymore, Missouri • Riverside, Missouri • Roeland Park, Kansas • Shawnee, Kansas • Spring Hill, Kansas • Unified Government of Kansas City and Wyandotte County National and Regional Benchmarks.

**Columbia Police Department Data Comparison in Strategic Plan Areas – March 13, 2017**

**Calls for Service**

	<b>Citywide</b>	<b>Central</b>		<b>East</b>		<b>North</b>		
	<b>Count</b>	<b>Count</b>	<b>%</b>	<b>Count</b>	<b>%</b>	<b>Count</b>	<b>%</b>	
2016-2017	73903	3648	4.94	2478	3.35	1638	2.22	<b>City down by 2,571 since 2015 - 2016.</b>
Five year breakdown								
Average	75868	4298	5.66	2499	3.29	1894	2.50	
Max	78545	4996	6.68	2535	3.48	2080	2.65	
Min	72864	3940	5.08	2429	3.18	1738	2.27	
2015-2016	76474	4163	5.44	2429	3.18	2018	2.64	<b>Though calls up in East, Central and North drove one-third of total decrease.</b>
2014-2015	78545	3987	5.08	2534	3.23	2080	2.65	
2013-2014	76641	3940	5.14	2464	3.21	1738	2.27	
2012-2013	72864	4403	6.04	2535	3.48	1892	2.60	
2011-2012	74816	4996	6.68	2532	3.38	1742	2.33	

**Reports**

	<b>Citywide</b>	<b>Central</b>		<b>East</b>		<b>North</b>		
	<b>Count</b>	<b>Count</b>	<b>%</b>	<b>Count</b>	<b>%</b>	<b>Count</b>	<b>%</b>	
2016-2017	13055	692	5.30	398	3.05	304	2.33	<b>City down by 815 since 2015 – 2016.</b>
Five year breakdown								
Average	14322	866	6.04	434	3.03	367	2.57	
Max	14831	1024	6.90	480	3.46	440	3.12	
Min	13870	769	5.30	387	2.67	326	2.20	
2015-2016	13870	841	6.06	480	3.46	358	2.58	<b>All neighborhoods drove one-third of the decrease.</b>
2014-2015	14096	770	5.46	402	2.85	440	3.12	
2013-2014	14507	769	5.30	387	2.67	360	2.48	
2012-2013	14304	924	6.46	442	3.09	353	2.47	
2011-2012	14831	1024	6.90	457	3.08	326	2.20	

**Shots Fired/Heard Calls**

	<b>Citywide</b>	<b>Central</b>		<b>East</b>		<b>North</b>		
	<b>Count</b>	<b>Count</b>	<b>%</b>	<b>Count</b>	<b>%</b>	<b>Count</b>	<b>%</b>	
2016-2017	393	49	0.38	19	0.15	17	0.13	<b>City down by 102 since 2015 – 2016.</b>
Five year breakdown								
Average	435	49	11.26	33	7.59	22	5.06	
Max	495	68	0.46	48	0.35	37	0.27	
Min	372	34	0.23	25	0.18	13	0.09	
2015-2016	495	52	0.37	48	0.35	37	0.27	<b>All neighborhoods drove 20% of the decrease.</b>
2014-2015	372	38	0.27	25	0.18	29	0.21	
2013-2014	373	34	0.23	29	0.20	18	0.12	
2012-2013	478	53	0.37	26	0.18	13	0.09	
2011-2012	457	68	0.46	37	0.25	13	0.09	



## Criminal Homicide

	Citywide	Central		East		North		
	Count	Count	%	Count	%	Count	%	
2016-2017	6	1	16.67	0	0.00	0	0.00	City up 6 since 2015 – 2016.
Five year breakdown								
Average	3	0	12.50	0	6.25	0	0.00	
Max	6	1	25.00	1	16.67	0	0.00	
Min	0	0	0.00	0	0.00	0	0.00	
2015-2016	0	0	0.00	0	0.00	0	0.00	Central the only neighborhood with a homicide.
2014-2015	5	1	20.00	0	0.00	0	0.00	
2013-2014	6	0	0.00	1	16.67	0	0.00	
2012-2013	4	1	25.00	0	0.00	0	0.00	
2011-2012	1	0	0.00	0	0.00	0	0.00	

## Forcible Rape

	Citywide	Central		East		North		
	Count	Count	%	Count	%	Count	%	
2016-2017	116	2	1.72	6	5.17	5	4.31	City up by 23 since 2015 – 2016.
Five year breakdown								
Average	62	4	7.07	3	5.14	2	2.89	
Max	93	11	11.83	5	7.25	3	4.35	
Min	33	2	4.23	2	4.23	1	2.15	
2015-2016	93	11	11.83	4	4.30	2	2.15	Down in Central. East and North account for 22% of the increase.
2014-2015	69	3	4.35	5	7.25	3	4.35	
2013-2014	71	3	4.23	3	4.23	2	2.82	
2012-2013	45	3	6.67	2	4.44	1	2.22	
2011-2012	33	2	6.06	2	6.06	1	3.03	

## Robbery

	Citywide	Central		East		North		
	Count	Count	%	Count	%	Count	%	
2016-2017	122	7	5.74	1	0.82	1	0.82	City down by 29 since 2015 – 2016.
Five year breakdown								
Average	143	14	9.82	4	2.52	1	0.84	
Max	170	20	12.35	5	3.20	2	1.60	
Min	105	7	6.67	2	1.23	0	0.00	
2015-2016	151	15	9.93	4	2.65	0	0.00	Slight increase in North. Central and East drove 38% of the decrease.
2014-2015	125	11	8.80	4	3.20	2	1.60	
2013-2014	105	7	6.67	3	2.86	0	0.00	
2012-2013	170	17	10.00	5	2.94	2	1.18	
2011-2012	162	20	12.35	2	1.23	2	1.23	

## Aggravated Assault

	Citywide	Central		East		North		
	Count	Count	%	Count	%	Count	%	
2016-2017	306	25	8.17	20	6.54	18	5.88	City down by 117 since 2015 – 2016.  Neighborhoods drove 55% of the decrease.
Five year breakdown								
Average	310	39	12.66	19	6.14	16	5.17	
Max	423	59	15.65	37	10.45	32	12.45	
Min	201	20	7.78	6	2.07	5	1.33	
2015-2016	423	58	13.71	37	8.75	32	7.57	
2014-2015	257	20	7.78	14	5.45	32	12.45	
2013-2014	201	21	10.45	21	10.45	5	2.49	
2012-2013	290	38	13.10	6	2.07	6	2.07	
2011-2012	377	59	15.65	17	4.51	5	1.33	

## Burglary

	Citywide	Central		East		North		
	Count	Count	%	Count	%	Count	%	
2016-2017	526	29	5.51	33	6.27	13	2.47	City down by 323 since 2015 – 2016.  Up slightly in Central. East and North drove 9% of the decrease.
Five year breakdown								
Average	780	32	4.08	44	5.64	38	4.82	
Max	849	49	6.14	66	8.27	41	5.42	
Min	737	17	2.25	28	3.70	32	4.24	
2015-2016	849	24	2.83	38	4.48	36	4.24	
2014-2015	757	17	2.25	28	3.70	41	5.42	
2013-2014	737	34	4.61	33	4.48	32	4.34	
2012-2013	758	35	4.62	55	7.26	40	5.28	
2011-2012	798	49	6.14	66	8.27	39	4.89	

## Larceny - Theft

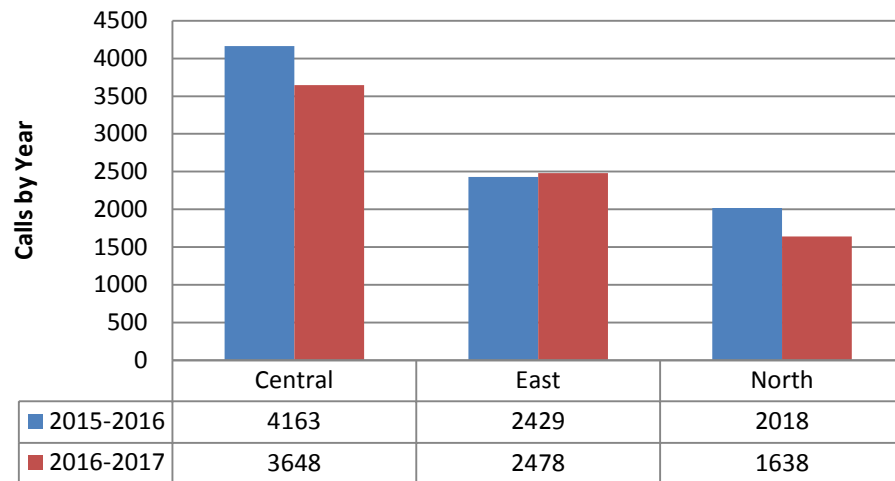
	Citywide	Central		East		North		
	Count	Count	%	Count	%	Count	%	
2016-2017	2496	85	3.41	43	1.72	32	1.28	City down by 115 since 2015 – 2016.  Neighborhoods drove 24% of the decrease.
Five year breakdown								
Average	3163	109	3.44	60	1.90	55	1.74	
Max	3592	149	4.39	72	2.18	68	1.93	
Min	2611	95	2.87	48	1.34	35	1.34	
2015-2016	2611	95	3.64	57	2.18	35	1.34	
2014-2015	2907	97	3.34	62	2.13	53	1.82	
2013-2014	3592	103	2.87	48	1.34	68	1.89	
2012-2013	3311	100	3.02	72	2.17	64	1.93	
2011-2012	3395	149	4.39	62	1.83	55	1.62	

**Motor Vehicle Theft**

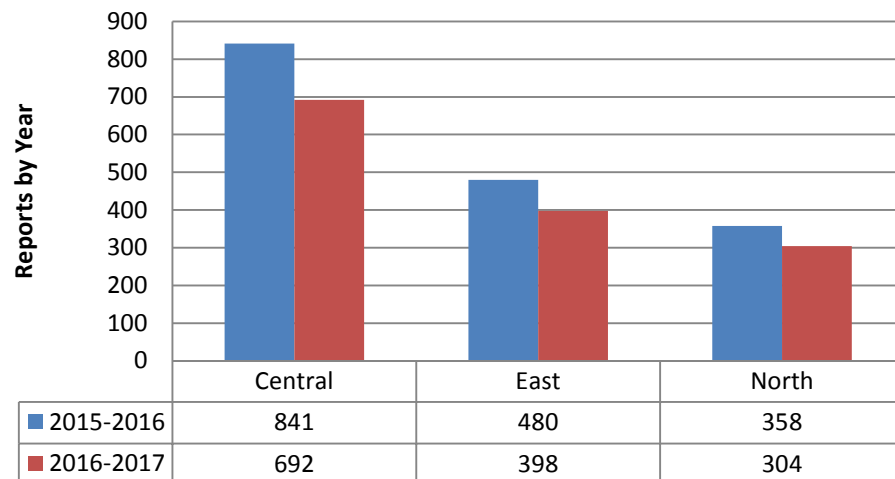
	Citywide	Central		East		North		
	Count	Count	%	Count	%	Count	%	
2016-2017	283	10	3.53	6	2.12	10	3.53	<b>City up by 25 since 2015 – 2016.</b>
Five year breakdown								
Average	190	13	6.72	8	4.20	4	1.89	
Max	258	16	9.41	12	6.47	7	4.12	
Min	162	9	4.81	4	2.47	1	0.57	
2015-2016	258	15	5.81	12	4.65	4	1.55	<b>Down in Central and East. North accounted for 24% of increase.</b>
2014-2015	175	9	5.14	8	4.57	1	0.57	
2013-2014	187	9	4.81	5	2.67	3	1.60	
2012-2013	162	15	9.26	4	2.47	3	1.85	
2011-2012	170	16	9.41	11	6.47	7	4.12	

## Crime Rate Changes in Strategic Neighborhoods: 2015 – 2017

### Calls for Service



### Reports



### 3.4 Satisfaction w/ Overall Feeling of Safety in the City



Strategic lag measure for public safety: Increase overall feeling of safety by 6% by 2019.

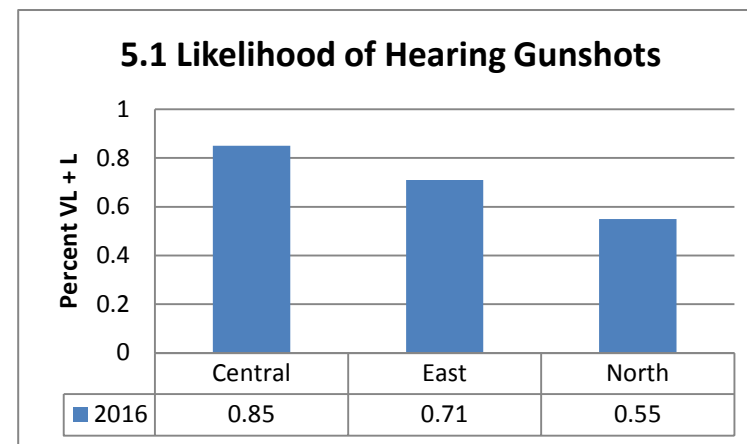
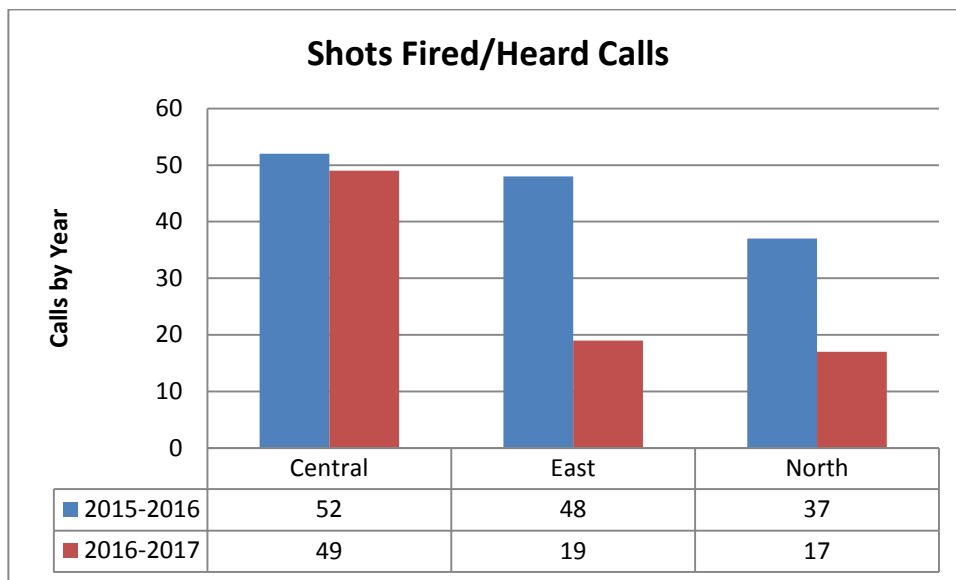
- In 2016, all neighborhoods feel safer than last year.
- **NORTH AND CENTRAL SATISFACTION INCREASED BY MORE THAN 6% FROM 2015.**
- City increased from 54% to 57%

**Calls for Service:** Calls from residents who want the presence of law enforcement to resolve, correct or assist with a situation.

- **City down** by 2,571 (from 76,474 to 73,903) since 2015 -2016.
- **Though calls up in East, Central and North drove one-third of total decrease.**

**Reports:** Information gathered and documented by an officer in reference to a call for service

- **City down** by 815 (from 13,870 to 13,055) since 2015 – 2016.
- **All neighborhoods drove one-third of the decrease.**

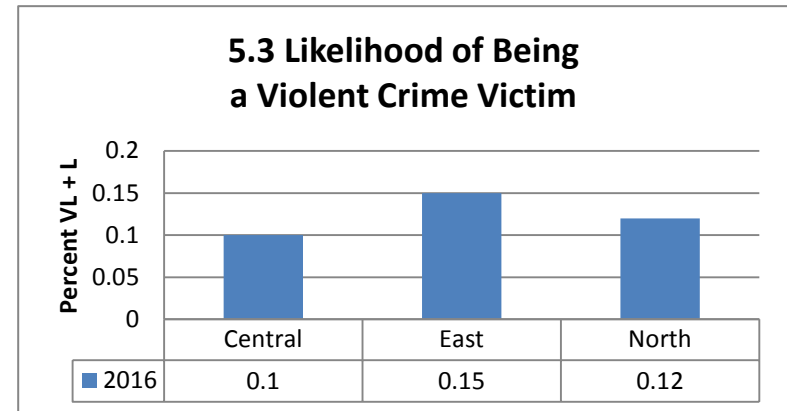
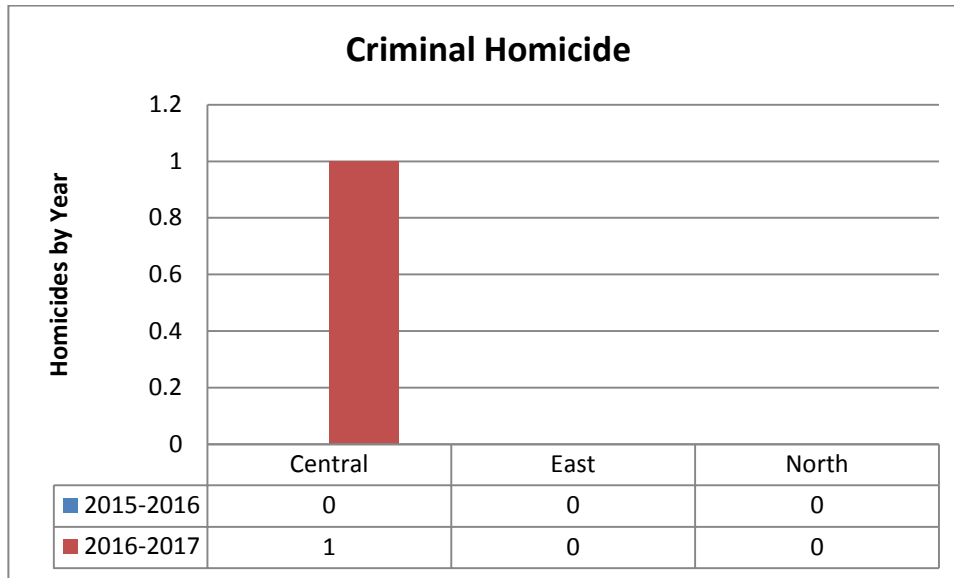


In 2016, all neighborhoods feel more at risk than City as a whole (40% City).

**Shots Fired/Heard:** A call for service informing law enforcement of a discharge of a firearm either being heard or witnessed by the resident.

- **City down** by 102 (from 495 to 393) since 2015 – 2016.
- **All neighborhoods drove 20% of the decrease.**

## Violent Crime: 2015 – 2017



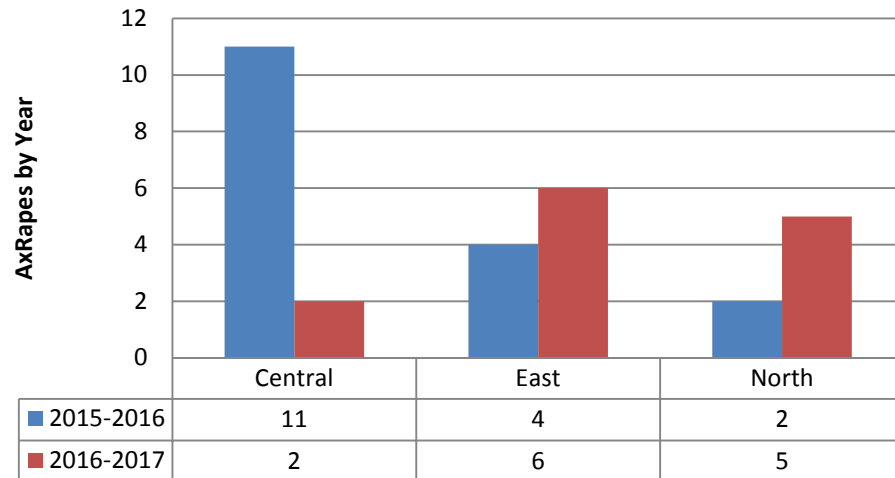
In 2016, all neighborhoods feel more at risk than City as a whole (9% City).

### Uniform Crime Reporting Statistics (UCR) Definition

#### **Criminal Homicide**

- a. Murder and non-negligent manslaughter: The willful (non-negligent) killing of one human being by another. Excludes deaths caused by negligence, attempts to kill, assaults to kill, suicides and accidental deaths. UCR program classifies justifiable homicides separately and limits the definition to:
  - The killing of a felon by a law enforcement officer in the line of duty; or
  - The killing of a felon, during the commission of a felony, by a private citizen.
- b. Manslaughter by negligence: The killing of another person through gross negligence. Excludes deaths of persons due to their own negligence, accidental deaths not resulting from gross negligence and traffic fatalities.
  - **City up 6 (from 0 to 6) since 2015 – 2016.**
  - **Central the only neighborhood with a homicide.**

### Forcible Rape



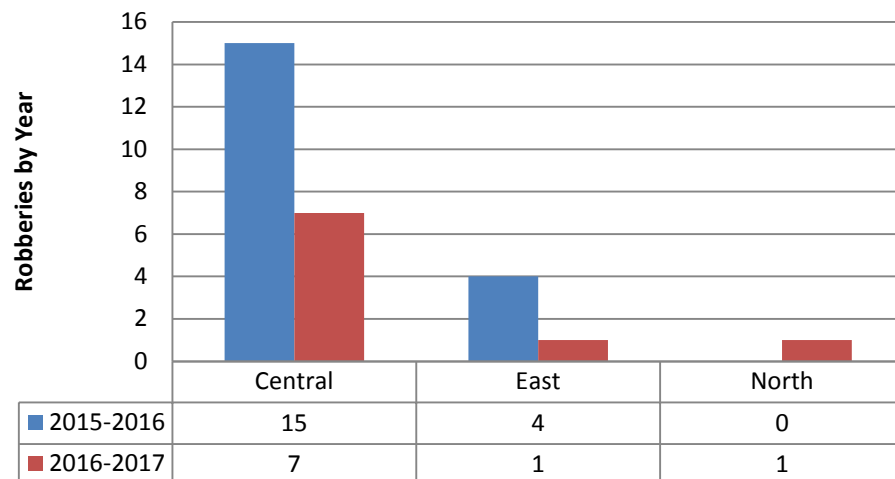
#### Uniform Crime Reporting Statistics (UCR) Definition

**Forcible Rape/Legacy Rape:** The carnal knowledge of a female forcibly and against her will. Includes rapes by force and attempts or assaults to rape, regardless of the victim's age. Excludes statutory offenses (no force used, victim under age of consent).

**Revised Rape:** Penetration, no matter how slight, of the vagina or anus with any body part or object, or oral penetration by a sex organ of another person, without victim's consent. Also includes attempts or assaults to commit rape, but excludes statutory rape and incest. UCR program adopted this definition of SRS rape in December 2011. This change can be seen in UCR data starting in 2013. Any data reported under the older definition of rape will be called "legacy rape".

- **City up** by 23 (from 93 to 116) since 2015 – 2016.
- **Down in Central. East and North account for 22% of the increase**

### Robbery

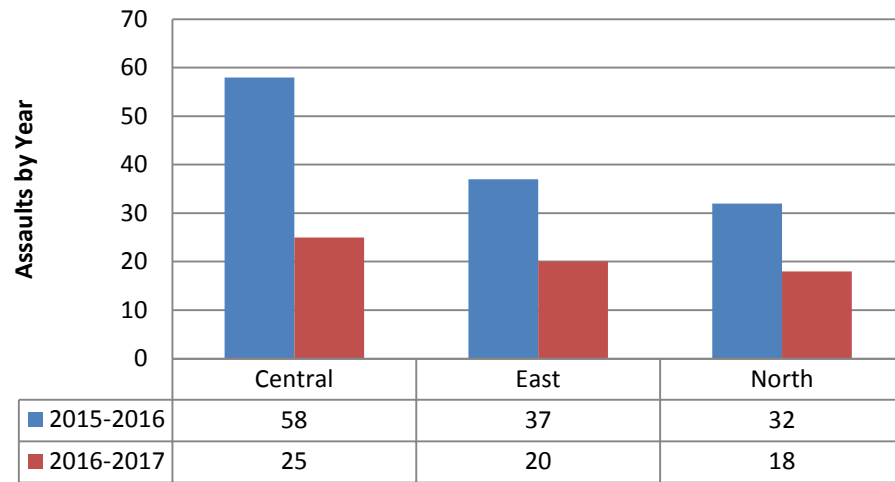


#### Uniform Crime Reporting Statistics (UCR) Definition

**Robbery:** The taking or attempting to take anything of value from the care, custody or control of a person or persons by force or threat of force or violence and/or by putting the victim in fear.

- **City down** by 29 (from 151 to 122) since 2015 – 2016.
- **Slight increase in North. Central and East drove 38% of the decrease.**

### Aggravated Assault



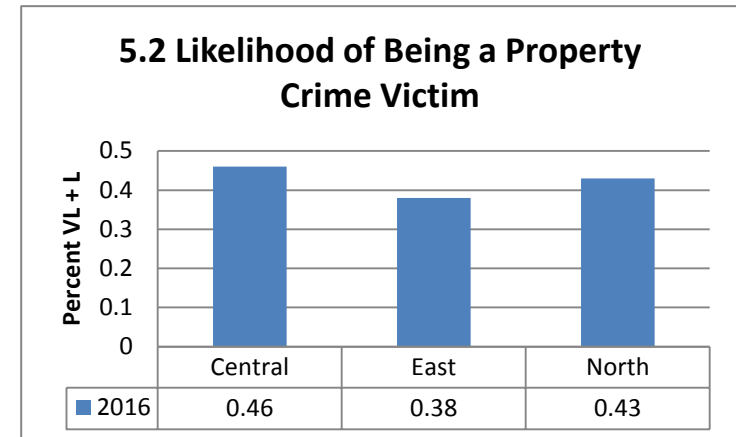
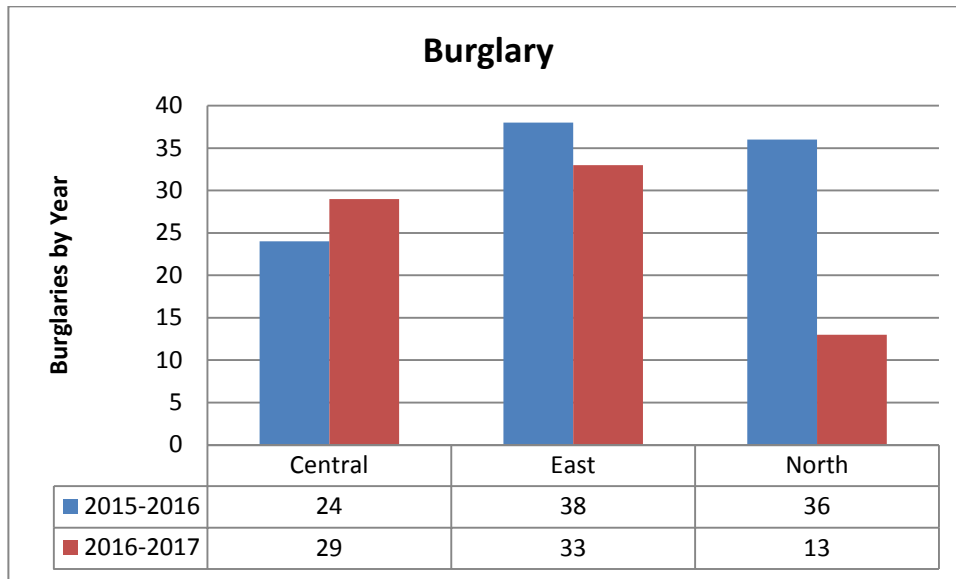
#### Uniform Crime Reporting Statistics (UCR) Definition

**Aggravated Assault:** An unlawful attack by one person upon another for the purpose of inflicting severe or aggravated bodily injury. This type of assault usually is accompanied by the use of a weapon or by means likely to produce death or great bodily harm. Excludes simple assaults.

- **City down** by 117 (from 423 to 306) since 2015 – 2016.
- **Neighborhoods drove 55% of the decrease.**



## Property Crime: 2015 – 2017

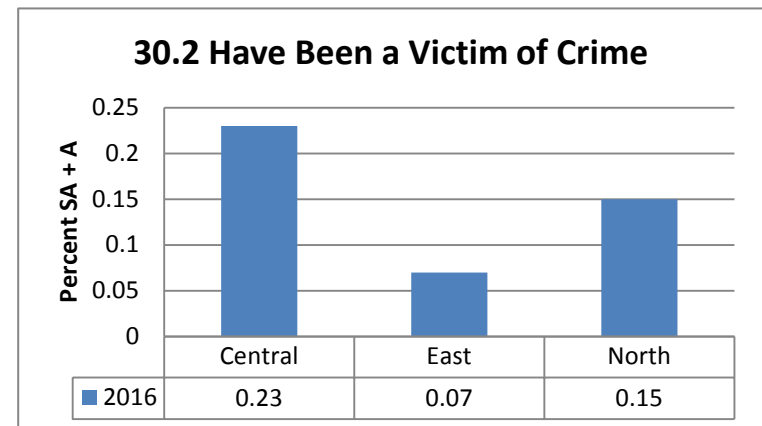


In 2016, Central and North feel more at risk than City as a whole. East feels same risk as City (38% City).

### Uniform Crime Reporting Statistics (UCR) Definition

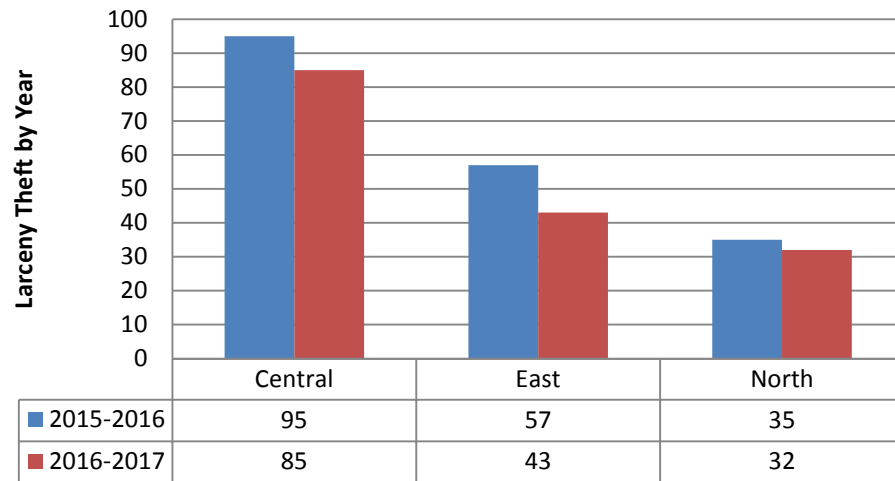
**Burglary (breaking or entering):** The unlawful entry of a structure to commit a felony or a theft. Includes attempted forcible entry.

- **City down** by 323 (from 849 to 526) since 2015 – 2016.
- **Up slightly in Central. East and North drove 9% of the decrease.**



In 2016, Central and North neighborhoods report higher percentage of crime victimization than City as a whole. East reports lower percentage (10% City).

### Larceny - Theft

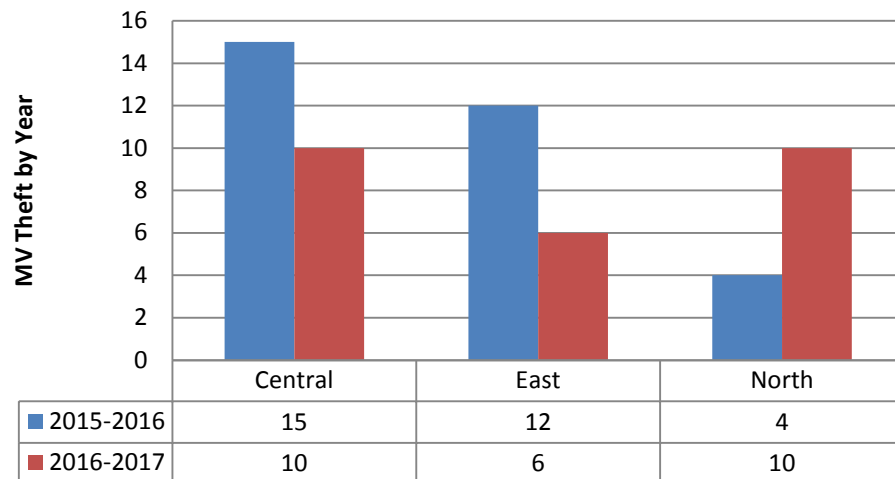


#### Uniform Crime Reporting Statistics (UCR) Definition

**Larceny-theft (except motor vehicle theft):** The unlawful taking, carrying, leading, or riding away of property from the possession or constructive possession of another. Examples are thefts of bicycles, motor vehicle parts and accessories, shoplifting, pocket-picking or the stealing of any property or article that is not taken by force and violence or by fraud. Includes attempted larcenies. Excludes embezzlement, confidence games, forgery, check fraud, etc.

- **City down** by 115 (from 2,611 to 2,496) since 2015 – 2016.
- **All neighborhoods drove 24% of the decrease.**

### Motor Vehicle Theft



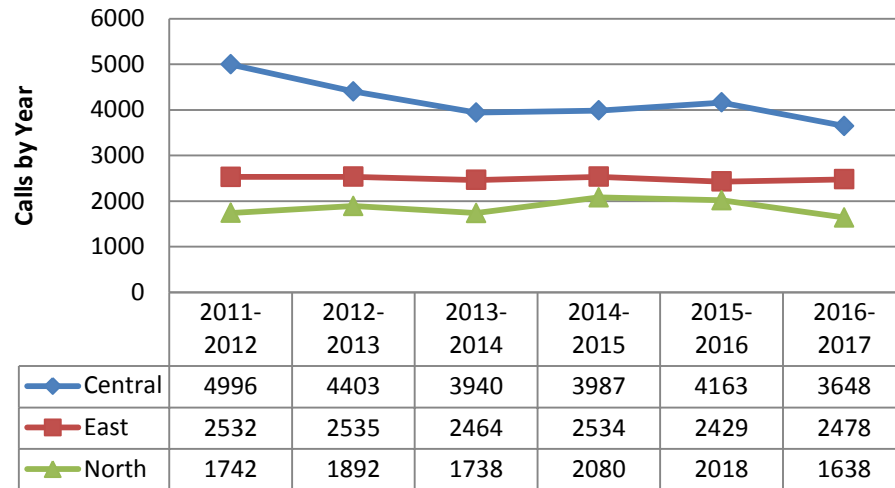
#### Uniform Crime Reporting Statistics (UCR) Definition

**Motor vehicle theft:** The theft or attempted theft of a motor vehicle. A motor vehicle is self-propelled and runs on land surface, not on rails. Excludes motorboats, construction equipment, airplanes and farming equipment.

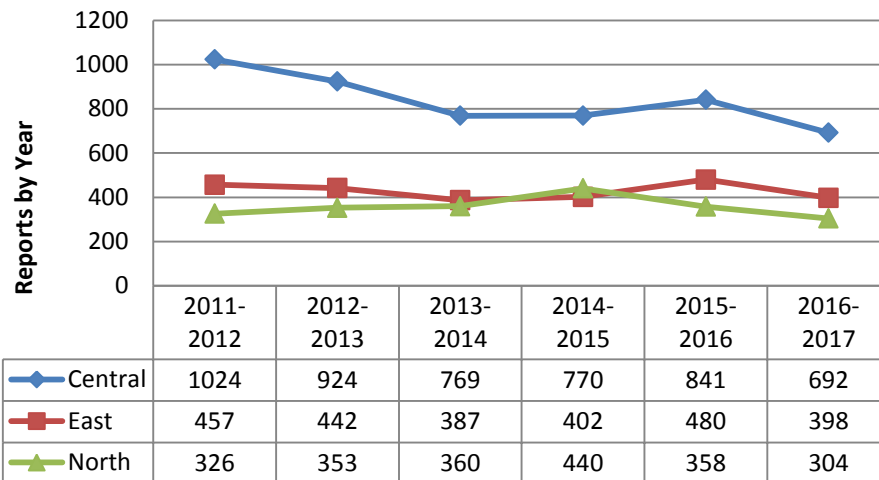
- **City up** by 25 (from 258 to 283) since 2015 – 2016.
- **Down in Central and East. North accounted for 24% of increase.**

## Crime Rate Changes in Strategic Neighborhoods: 2011 – 2017

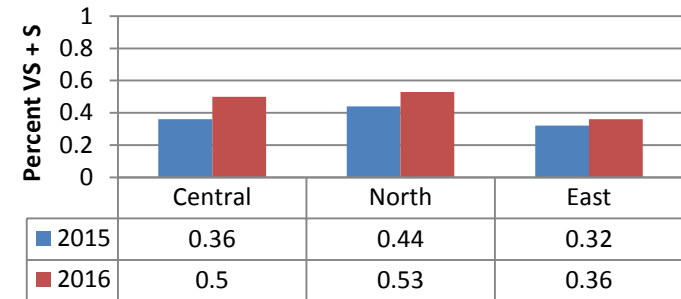
### Calls for Service



### Reports



### 3.4 Satisfaction w/ Overall Feeling of Safety in the City



Strategic lag measure for public safety: Increase overall feeling of safety by 6% by 2019.

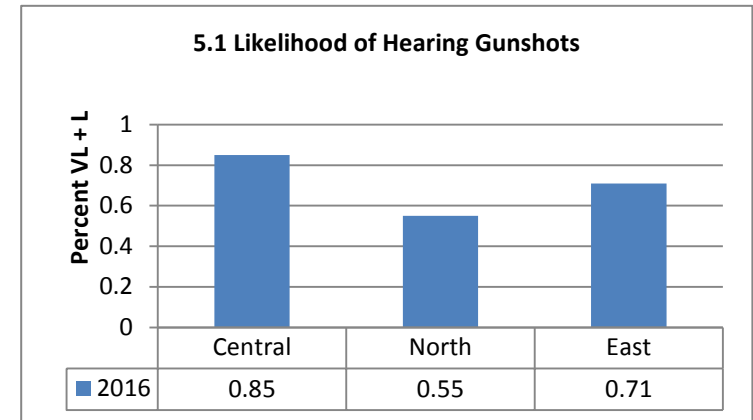
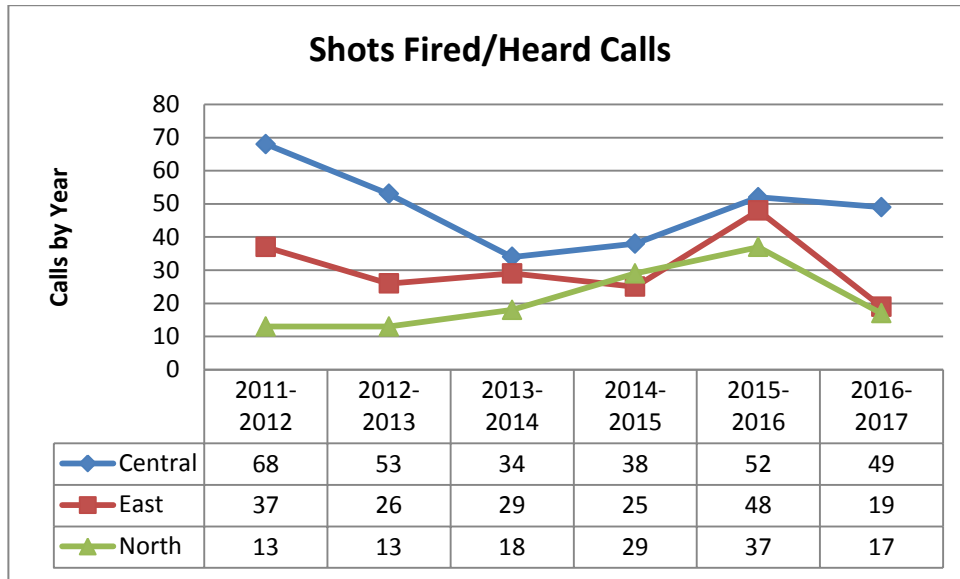
- In 2016, all neighborhoods feel safer than last year.
- **NORTH AND CENTRAL SATISFACTION INCREASED BY MORE THAN 6% FROM 2015.**
- City increased from 54% to 57%

**Calls for Service:** Calls from residents who want the presence of law enforcement to resolve, correct or assist with a situation.

- City five-year average = 75,868
- City five-year max = 78,545
- City five-year min = 72,864

**Reports:** Information gathered and documented by an officer in reference to a call for service.

- City five-year average = 14,322
- City five-year max = 14,831
- City five-year min = 13,870

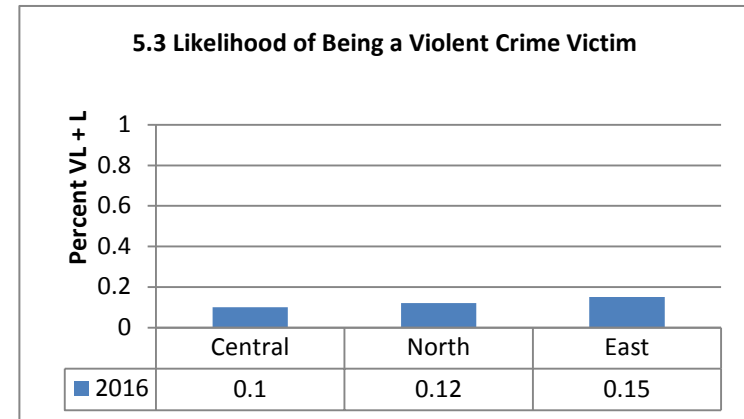
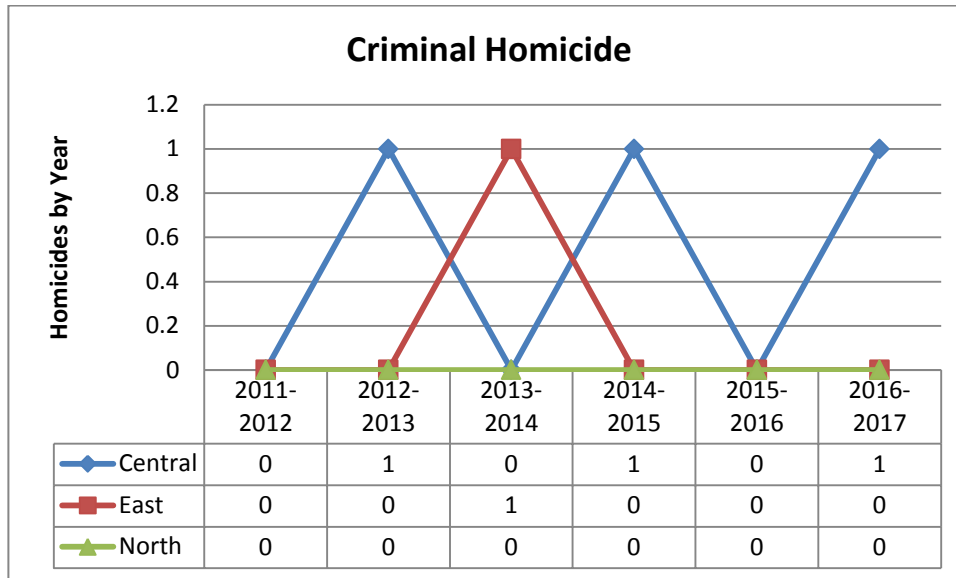


**Shots Fired/Heard:** A call for service informing law enforcement of a discharge of a firearm either being heard or witnessed by the resident.

- City five-year average = 435
- City five-year max = 495
- City five-year min = 372

In 2016, all neighborhoods feel more at risk than City as a whole (40% City).

## Violent Crime: 2011 – 2017



### Uniform Crime Reporting Statistics (UCR) Definition

#### **Criminal Homicide**

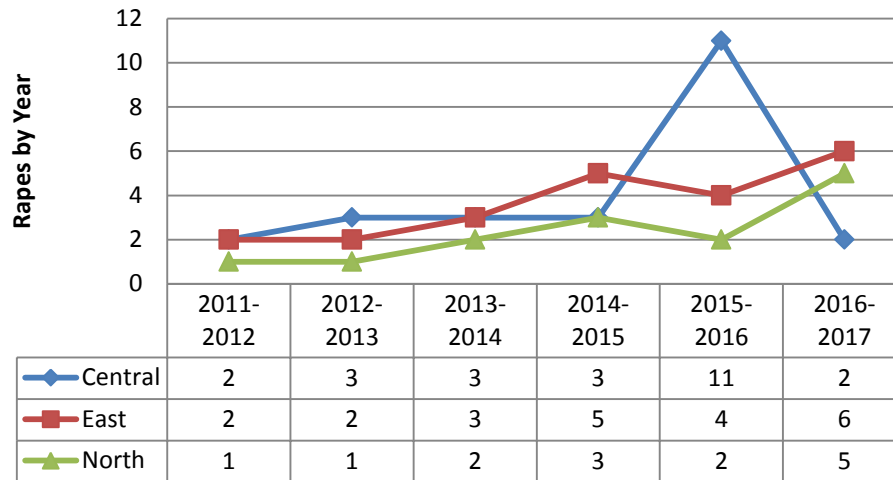
- a. Murder and non-negligent manslaughter: The willful (non-negligent) killing of one human being by another. Excludes deaths caused by negligence, attempts to kill, assaults to kill, suicides and accidental deaths. UCR program classifies justifiable homicides separately and limits the definition to:
  - The killing of a felon by a law enforcement officer in the line of duty; or
  - The killing of a felon, during the commission of a felony, by a private citizen.
- b. Manslaughter by negligence: The killing of another person through gross negligence. Excludes deaths of persons due to their own negligence, accidental deaths not resulting from gross negligence and traffic fatalities.

In 2016, all neighborhoods feel more at risk than City as a whole (9% City).

#### **Criminal Homicide**

- City five-year average = 3
- City five-year max = 6
- City five-year min = 0

## Forcible Rape



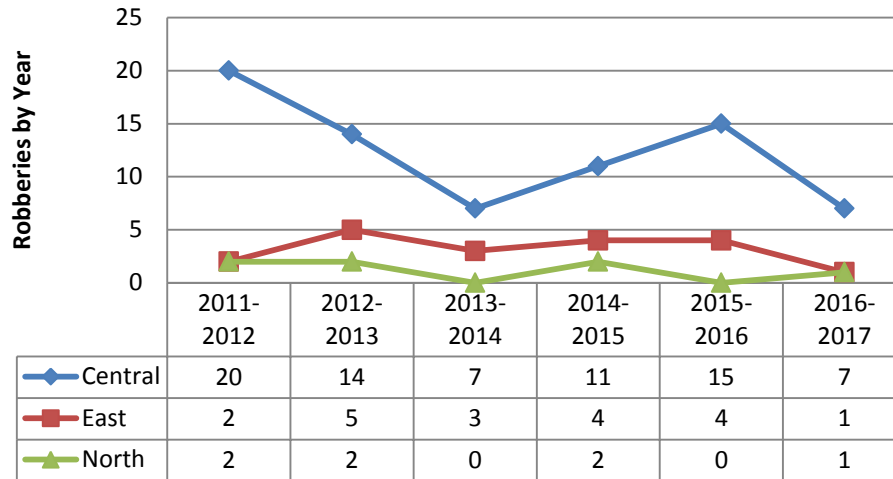
### Uniform Crime Reporting Statistics (UCR) Definition

**Forcible Rape/Legacy Rape:** The carnal knowledge of a female forcibly and against her will. Includes rapes by force and attempts or assaults to rape, regardless of the victim's age. Excludes statutory offenses (no force used, victim under age of consent).

**Revised Rape:** Penetration, no matter how slight, of the vagina or anus with any body part or object, or oral penetration by a sex organ of another person, without victim's consent. Also includes attempts or assaults to commit rape, but excludes statutory rape and incest. UCR program adopted this definition of SRS rape in December 2011. This change can be seen in UCR data starting in 2013. Any data reported under the older definition of rape will be called "legacy rape."

- City five-year average = 62
- City five-year max = 93
- City five-year min = 33

## Robbery

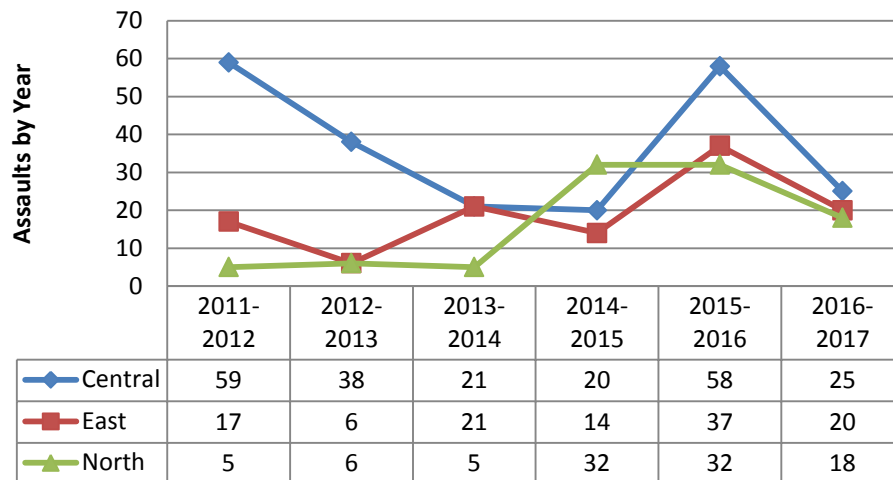


### Uniform Crime Reporting Statistics (UCR) Definition

**Robbery:** The taking or attempting to take anything of value from the care, custody or control of a person or persons by force or threat of force or violence and/or by putting the victim in fear.

- City five-year average = 143
- City five-year max = 170
- City five-year min = 105

## Aggravated Assault

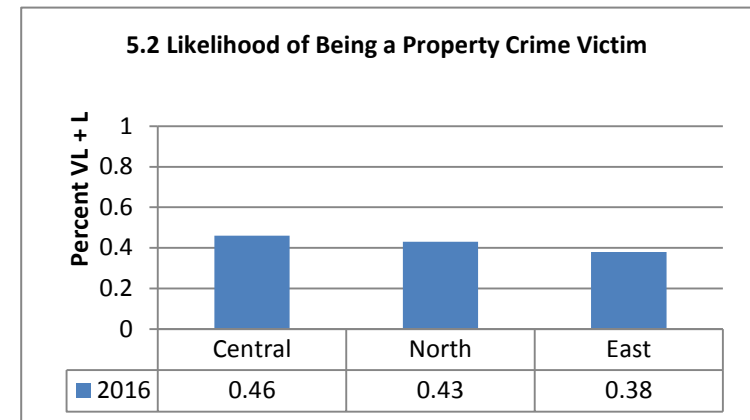
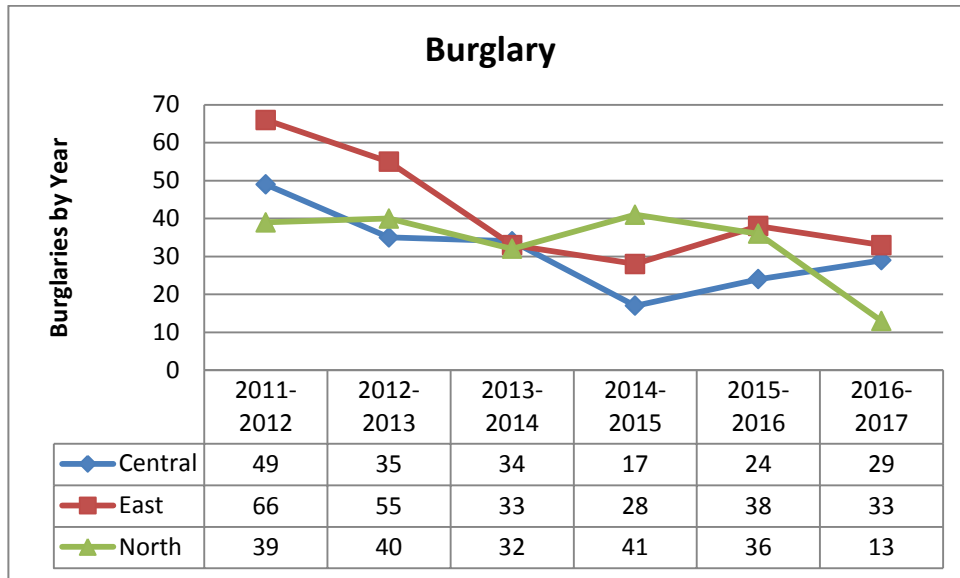


### Uniform Crime Reporting Statistics (UCR) Definition

**Aggravated Assault:** An unlawful attack by one person upon another for the purpose of inflicting severe or aggravated bodily injury. This type of assault usually is accompanied by the use of a weapon or by means likely to produce death or great bodily harm. Excludes simple assaults.

- City five-year average = 310
- City five-year max = 423
- City five-year min = 201

## Property Crime: 2011 – 2017

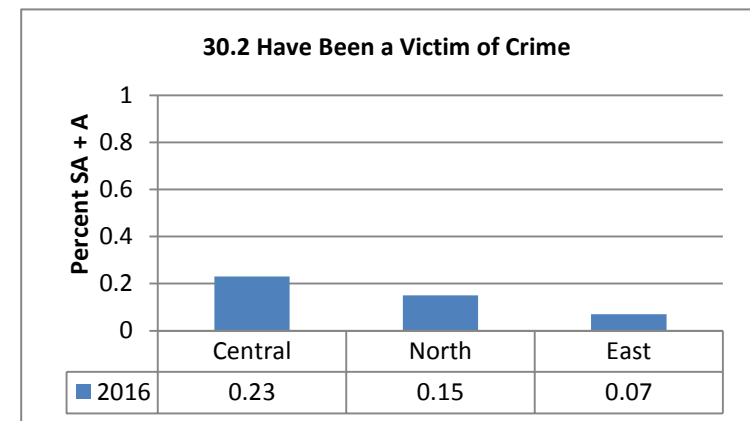


In 2016, Central and North feel more at risk than City as a whole. East feels same risk as City (38% City).

### Uniform Crime Reporting Statistics (UCR) Definition

**Burglary (breaking or entering):** The unlawful entry of a structure to commit a felony or a theft. Includes attempted forcible entry.

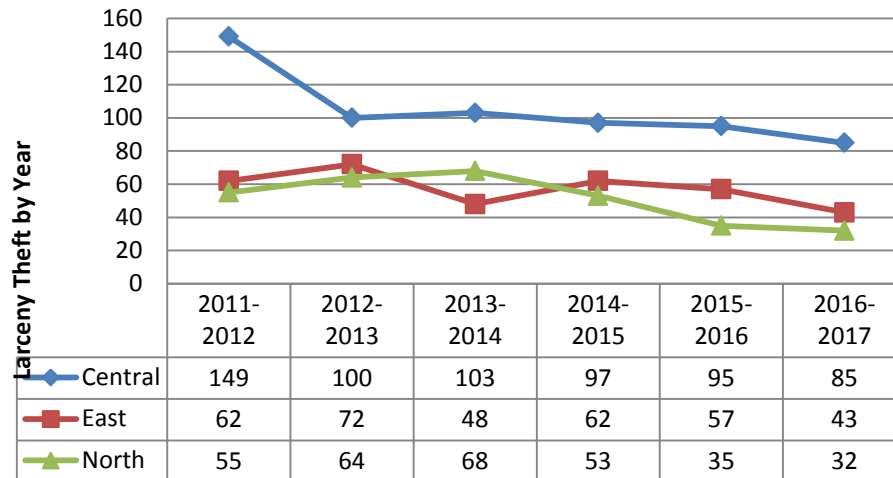
- City five-year average = 780
- City five-year max = 849
- City five-year min = 737



In 2016, Central and North neighborhoods report higher percentage of crime victimization than City as a whole. East reports lower percentage (10% City).



### Larceny - Theft

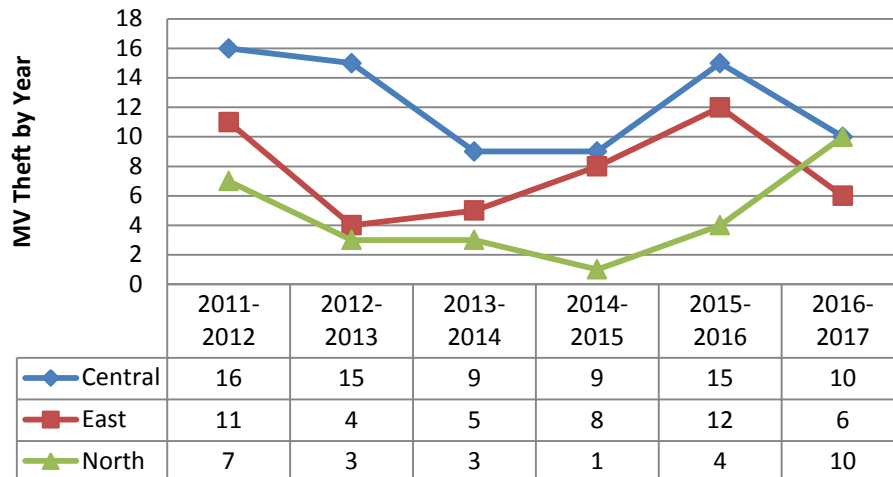


#### Uniform Crime Reporting Statistics (UCR) Definition

**Larceny-theft (except motor vehicle theft):** The unlawful taking, carrying, leading, or riding away of property from the possession or constructive possession of another. Examples are thefts of bicycles, motor vehicle parts and accessories, shoplifting, pocket-picking or the stealing of any property or article that is not taken by force and violence or by fraud. Includes attempted larcenies. Excludes embezzlement, confidence games, forgery, check fraud, etc.

- City five-year average = 3,163
- City five-year max = 3,592
- City five-year min = 2,611

### Motor Vehicle Theft



#### Uniform Crime Reporting Statistics (UCR) Definition

**Motor vehicle theft:** The theft or attempted theft of a motor vehicle. A motor vehicle is self-propelled and runs on land surface, not on rails. Excludes motorboats, construction equipment, airplanes and farming equipment.

- City five-year average = 190
- City five-year max = 258
- City five-year min = 162