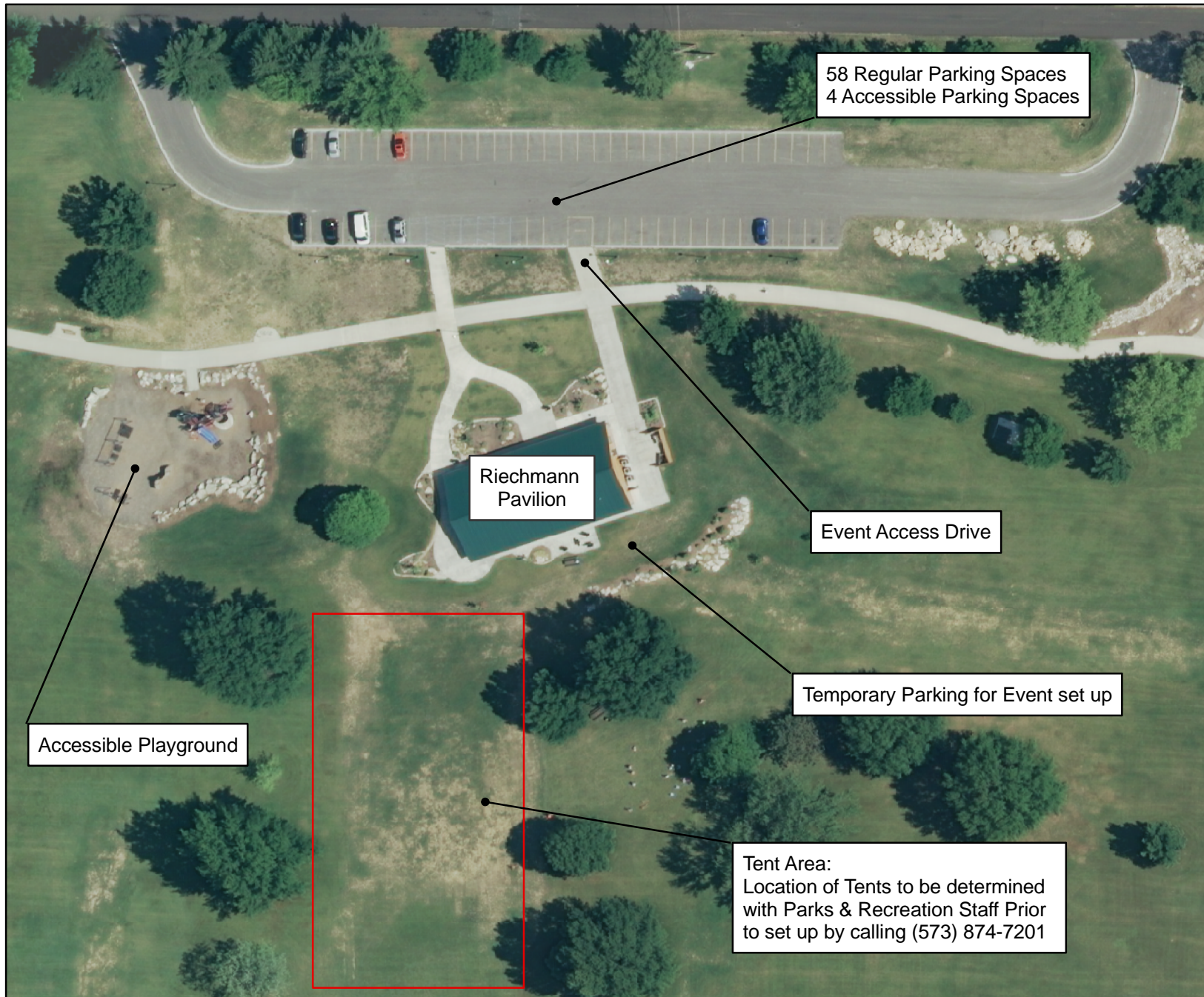


# Riechmann Pavilion @ Stephens Lake Park

2300 E. Walnut, Columbia, MO



## Notes:

No Parking, under tree drip line  
No BBQs under tree drip line  
No Tents under tree drip line

Tent Location to be approved by Parks & Recreation staff by calling (573) 874-7201

Accessible Playground

Riechmann Pavilion

58 Regular Parking Spaces  
4 Accessible Parking Spaces

Event Access Drive

Temporary Parking for Event set up

Tent Area:  
Location of Tents to be determined with Parks & Recreation Staff Prior to set up by calling (573) 874-7201

● Park Amenity

□ Tent Set Up Area

1 inch = 78.44 feet

0 35 70 140 210 280 Feet



Updated: 10-19-2009 RJEP K:\PMC\GIS-Development\Park Plans