

# Smithton Park

3501 West Worley Street

12.2 acres

---

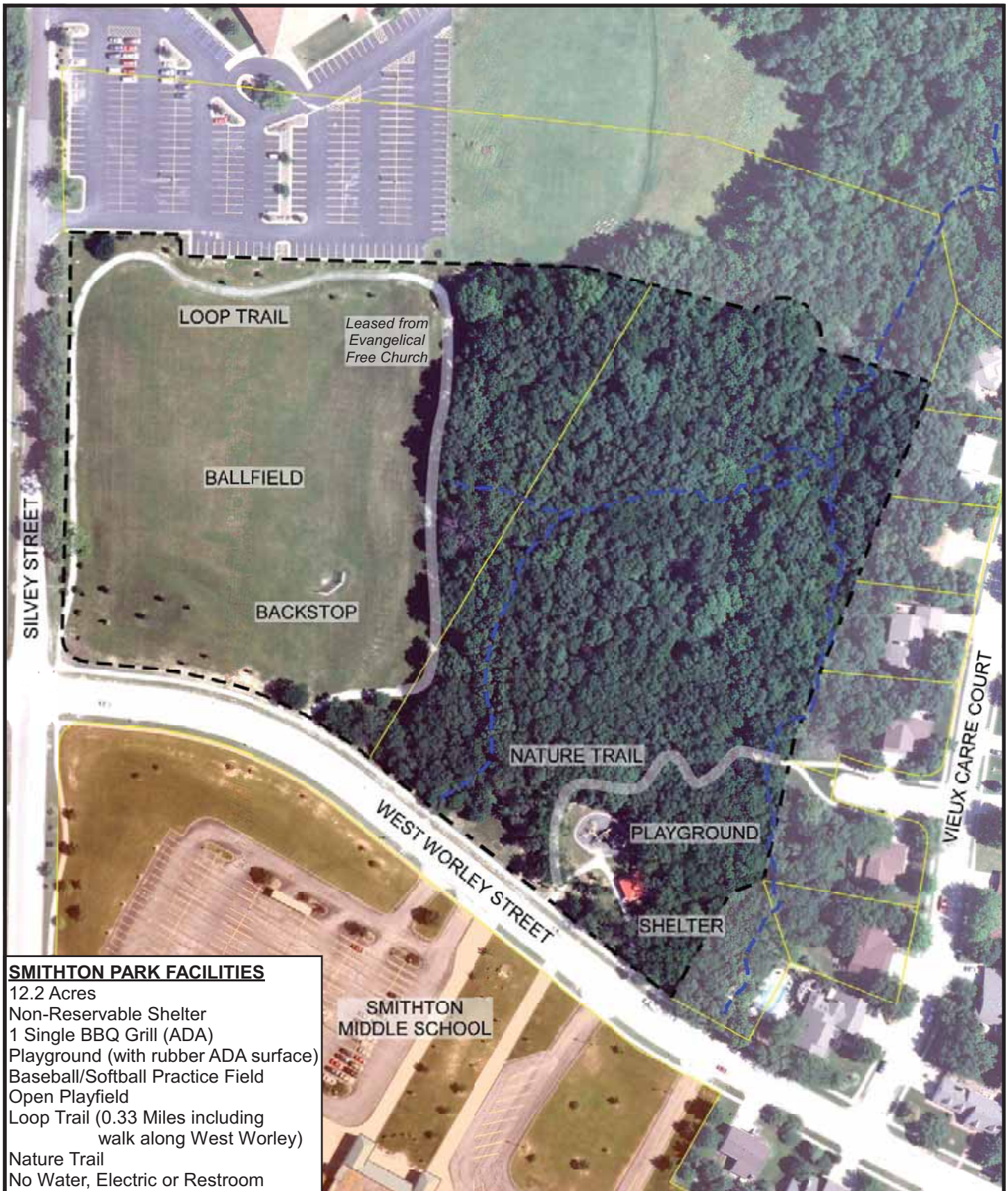


---

## Proposed Improvements

## Estimated Costs

Misc. park improvements (FAL)	\$15,000
Baseball backstop and field improvements (FAL)	\$10,000
Renovate medium playground	\$25,000
Renovate synthetic playground safety surface	\$25,000
Convert existing gravel trail to concrete (FAL)	\$23,000



# Smithton Park

3501 West Worley Street

