

# Proctor Park

411 Proctor Drive

4.8 acres

---



---

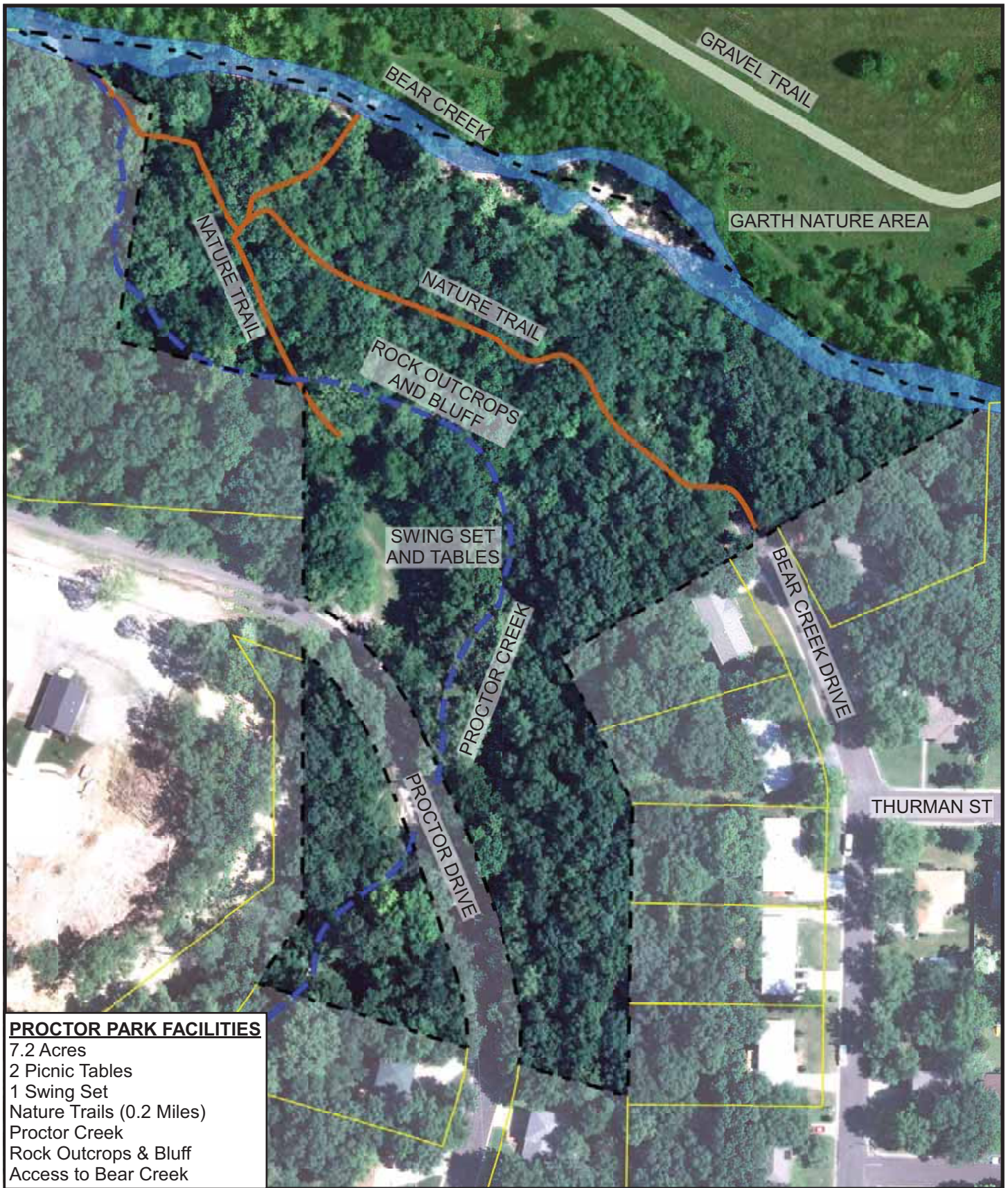
## Proposed Improvements

## Estimated Costs

---

Miscellaneous park improvements (FAL)	\$15,000
Construct small playground	\$25,000
Install synthetic playground safety surface	\$25,000
Construct small shelter	\$40,000





**PROCTOR PARK FACILITIES**

7.2 Acres  
2 Picnic Tables  
1 Swing Set  
Nature Trails (0.2 Miles)  
Proctor Creek  
Rock Outcrops & Bluff  
Access to Bear Creek

# Proctor Park

411 Proctor Drive



120' 60' 0' 60' 120'  
Parcel lines property of Boone County

