

Gans Creek Recreation Area

3360 E. Gans Road

320 acres

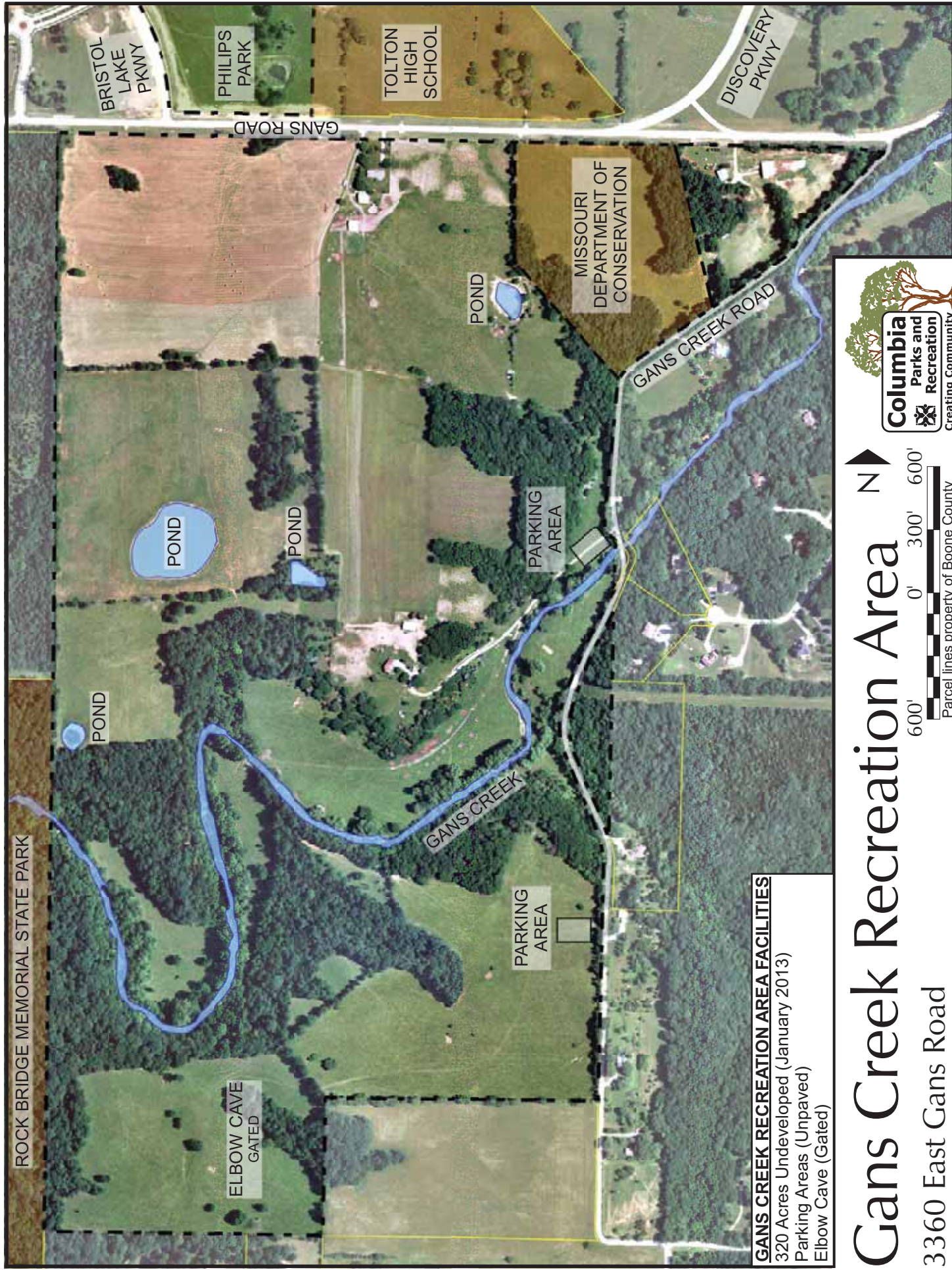


Proposed Improvements

Estimated Costs

(Phase I development scheduled BY 2013-2015)

Construct large shelter	\$125,000
Construct medium shelter	\$80,000
Construct two playgrounds	\$100,000
Install synthetic playground safety surface at two facilities	\$100,000
Construct two restrooms	\$300,000
Develop athletic fields	\$600,000
Construct concession/restroom	\$450,000
Develop creek buffer and natural preservation area	\$100,000
Develop natural open space area	\$100,000
Develop event open space	\$80,000
Develop dog park	\$110,000
Construct tennis/pickle ball courts	\$480,000
Equipment facility and material storage (FAL)	\$75,000
Construct cross country course (FAL)	\$25,000
Infrastructure (roads, parking, stormwater development, utilities, etc.)	\$3,016,000
Construct equipment facility and material storage buildings	\$800,000



ROCK BRIDGE MEMORIAL STATE PARK

BRISTOL
LAKE
PKWY

PHILIPS
PARK

TOLTON
HIGH
SCHOOL

DISCOVERY
PKWY

GANS ROAD

MISSOURI
DEPARTMENT OF
CONSERVATION

POND

GANS CREEK ROAD

POND

POND

PARKING
AREA

GANS CREEK

PARKING
AREA

ELBOW CAVE
GATED

GANS CREEK RECREATION AREA FACILITIES

320 Acres Undeveloped (January 2013)
Parking Areas (Unpaved)
Elbow Cave (Gated)



Gans Creek Recreation Area

3360 East Gans Road