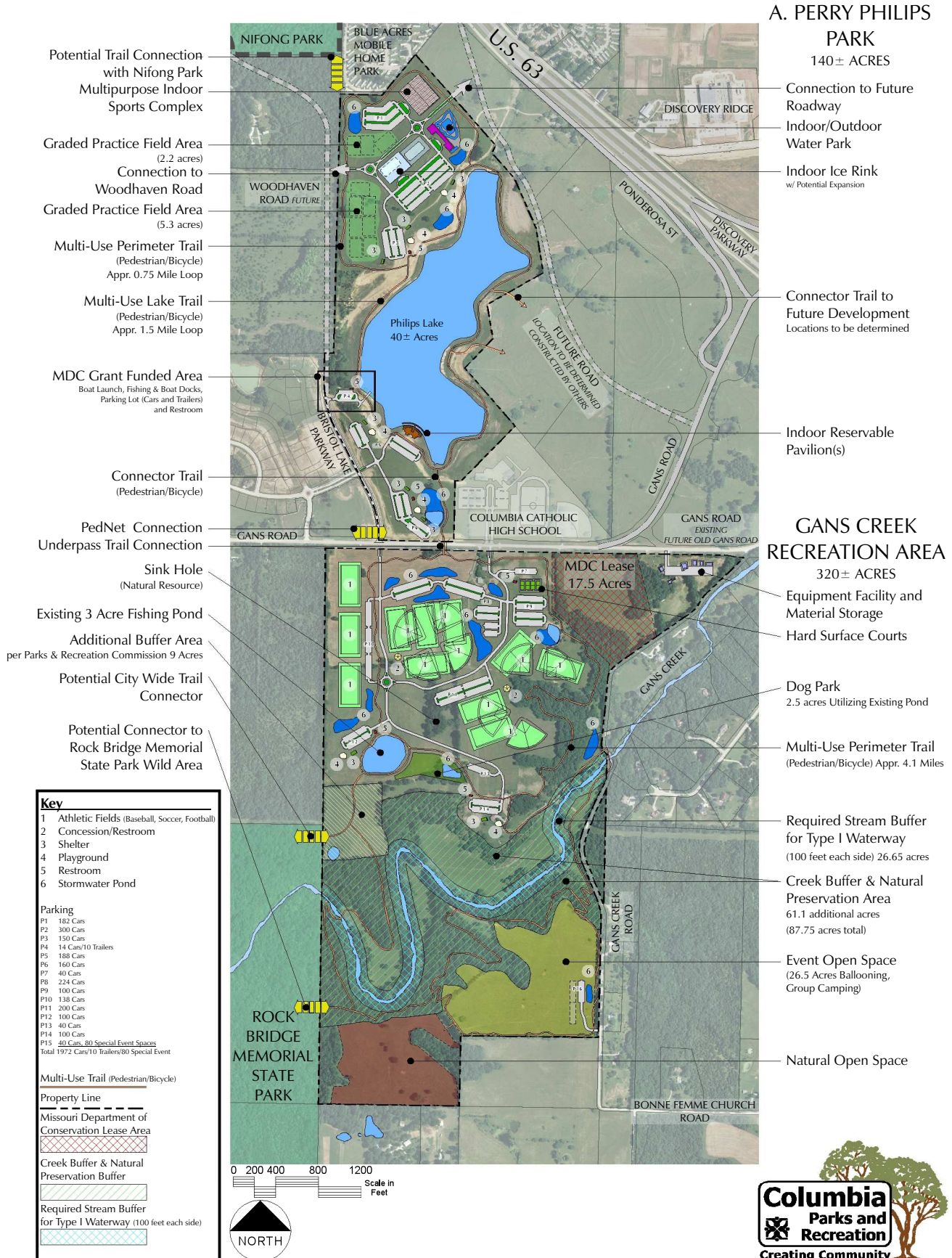


# 2010 Southeast Regional Park Master Plan

## A. Perry Philips Park & Gans Creek Recreation Area



Potential Trail Connection with Nifong Park  
Multipurpose Indoor Sports Complex

Graded Practice Field Area (2.2 acres)  
Connection to Woodhaven Road  
Graded Practice Field Area (5.3 acres)

Multi-Use Perimeter Trail (Pedestrian/Bicycle)  
Appr. 0.75 Mile Loop  
Multi-Use Lake Trail (Pedestrian/Bicycle)  
Appr. 1.5 Mile Loop

MDC Grant Funded Area  
Boat Launch, Fishing & Boat Docks, Parking Lot (Cars and Trailers) and Restroom

Connector Trail (Pedestrian/Bicycle)

PedNet Connection  
Underpass Trail Connection

Sink Hole (Natural Resource)

Existing 3 Acre Fishing Pond  
Additional Buffer Area per Parks & Recreation Commission 9 Acres

Potential City Wide Trail Connector

Potential Connector to Rock Bridge Memorial State Park Wild Area

**A. PERRY PHILIPS PARK**  
140± ACRES

Connection to Future Roadway  
Indoor/Outdoor Water Park

Indoor Ice Rink w/ Potential Expansion

Connector Trail to Future Development  
Locations to be determined

Indoor Reservable Pavilion(s)

**GANS CREEK RECREATION AREA**  
320± ACRES

Equipment Facility and Material Storage  
Hard Surface Courts

Dog Park  
2.5 acres Utilizing Existing Pond

Multi-Use Perimeter Trail (Pedestrian/Bicycle) Appr. 4.1 Miles

Required Stream Buffer for Type I Waterway (100 feet each side) 26.65 acres

Creek Buffer & Natural Preservation Area 61.1 additional acres (87.75 acres total)

Event Open Space (26.5 Acres Ballooning, Group Camping)

Natural Open Space