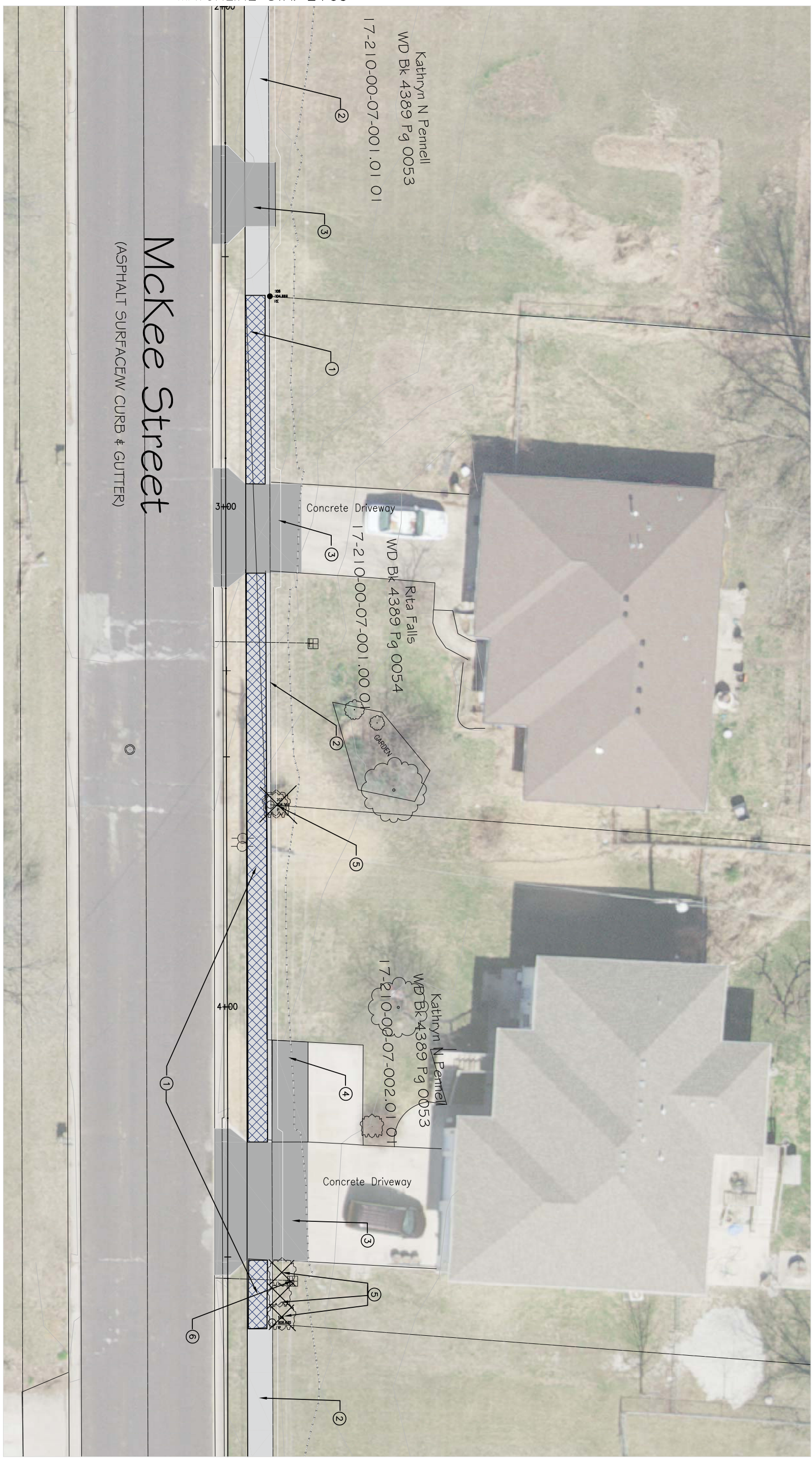


- ① REMOVE EXISTING 4' SIDEWALK
- ② CONSTRUCT 5' WIDE 4" THICK PCC SIDEWALK PER DETAIL 1
- ③ REMOVE AND RECONSTRUCT RESIDENTIAL DRIVEWAY PER DETAIL 3
- ④ REMOVE AND RECONSTRUCT CONCRETE PAD
- ⑤ REMOVE TREE/BUSHES/STUMP
- ⑥ ADJUST VALVE



MATCHLINE STA. 2+00

MATCHLINE STA. 4+90

No.	Date	By	Revision

MCKEE STREET SIDEWALK

Plan Sheet

City of Columbia, Missouri
 Department of Public Works

David Allen Nichols
 Registered Professional Engineer
 E-26782

File No. .
 Scale: 1" = 10'
 Date: MARCH 2019
 Des. E.M.F.
 Dwn. E.M.F.
 Ck. A.A.A.

Sheet
 2 of 6