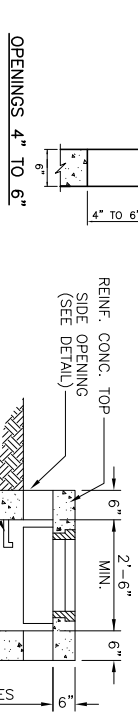
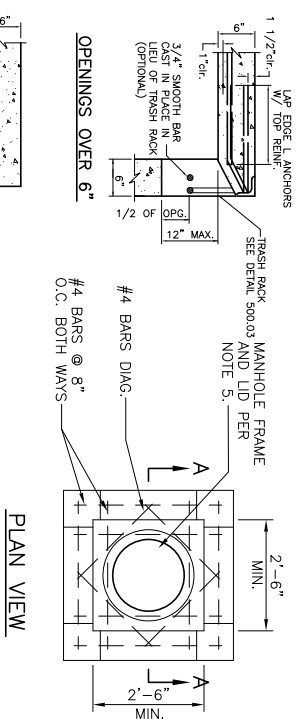


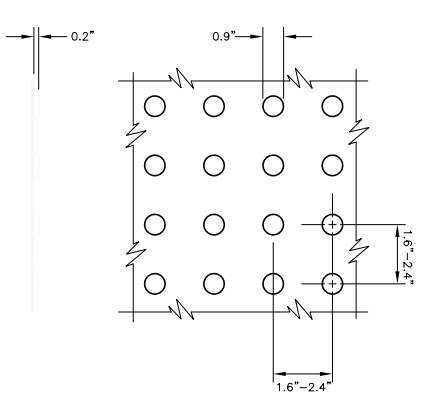
NOTE:
 1. SIDEWALK SHALL BE 4" THICK CLASS A CONCRETE.
 2. INSTALL 1/2" EXPANSION JOINTS AT INTERSECTIONS, RAMPS, STRUCTURES, DRIVEWAY APPROACHES, OR EVERY 150'.
 3. INSTALL TRANSVERSE SAW JOINTS AT SPACING EQUAL TO SIDEWALK WIDTH.
 4. STANDARD SIDEWALK PLACEMENT IS 12" FROM RIGHT OF WAY LINE.
 5. NO STEEL TO BE PLACED THROUGH EXPANSION JOINT.
 6. SIDEWALK CROSS SLOPE SHALL NOT EXCEED 2.00%.

DETAIL 1: SIDEWALK WITH GRASS PARKWAY
 (NOT TO SCALE)



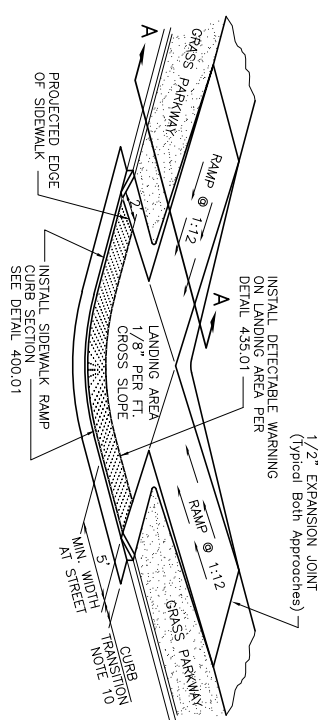
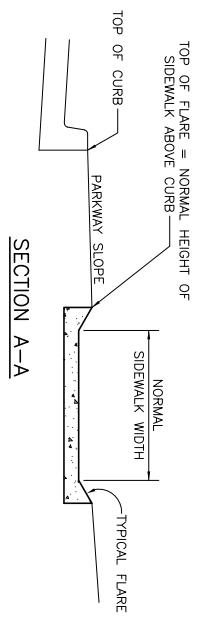
NOTE:
 1. CONCRETE SHALL BE CLASS E FOR BASES AND D FOR WALLS AND TOP.
 2. REINFORCING STEEL SHALL BE GRADE 60
 3. INSTALL WEEP HOLES AS PER DETAIL 500.04
 4. STRUCTURES WHERE H>8" SHALL BE REINFORCED CONCRETE (#4 BARS AT 12" CTRS. BOTH WAYS AND #4 BARS DIAGONAL AT PIPE OPENINGS)
 5. FRAME AND LID SHALL BE NENAH R-1960-A (TYPE C LID), DETTER 1180, OR APPROVED EQUAL. SEE DETAIL 500.01 FOR PLACEMENT.
 6. SIDE OPENINGS TO BE ON ALL FOUR SIDES UNLESS NOTED OTHERWISE
 7. INSTALL TRASH RACK ON OPENINGS OVER 6" SEE DETAIL 500.03

DETAIL 4: SIDE OPENING INLET
 (NOT TO SCALE)



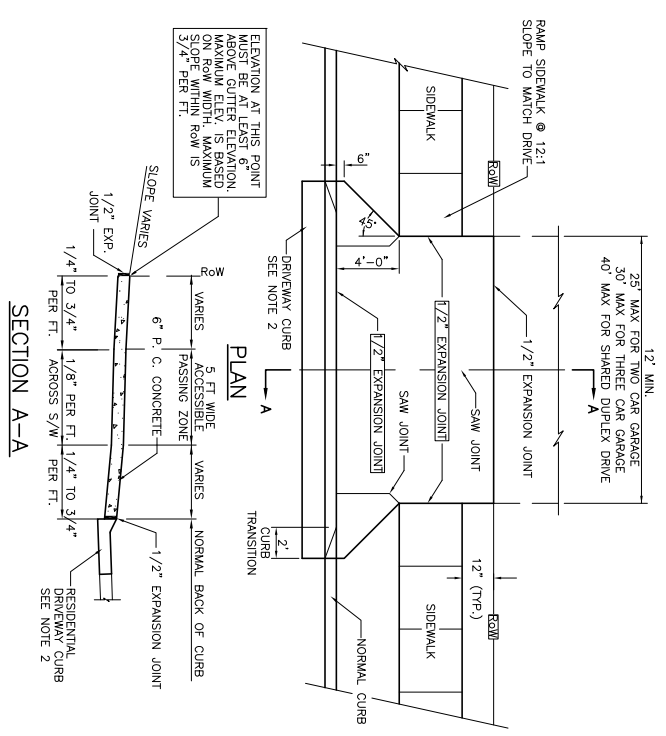
NOTE:
 1. DETECTABLE WARNING SHALL CONSIST OF RAISED TPO-COATED DOMES WITH DIAMETER OF 0.97' A HEIGHT OF NOMINAL 1.0" AND A CENTER-TO-CENTER SPACING OF NOMINAL 2.35'. AND SHALL CONTRAST VISUALLY WITH ADJACENT SURFACES, ACHIEVED BY THE INSTALLATION OF ADA SOLUTIONS 2438 REFR. 2448 REFR. OR 2458 REFR. (OR APPROVED EQUAL) AND SHALL BE AN INTERLOCK PART OF THE WALKING SURFACE.
 2. ADA SOLUTIONS 2448 REFR. OR APPROVED EQUAL TO BE USED WITH DETAIL 435.021, 435.022, AND 1050.036.
 3. STAMPED CONCRETE IS NOT AN APPROVED EQUAL.
 4. DOWNHOLE DETECTABLE WARNINGS MAY BE ADA 2004 COMPLIANT DETECTABLE WARNING PAVERS.
 5. DETECTABLE WARNING PLAYS ARE TO BE COLORED OR BRICK RED IN COLOR OR APPROVED EQUAL.
 6. DETECTABLE WARNING SURFACES SHALL BE 24" WIDE AND EXTEND THE FULL LENGTH OF THE PUBLIC USE AREA.

DETAIL 2: SIDEWALK RAMP WITH GRASS PARKWAY
 (NOT TO SCALE)



NOTE:
 1. RAMP AND LANDING SHALL BE 6" THICK CLASS A CONCRETE WITH #4 BARS AT 12" O.C. E.W.
 2. EXPANSION JOINT SHALL BE 1/2" PREFORMED CORK OR BITUMINOUS EXPANSION JOINT MATERIAL.
 3. MAXIMUM RAMP CROSS SLOPE IS 2.00%.
 4. ALL SLOPES ARE MEASURED FROM THE HORIZONTAL.
 5. REPLACE STANDARD CURB SECTION WITH SIDEWALK RAMP CURB SECTION - DETAIL 400.01
 6. RAMP LENGTH IS DEPENDENT ON 1:12 MAX. SLOPE. USE FLATTER WHEN POSSIBLE.
 7. LANDING AREA SHALL BE 4'-0" MIN WIDTH. CROSS SLOPE OF LANDING SHALL NOT EXCEED 2.00%.
 8. USE TYPE "B" RAMP ONLY IF TYPE "A" IS NOT FEASIBLE.
 9. FLARES ARE REQUIRED AT RAMPS TO KEEP GRASS PARKWAY SLOPES IN CONFORMANCE WITH THE TYPICAL CROSS SECTION. (SEE SECTION A-A)
 10. CURB TRANSITION LENGTH IS DEPENDENT ON FLARE SLOPE

DETAIL 5: SIDEWALK RAMP WITH GRASS PARKWAY
 (NOT TO SCALE)



DETAIL 3: RESIDENTIAL DRIVEWAY
 (NOT TO SCALE)

No.	Date	By	Revision

City of Columbia, Missouri
 Department of Public Works

MCKEE STREET SIDEWALK
 Detail Sheet

David Allen Nichols Registered Professional Engineer E-267612
Scale: .
Date: MARCH 2019
Des. E.M.F.
Dwn. E.M.F.
Chk. A.A.A.
Sheet 1 of 2