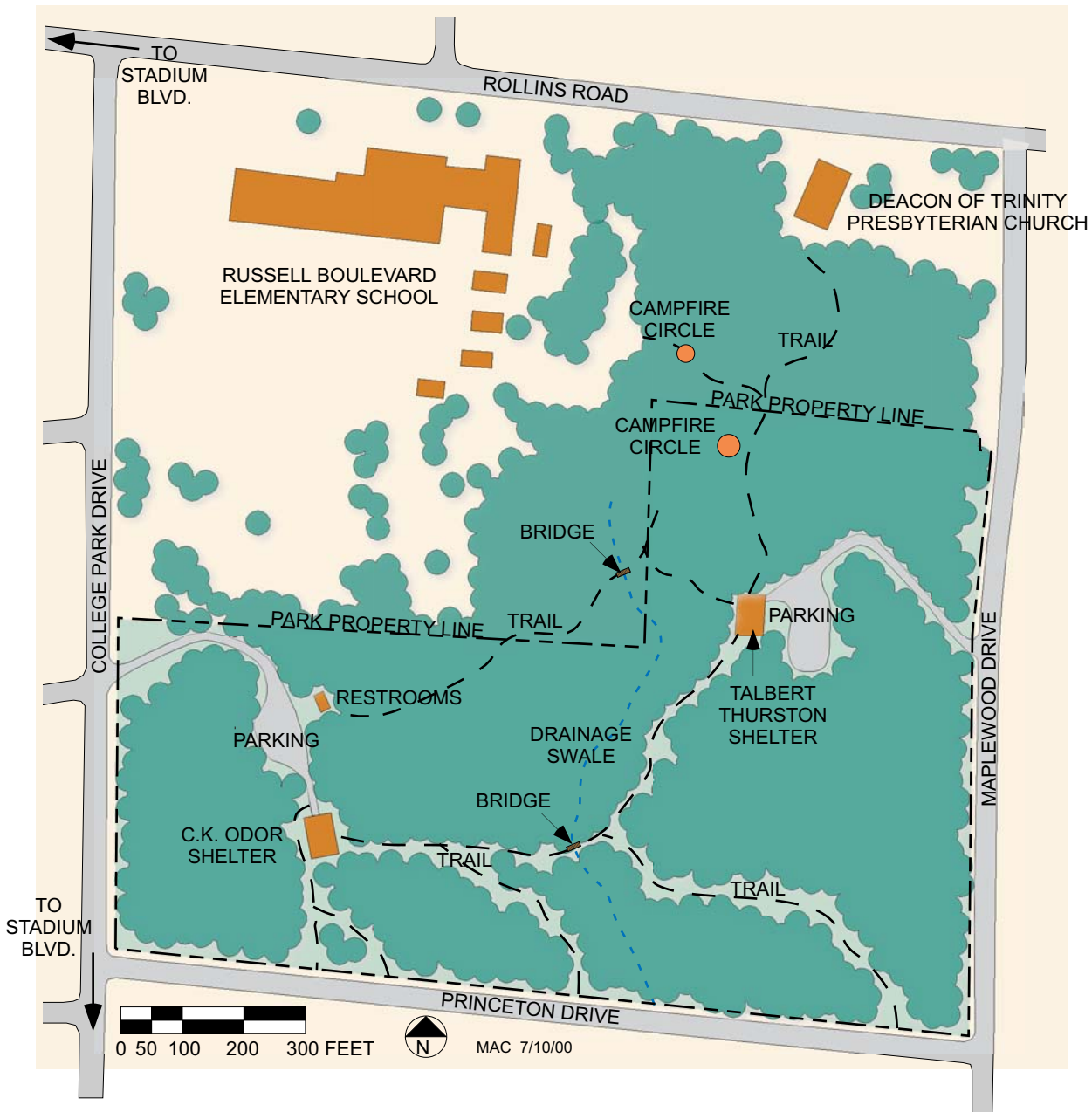


KIWANIS PARK

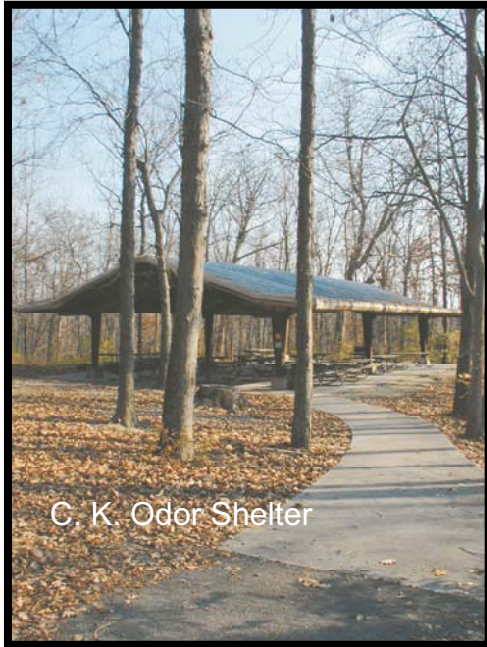
Proposed Improvements

Estimated Cost

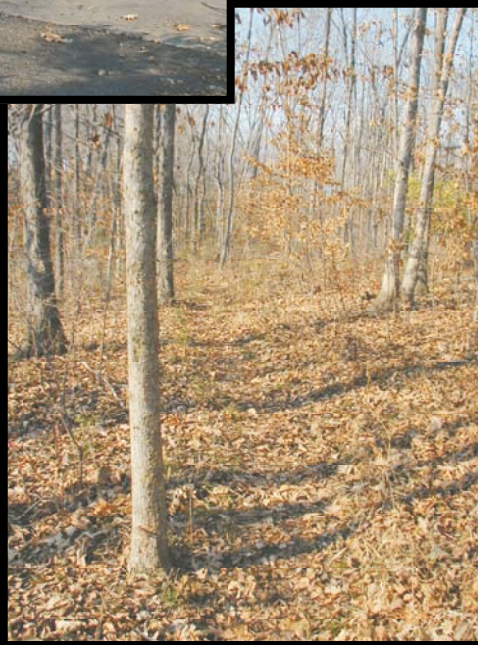
● Renovate medium shelter (College Park)	\$35,000
● Renovate medium shelter (Maplewood)	\$35,000
● Replace restrooms (College Park Dr.)	\$115,000
● <u>Install new playground equipment</u>	<u>\$15,000</u>
● Total	\$200,000



KIWANIS PARK



C. K. Odor Shelter



Talbert-Thurston Shelter

AMENITIES:

- 2 Reservable Shelters
 - Talbert-Thurston (Maplewood Dr.)
Dimensions: 60' x 40'
12- Picnic tables
Lights
4- 110 volt double outlets
1- 220 volt outlet
No water
Restrooms at other shelter
1- Standard double BBQ grill
 - C.K. Odor (College Park Dr.)
Dimensions: 60' x 40'
12- Picnic tables
1- ADA picnic table
Lights
3- 110 volt double outlets
1- 220 volt outlet
1- Standard drinking fountain
Restrooms
2- Standard double grills
- Basketball Court (at school)
- Nature Area
- Nature Trail (.33 mile)
- Playground (at school)

LOCATION AND SIZE:

- 926 College Park Dr.
1001 Maplewood Dr.
- 20 Acres