

# Parks & Recreation Commission Meeting

September 18, 2008





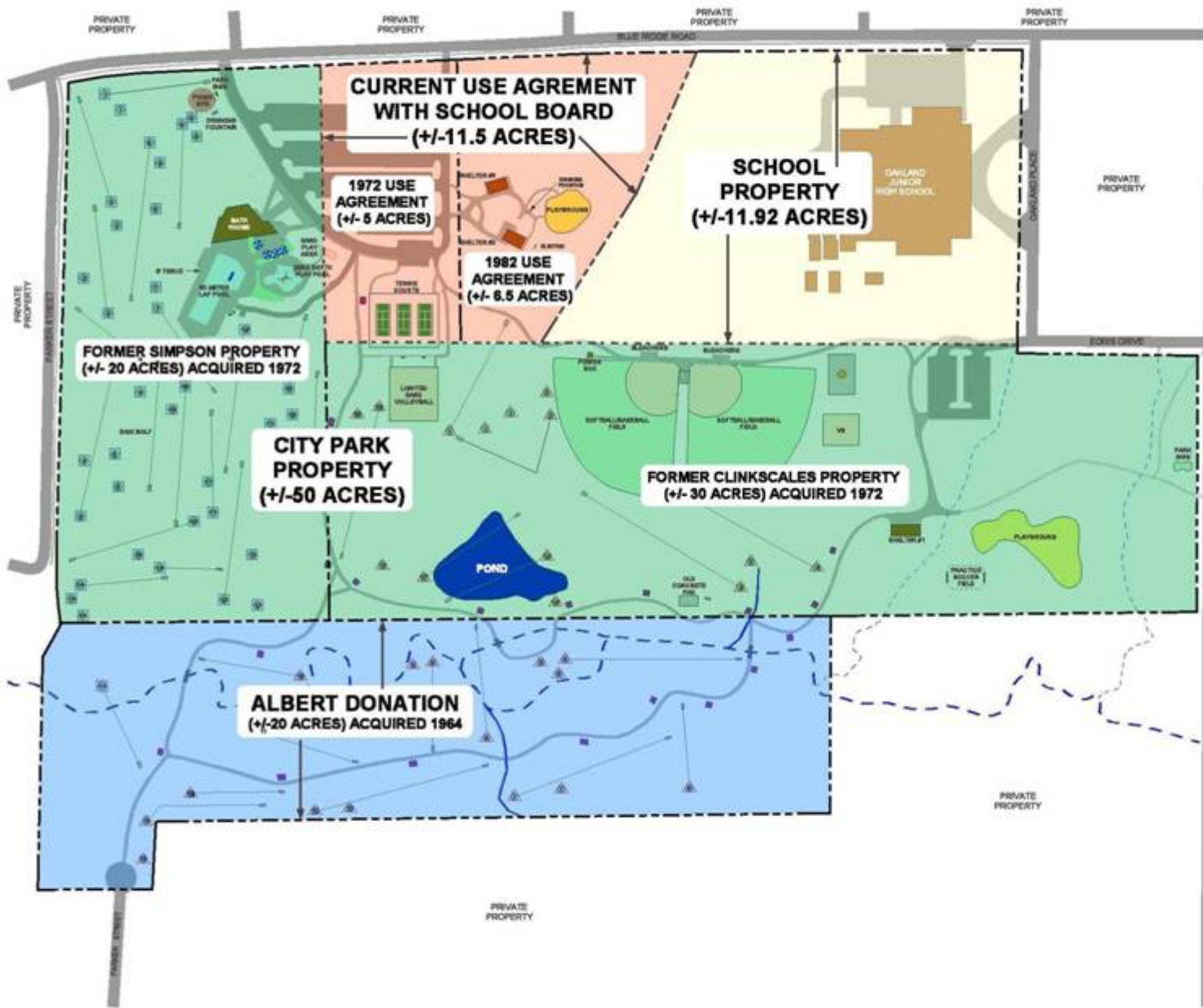
# Agenda –September 18, 2008

1. Approval of Agenda Action
2. Approval of Minutes from August Action
3. Approval of August Monthly Report Action
4. Naming of Oakland/Albert-Oakland Park Action
5. Budget Update
6. October Commission Meeting Date
7. Council Items
8. Capital Project Update
9. Commission Comments
10. Staff Comments
11. Public Comments



## **4. Naming of Oakland / Albert-Oakland Park**





- OAKLAND PARK FACILITIES**
- 81.5 ACRES
- 3 - RESERVABLE SHELTERS
  - 30 - PICNIC TABLES (3 - ADA)
  - 2 - DRINKING FOUNTAINS
  - LIGHTS
  - 11 - ELECTRICAL OUTLETS
  - 3 - DOUBLE BBQ GRILLS
  - RESTROOMS AT SHELTER #1 AND POOL HOUSE
- OAKLAND FAMILY AQUATIC CENTER
- MULTI-PURPOSE HARD SURFACE TRAIL
- CREEK AND NATURAL AREA
- 2 - PLAYGROUNDS
  - 36 HOLE DISC GOLF COURSE
  - 3 - LIGHTED TENNIS COURTS
  - 2 - LIGHTED SAND VOLLEYBALL COURTS
  - 1 - SMALL PRACTICE SOCCER FIELD
  - 1 - FOOTBALL FIELD (AT SCHOOL)
  - 1 - BASKETBALL COURT
  - 2 - BASEBALL/SOFTBALL FIELDS

- KEY**
- BASKETBALL COURT
  - BRIDGE
  - CREEK/DRAINAGE SWALE
  - DISC GOLF COURSE-A BASKETS
  - DISC GOLF COURSE-B BASKETS
  - FENCE - 6' TALL
  - FITNESS TRAIL STATION
  - GRAVEL PATH
  - PARKING ROAD
  - PROPERTY LINE
  - SAND VOLLEYBALL COURT
  - SIDEWALK
  - SHELTER/BATH HOUSE





**CITY OF COLUMBIA, MO**  
PARKS AND RECREATION

---

DATE:  REVISION:

DESIGN BY: MELANIE LONG DATE: 11-29-89 SCALE: AS NOTED

---

NOTE:

TITLE: **ALBERT - OAKLAND PARK**  
1900 BLUE RIDGE ROAD

1  
1



## **7. Council Items**

- **Heibel March Building**
- **County House Branch Trail**





NOTABLE  
2005  
HISTORIC PROPERTY  
COLUMBIA HISTORIC  
PRESERVATION COMMISSION


FEAR  
NO  
ART

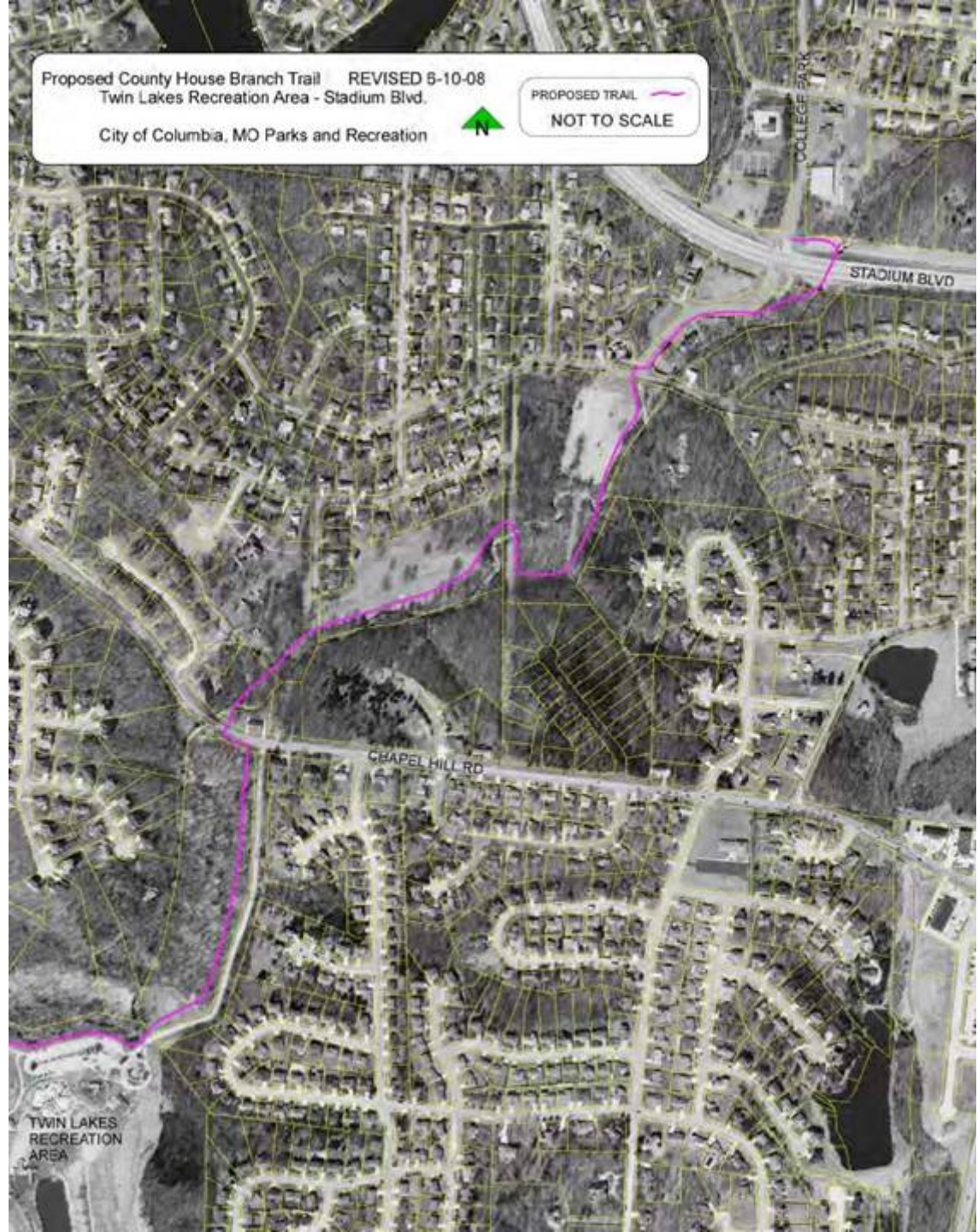




Proposed County House Branch Trail REVISÉ 6-10-08  
Twin Lakes Recreation Area - Stadium Blvd.  
City of Columbia, MO Parks and Recreation



PROPOSED TRAIL   
NOT TO SCALE



TWIN LAKES  
RECREATION  
AREA

STADIUM BLVD

CHAPEL HILL RD

COLLEGE PARK



# 8. Capital Project Update



# Parks Management Center Repair of Hail Damaged Roof



# Garth Nature Area Parking Addition





# Cosmo Bethel Park 4-Court Tennis Addition



# Cosmo Bethel Park Large Shelter







# Stephens Lake Park Waterfall Construction



# Stephens Lake Park Waterfall Construction





# Antimi Black & Gold Fields Irrigation System Installed



# Antimi Softball Complex Scorer's Table

Eagle Scout Project  
of John Morrison





# Auburn Hills Park

ADA Walkway, Re-seeded Open Areas, Trail Preparation



# Auburn Hills Park - Playground





# Atkins Park Ballfield Utility Building



# Atkins Ballfield Complex Gold Field Scoreboard





# Atkins Ballfield Complex Player Benches





# Valleyview Park Trail Improvements





# MKT Restrooms - Scott & Forum Completed



# PMC Improvements Greenhouse Addition





# PMC Improvements Parking Expansion



# Stephens Lake Park Shoreline Maintenance

C.A.R.P Volunteer Project 8/23/08



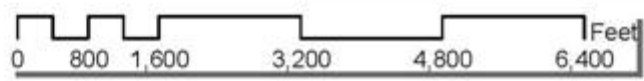
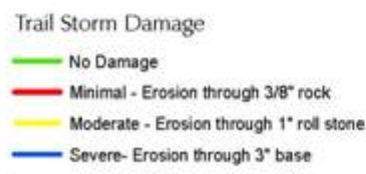




# Flooding - Trail Damage



# MKT Trail Storm Damage Assessment 9-16-2008





# MKT Scott Blvd. Parking Lot

(Photo taken Monday, 9/15)



# MKT Scott Blvd. Parking Lot

(Photo taken Monday, 9/15)





# MKT Scott Blvd. Water Level





# MKT Scott Blvd. Water Level





# MKT Trail





# MKT Trail



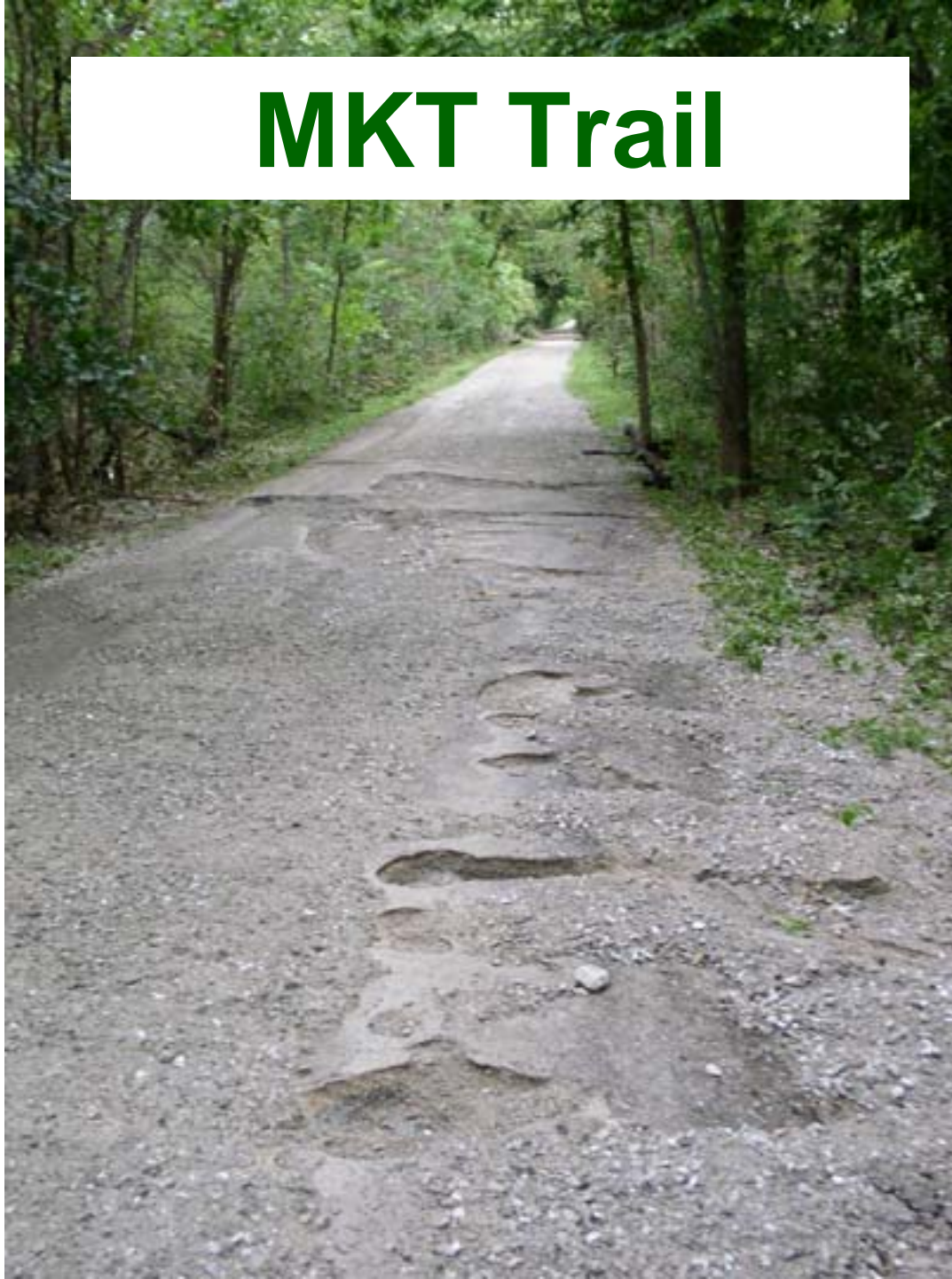


# MKT Trail





# MKT Trail





# MKT Trail





# MKT Trail





# MKT Trail





# MKT Trail





# MKT Trail

Stewart - Boulder Washout





# MKT Trail

Providence Box - Boulder





CLEARANCE 7' 4"

# MKT Trail

## Stadium Box





# Forum Nature Area





# Forum Nature Area



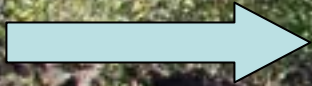


# Forum Nature Area





# Forum Nature Area Water Level





# Forum Nature Area

## Water Level





# MKT Trail

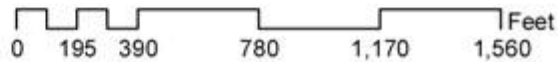
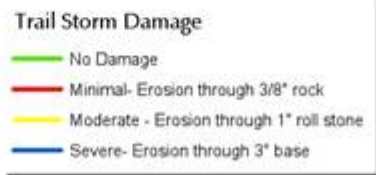
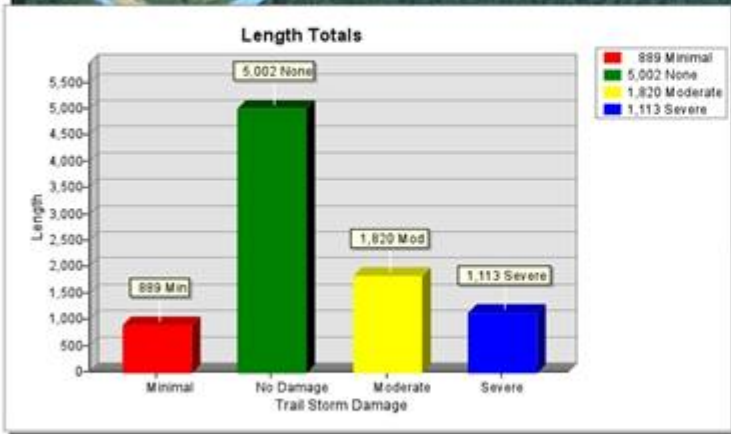
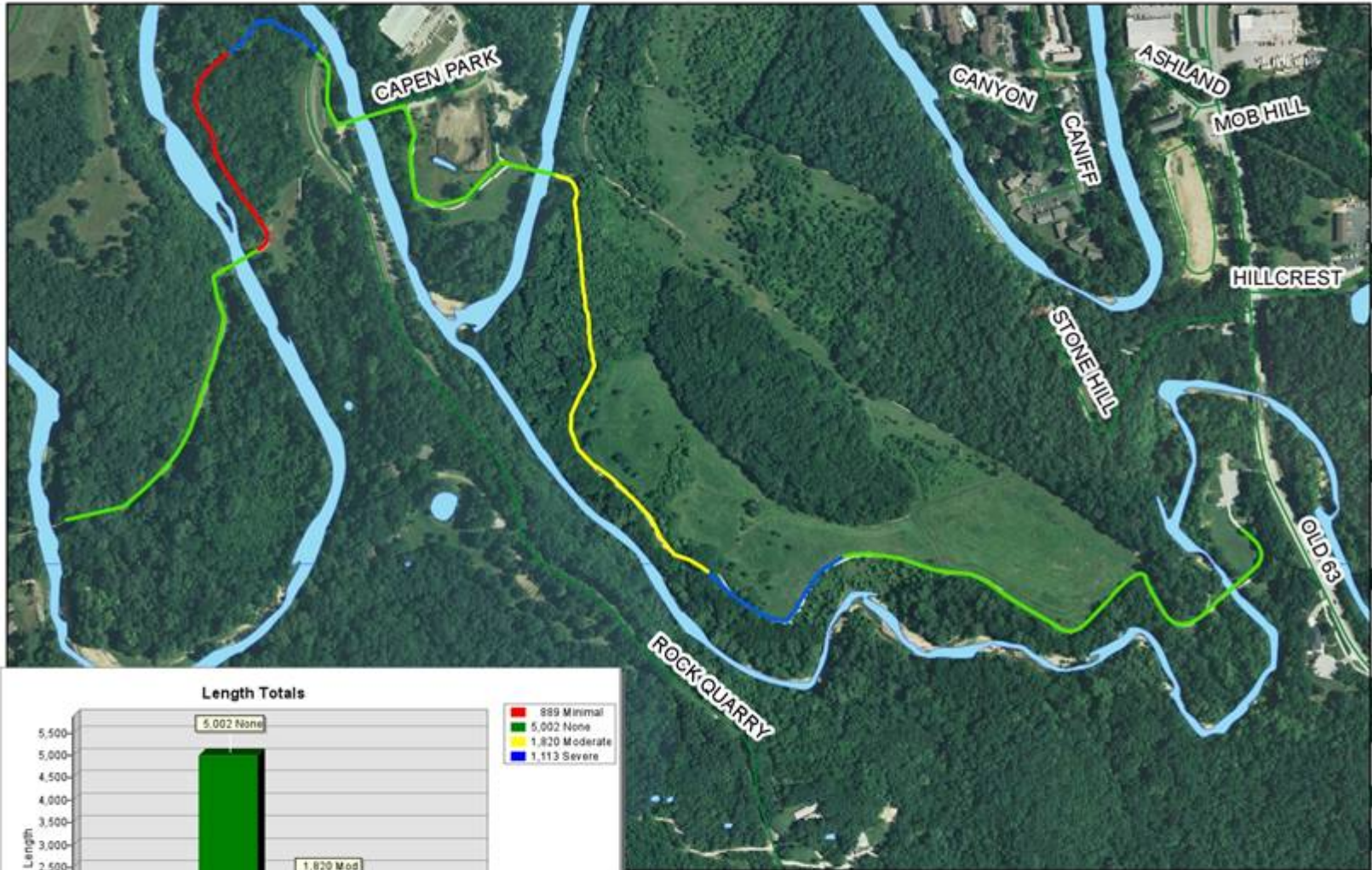
## Contractor Grading

Park staff is working with contractor - hauling rock and rolling






# Hinkson Creek Trail Storm Damage Assessment 9-16-2008





# Hinkson Creek Trail

## Trees Down Along Trail

A photograph of a dirt trail in a wooded area. The trail is blocked by a large pile of fallen trees and branches. The trees are mostly green, suggesting a summer or early autumn setting. The ground is covered in dirt and fallen leaves. The background is filled with dense foliage and trees.

12 trees down in this area; about 20 total down along City's trail portion





Trail



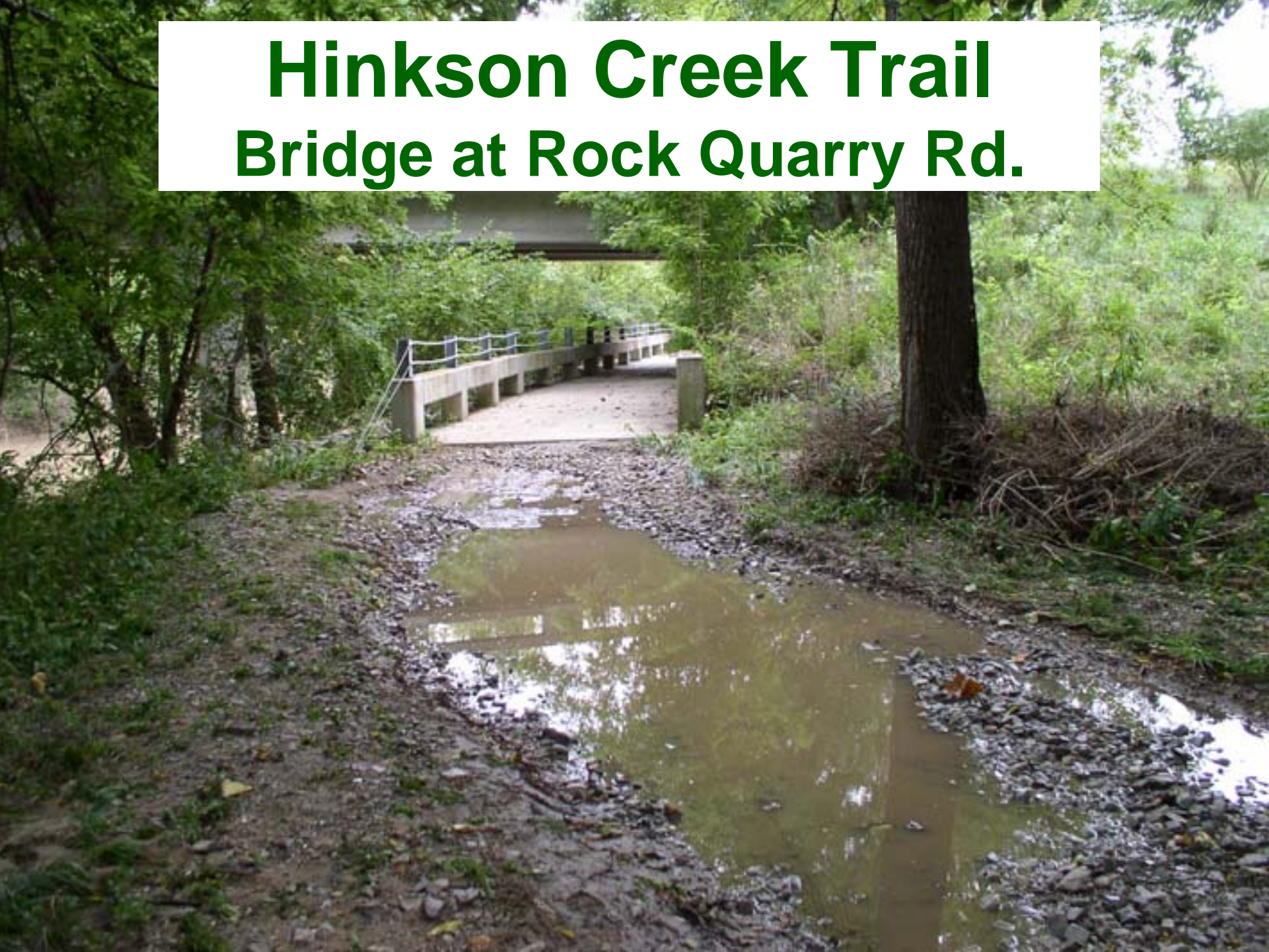
# Hinkson Creek Trail

Trees Down Along Trail



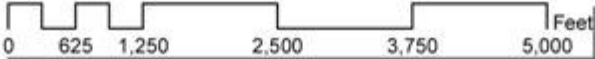
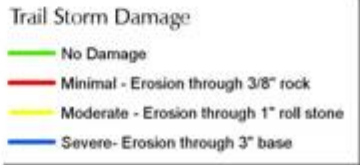
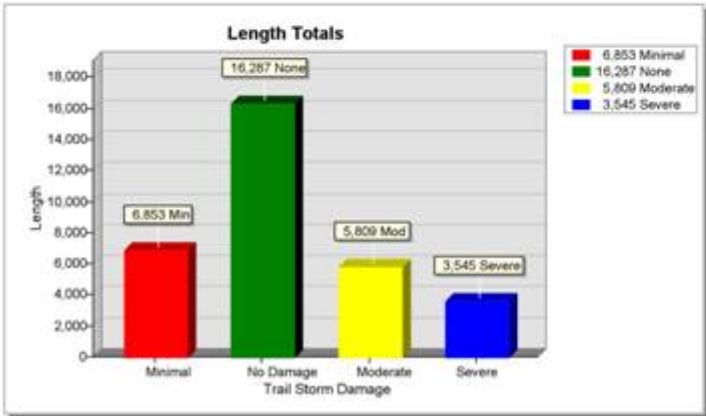
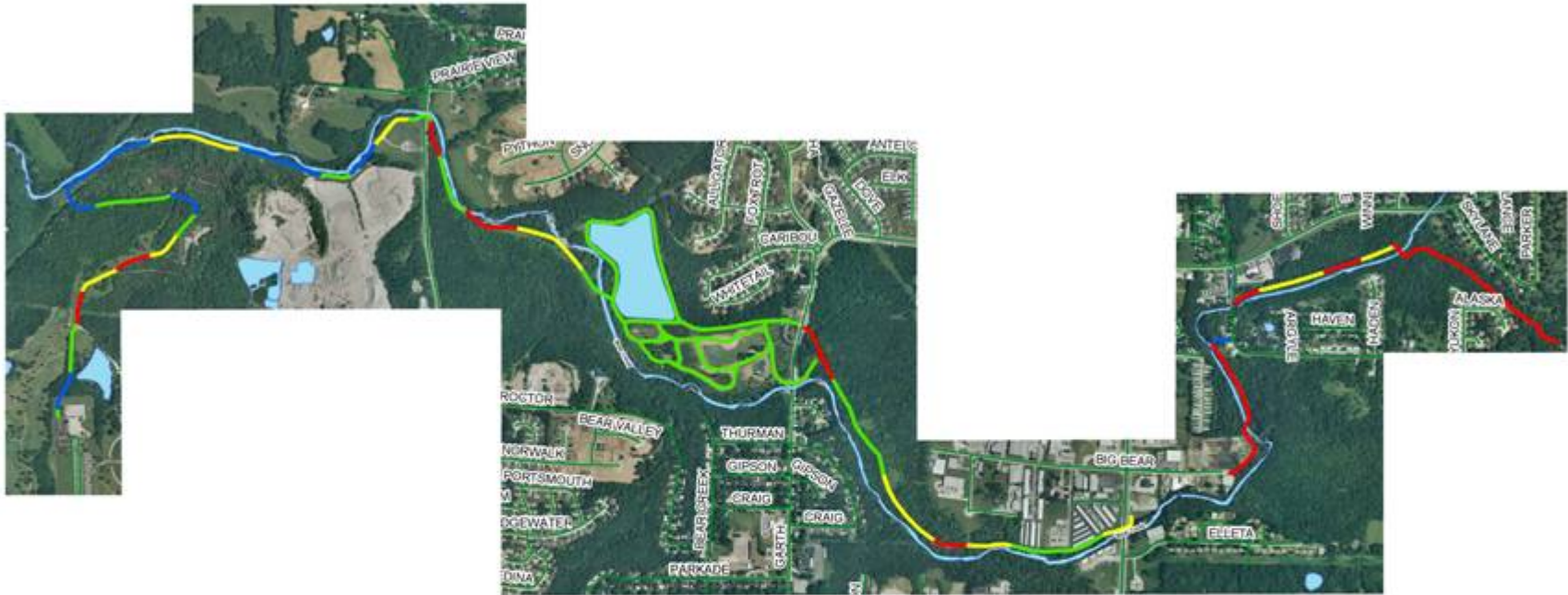


# Hinkson Creek Trail Bridge at Rock Quarry Rd.





# Bear Creek Trail Storm Damage Assessment 9-16-2008





# Bear Creek Trail

## Trees Down Along Trail





# Bear Creek Trees Down





# **Bear Creek Trail**

## **Creasy Springs Underpass**





# Bear Creek Trail



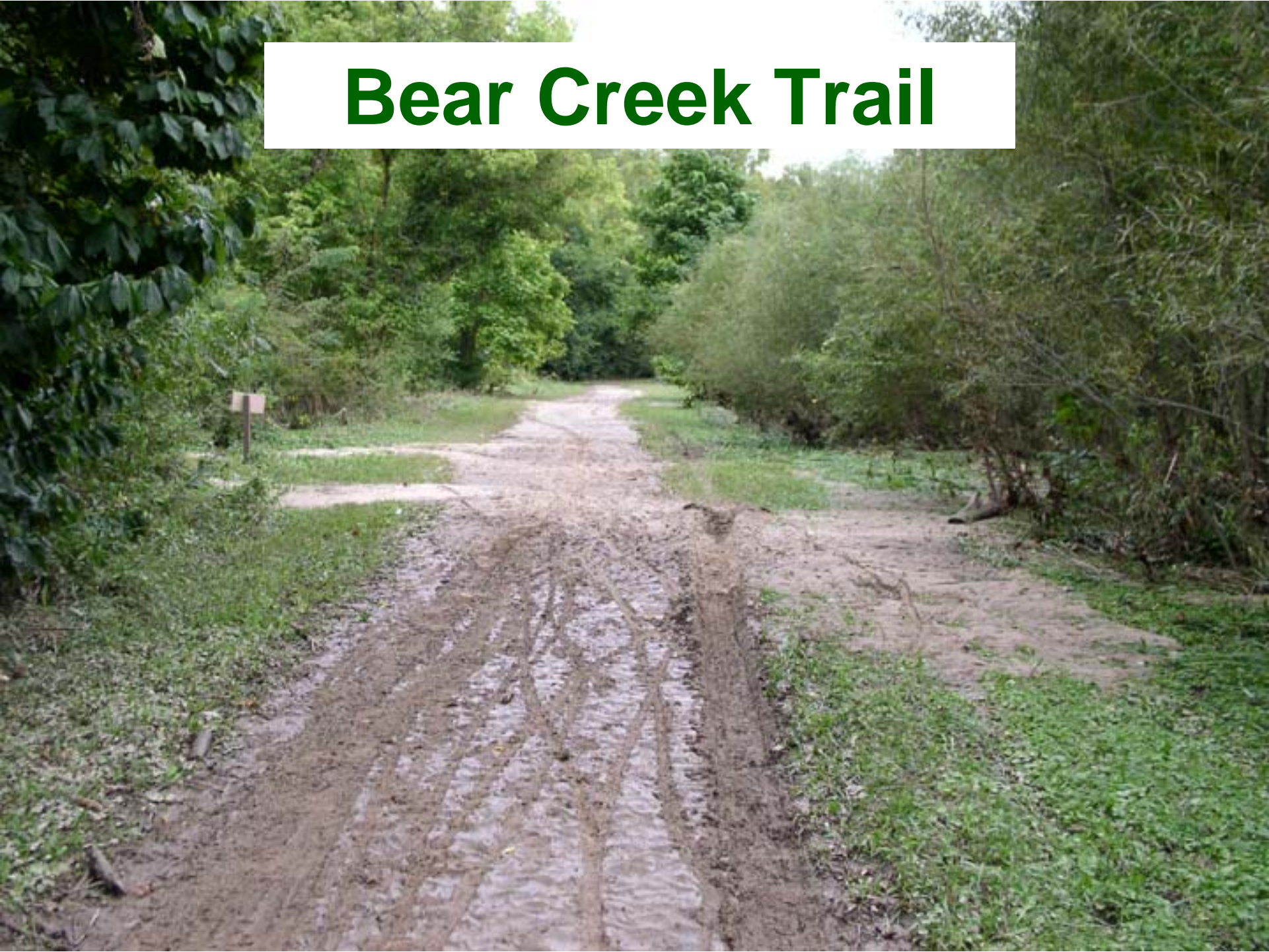


# Bear Creek Trail





# Bear Creek Trail



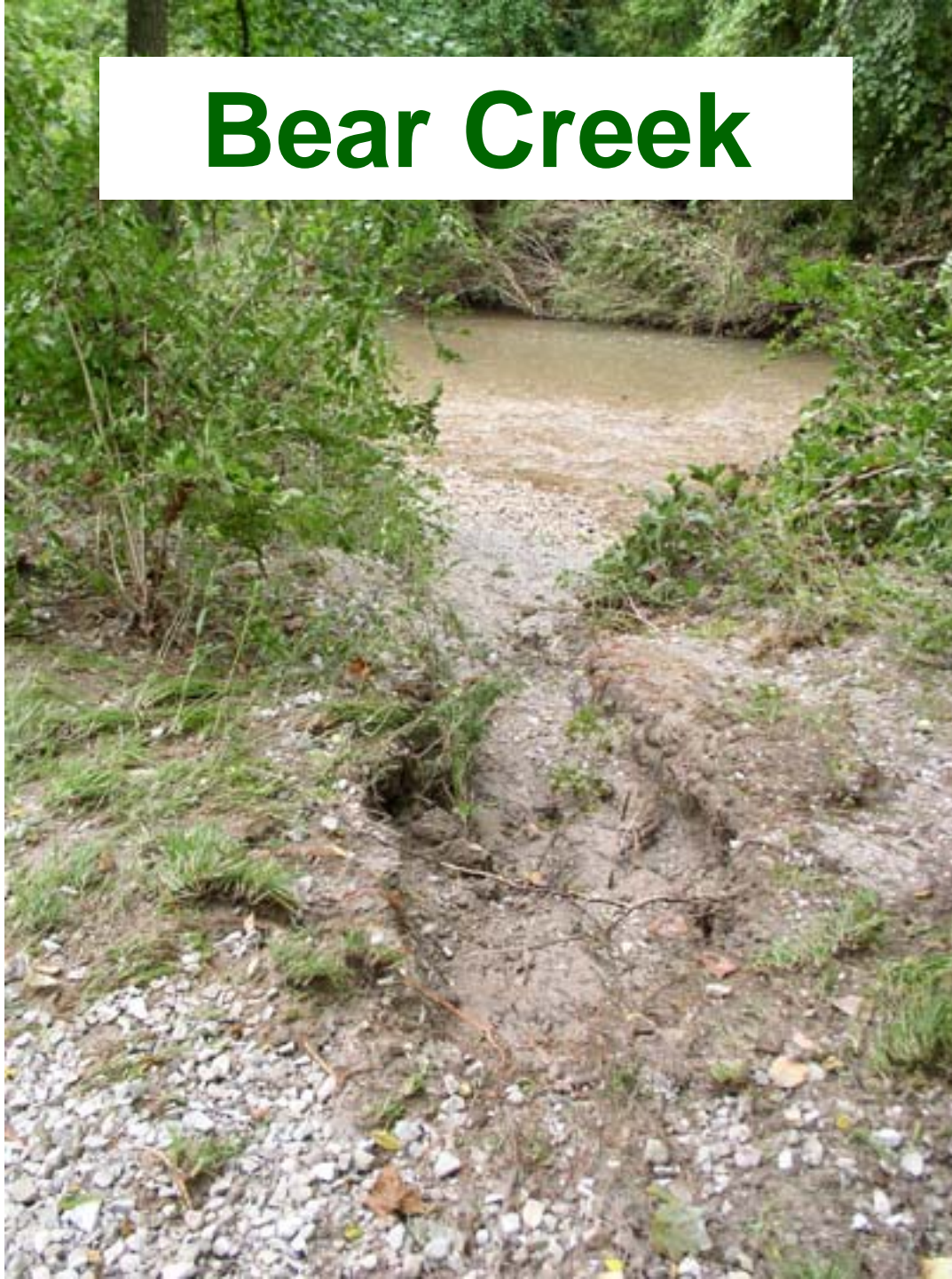


# Bear Creek Trail





# Bear Creek

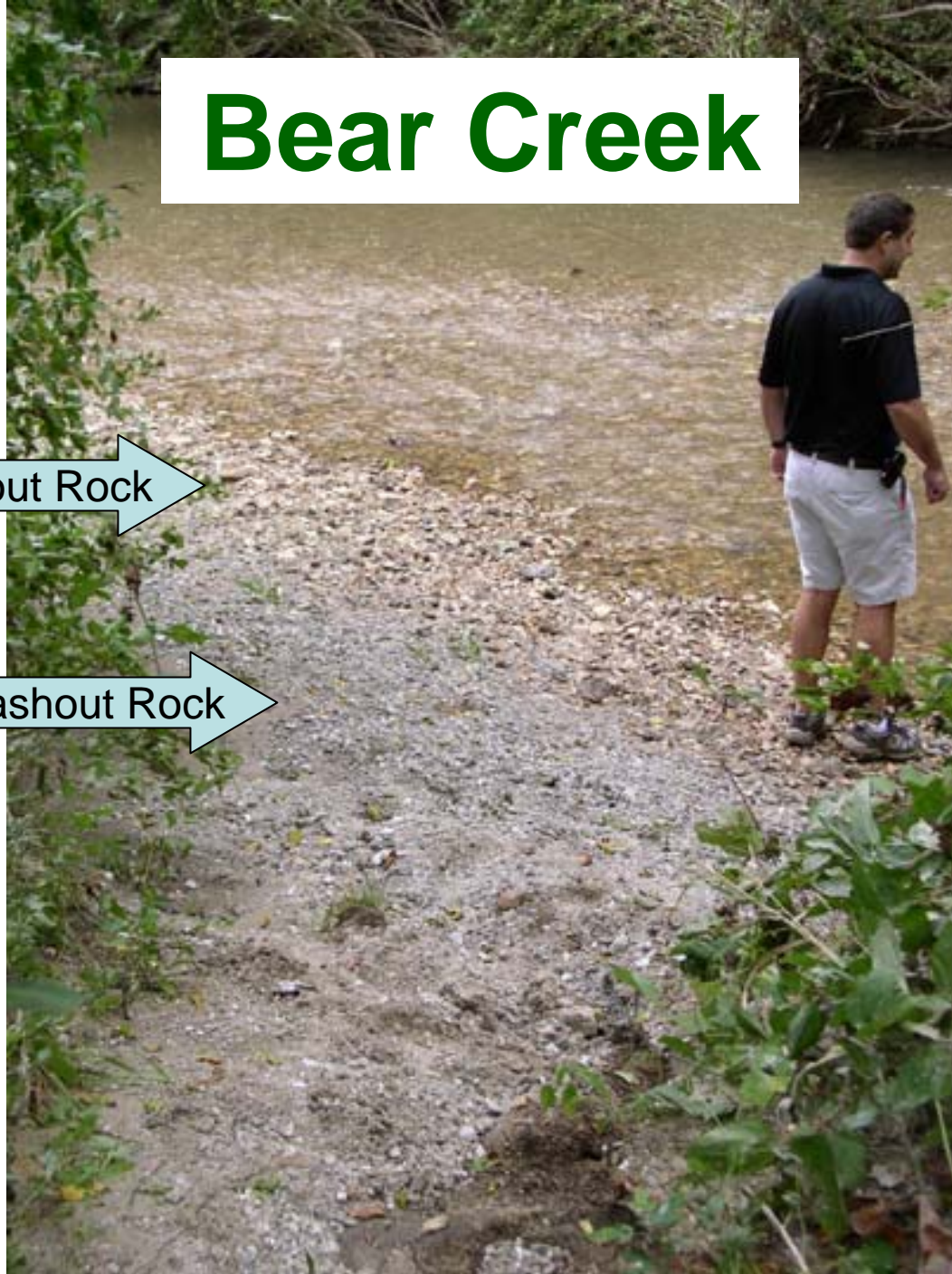




# Bear Creek

Washout Rock

Washout Rock





# Bear Creek

Washout Rock

Washout Rock





# Park Staff Clearing Mud off Bear Creek Trail







# Compliment for Trail Repair Work

>>> "Kimberly M. in an email 9/16/2008 9:11 AM >>>

Just a short note to compliment the parks and recreation department for an EXCELLENT job restoring the MKT trail. I ride my bike to work at least twice a week along the MKT trail from Scott Road to Boone Hospital. Had I NOT ridden Monday, September 15th (dodging trees and trying not to fall into potholes) I would not have appreciated what a terrific job they did repairing the damage! I was prepared for the worst this morning, but had a terrific ride!!! Keep up the great work! -- Kim M





**9. Commission Comments**

**10. Staff Comments**

**11. Public Comments**



# Adjourned

A scenic view of a park with a pond, trees, and a gazebo. The image shows a calm body of water in the foreground, reflecting the surrounding landscape. In the middle ground, there is a grassy area with several trees, some of which have vibrant autumn foliage in shades of orange, yellow, and red. A white gazebo with a blue roof is visible in the background, situated on a slight rise. The sky is clear and blue.

Creating Community through People, Parks and Programs