

# Parks & Recreation Commission Meeting

March 20, 2008





# Agenda – March 20, 2008

1. Approval of Agenda Action
2. Approval of Minutes from February Action
3. Approval of February Monthly Report Action
4. Rezoning – SOCH Request,  
Berrywood Drive Action
5. Get About Columbia Trail Guidelines
6. Commissions and Boards Questionnaire
7. Parks & Recreation Department Branding/Marketing
8. Council Items
9. Capital Project Update
10. Commission Comments
11. Staff Comments
12. Public Comments



## 4. Rezoning – Silver Oak Senior Living

- Site is 11.24 acres
- Rezone from R-1 to C-P.
- Located north of Woodridge Park (6.12 acres)
- Existing Topo: North half of site, drains toward I-70, south half to Woodridge Park.
- Heavily covered with trees and brush.  
Development plans indicate keeping 25%.
- Senior living community may change nature of future park amenities in Woodridge.



US HIGHWAY 63

INTERSTATE 70

Keene Street

Portland

Lansing

Dene

Berrywood

Arbor

C-3

C-3

C-3

C-1

O-1

O-1

O-1

O-1

O-1

SILVER OAK SITE  
11.24 ACRES

R-1

R-1

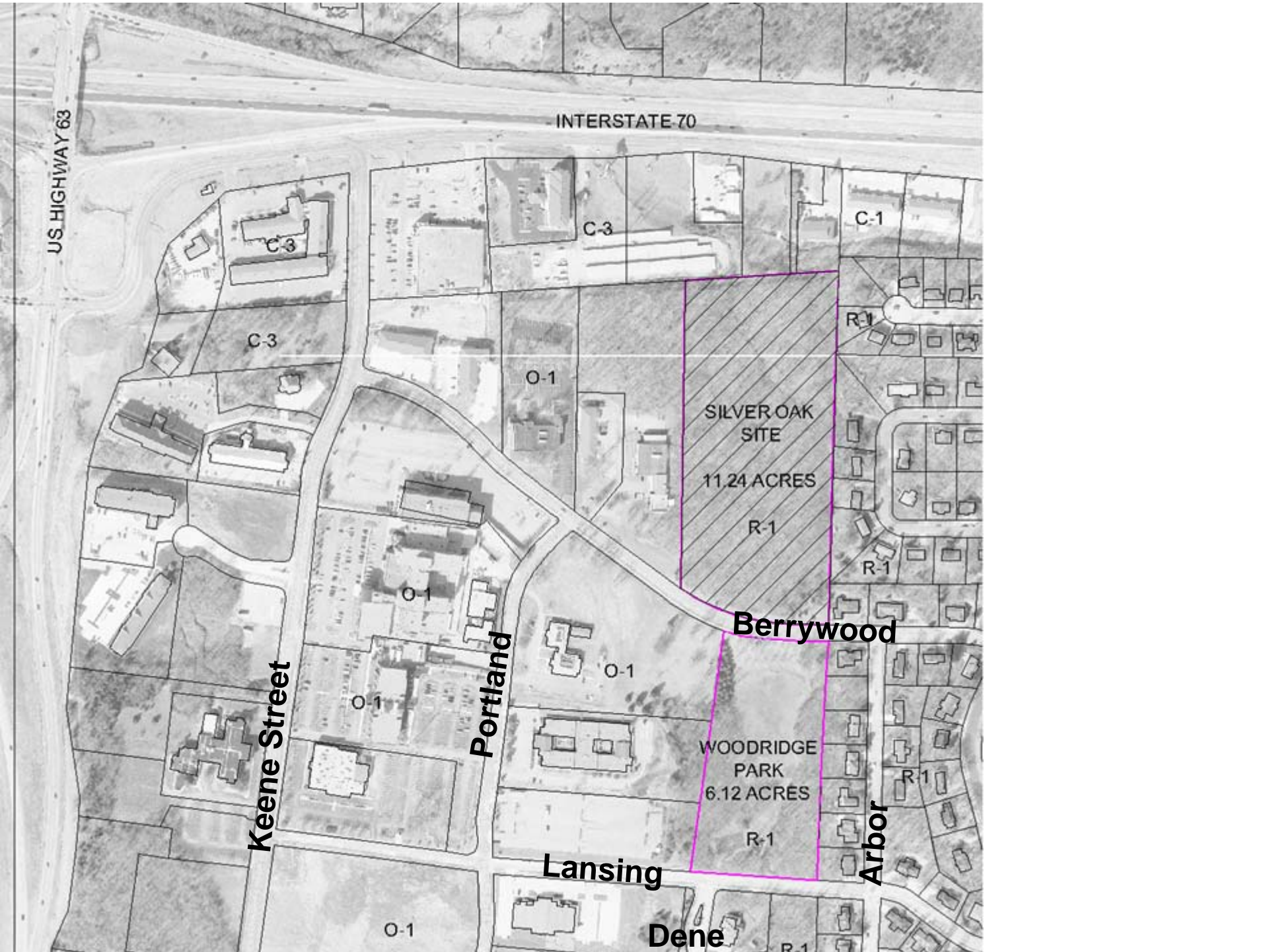
R-1

WOODRIDGE PARK  
6.12 ACRES

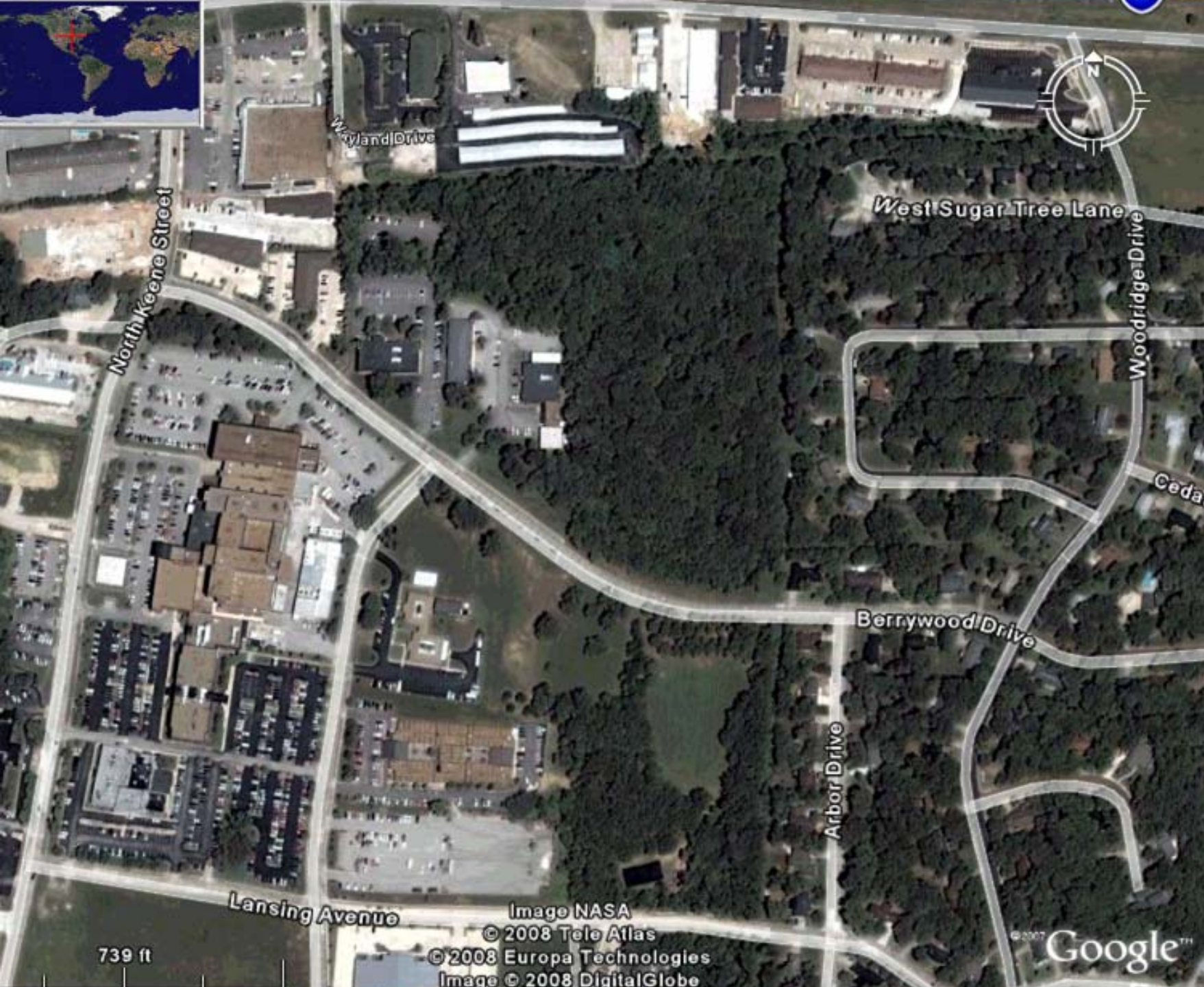
R-1

R-1

R-1





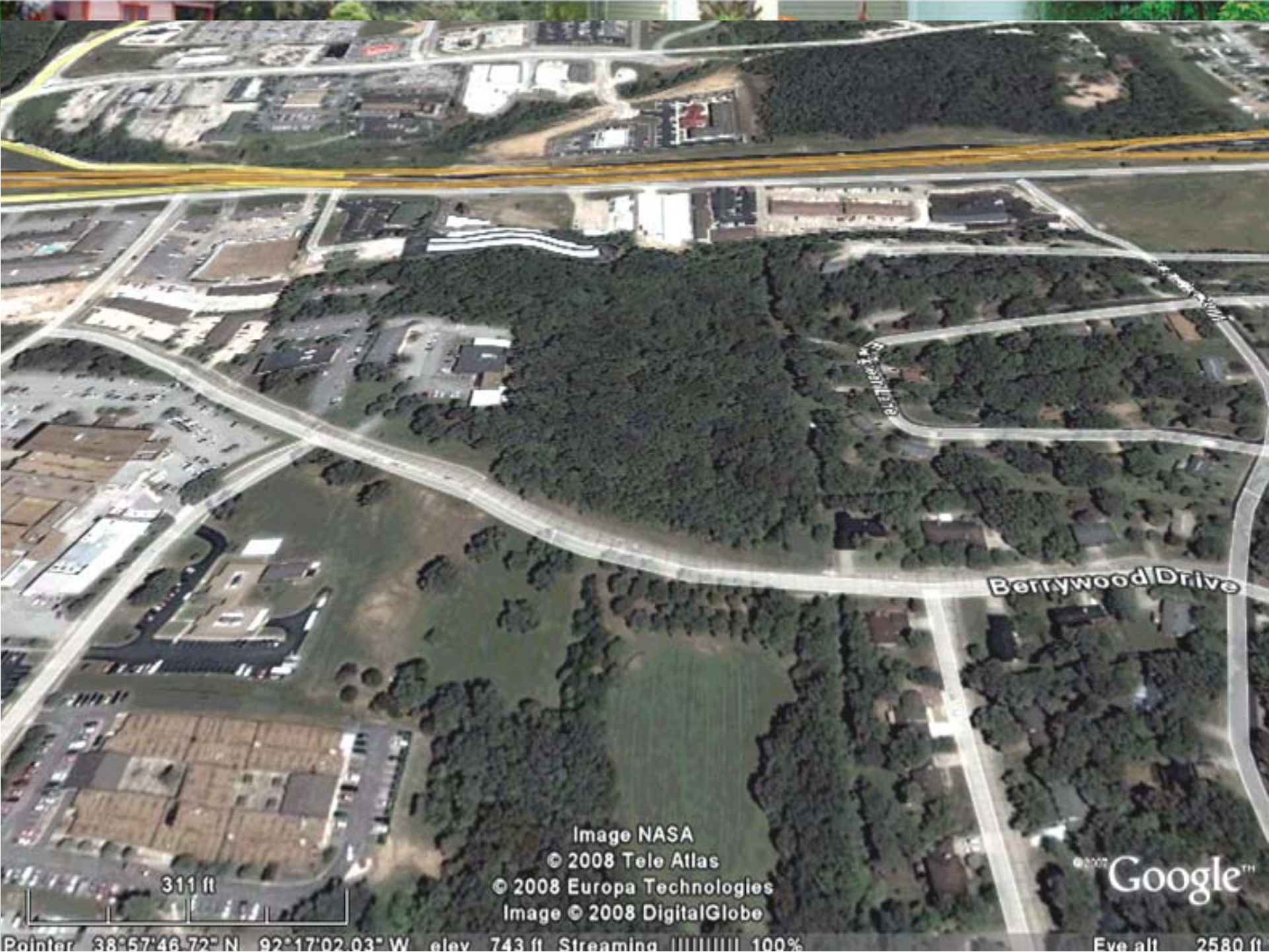


739 ft

Image NASA  
© 2008 Tele Atlas  
© 2008 Europa Technologies  
Image © 2008 DigitalGlobe

© 2007  
Google™





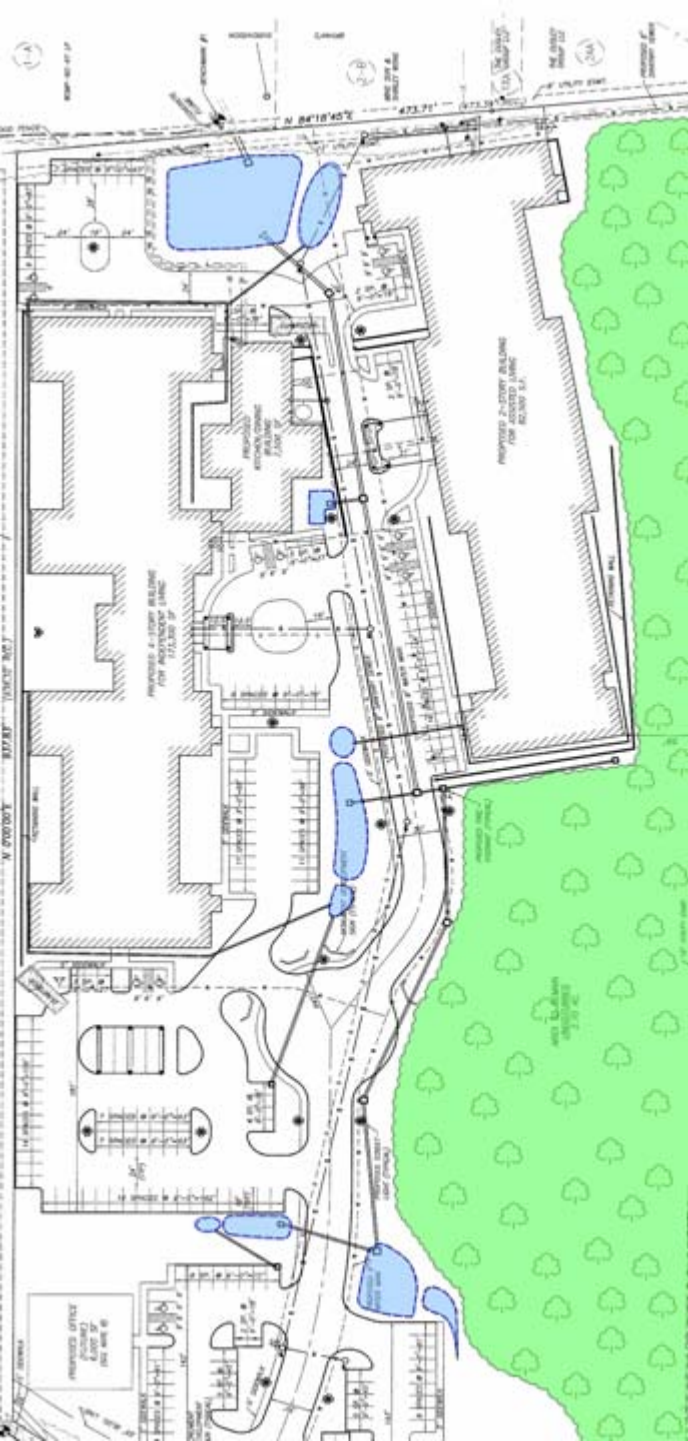
311 ft

Image NASA  
© 2008 Tele Atlas  
© 2008 Europa Technologies  
Image © 2008 DigitalGlobe

© 2007 Google™

Pointer 38°57'46.72" N 92°17'02.03" W elev 743 ft Streaming 100%

Eve all 2580 ft



**Recommendation: Staff does not foresee any adverse impacts to the park as long as BMP's for storm water controls are implemented.**





# 5. Getabout Columbia Trail Design Guidelines







# **6. Boards and Commissions Questionnaire**



## **7. Marketing Update**

Creating Community through  
People, Parks and Programs



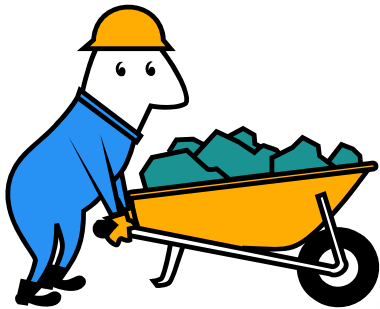


## **8. Council Items**

Farmers Market update

Heibel Building update

# 9. Capital Project Update





# Shade Structures Antimi Baseball Complex



# Shade Structures Antimi Baseball Complex







# Stephens Lake Park Sprayground/Beach Fencing



# SLP Sprayground Mechanical Room





# Grindstone Nature Area Shelter Demo



GNA Shelter Removed



Proposed Shelter Type  
(Paquin Park)



# PMC Office Addition Building Repairs





PMC Office Moving Day





## Trail Maintenance



New rock on portions of MKT Trail,  
Bear Creek Trail, and Twin Lakes



Culvert replacement on Bear Creek Trail



# PMC Greenhouse Operations






**10. Commission Comments**

**11. Staff Comments**

**12. Public Comments**



# Adjourned

A scenic view of a park with a pond, trees, and a gazebo. The trees are in autumn, with some showing orange and yellow leaves. The gazebo is in the background, and the pond is in the foreground, reflecting the trees and sky.

The Department of Parks & Recreation is committed to improving our community's health, stability, beauty, and quality of life by providing outstanding parks, trails, recreational facilities, and leisure opportunities for all Columbia citizens.