

Parks & Recreation Commission Meeting

September 20, 2007





Agenda – September 20, 2007

1. Approval of Agenda Action
2. Approval of Minutes from August Action
3. Approval of August Monthly Report Action
4. Crane Property Update
5. Fall Festivals Report
6. Council Items
7. Capital Project Update
8. Commission Comments
9. Staff Comments
10. Public Comments



4. Crane Property Update

5. Fall Festivals Report

- Roots 'n Blues 'n BBQ
- Heritage Festival and Craft Show



Roots 'n Blues 'n BBQ



30th Annual Heritage Festival

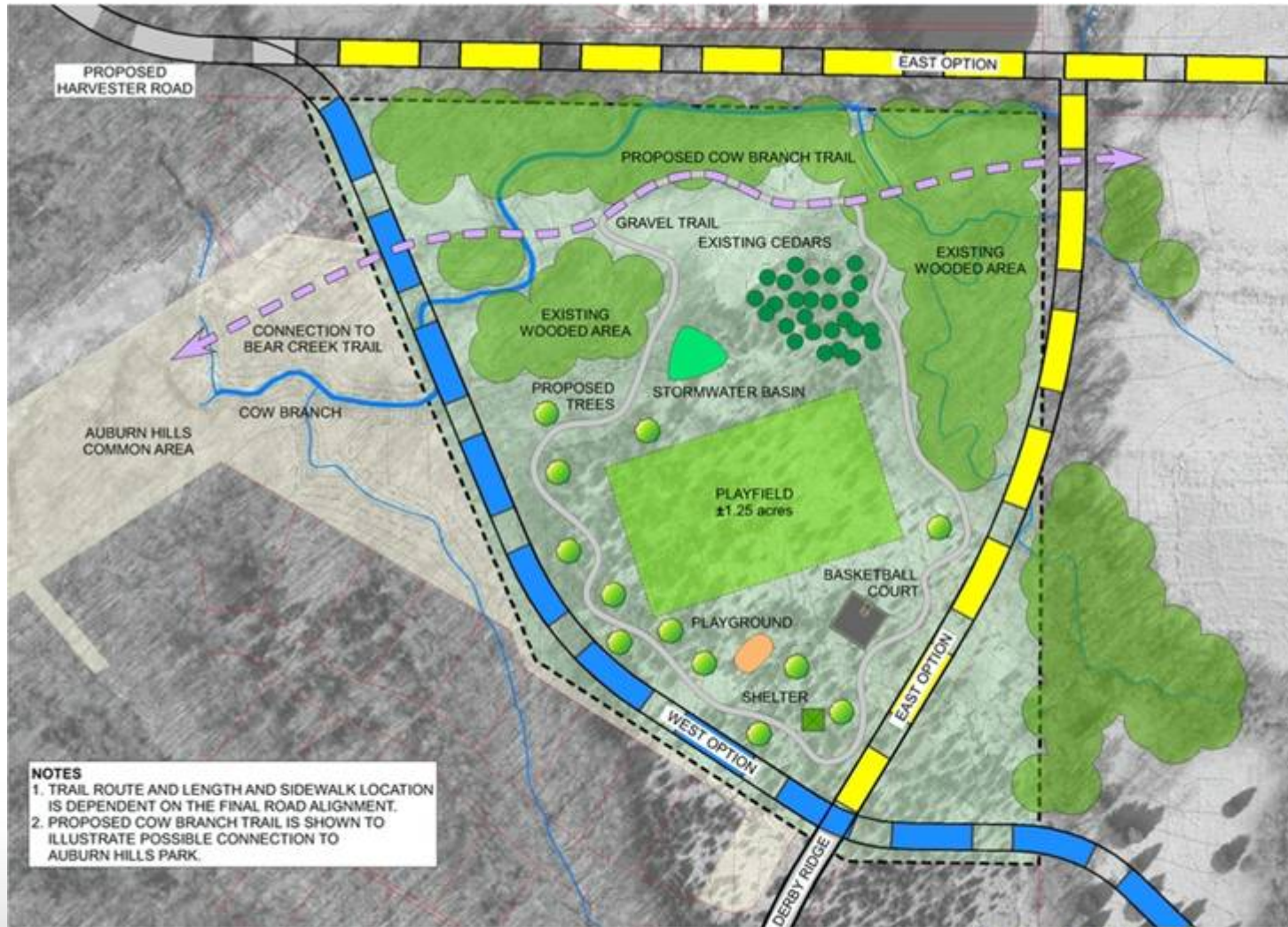




6. Council Update

- Auburn Hills Park Master Plan
- FY'08 Budget
- Update on Alcohol Sales Policy

Recommended Plan



NOTES
 1. TRAIL ROUTE AND LENGTH AND SIDEWALK LOCATION IS DEPENDENT ON THE FINAL ROAD ALIGNMENT.
 2. PROPOSED COW BRANCH TRAIL IS SHOWN TO ILLUSTRATE POSSIBLE CONNECTION TO AUBURN HILLS PARK.



BASKETBALL COURT
(50'x50')



PLAYGROUND

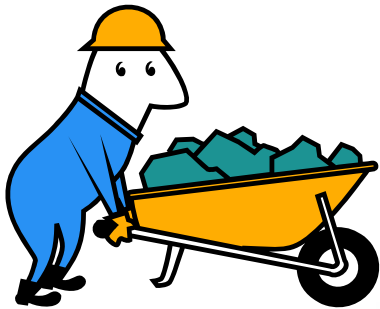


TRAIL



SMALL SHELTER
(28'x28')

7. Capital Project Update



Solar Lights at Stephens East Parking Lot



Stephens Waterfall Bridge



Stephens Waterfall Site



Stephens Spraygrounds



Stephens Spraygrounds Moving Boulders



Lights Installed at Cosmo-Bethel New Parking Lot



Covered Grill Installed at Cosmo-Bethel New Shelter



Louisville Storm Water Runoff



Louisville Park

South Rain Garden Construction



Louisville Park North Rain Garden Construction



Louisville Road Construction



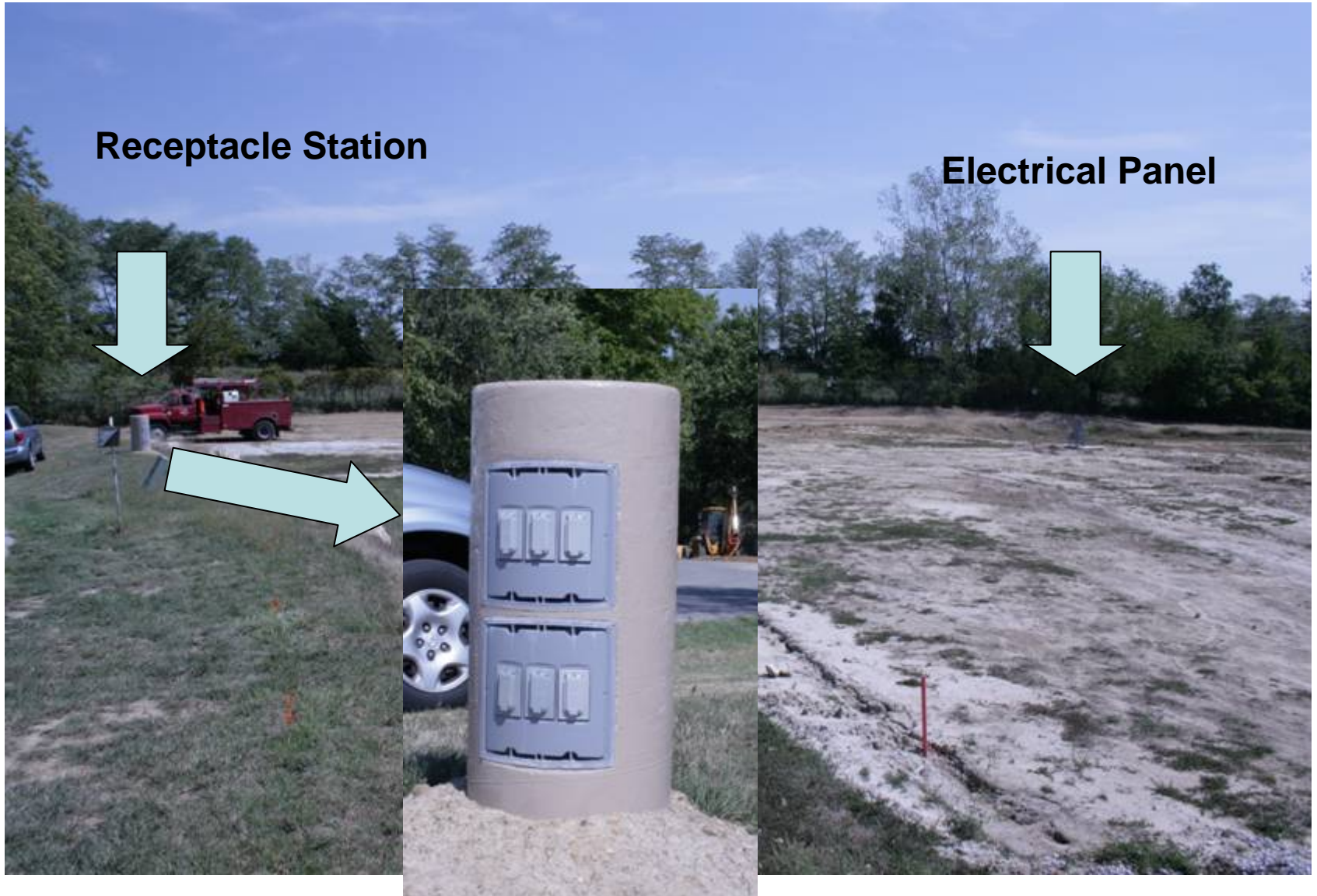
Louisville Park

Louisville Road

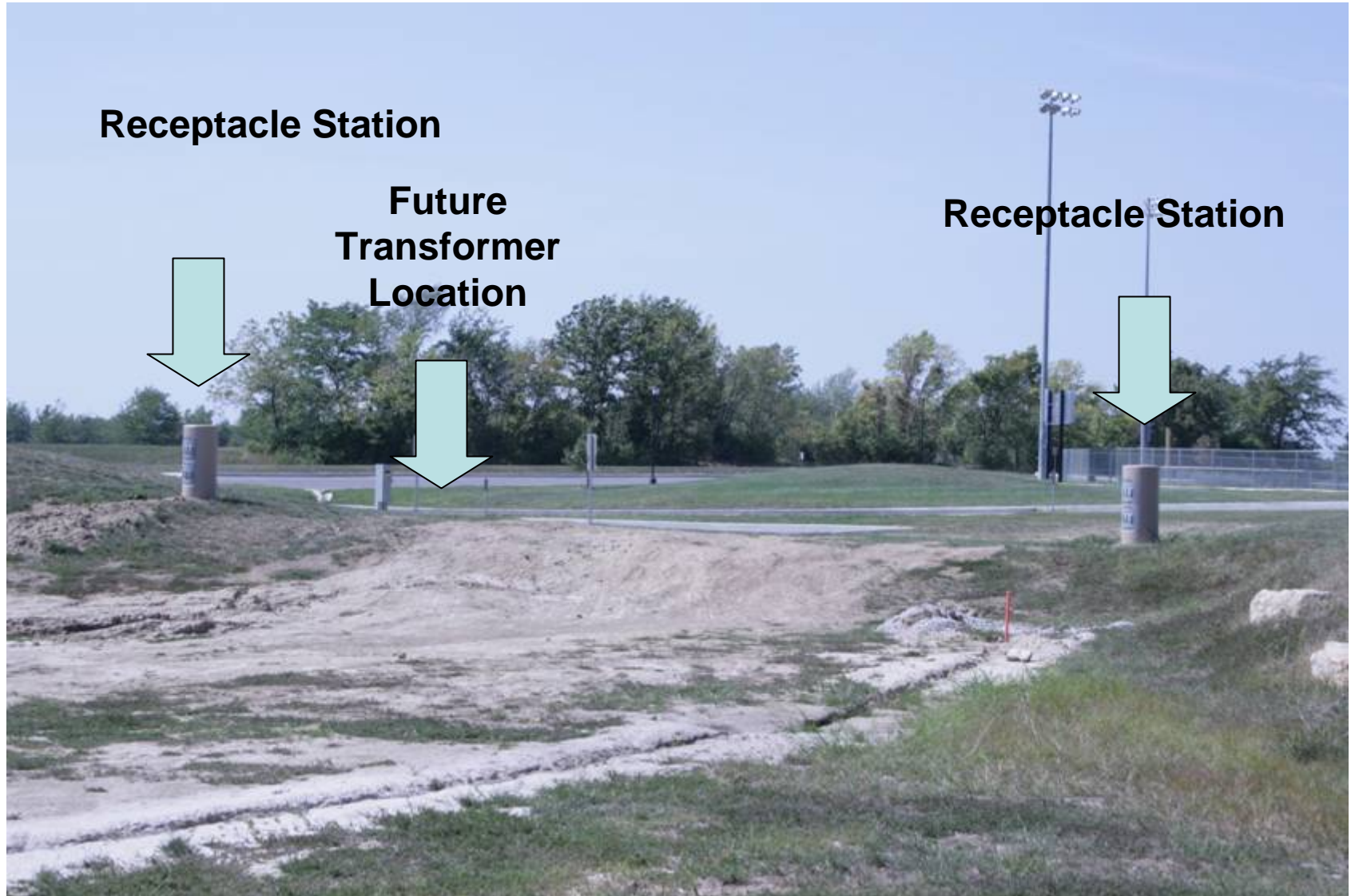
Cosmo R.C. Track - Electrical

Receptacle Station

Electrical Panel



Cosmo R.C. Track - Electrical



Atkins Ballfields



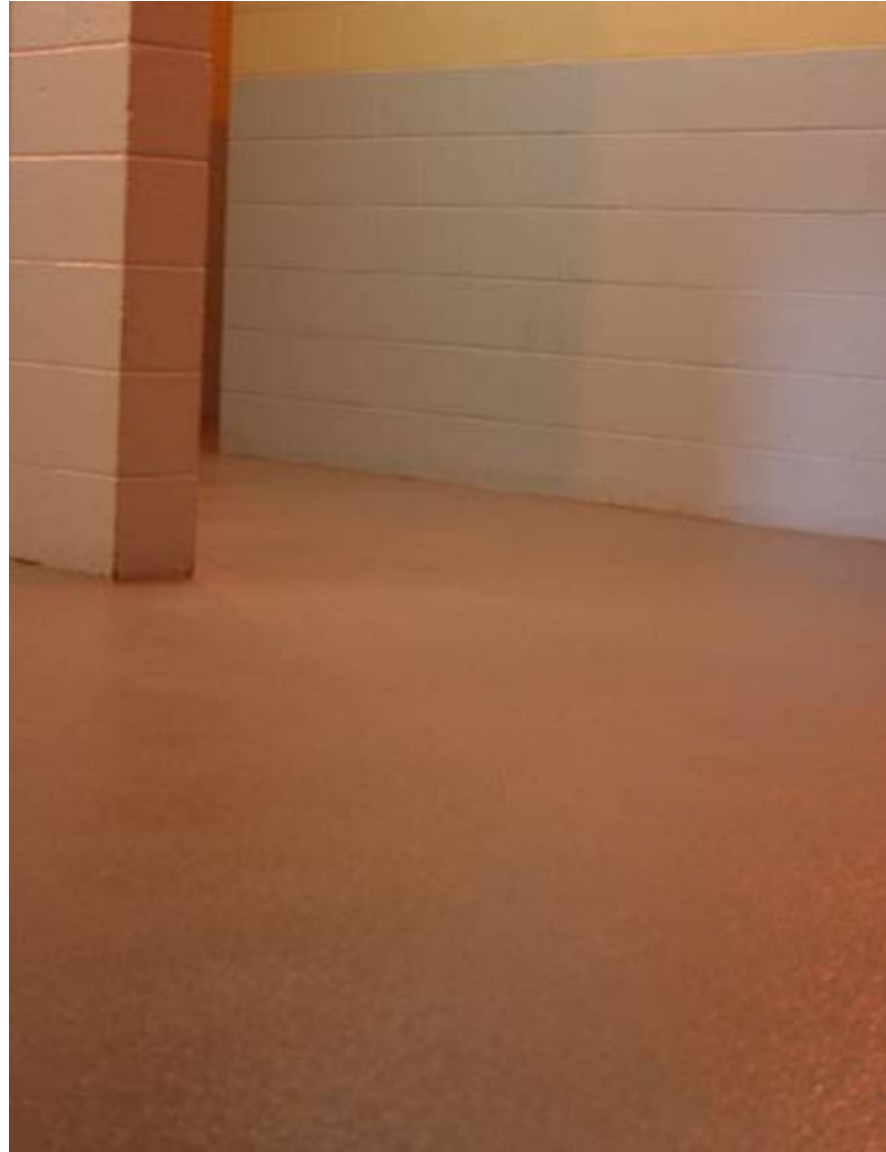
Ridgeway Elementary School City/School Playground Project



Cosmo-Bethel Tennis Resurfacing



Oakland Bathhouse Floor



Longview Shelter



Flat Branch Park - Phase II



Flat Branch Park - Phase II



Flat Branch Park - Phase II



Flat Branch Park - Phase II



Flat Branch Park Phase II



Flat Branch Park - Phase II




Flat Branch Park - Phase II





- 8. Commission Comments**
- 9. Staff Comments**
- 10. Public Comments**

Adjourned

A scenic view of a park with a pond, trees, and a gazebo. The image shows a large, calm pond in the foreground, reflecting the surrounding landscape. In the middle ground, there is a well-maintained green lawn with several large trees, some of which have vibrant autumn foliage in shades of orange, yellow, and red. A white gazebo with a dark roof is situated on the lawn. The background is a clear blue sky. The overall atmosphere is peaceful and beautiful.

The Department of Parks & Recreation is committed to improving our community's health, stability, beauty, and quality of life by providing outstanding parks, trails, recreational facilities, and leisure opportunities for all Columbia citizens.