

Parks & Recreation Commission Meeting

October 23, 2008





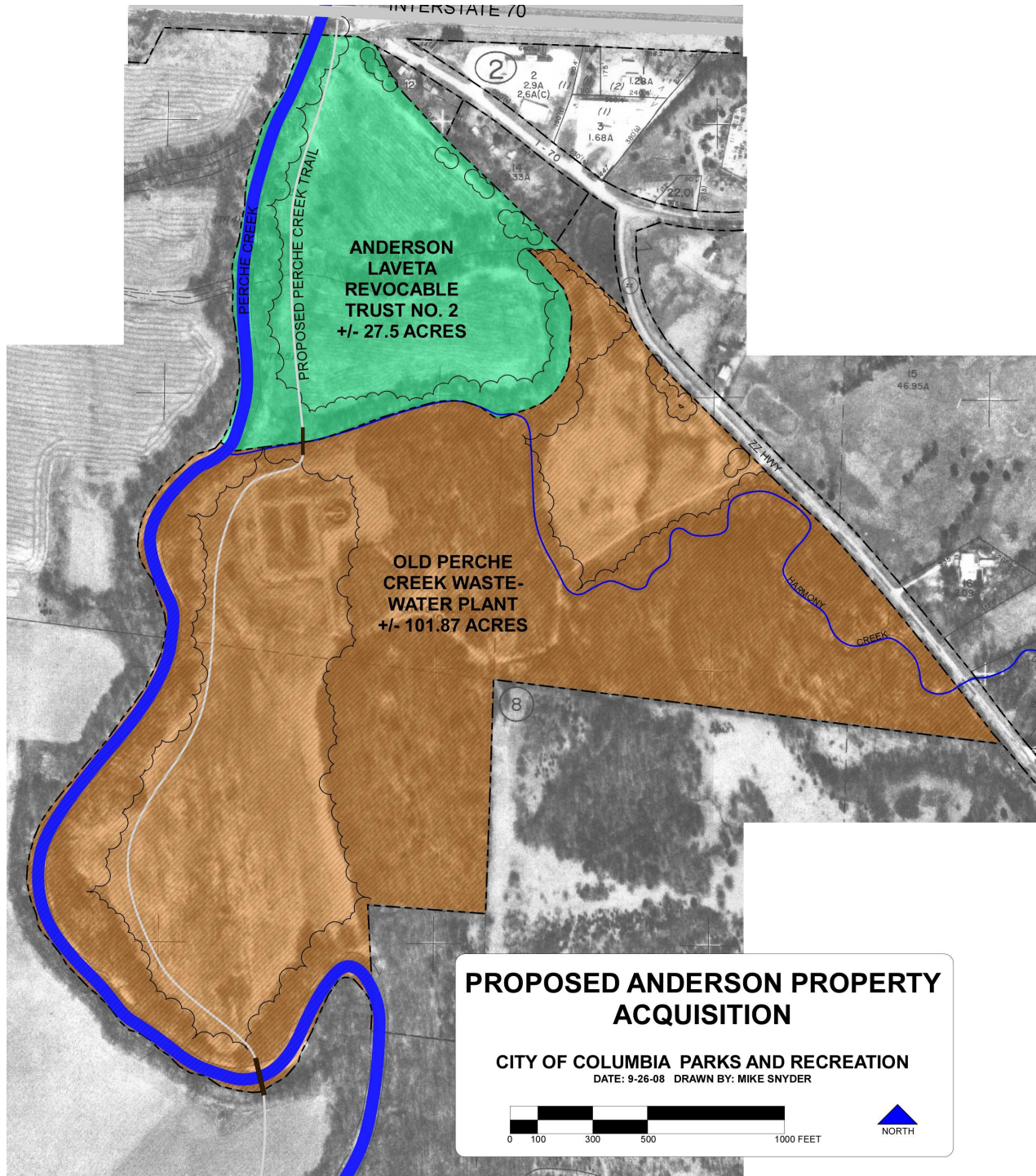
Agenda –October 23, 2008

- | | |
|---|--------|
| 1. Approval of Agenda | Action |
| 2. Approval of Minutes from September | Action |
| 3. Approval of Minutes from Special Meeting | Action |
| 4. Approval of September Monthly Report | Action |
| 5. Land Dedication Ordinance | |
| 6. NRPA Conference Report | |
| 7. Recreation Services Manager vacancy | |
| 8. Council Items | |
| 9. Capital Project Update | |
| 10. Commission Comments | |
| 11. Staff Comments | |
| 12. Public Comments | |



8. Council Items

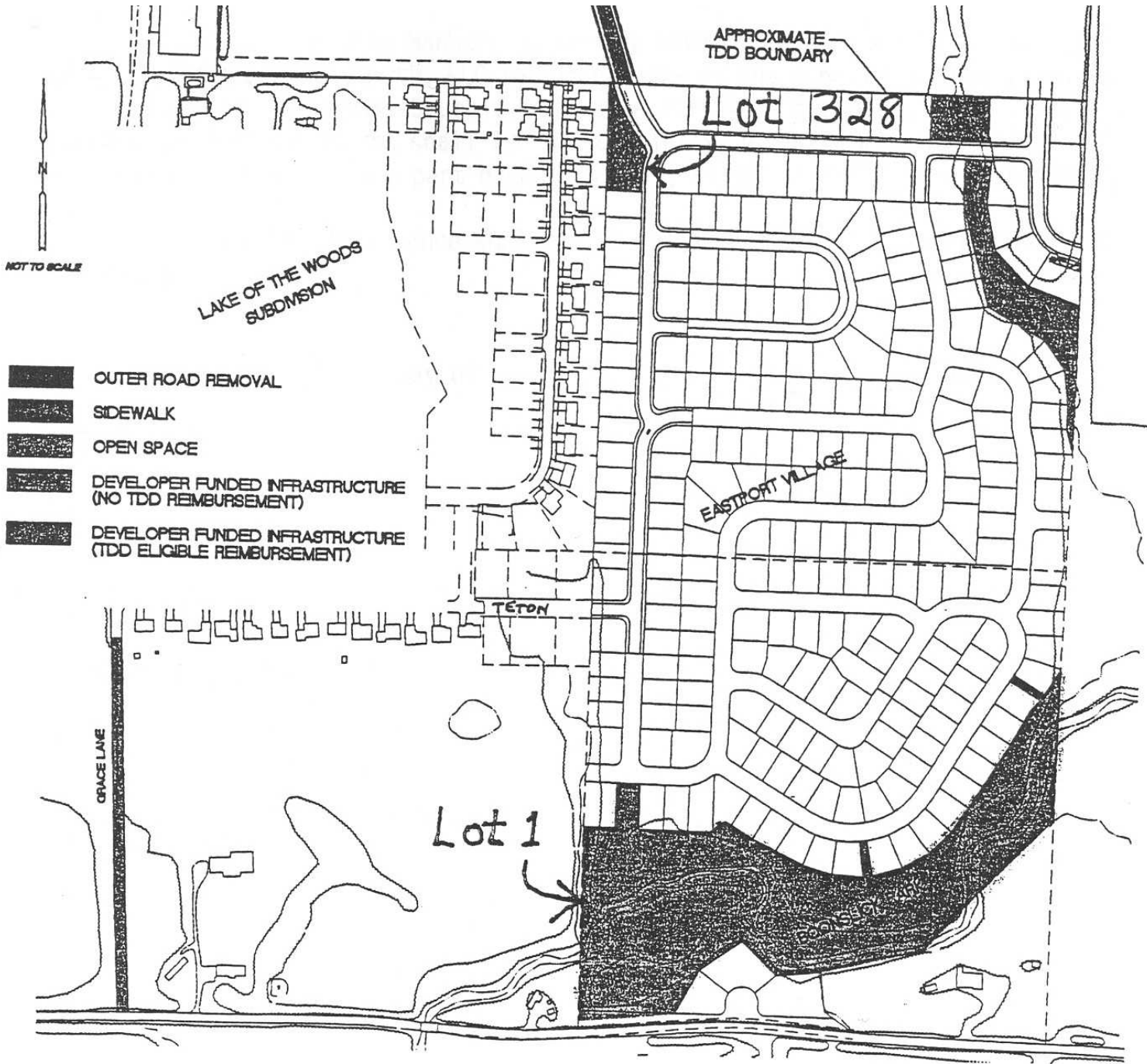
- Anderson Property
- Eastport Neighborhood Park
- County House Trail
- Cosmo-Bethel Tennis Court Donation
- Albert-Oakland Park



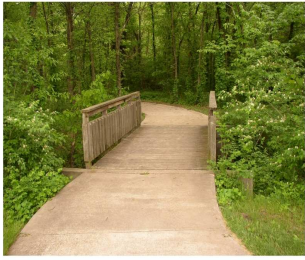
- Anderson Property
- Located near intersection of Strawn Road and I-70.

Eastport Neighborhood Park





PREPARED BY
ALLSTATE CONSULTANTS, P.C.



TYPICAL FOOTBRIDGE



TYPICAL PLAYGROUND ARRANGEMENT



TYPICAL 8'X10' SHELTER



TYPICAL PARK BENCH



TYPICAL 8' GRAVEL TRAIL



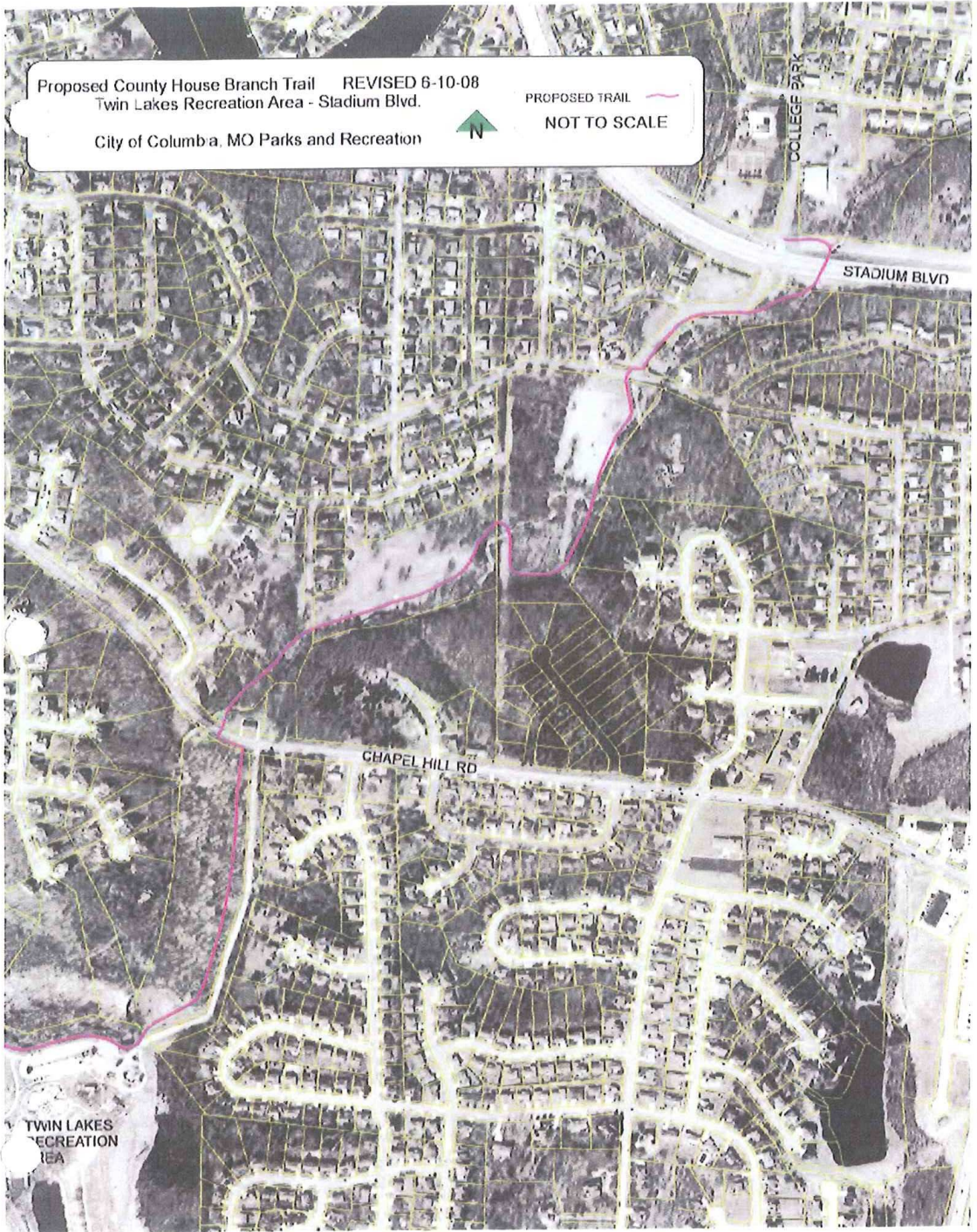
PROPOSED EASTPORT PARK MASTER PLAN

Proposed County House Branch Trail REVISÉ 6-10-08
Twin Lakes Recreation Area - Stadium Blvd.

City of Columbia, MO Parks and Recreation



PROPOSED TRAIL
NOT TO SCALE



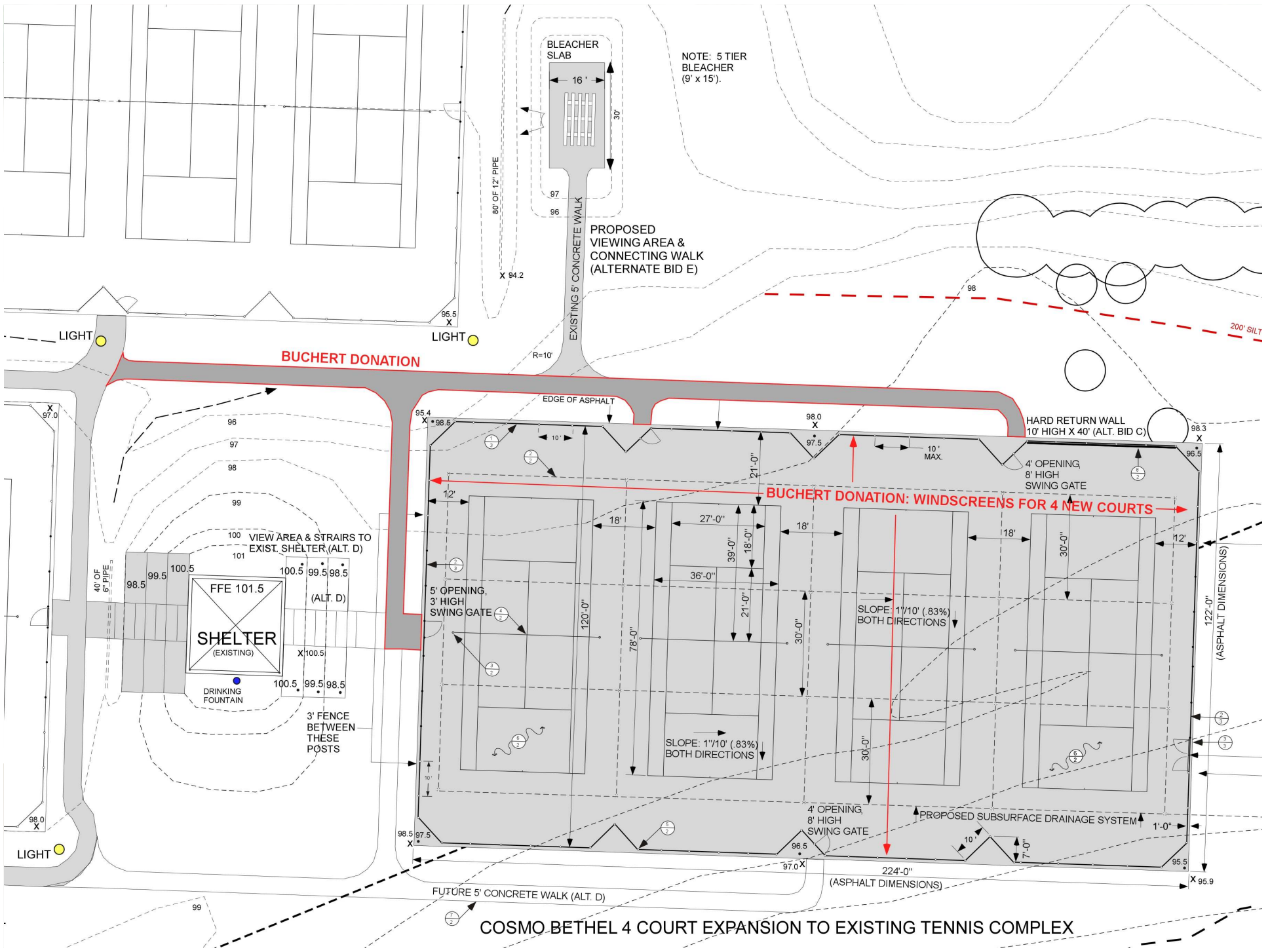
TWIN LAKES
RECREATION
AREA



Cosmo-Bethel Tennis Donation

- Dr. and Mrs. Pete Buchert
- \$18,500 donation
- Windscreens and additional concrete connecting walkways.





NOTE: 5 TIER BLEACHER (9' x 15')

PROPOSED VIEWING AREA & CONNECTING WALK (ALTERNATE BID E)

BUCHERT DONATION

BUCHERT DONATION: WINDSCREENS FOR 4 NEW COURTS

HARD RETURN WALL 10' HIGH X 40' (ALT. BID C)

SHELTER (EXISTING)

DRINKING FOUNTAIN

3' FENCE BETWEEN THESE POSTS

COSMO BETHEL 4 COURT EXPANSION TO EXISTING TENNIS COMPLEX

FUTURE 5' CONCRETE WALK (ALT. D)

(ASPHALT DIMENSIONS)

(ASPHALT DIMENSIONS)

200' SILT

EXISTING 5' CONCRETE WALK

BLEACHER SLAB

16'

30'

80' OF 12" PIPE

80' OF 12" PIPE

80' OF 12" PIPE

80' OF 12" PIPE

80' OF 12" PIPE

80' OF 12" PIPE

80' OF 12" PIPE

80' OF 12" PIPE

80' OF 12" PIPE

80' OF 12" PIPE

80' OF 12" PIPE

80' OF 12" PIPE

80' OF 12" PIPE

80' OF 12" PIPE

80' OF 12" PIPE

80' OF 12" PIPE

80' OF 12" PIPE

80' OF 12" PIPE



9. Capital Project Update





Parks Management Center Repair of Hail Damaged Roof





PMC Improvements Greenhouse Addition





Atkins Park Paving





Atkins Park Seeding





Stephens Lake Park Upper Pools of Waterfall





Flat Branch Park C.A.R.P. Project 09/06/08





Auburn Hills Park TreeKeepers Project 9/27/08



Auburn Hills Park

64 Trees Added Along Trail





Westwinds Park TreeKeeper Project 9/27/08



24 Trees Planted



Trail Resurfaced with New Rock



New Restrooms - Completed CCRA and C-Bethel Parks



Hickman High School Baseball Field



Removed infield skin and re-graded in preparation for new sod



Cosmo Bethel Park 4-Court Tennis Addition





Cosmo Bethel Park - Large Shelter Drinking Fountain, Grills





Cosmo Bethel Park Sidewalk Connections



Cosmo-Bethel Rededication October 12, 2008



Cosmo-Bethel Rededication October 12, 2008





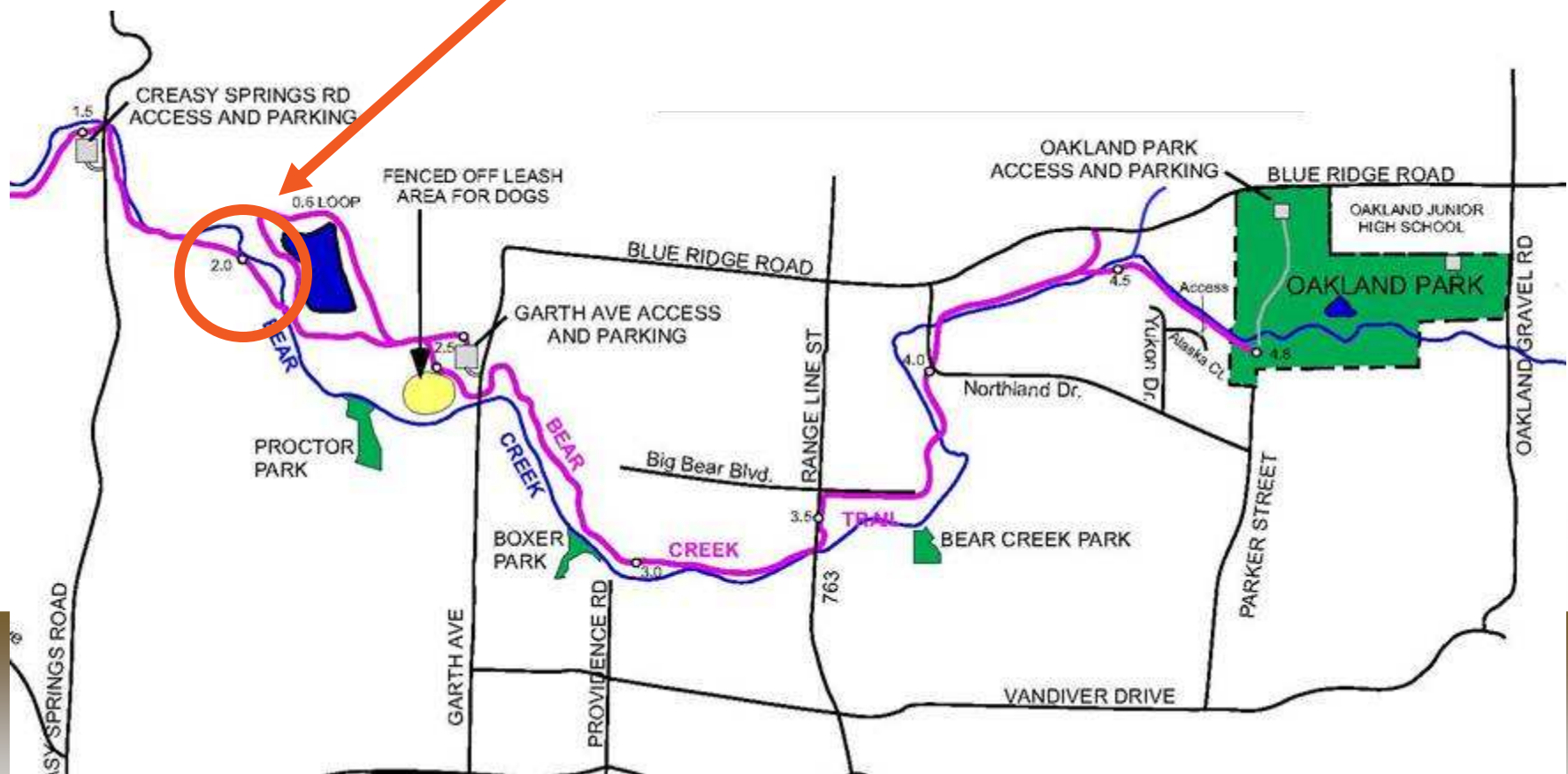
Cosmo-Bethel Park One Sky – One World Event





Bear Creek Trail - Storm Damage Repair

Difficult area to access between boardwalk and bridge



Maintenance trucks must cross
low water crossing to access area
between bridge and boardwalk



Low Water Crossing



First Attempt: Week of 9/22

























10. Commission Comments

11. Staff Comments

12. Public Comments



ARC – Town Hall Meeting



ARC – Town Hall Meeting



Flat Branch Park Stream Extravaganza 9/18/08





Heritage Festival 2008



Adjourned

A scenic view of a park with a pond, trees, and a gazebo. The pond is in the foreground, reflecting the surrounding greenery and the sky. The trees are in various stages of autumn, with some showing vibrant orange and yellow leaves. In the background, a gazebo is visible on a grassy area. The overall atmosphere is peaceful and serene.

Creating Community through People, Parks and Programs