

Parks & Recreation Commission Meeting

March 18, 2010





Agenda – March 18, 2010

- | | |
|--|--------|
| 1. Approval of Agenda | Action |
| 2. Approval of Minutes from February | Action |
| 3. Approval of February Monthly Report | Action |
| 4. Visioning Presentation – Dee Dokken | |
| 5. Dog Park Report | |
| 6. MPRA Conference Report | |
| 7. Park Names Discussion | |
| 8. Council Items | |
| 9. Capital Project Update | |
| 10. Recreational Services Update | |
| 11. Commission Comments | |
| 12. Staff Comments | |
| 13. Public Comments | |



5. Dog Park Report

- Staff directed by Council to investigate the option of adding a dog park or off-leash area to Stephens Lake Park.
- City Manager requested P&R Commission review and recommendation prior to sending report to Council.



Dogs in Parks

- Dogs on-leash are allowed in all parks except for a few restricted areas such as pools, playgrounds, golf courses and some athletic complexes.
- ***Off-Leash Area (OLA)*** is a definable space within a park that is identified by signage as available for off-leash dog activity. The space is not enclosed with fencing, but is defined by park elements such as topography, landscaping or pathways.
- ***Dog Park*** is a special fenced area for dogs to exercise and socialize.



Off-Leash Sites

- Cosmo Park: Bear Creek Nature
- Grindstone Nature Area
- Hinkson Woods Recreation Area

Dog Parks

- Twin Lakes Recreation Area
- Garth Nature Area (Bear Creek Trailhead)
- Indian Hills (recently approved and will be constructed in 2010)



Options for Dog Park at Stephens Lake Park

- West side of the park consists of developed recreation areas with the only available open space being located in the special event area that is designated for large events such as Art in the Park.
- East side has open space, but these are planned for future arboretum development as shown on the Stephens Lake Park Master Plan.



Options for Dog Park at Stephens Lake Park East Side of Park

- Open Space Play Field: heavily used by teams and official events such as SMSG
- Savanna/Stream Bank Restoration: area around creek funded by MDC & US Army Corp.
- Riechmann Pavilion: high use facility including wedding rentals and day camp.
- Arboretum: Red Bud, Oak, Fruit and Nut Tree Collections, Prairie Restoration Area and wetlands. Many of these are under development

Options for Dog Park at Stephens Lake Park East Side of Park

- Staff is working on a proposal to create an educational “Discovery Garden.”
- Discovery Garden is a botanical garden and consists of 5-6 individually themed gardens interconnected with pathways.
- The goal is to provide a public setting that is both attractive and educational, where horticulture serves as a destination point that draws people to the park.
- Estimate cost to build: \$60,000 and can be built in phases





Options for Dog Park at Stephens Lake Park East Side of Park

- The Discovery Garden is not specifically called out in the Stephens Master Plan, so if a dog park is a priority, then staff feels that this is the best location.
- 3.2 acre Dog Park will fit in this location.
- Staff recommends that it be constructed to match the high quality standards of existing Stephens amenities.
- Estimated cost for staff to construct: \$84,234
 - Cost includes a parking lot
- There is not a funding source for this amenity.

View of Possible Dog Park/Discovery Garden Area





Stephens Lake Park Use Area-East Side Attachment A





Advantages

- Centrally located.
- Space available for 3.2 acre dog park and appropriate parking.
- Nearby residential development.
- Stephens has a high visitor use which could translate into a high use of the dog park.

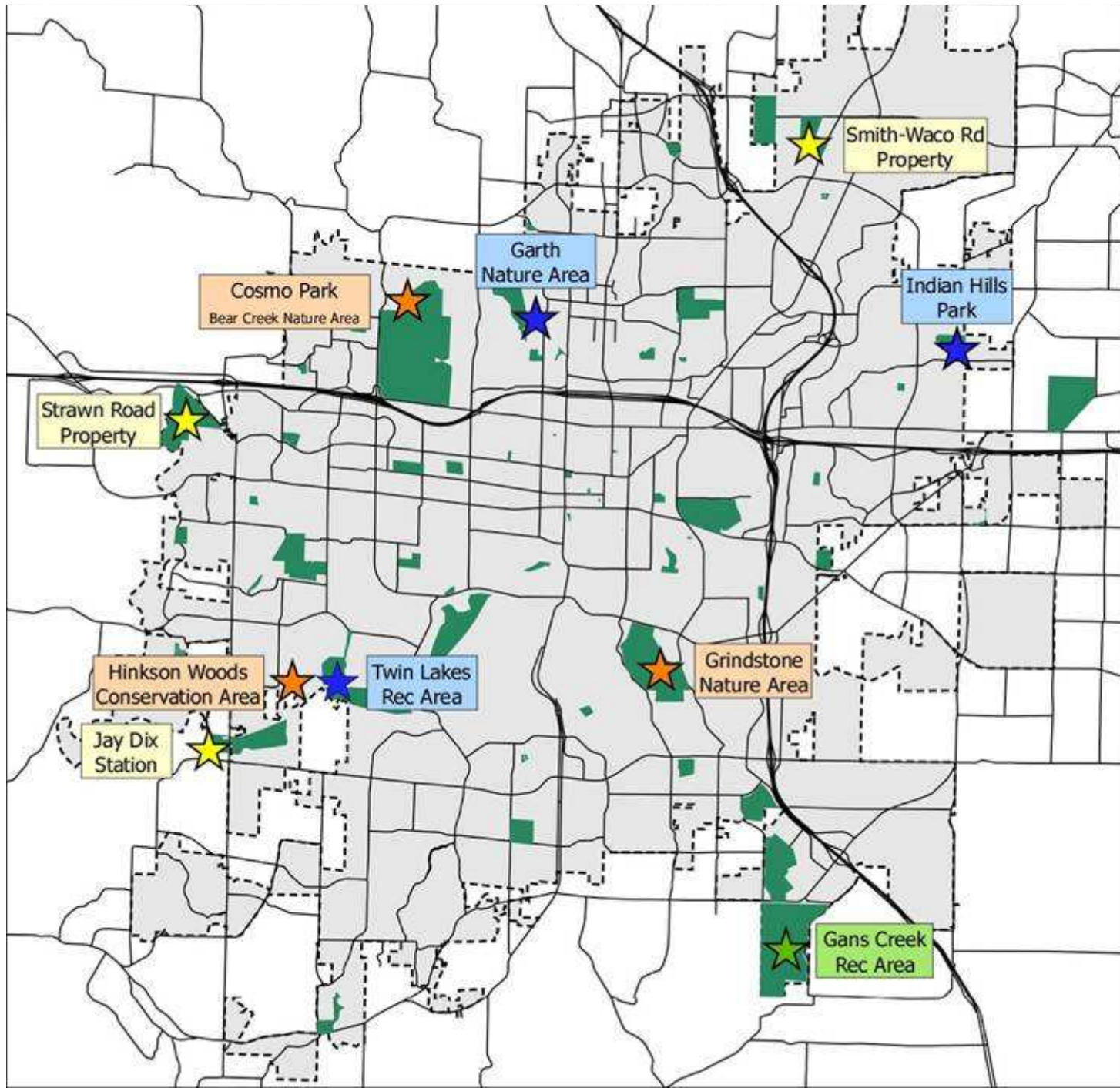
Disadvantages

- Not on SLP Master Plan
- Incompatible with arboretum development
- Space already being used.
- Concerns from neighbors about noise.
- Aesthetics
- Higher const cost
- Have to build a parking lot
- Special Events and park rentals may see dog park as a detriment.
- Loss in revenues



Potential for Other Leash Free Sites

- **Gans Creek Recreation Area (GCRA)** master plan currently includes a 2.5 acre dog park.
- **Smith-Waco Road Property:** This 40 acre park, just south of the new Alpha Hart Lewis Elementary School, is similar in size and has the potential for amenities similar to Cosmo-Bethel Park.
- **Strawn Road Property:** This 129 acre park, at 801 North Strawn Road is home to the future Perche Creek Trail. Portions of the land does flood during prolonged rain events.
- **Jay Dix Station:** This 30 acre park at 3775 S. Scott Blvd currently serves as a trail head for the MKT Trail. The park will eventually be developed with neighborhood park amenities such as a playground and small shelter. There is a small 36 car parking lot on the site that may have to be expanded.



Cosmo Park Bear Creek Nature Area
 Grindstone Nature Area
 Hinkson Woods Conservation Area
 MO Dept of Conservation Area

★ Existing Fenced Leash Free Area

Garth Nature Area
 Twin Lakes Recreation Area
 Indian Hills Park

★ Proposed Fenced Leash Free Area

Gans Creek Recreation Area

★ Potential Dog Area-
 Type Not Determined

Jay Dix Station
 Smith-Waco Property
 Strawn Road Property





Staff Recommendation

- Staff recommends that the Commission accept this report which will direct staff to:
 1. Continue with the original Stephens Lake Park “Park and Arboretum” Master Plan, without a dog park.
 2. Continue with the preparation of individual park master plans that may or may not include dog parks or off-leash areas.
 3. Evaluate other parks and where allowed, other City owned sites for potential dog parks or off-leash areas.



Possible Commission Recommendations

1. Accept the report which will direct staff to:
 - **Continue with the original Stephens Lake Park “Park and Arboretum” Master Plan, without a dog park.**
 - **Continue with the preparation of individual park master plans that may or may not include dog parks or off-leash areas.**
 - **Evaluate other park and where allowed, other City owned sites for potential dog parks or off-leash areas.**
2. Accept the report with Commission revisions.
3. Direct staff to develop other options including the inclusion of a dog park at Stephens Lake Park.
 - **If this option is selected, a revision of the master plan may be appropriate including public input through interested party meetings, surveys and public hearings.**
4. Other options as recommended by Commission



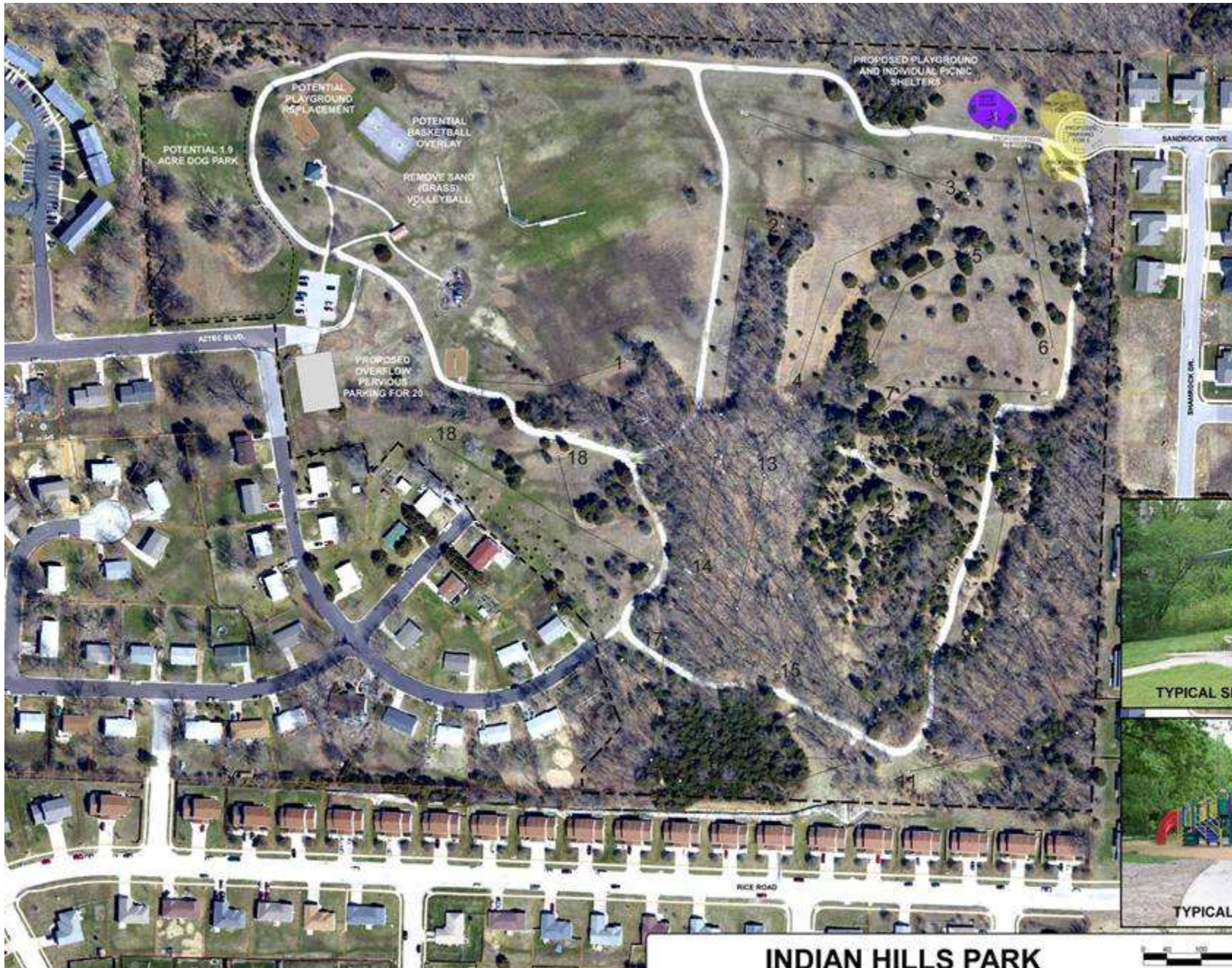
6. MPRA Conference Report

7. Park Names Discussion



8. Council Items

1. Gans Creek Recreation Area/ Philips Park Master Plan
2. Indian Hills Park Improvements
3. Lange Neighborhood Park



TYPICAL SINGLE TABLE SHELTER



TYPICAL PARK PLAYGROUND

**INDIAN HILLS PARK
POTENTIAL PARK IMPROVEMENTS**

CITY OF COLUMBIA, MO PARKS AND RECREATION 1-26-10

NORTH



Overall Site Plan

100 0 100



Lange Park Plan 5.2 Acre Area

150 0 150

Proposed Park Amenities



Gravel Trail



Small Shelter



Open Playfield



Playground

Proposed School Amenities



Soccer/Football Field



Full Court Basketball



Baseball Field



Lange Park Draft Master Plan

December 2, 2009



9. Capital Project Update





Rock Quarry Park Full Court Basketball





L.A. Nickell Clubhouse Improvements



New paint and baseboards



New base cabinets at concession counter



Lake of the Woods Golf Course New Tournament Scoreboard





Eastport Park Trail Development & TreeKeeper Project





Stephens Lake Park Amphitheater Sound Stage Excavation





MKT Bridge No. 12 Replacement Removing Original Bridge Structure





MKT Bridge No. 13 Replacement New Bridge 80% Complete



March 9, 2010

PMC Improvements Exterior Siding Replacement Building Face & Entrance





American Legion Park Removed Fencing on Smaller Field





Douglass Park Sprayground Construction





Douglass Park Re-Seeding Baseball Field





PMC Tree Nursery Gravel Bed for New Trees



Improves root development of bareroot trees



PMC Greenhouse Spring Bedding Plants





10. Recreation Services Update



Golf



Adult golf lessons begin end of April.
Junior golf lessons begin in June, when school is out.



Preschool



St. Patty's Day Party: Kids made Leprechaun hats and tested their luck with a few games of Bingo.



Zumba at SLAC



New, popular class held at Riechmann and Stephens Lake Activity Center.



Tae Kwon Do



Belt testing was held for the classes in February.



Upcoming Events

- **March 20: Train Show at Paquin Tower**
- **March 25: Flashlight Easter Egg Hunt at Riechmann Pavilion**
- **April 3: Egg Hunt EGGstravaganza at Douglass Park**
- **April 7: Tons of Trucks at Cosmo Park**
- **April 10: Kite Flying Day at Douglass Park**
- **April 21: Family Fun Fest: Teen Fest at Flat Branch Park**



11. Commission Comments

12. Staff Comments

13. Public Comments

A photograph of a park landscape. In the foreground, there is a stone wall made of large, grey, irregular rocks. To the left of the wall, there is a bed of brown mulch with several clusters of bright yellow daffodils. To the right of the wall, there are more daffodils and some green foliage. In the background, there are several trees, some with bare branches and some with green leaves. A paved road or path is visible on the left side of the image. A green rectangular box is overlaid on the top left of the image, containing the word "Adjourned" in white text.

Adjourned

Creating Community Through People, Parks and Programs