

Parks & Recreation Commission Meeting

November 20, 2008



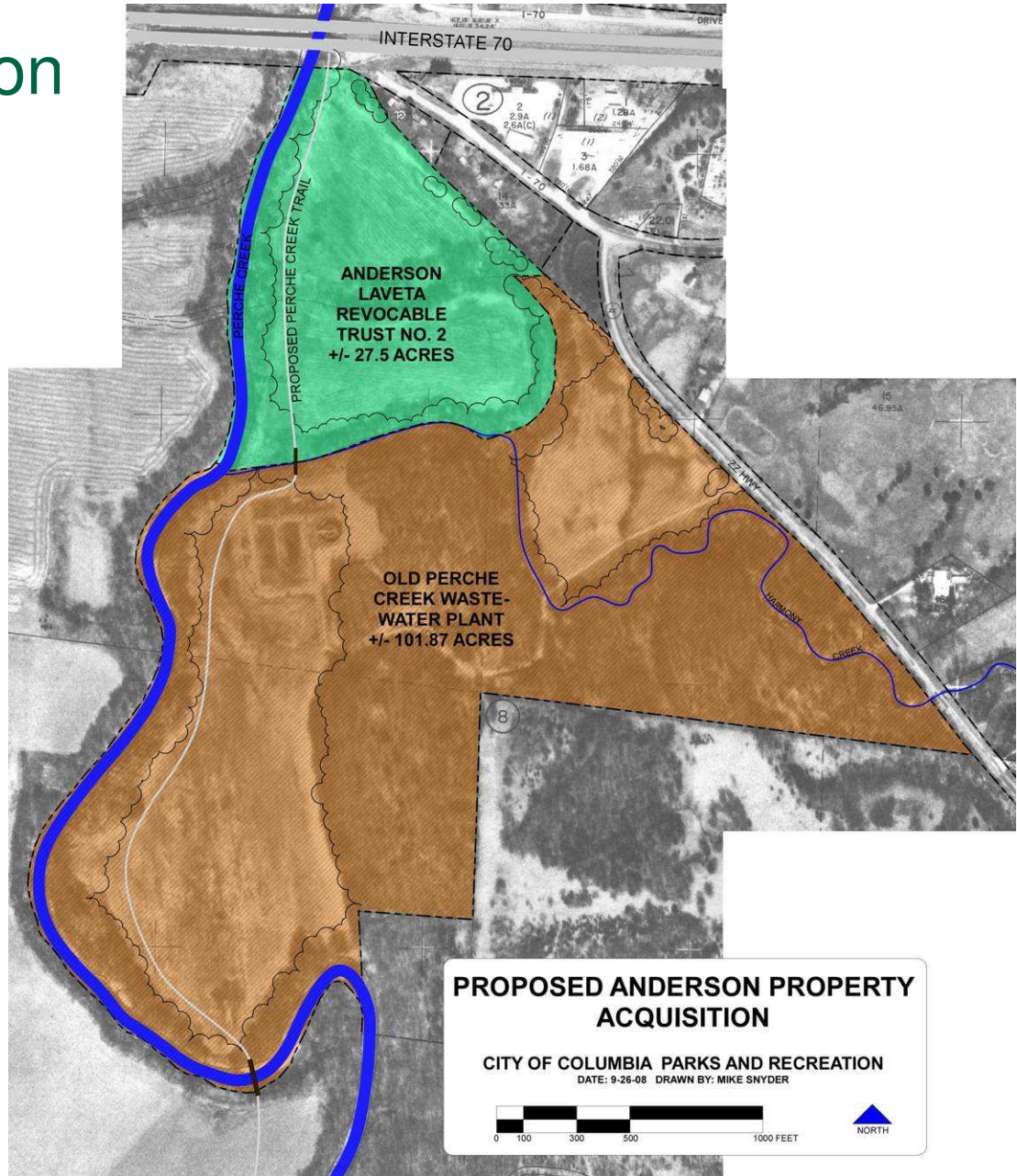


Agenda –November 20, 2008

1. Approval of Agenda Action
2. Approval of Minutes from October Action
3. Approval of October Monthly Report Action
4. Rezoning: Anderson tract Action
5. Visioning Implementation Plan
6. Fees and Charges Study
7. MPRA Conference: March 10-13, 2009
8. Council Items
9. Capital Project Update
10. Commission Comments
11. Staff Comments
12. Public Comments

4. Rezoning: Anderson Tract

- Voluntary Annexation
- 27.7 acres
- Future park land
- Perche Creek Trail
- Allows for access under I-70





5. Visioning Implementation Plan

6. Fees and Charges Study



7. 2009 MPRA Conference

- March 10-13, 2009
- Kansas City





8. Council Agenda Items

- Eastport Neighborhood Park

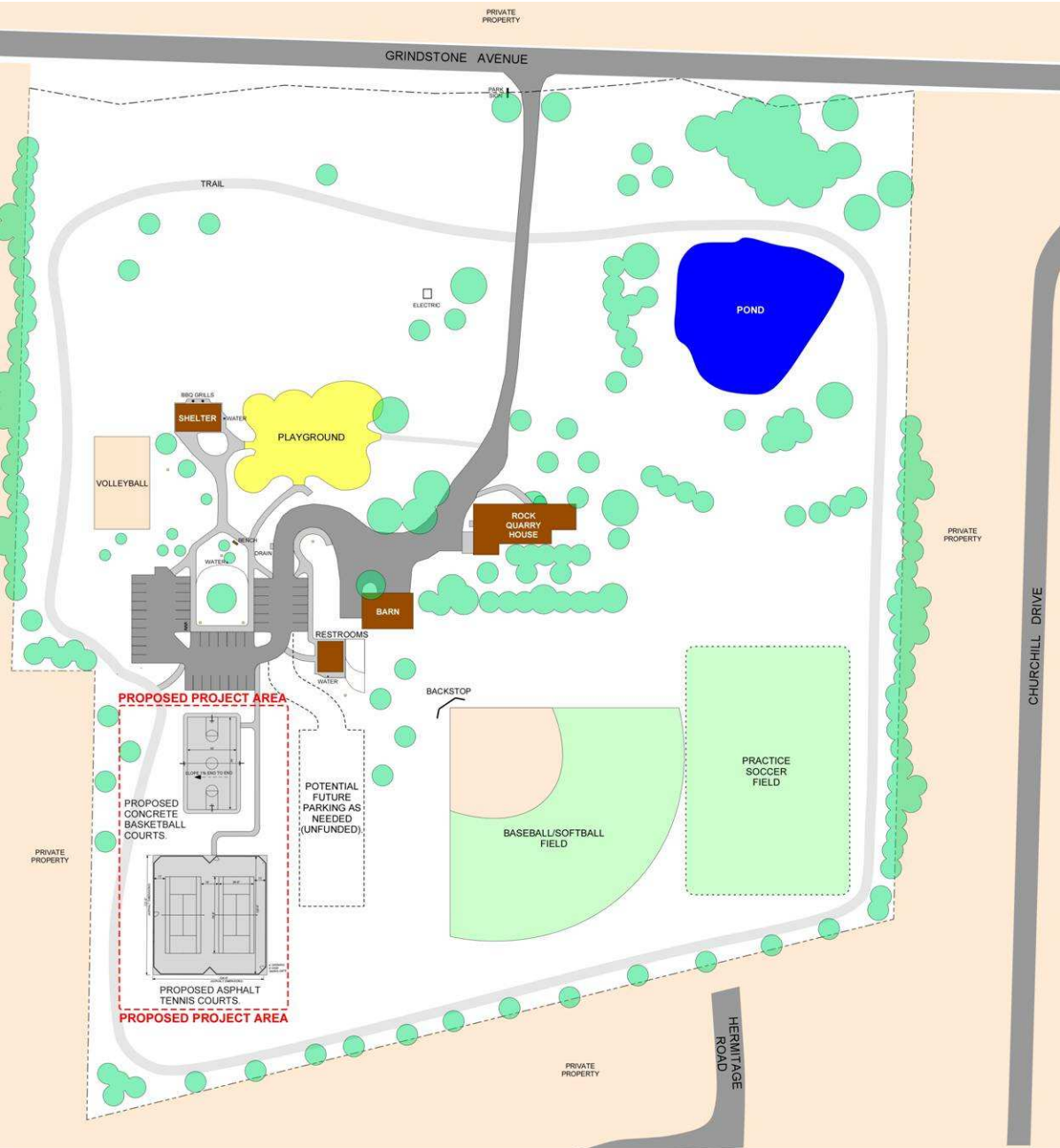


PROPOSED EASTPORT PARK MASTER PLAN



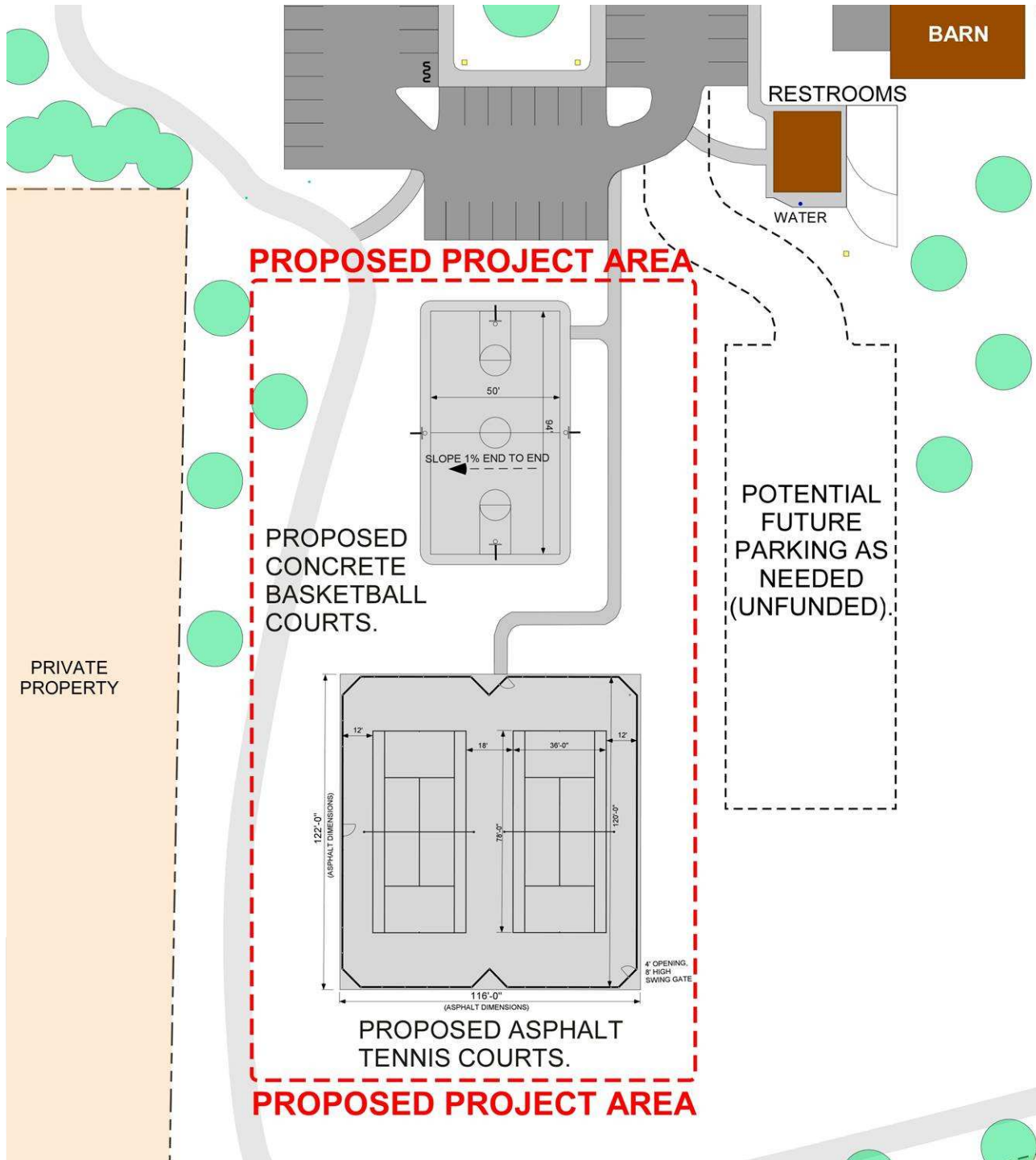
8. Council Agenda Items

- Rock Quarry Park Improvements



CONCEPTUAL MASTER PLAN FOR NEW TENNIS AND BASKETBALL COURTS
ROCK QUARRY PARK CITY OF COLUMBIA PARKS AND RECREATION 9-17-08

0 25 50 100 150 FEET



8. Council Agenda Items

- Rock Quarry Park Improvements

8. Council Agenda Items

- Cascades Neighborhood Park



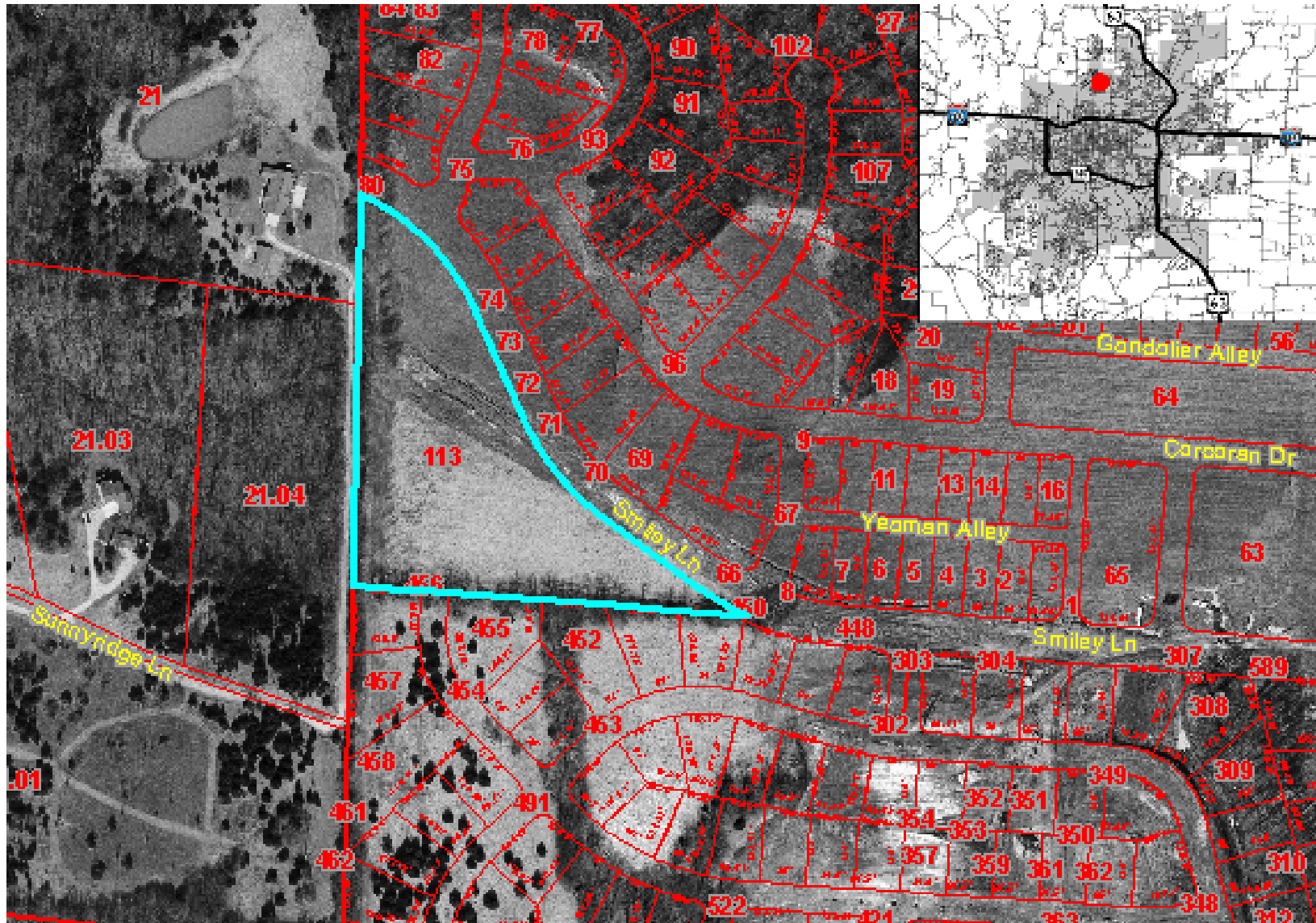
8. Council Agenda Items

- Cascades Neighborhood Park



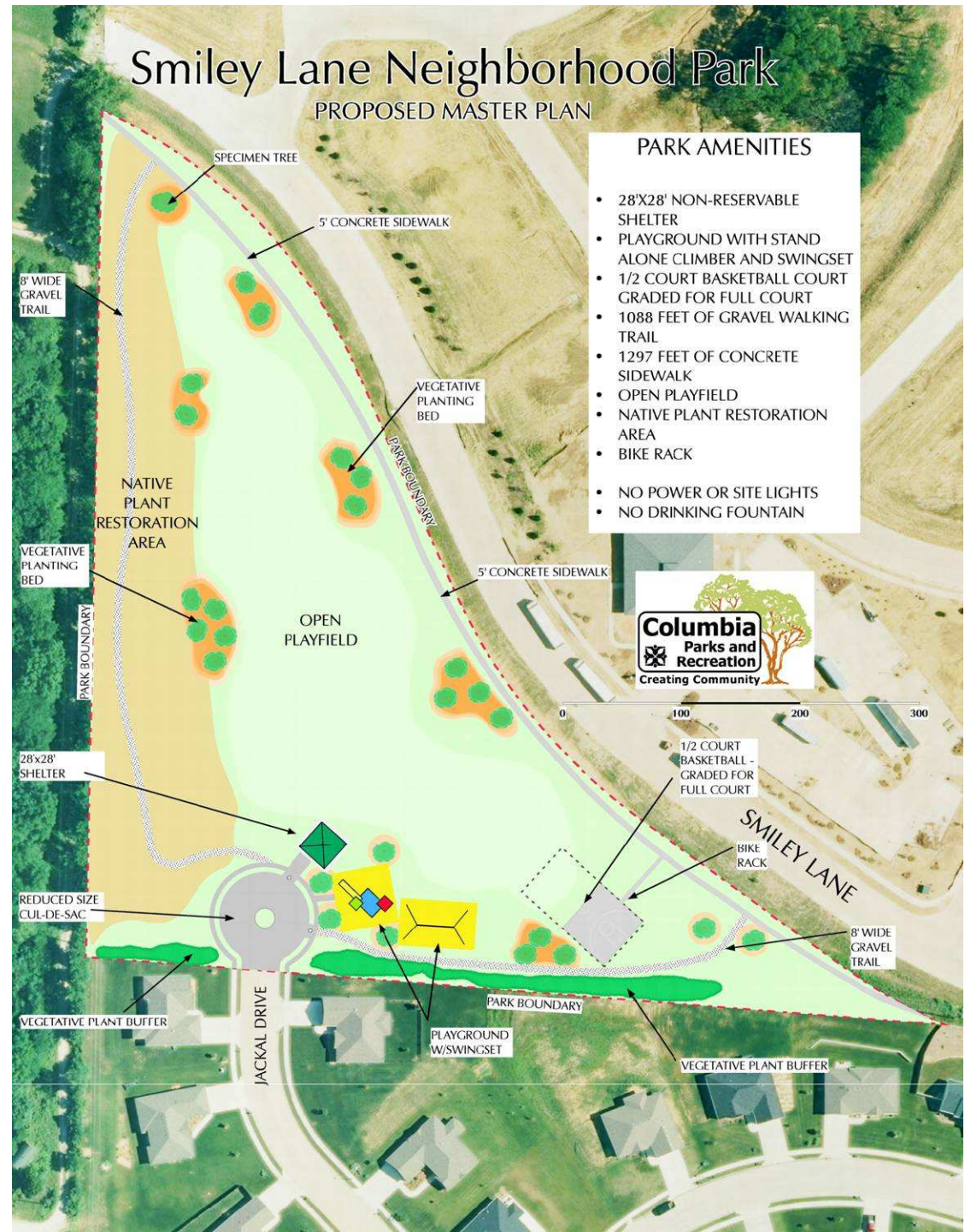
8. Council Agenda Items

- Smiley Lane Neighborhood Park



8. Council Agenda Items

- Smiley Lane Neighborhood Park





9. Capital Project Update





Blue Ridge Elementary New Playground





PMC Improvements Greenhouse Addition



Heating and Lighting Installation



Douglass Pool Structural Repair of Pump Room Ceiling





Atkins Park Parking Lot Curbing



R



Atkins Park Walkway to Fields





Atkins Park Black Field Scoreboard





Atkins Park Black Field Bleacher Pad





Atkins Park Ballfield Lighting Completed





T.R.I.M. II Grant Award

- Missouri Department of Conservation Trim Cost-Share Program
- \$5500
- Two staff members will attend Municipal Foresters Institute in Ridgeland, SC sponsored by the Society of Municipal Arborists



LOW Golf Course Restroom Complete Walkways in progress





LOW Golf Course Estate Fencing at #2





Rainbow Softball Center

Pitching Machine Installation





Grant-Funded Recycling Program

- Mid-Missouri Solid Waste Management District
- \$4,721
- Purchased 60 recycling bins



Nifong Park Lake Dam Reconstruction





10. Commission Comments

11. Staff Comments

12. Public Comments

A scenic view of a park with a pond, trees, and a gazebo. The image shows a calm body of water in the foreground, reflecting the surrounding greenery and a clear blue sky. In the middle ground, there is a well-maintained lawn with several trees, some of which have vibrant autumn foliage in shades of orange, yellow, and red. A white gazebo with a dark roof is situated on the lawn. The background is filled with more trees and a clear blue sky.

Adjourned

Creating Community through People, Parks and Programs