

2013 Parks, Recreation & Open Space Master Plan





2013 Parks, Recreation & Open Space Master Plan

- Work began with kick-off meeting Oct 18, 2011
- Record number of citizen input
 - **1,539 completed citizen surveys**
 - **58 park user/partner meetings (325 citizens)**
- 2 new chapters
 - **P&R Strategic Plan & Accomplishments**
- Visioning goals and strategies
- Main goal is to identify needs for our department for the next 10 years.



Needs Identification

1. Standards
2. Trends
3. Public Input
4. Staff Analysis





Facility Standards

Comparison of Columbia's outdoor facilities to the Missouri Department of Natural Resources "Outdoor Recreation Development Goals."

Significant Deficiencies

Trails

Horseshoe Courts

Softball/Baseball Fields

Football Fields

Picnic Tables

Picnic Shelters

Campsites

Swimming Pools



Outdoor Recreation Facilities--Deficits

Facility	Deficit	Facility	Deficit
Equestrian Trail	24.07 miles	Picnic Tables Picnic Shelters	453 tables 33 shelters
Walking Trail (gravel loop trails)	12.44 miles	Swimming Pools	6 pools
Nature Trail (natural or mowed trails)	12.87 miles	Softball/Baseball Football Fields	35 diamonds 24 fields
Exercise Trail (trails w/equipment)	28.07 miles	Campsites	33 sites
Bicycle Trail (trails developed using AASHTO guides-MKT)	14.18 miles	Horseshoe Courts Shuffleboard Cts Basketball Cts	25 courts 26 courts 4 courts
Multi-Purpose Trail (hard surface)	25.84 miles		

Total trail deficit: 117.47 miles



Outdoor Recreation Facilities Standards

Facility	Deficit	Facility	Surplus
*Soccer fields	1 field	Playgrounds	0
Ice Rink	1 rink	Golf Courses	4 courses
Skate Park	2 parks	Handball and Racquetball Courts	3 courts
		Tennis Courts	13 courts
		Hard Surface Multi-Use Courts	39 courts
		Playfields	43 playfields

*Note: When calculating total number of soccer fields in Columbia, 11 school fields are included.



Trends

- Chapter has 3 sections
 - I. National trends that impact P&R Dept
 - II. Municipal recreation policy & operating trends
 - III. Facility and program trends related to P&R Dept.



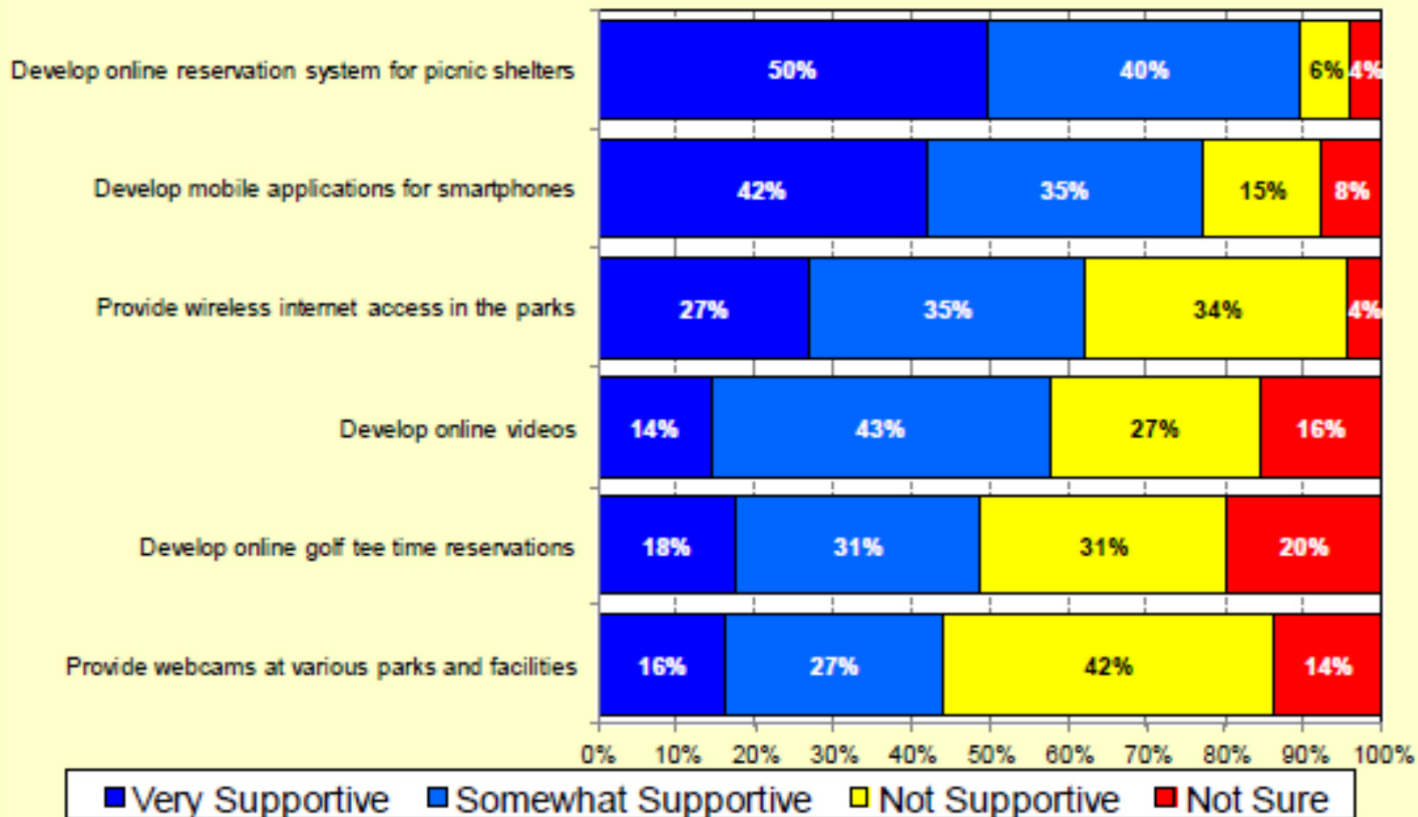
National Trends

- Adult & Childhood Obesity
 - **Approx 10% of BoCo children are overweight or obese.**
- Ethnic Diversity
 - **2035: 1/3 of American youth U18 will be Latino**
- Economic Climate
 - **Columbia's 22.9% poverty rate is higher than both state and national rate**
- Bicycles & Non-Motorized Transportation
 - **Bicycle trips in Columbia increased 26% 2007-2010**
- Technology & Social Learning



From Park User Survey

Q20. Indicate level of support for various actions to improve *technology* within the parks and recreation system
by percentage of respondents



Source: 2011 Park User Survey

Policy Trends

- Power-Driven Mobility Devices on Trails & Parks
- Tobacco-Free Zones in Parks & Playgrounds



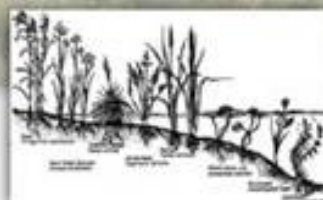


Policy Trends

- Sustainable Design & Management Practices
- Special Events Increasing
- Urban Wildlife and Habitat Management



3M URBAN ECOLOGY RESTORATION PROJECT



FUNDING PROVIDED BY:





P&R Facility & Program Trends

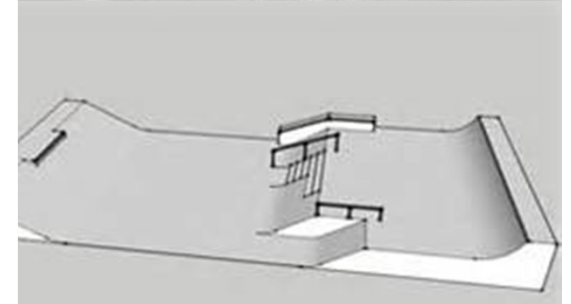
- Sports Tourism Facilities
 - Large, quality destination site complexes
 - Range from \$9-\$33 million price tag
- Waterparks
- Generate revenue for aquatic programs
- Bike Parks & Mountain Bike Facilities
- Outdoor Adult Gyms
- Nature Playgrounds/Nature Explorer Classrooms





P&R Facility & Program Trends

- Community Gardens
- Sensory Gardens
- Skate Spots
- Bocce Courts
- Dog Parks
- Shade Structures
- Artificial Turf Fields
- Synthetic Playground Surfaces
- Archery
- Lacrosse

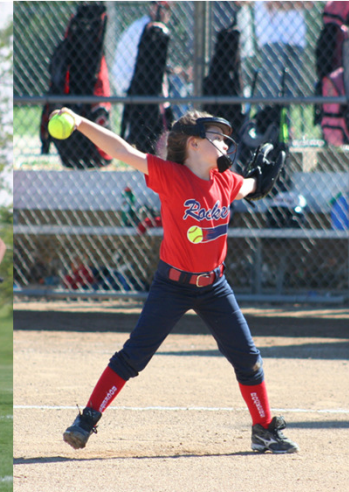




Trends

B. Participation Trends

- 1. National Sporting Goods Association**
- 2. Parks and Rec Program Participation**





National Sporting Goods Association

Table 1: National Sporting Goods Association

Sport <i>(Ranked in order of highest participation)</i>	2011 Total (million)	Percent Change from 2010	2007 Total (million)	2003 Total (million)	2011 vs. 2001 Sports with over 15% change in participation
Exercise Walking	97.1	1.3%	89.8	79.5	36.3%
Exercising with Equipment	55.5	0.3%	52.9	48.6	28.9%
Swimming	46.0	-11.4%	52.3	47.0	-16.0%
Camping (vacation/overnight)	42.8	-4.3%	47.5	51.4	NA
Aerobic Exercise	42.0	8.9%	34.8	28.0	73.0%
Bicycle Riding	39.1	-1.6%	37.4	36.3	NA
Hiking	39.1	3.8%	28.6	25.0	49.9%
Running/Jogging	38.7	8.9%	30.4	22.9	57.6%
Bowling	34.9	-10.6%	43.5	39.4	NA
Workout at Club	34.5	-4.8%	36.8	29.5	30.5%



Trends

B. Participation Trends

1. National Sporting Goods Association

2. Parks and Rec Program Participation

- a. Adult Sports – Steady
- b. Youth Sports – Programs decreasing. Field rentals increasing (competitive)
- c. Golf – Recovering
- d. Special Events, Community Recreation, Life Enrichment, Special Olympics – Increasing
- e. ARC – Increasing
- f. Pools – Weather dependent



Public Input

- Record number of citizen input
 - **1,539 completed citizen surveys**
 - **58 park user/partner meetings (325 citizens)**
- Random Citizen Survey: March-April 2010
 - **753 surveys returned**
- Park User Survey: November-December 2011
 - **786 surveys returned**



Executive Summary

– Random Citizen Survey

Major Findings

- **Usage of park system is high with excellent satisfaction**
 - 87% of households use parks**
 - 95% rate conditions as excellent or good**
 - Walking, hiking and biking trails most visited**



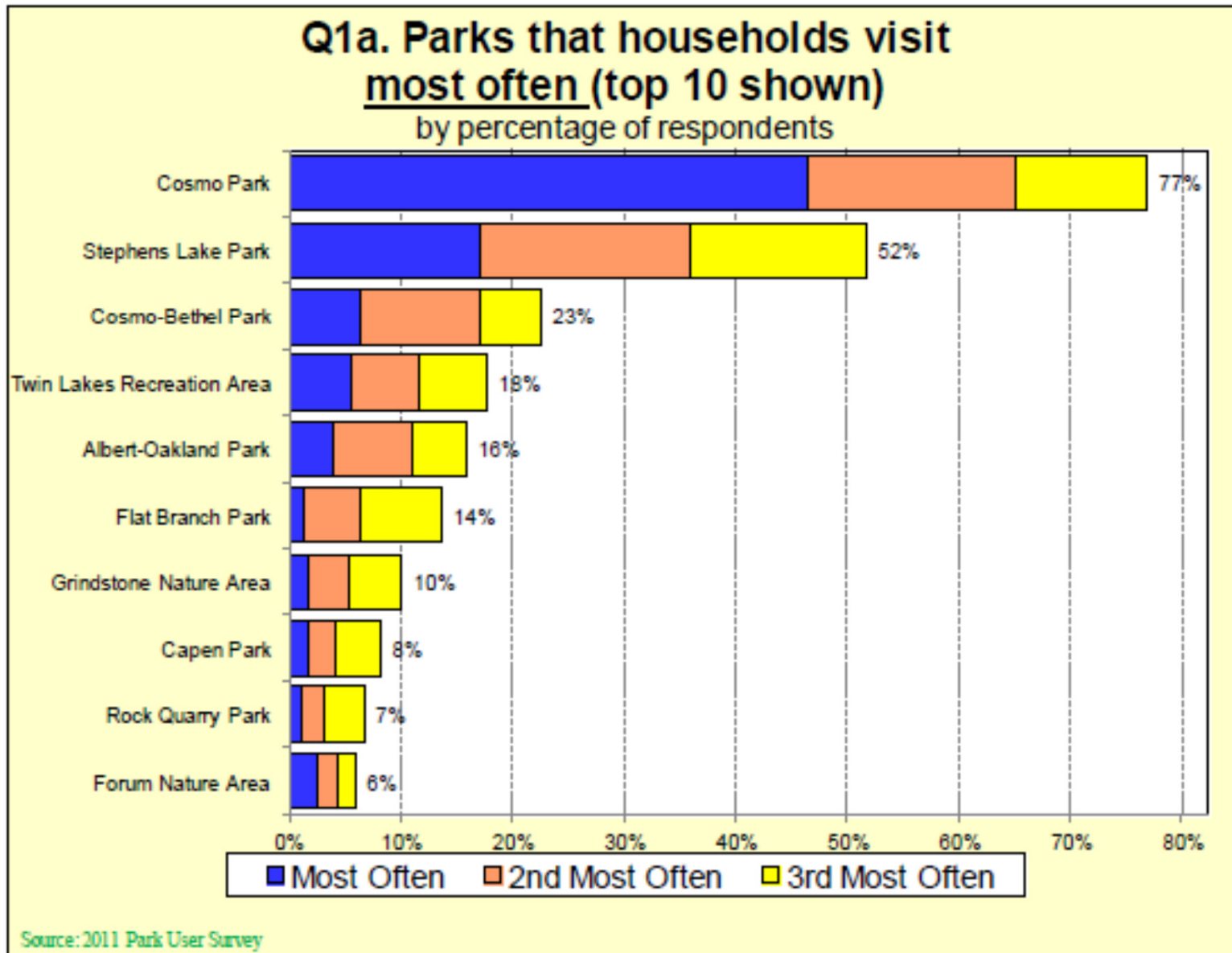
Executive Summary

– Random Citizen Survey

Major Findings

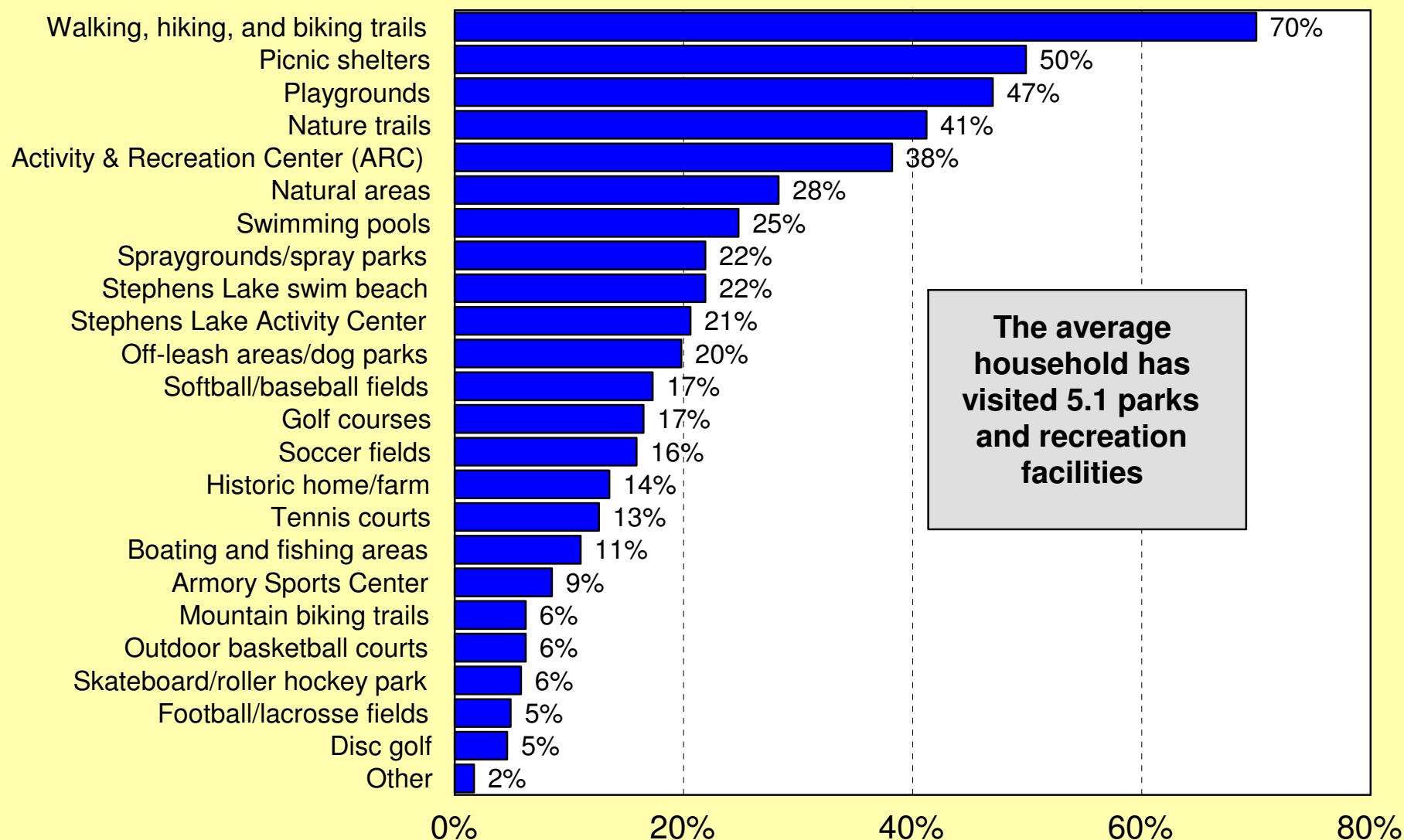
- Most important facilities and programs:
 - walking and biking trails
 - small neighborhood parks
 - large community parks
 - playground equipment and play areas
 - special events/festivals
 - adult fitness and wellness programs
 - nature education programs

Park User Survey



Q3. City of Columbia Parks and Recreation Facilities That Households Have Visited Over the Past 12 Months

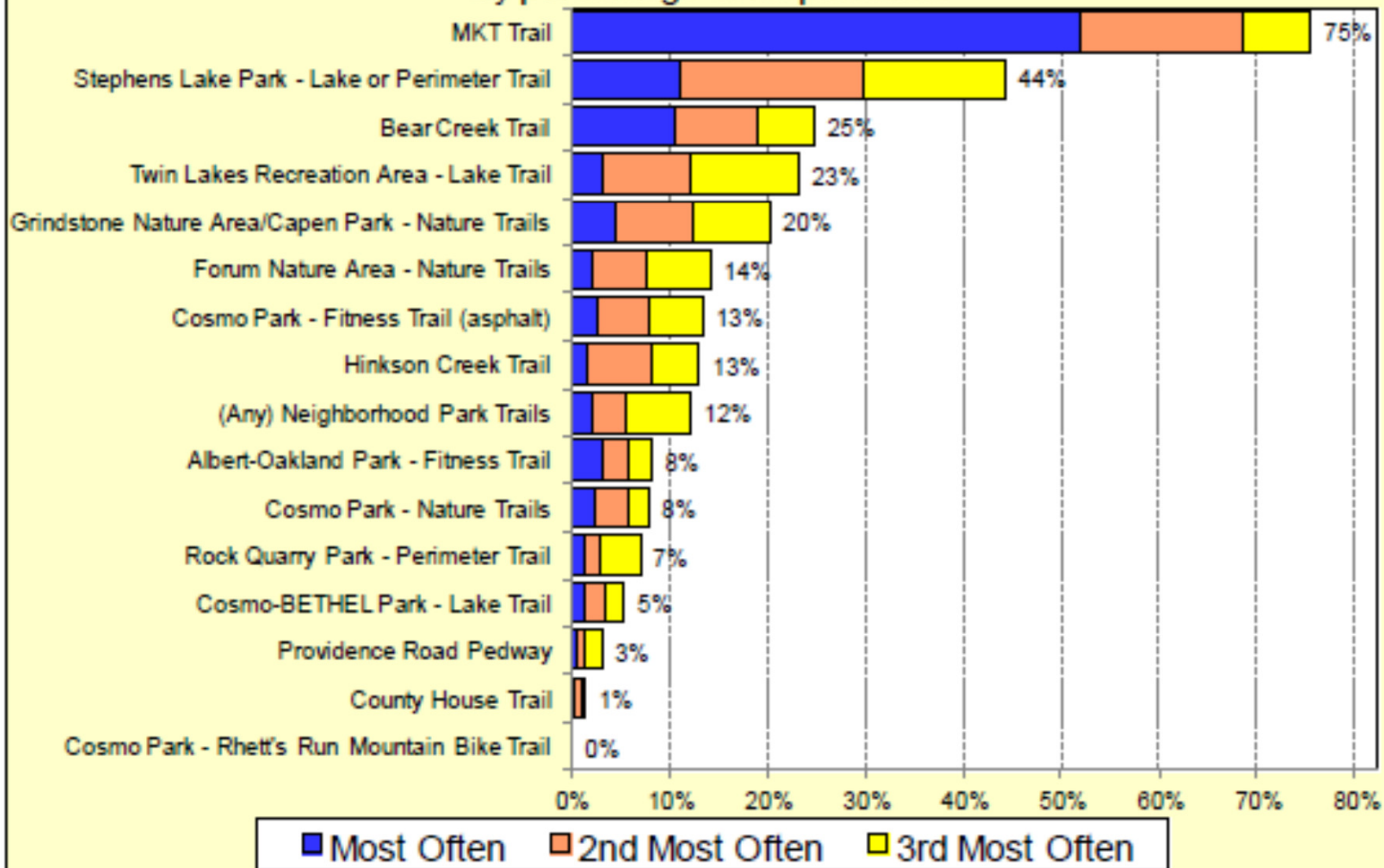
by percentage of respondents (multiple choices could be made)





Q2a. Parks and Recreation trails that households visit most often

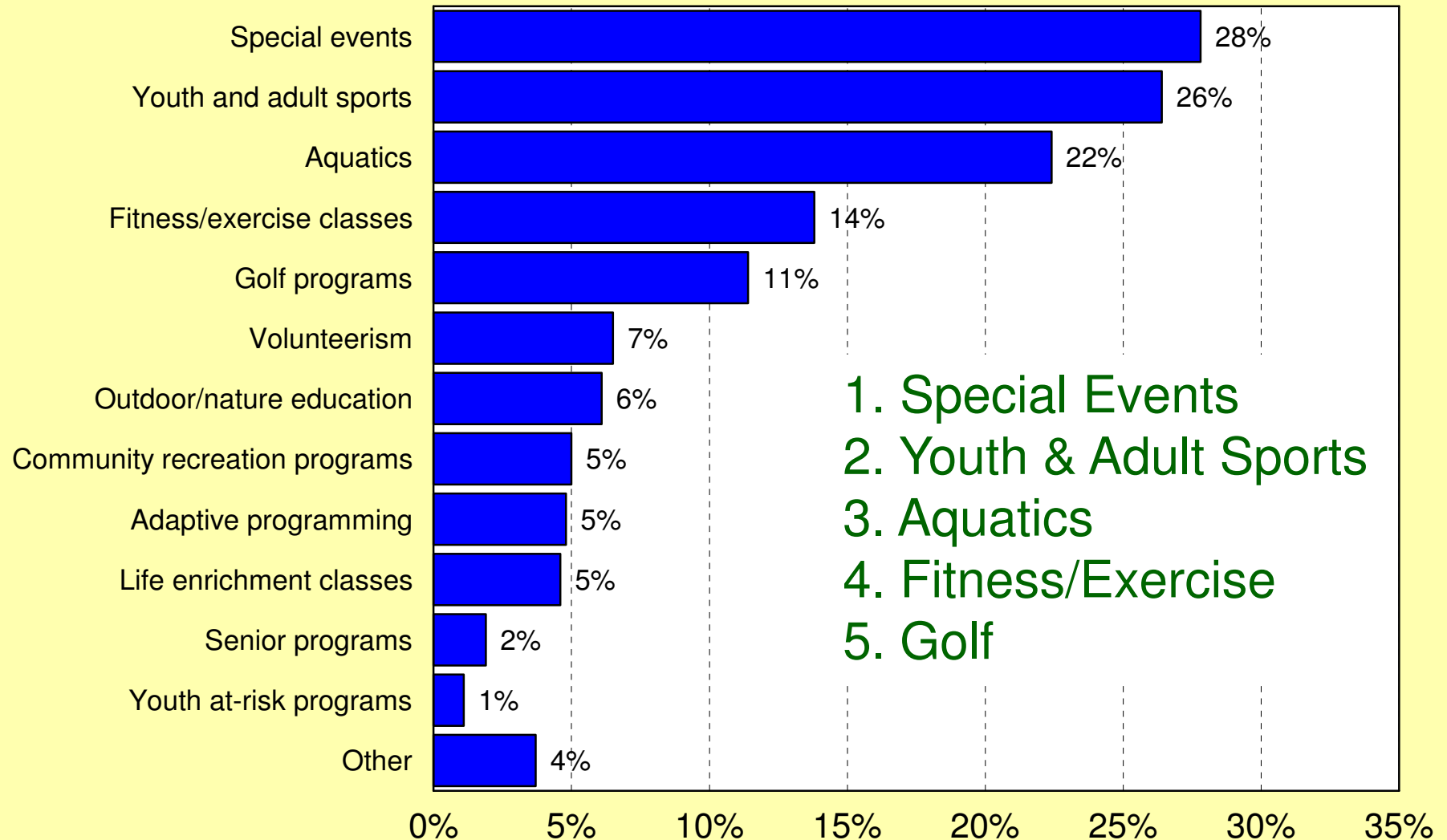
by percentage of respondents



Source: 2011 Park User Survey

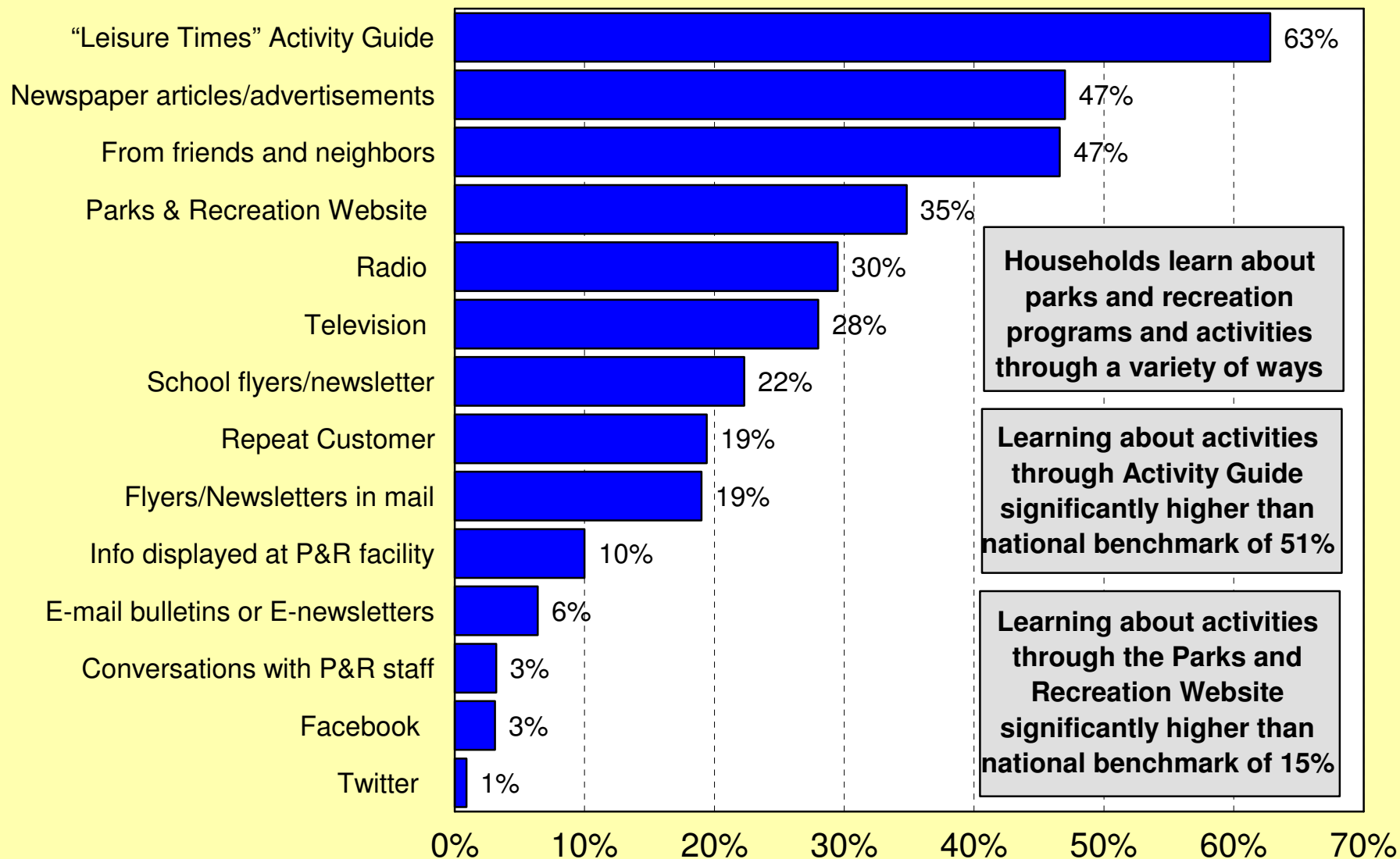
Q7. Recreation Programs Provided by the Columbia Parks and Recreation Department That Households Have Participated in Over the Past 12 Months

by percentage of respondents (multiple choices could be made)



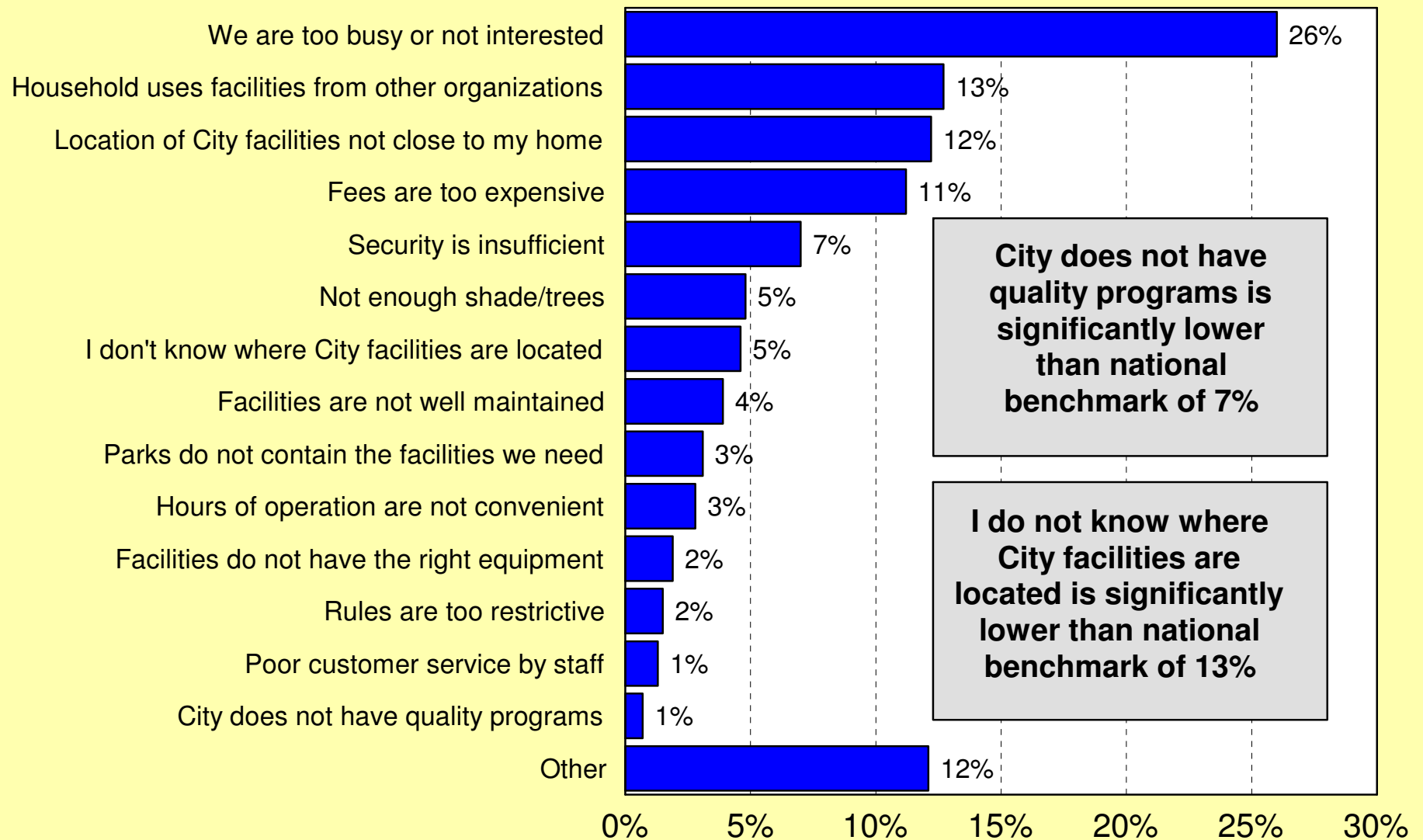
Q14. Ways Respondents Learn About City of Columbia Parks and Recreation Programs and Activities

by percentage of respondents (multiple choices could be made)



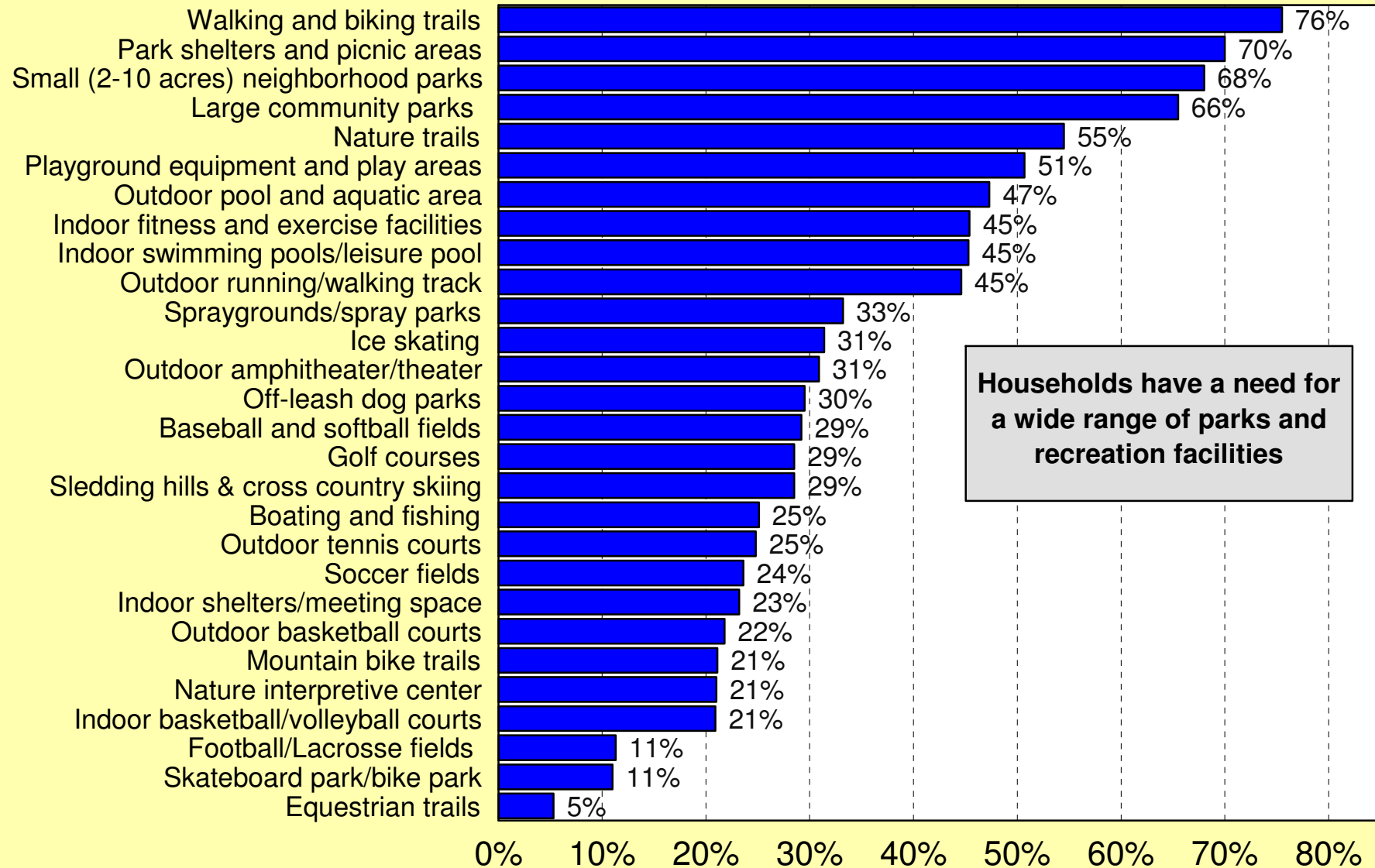
Q5. Reasons That Prevent Households from Using Columbia's Parks and Recreation Facilities

by percentage of respondents (multiple choices could be made)



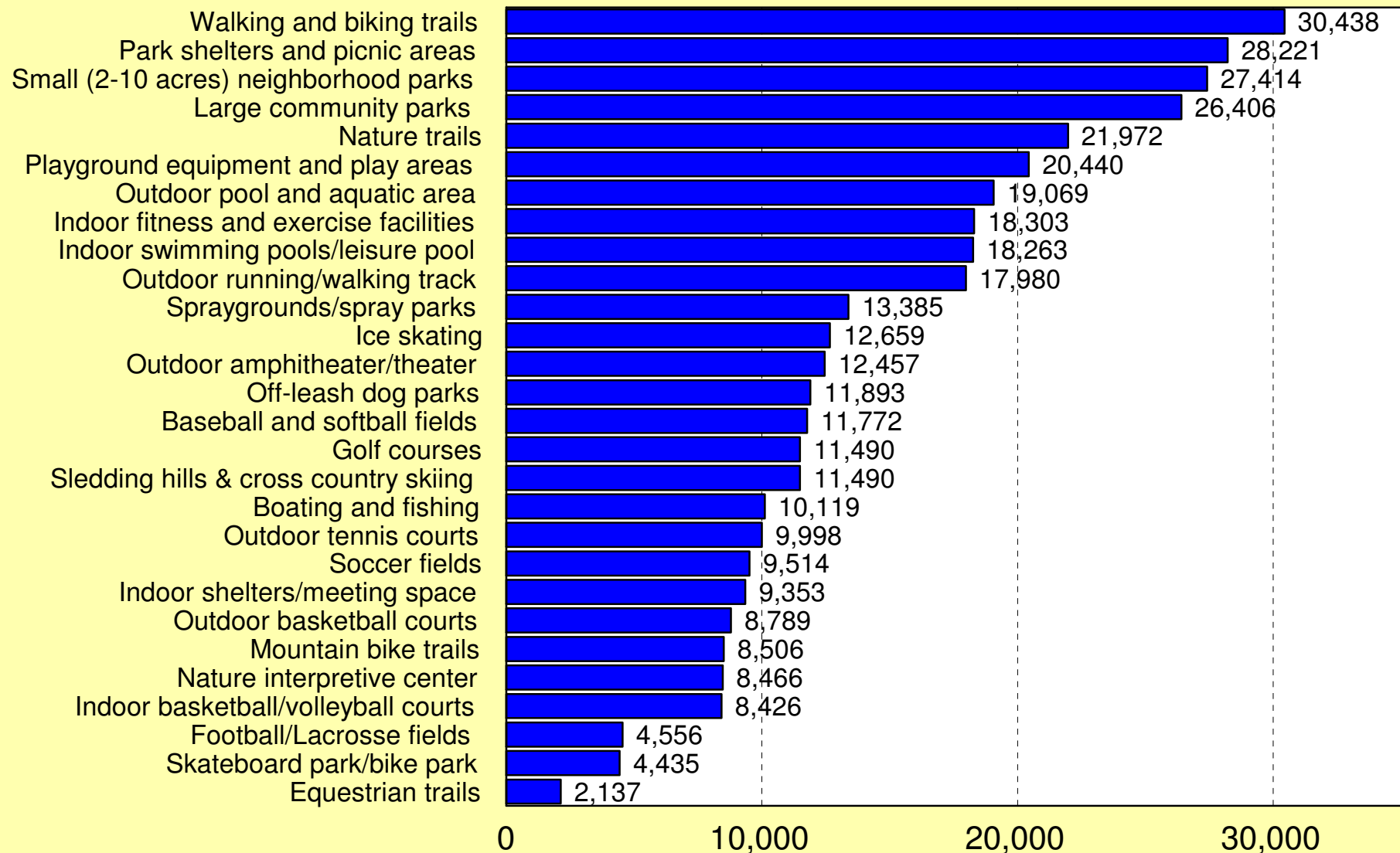
Q9. Households That Have a Need for Various Parks and Recreation Facilities

by percentage of respondents (multiple choices could be made)



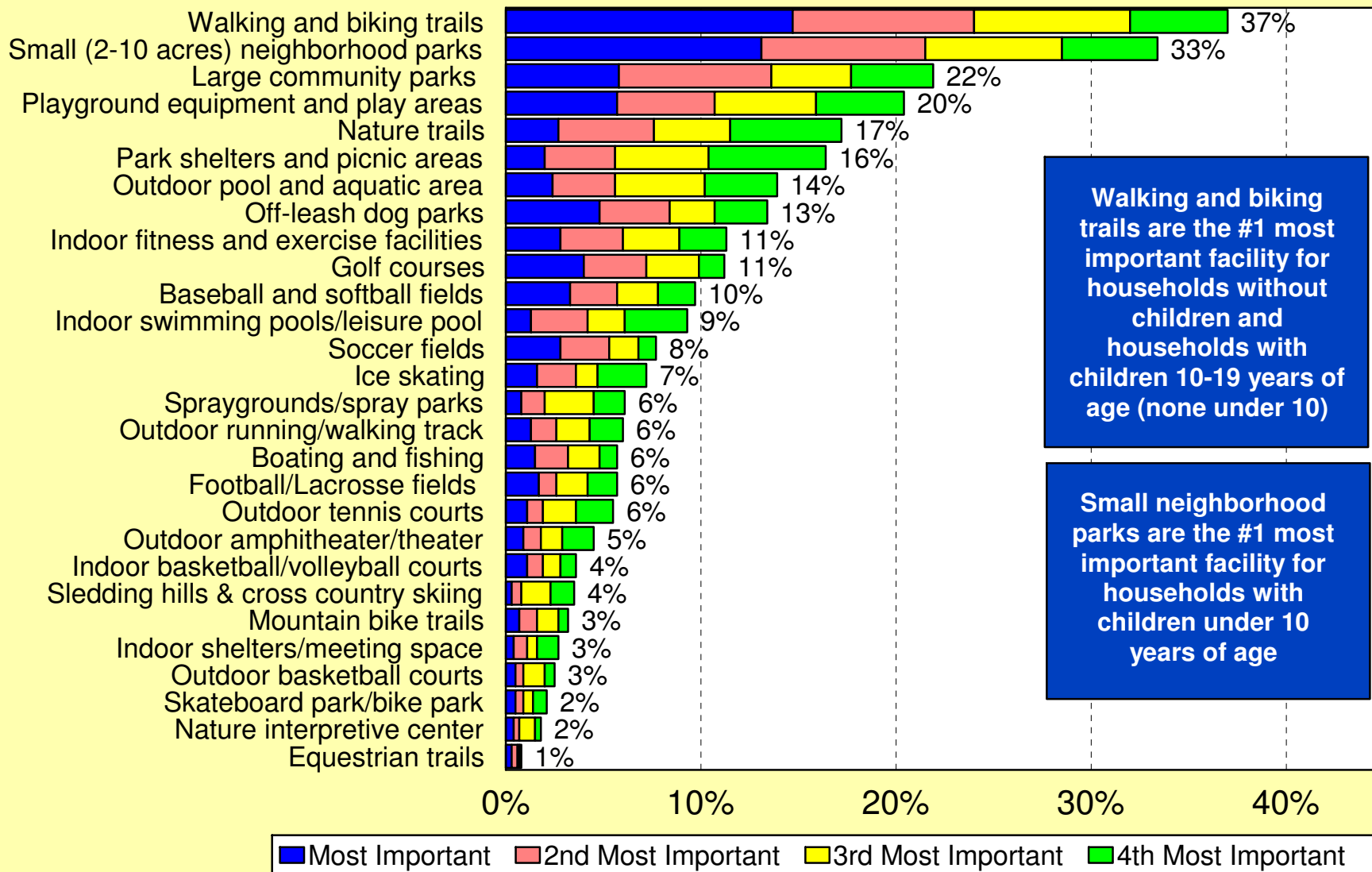
Q9a. Estimated Number of Households in the City of Columbia That Have a Need for Various Parks and Recreation Facilities

by number of households based on 40,315 households in Columbia



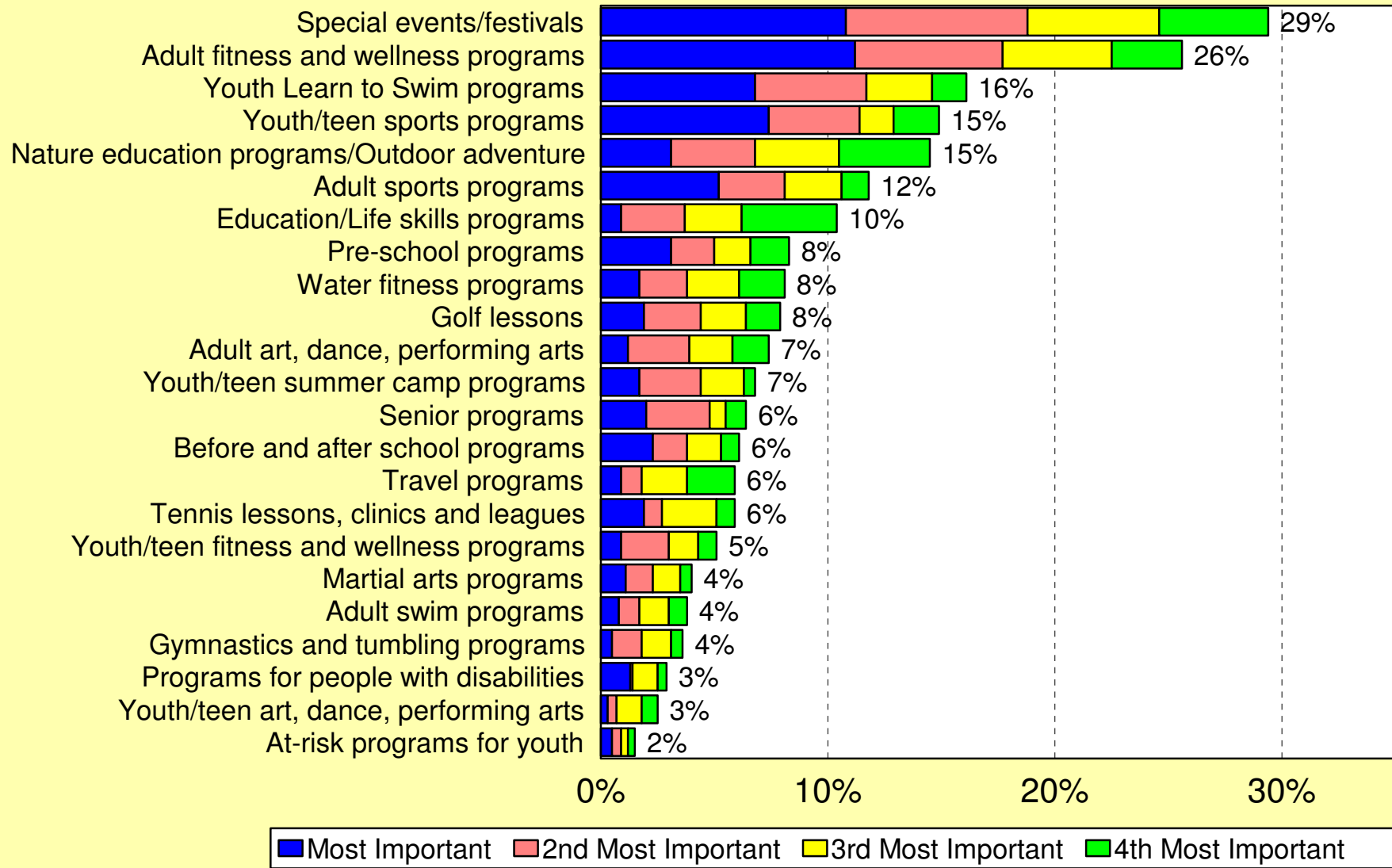
Q10. Parks and Recreation Facilities That Are Most Important to Households

by percentage of respondents who selected the item as one of their top four choices



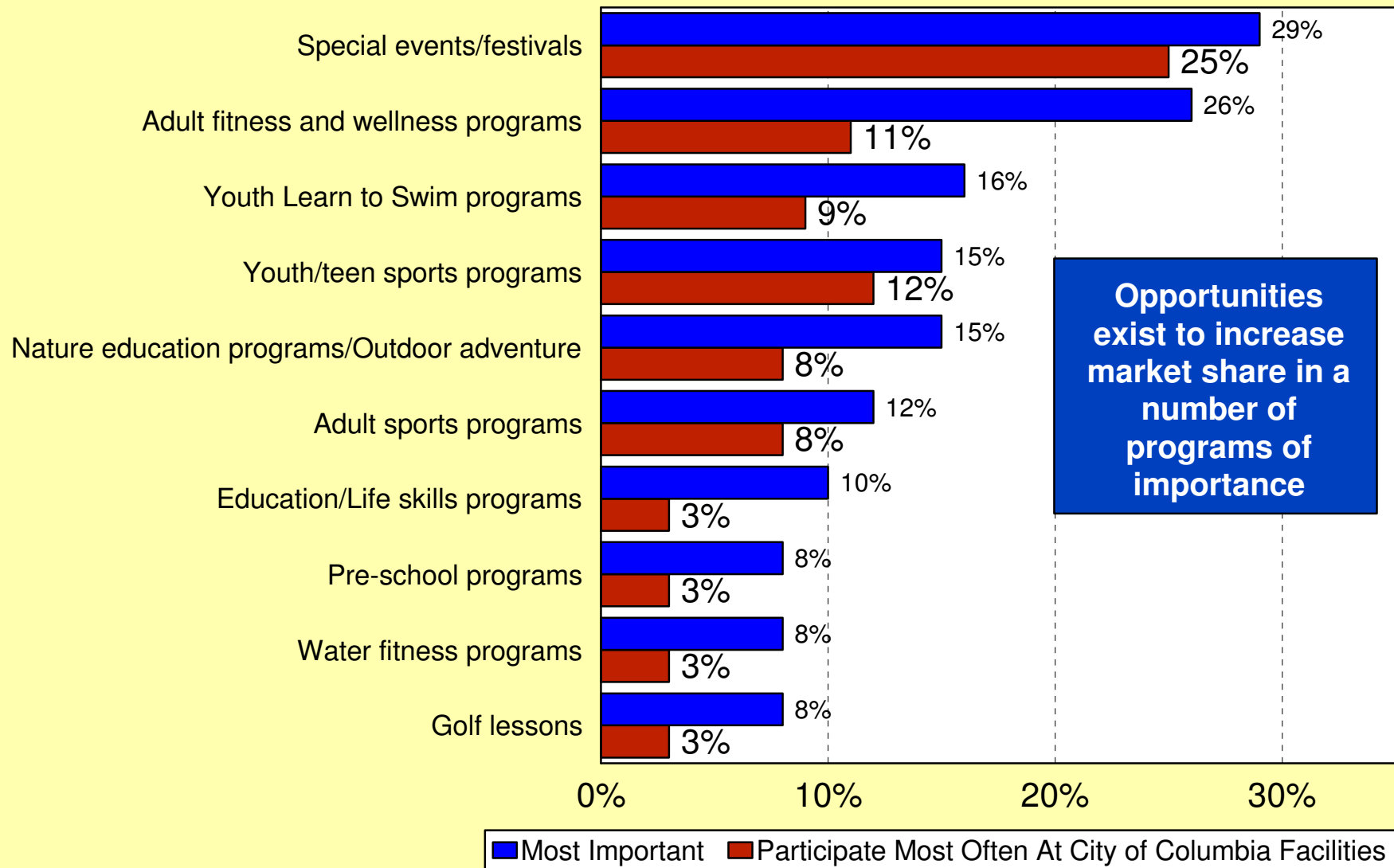
Q12. Recreation Programs That Are Most Important to Households

by percentage of respondents who selected the item as one of their top four choices



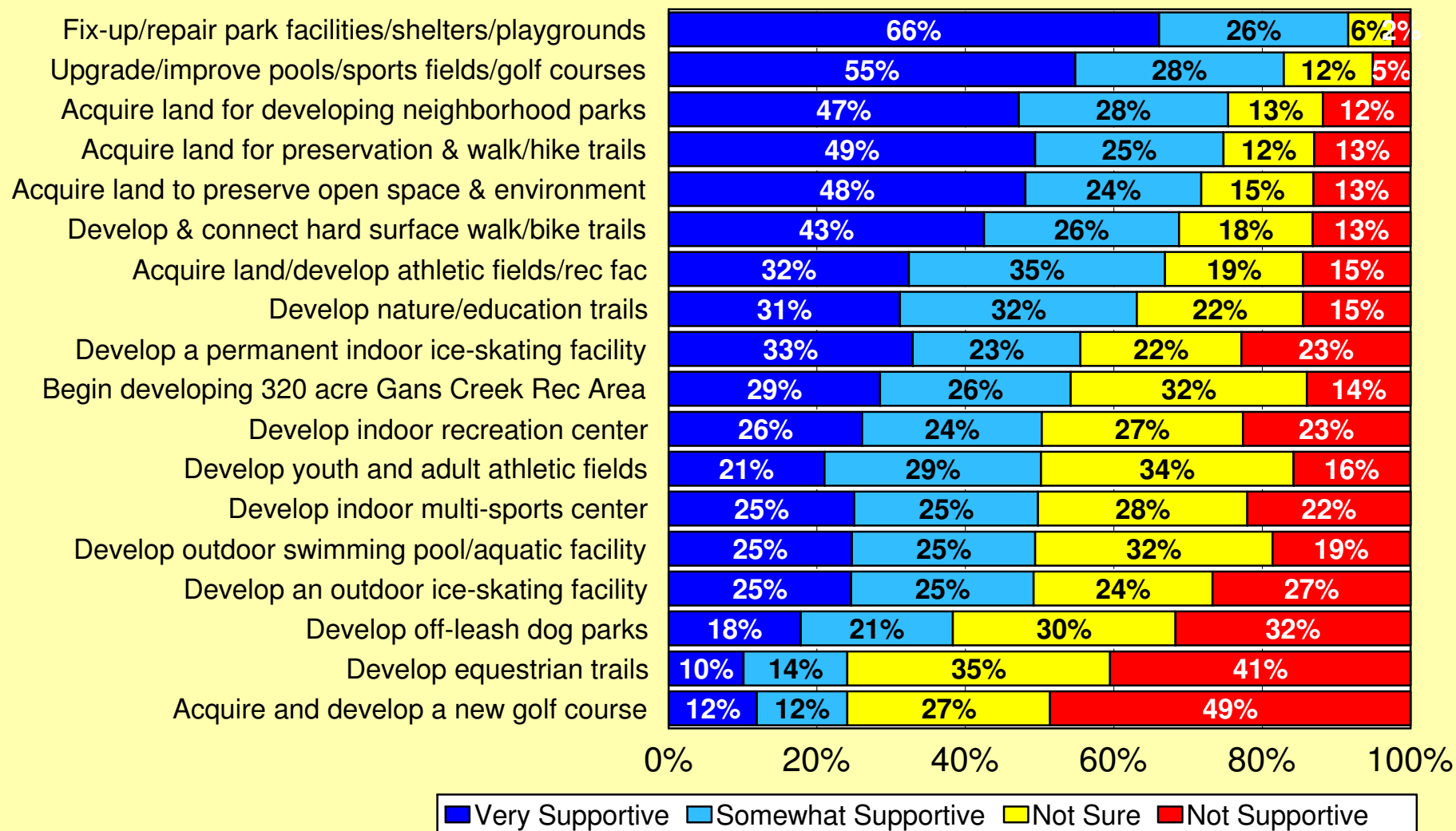
Q12. Recreation Programs That Are Most Important to Households

Q13. Recreation Programs That Households Currently Participate in Most Often at Columbia Parks & Rec Facilities



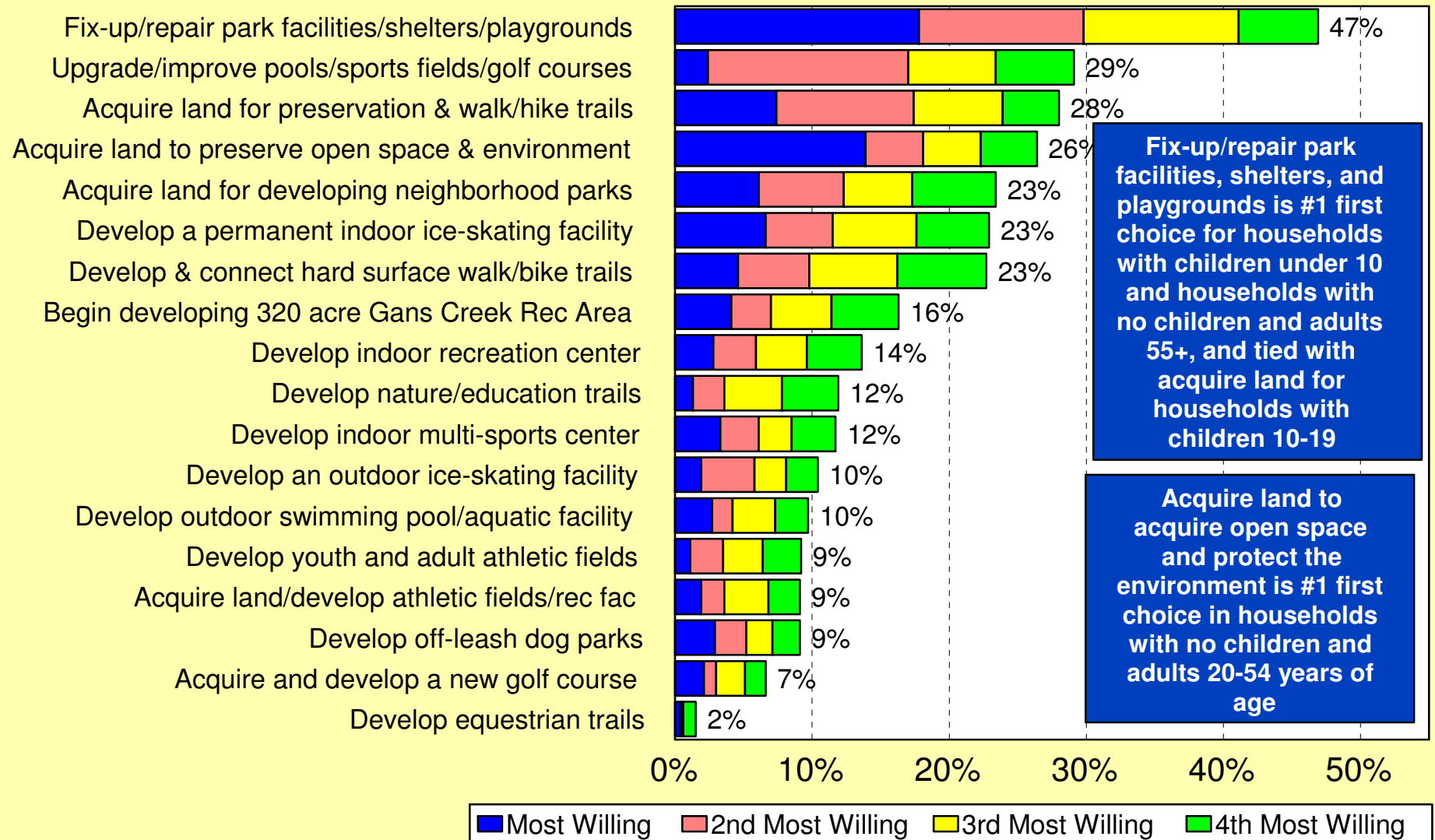
Q15. Level of Support for Various Actions the City of Columbia Parks and Recreation Commission Could Take to Improve the Parks and Recreation System

by percentage of respondents



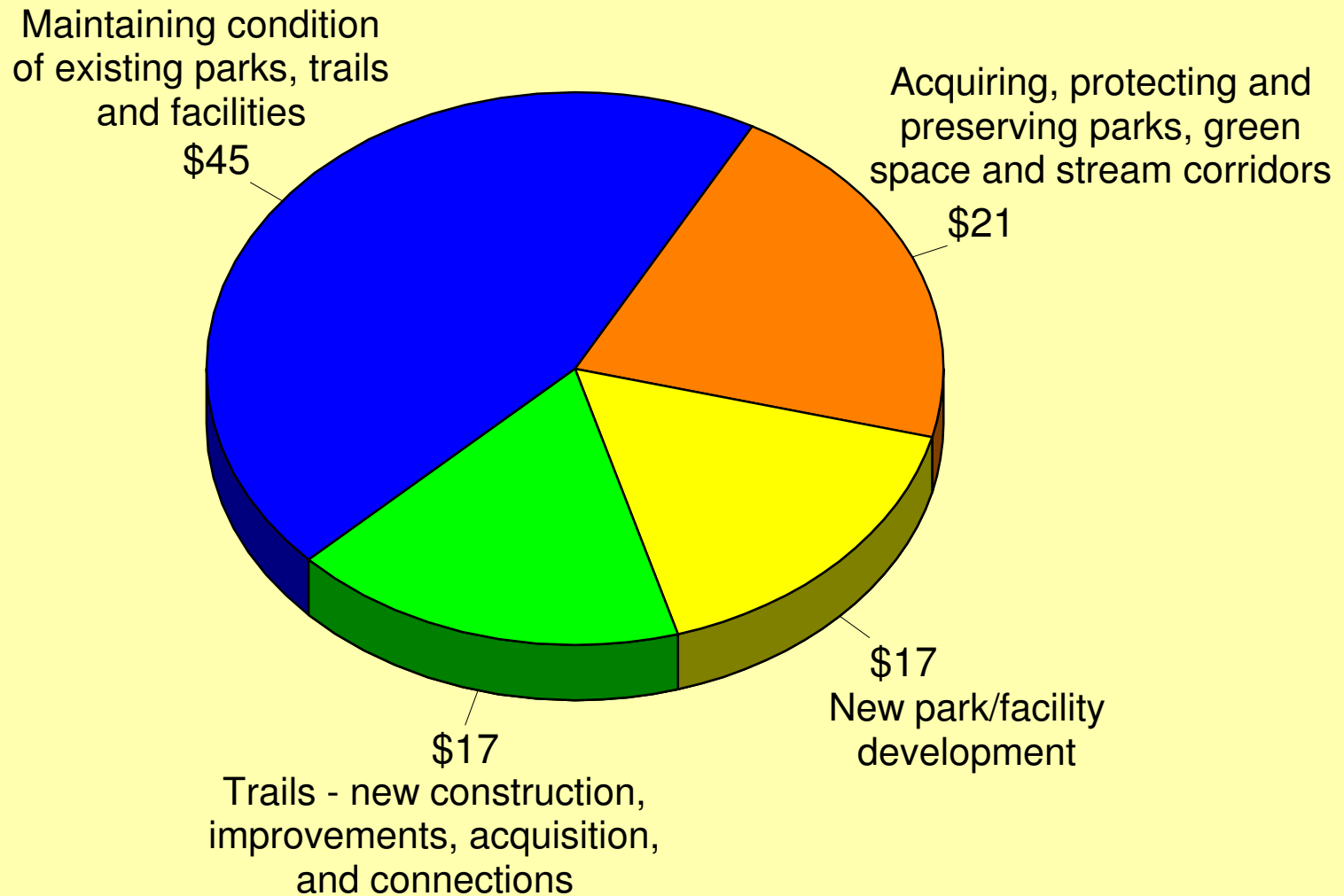
Q16. Actions Respondents Would Be Most Willing to Fund with Their Columbia Parks and Recreation Tax Dollars

by percentage of respondents who selected the item as one of their top four choices



Q21. Allocation of \$100 of the Park Sales Tax

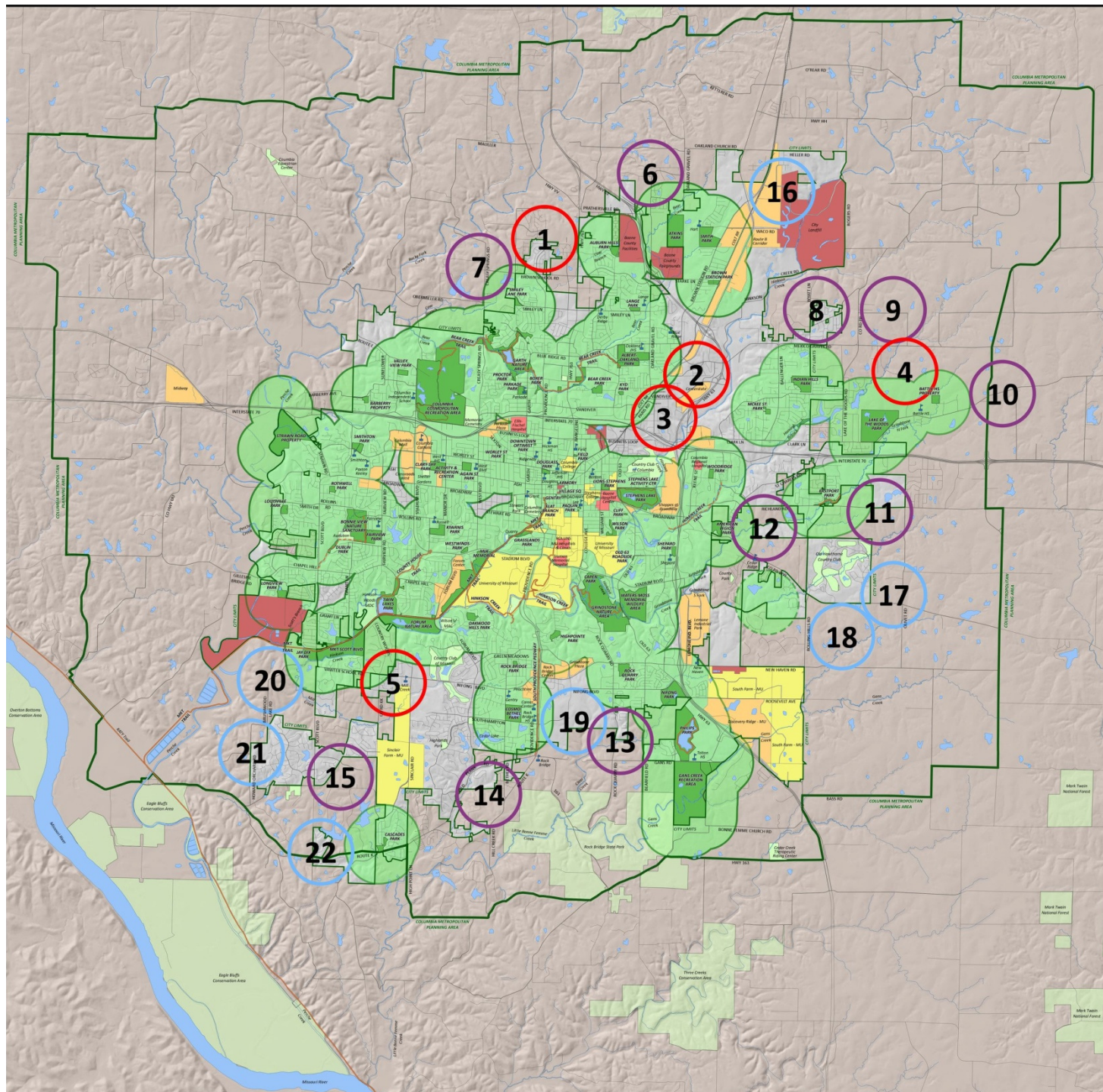
by percentage of respondents


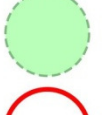
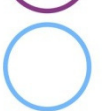





Identified Projects (Needs)

1. Acquisition
 - A. Neighborhood Parks**
 - B. Community Parks**
 - C. Regional Parks**
 - D. Special Purpose Parks**
 - E. Natural Resource Parks**
2. Development
 - A. Existing Parks and Facilities**
 - B. New Facilities**



-  Existing Park 1/2 Mile Radius
-  Scheduled for Acquisition
-  Primary Priority Park Acquisition Service Area
-  Secondary Priority Park Acquisition Service Area
-  Tertiary Priority Park Acquisition Service Area

-  City Limits
-  Columbia Metropolitan Planning Area
-  City Parks
-  University and Colleges
-  Commercial Areas
-  Government and Institutional Property
-  Other Park and Open Space
(Private, County, State and Federal)
-  Existing Trails
-  Trails Under Construction
-  Schools

2013 Neighborhood Parks Plan

Parks, Recreation and Open Space Master Plan

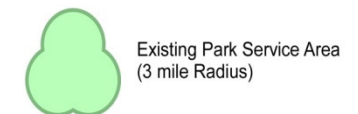
March 15, 2013

1 Mile 1/2 Mile 0 1 Mile North



Existing Community Parks Parks, Recreation and Open Space Master Plan - 2013

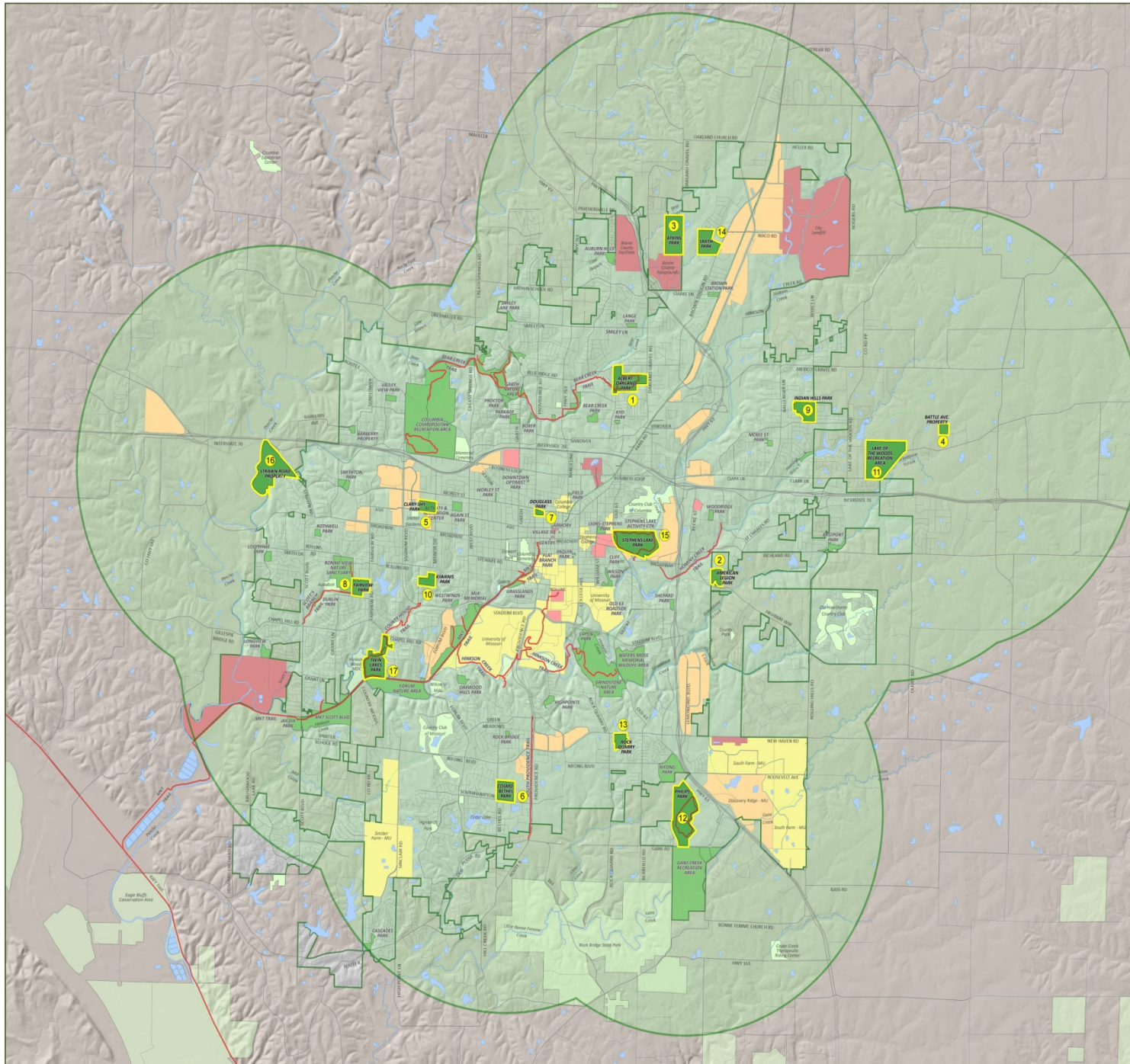
1. Albert-Oakland Park
 2. American Legion Park
 3. Atkins Park
 4. Battle Ave. Property*
 5. Clary-Shy Park
 6. Cosmo-Bethel Park
 7. Douglass Park
 8. Fairview Park
 9. Indian Hills Park
 10. Kiwanis Park
 11. Lake of the Woods Rec Area
 12. Philips Park
 13. Rock Quarry Park
 14. Smith Property - Brown Station*
 15. Stephens Lake Park
 16. Strawn Road Property*
 17. Twin Lakes Rec Area
- * Undeveloped

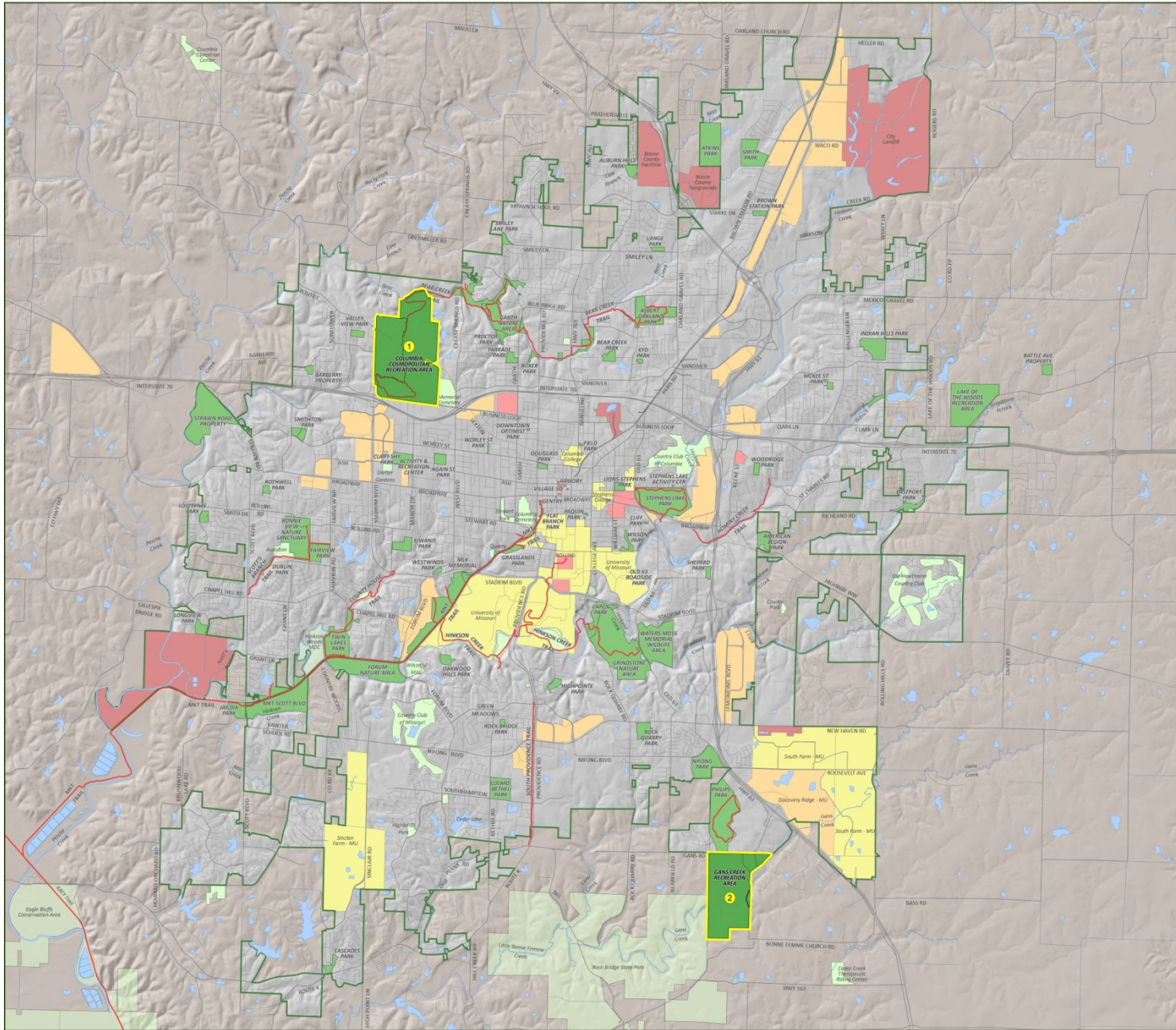


March 15, 2013



1 Mile 0 1 Mile





Existing Regional Parks Parks, Recreation and Open Space Master Plan - 2013

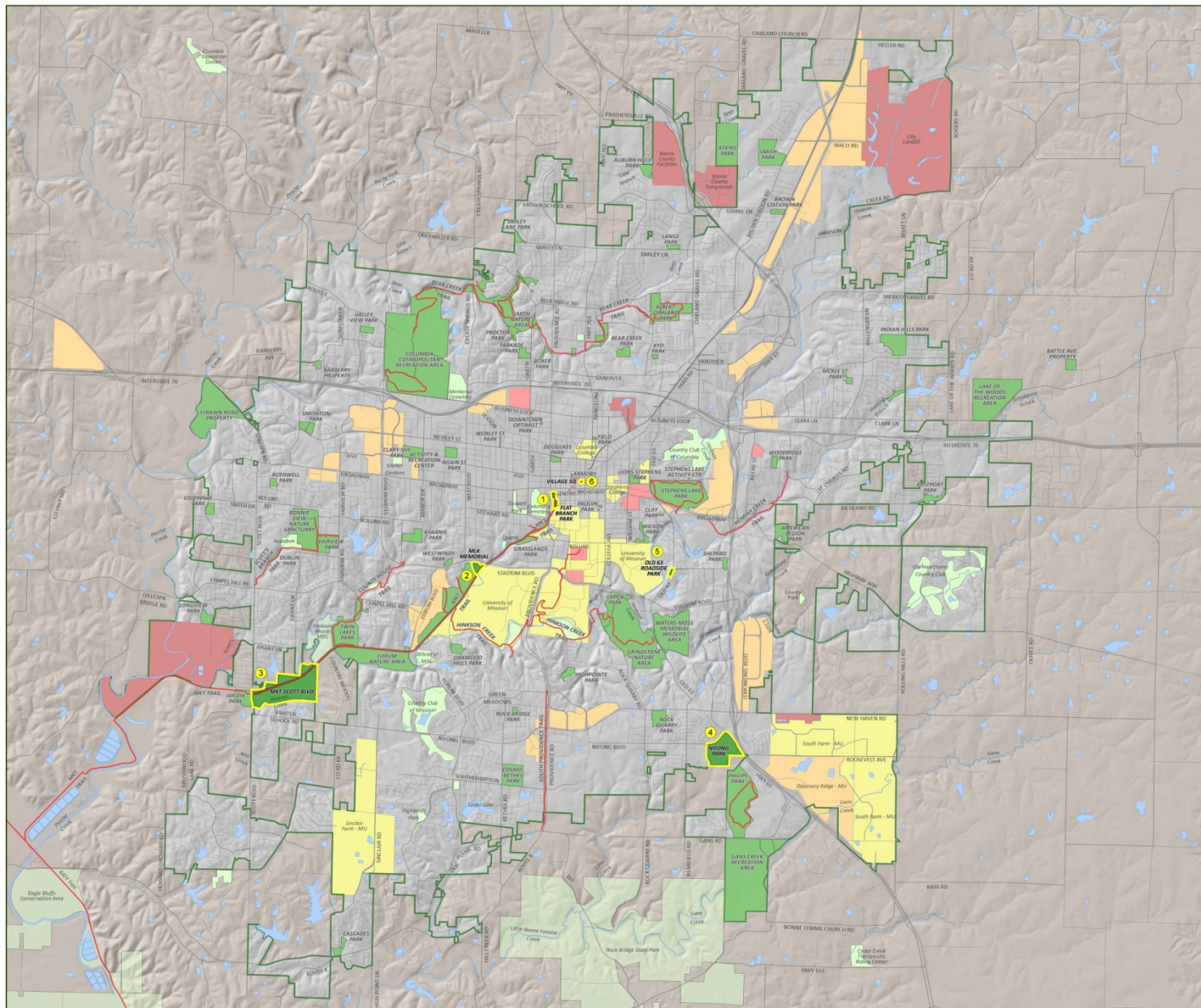
1. Columbia Cosmopolitan Recreation Area
 2. Gans Creek Recreation Area*
- * Undeveloped

March 15, 2013



1 1/2 0 1
Mile Mile Mile





Existing Special Purpose Parks

1. Flat Branch Park
2. Martin Luther King, Jr. Memorial at Battle Garden
3. MKT - Scott Blvd.
4. Nifong Park
5. Old 63 Roadside Park
6. Village Square Park

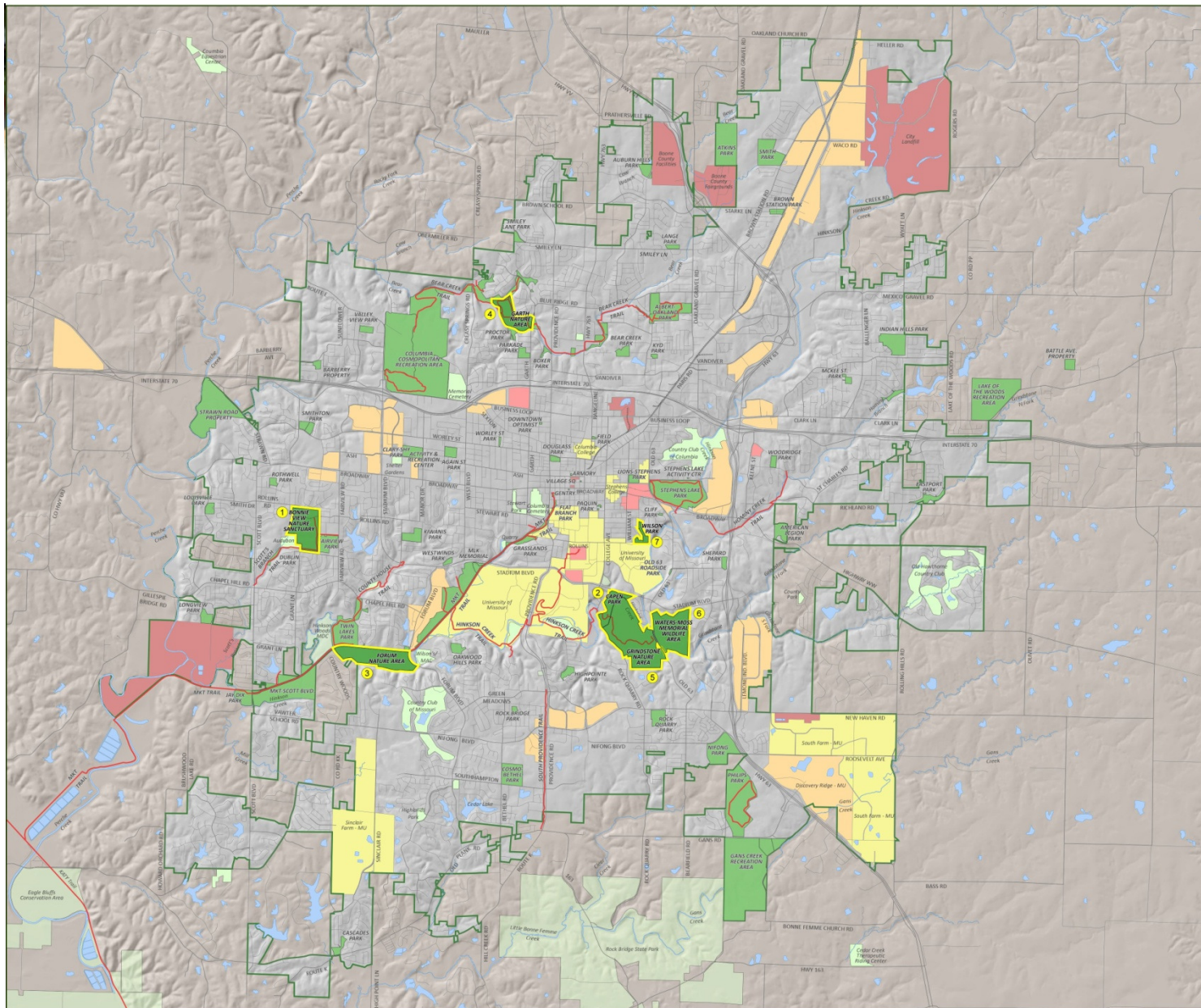
March 15, 2013



Columbia
Parks and
Recreation
Creating Communities



A horizontal scale bar with a black background and white markings. The markings are labeled '1', '1/2', '0', and '1' from left to right. Below the bar, the word 'Mile' is written under the first '1', '1/2', and the final '1'.

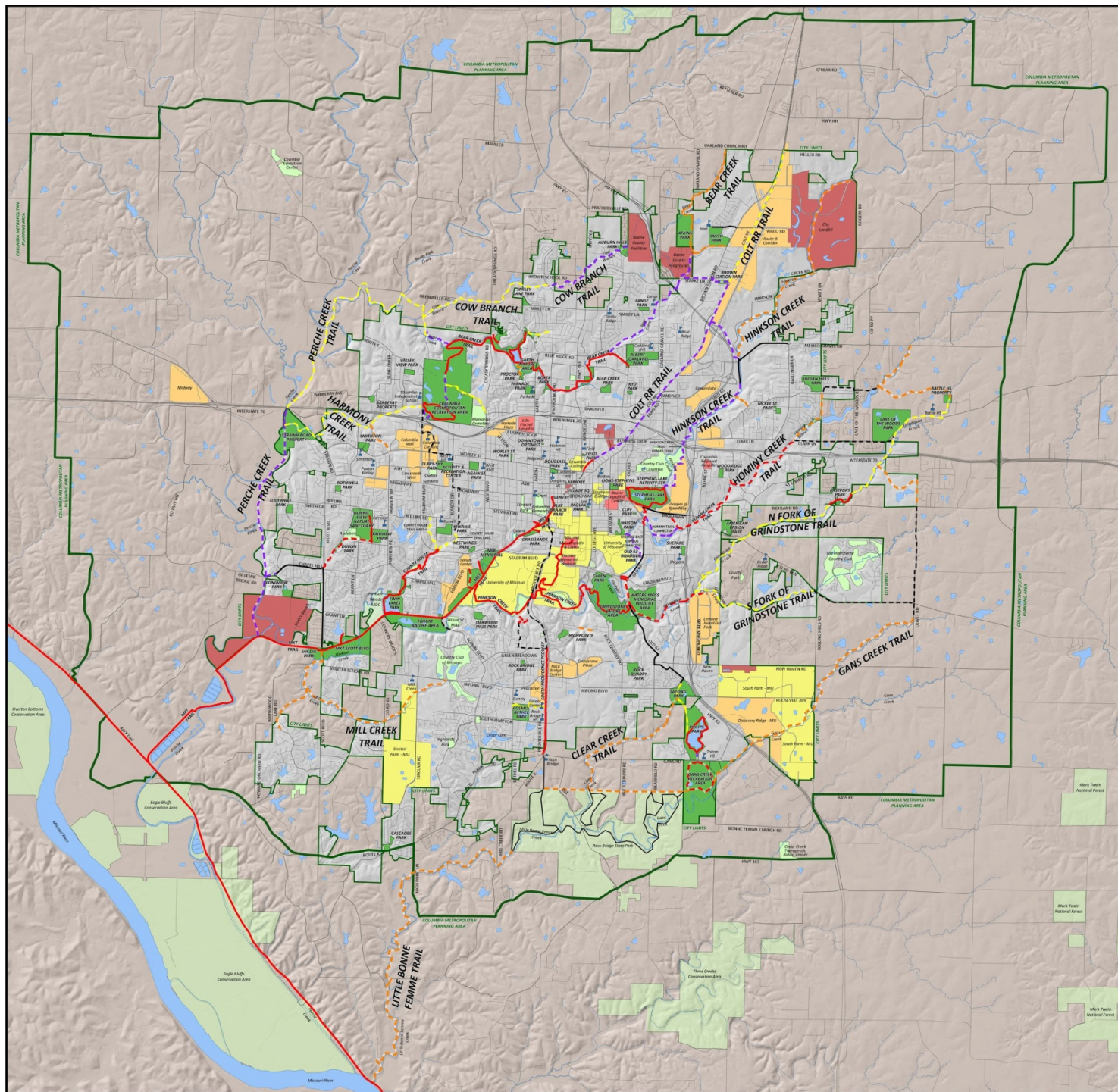


Existing Natural Resource Parks Parks, Recreation and Open Space Master Plan - 2013

1. Bonnie View Nature Sanctuary
2. Capen Park
3. Forum Nature Area
4. Garth Nature Area
5. Grindstone Nature Area
6. Water-Moss Memorial Wildlife Area
7. Wilson Park

March 15, 2013





Existing Trail

Bear Creek Trail
County House Branch Trail
Hinkson Creek Trail
MKT Trail
South Providence Pedway

Funded Trail or Under Construction

Hinkson Creek Trail
Hominy Creek Trail
Scott's Branch Trail
Grindstone Trail

Proposed Primary Trail

Colt RR Trail
Cow Branch Trail
Bear Creek Trail
Hinkson Creek Trail
Hominy Creek Trail
Perche Creek Trail

Proposed Secondary Trail

Colt RR Trail
Cow Branch Trail
Harmony Creek Trail
N Fork of the Grindstone Trail
S Fork of the Grindstone Trail
Perche Creek Trail
County House Branch East & West

Proposed Tertiary Trail

Bear Creek Trail
Clear Creek Trail
Gans Creek Trail
Hinkson Creek Trail
Hominy Creek Trail
Little Bonne Femme Trail
Mill Creek Trail

Other Trails or Pedways (Exist.)

Other Trails or Pedways (Prop.)

- City Limits
- Columbia Metropolitan Planning Area
- City Parks
- University and Colleges
- Commercial Areas
- Government and Institutional Property
- Other Park and Open Space
- (Private, County, State and Federal)
- Schools

2013 Trails Plan

Parks, Recreation and Open Space Master Plan

March 15, 2013

1 Mile 1/2 Mile 0 1 Mile North





Trails Chapter

- Recommended changes to trails chapter is to include pros/cons of all types of trail surfaces.
 - **Natural Surface**
 - **Concrete**
 - **Aggregate stone**
 - **Wood fiber**
 - **Asphalt**
 - **Wood**
 - **Aggregate stone**



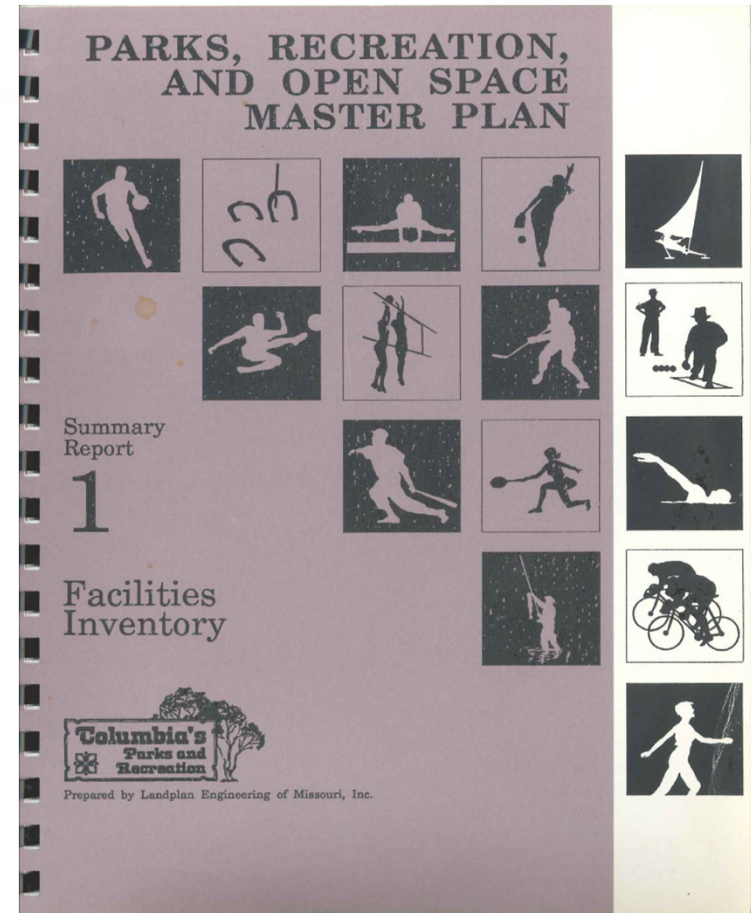
How Many Parks are Needed?

- National standards are disappearing.
- Focus is on specific community demands compared to the existing level of services offered.
- Consideration is based:
 - **Areas not served**
 - **Barriers to service (ie, major roads)**
 - **Proximity of private or other public lands**
 - **Partnerships (Public Schools, MDC, Columbia College, etc.)**



Park Acres – 1994

- Columbia Population: 74,072
- Park Acres: 1,839.7
- **25 acres/1000 population**





Park Acres – 2002

- Columbia Population: 88,291
- Park Acres: 2,094
- **24 acres/1000 population**





Park Acres – 2013

- Columbia Population: 116,843
- Park Acres: 3,172
- **27 acres/1000 population**
- 1,078 ac. Growth Includes:
 - Southeast Regional Park: 460 acres
 - Waters-Moss Transfer: 110.3 acres
 - Battle High School property: 30.19 acres





Park Acres – 2022 Projection

- Columbia Population: 145,921 (2.5% annual growth)
- Park Acres: 3,172 (same as 2013)
- **22 acres/1000 population**
- To Meet 2013 Ratio:
 - **Need to acquire 767 acres to meet 2013 ratio of 27 acres per 1,000 population.**





Recommended Capital Improvements

- Existing Facilities
 - All parks evaluated for improvements
 - Three Categories
 1. Repair
 2. Renovate
 3. Replace

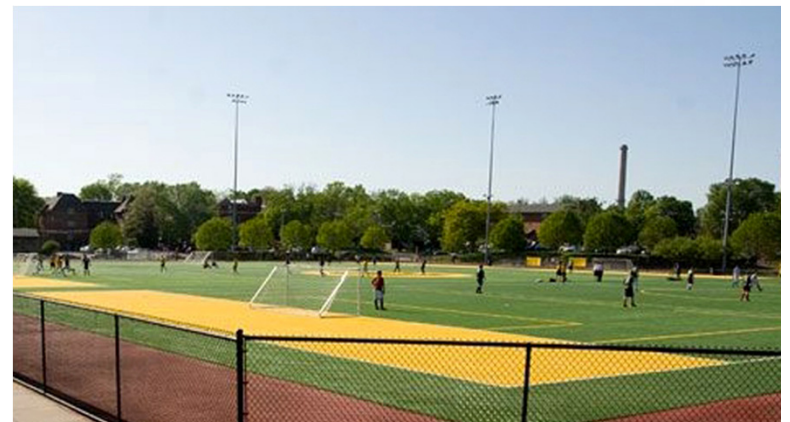


Recommended Capital Improvements

New Facilities

– Tourism Development Facilities

- Campground
- Disc Golf
- Multi-sports Field House
- Synthetic Turf Sports Complex





Recommended Capital Improvements

- **New Facilities – Location**
Undetermined or Multiple Locations
 - **Indoor**
 - Community/Rec Center
 - Pickleball (4-6 courts)
 - Racquetball (2-4 courts)
 - **Outdoor**
 - Archery to Winter Sports Park



Recommended Capital Improvements

Cooperative Joint-Use Facilities

- Indoor competition/recreation pool
- Tennis bubble (4 courts)
- Nature/interpretative center
- Elementary School Gymnasium Expansion



Public Comments to Date

- Add small bicycle campsites along MKT or near there.
- Recommend changing bike polo from 120 x 65 to 145 x 65.
- Revise trails chapter to include pros/cons of all trail surfaces.
- Remove 0.4 mile Bear Creek Connector between Blue Ridge Road (as it turns North) and Providence Road.



Concludes Presentation

- Action Required
- Commission may recommend to Council the plan as presented, or with any number of changes or revisions.
 - **Ex: The Commission recommends to Council that with the proposed changes to the bike polo court size, camping along MKT Trail, and revisions to the Trails Chapter, the 2013 Parks, Recreation and Open Space Master Plan be adopted.**