

Parks & Recreation Commission Meeting

October 18, 2012





Agenda

- | | |
|--|--------|
| 1. Approval of Agenda | Action |
| 2. Approval of Minutes from September | Action |
| 3. Approval of September Monthly Report | Action |
| 4. Grindstone Trail Public Hearing - Motion to Cancel | Action |
| 5. GetAbout/Park Sales Tax Sidewalk and Trail Priorities | Action |
| 6. Rezoning (Margaret Easley Trust request) | Action |
| 7. Rezoning (Dale-Jeanne Powell Trust request) | Action |
| 8. Proposed Master Plan –Jay Dix Station Neighborhood Park | Action |
| 9. Council Items | |
| 10. Capital Project Report | |
| 11. Recreation Services Report | |
| 12. Commission Comments | |
| 13. Staff Comments | |
| 14. Public Comments | |
| 15. Review and Recommendation of Heibel-March RFPs | Action |

****Closed session per §610.021(12) of Missouri Revised Statutes.***

16. Adjourn



5. GetAbout/Park Sales Tax Sidewalk and Trail Priorities

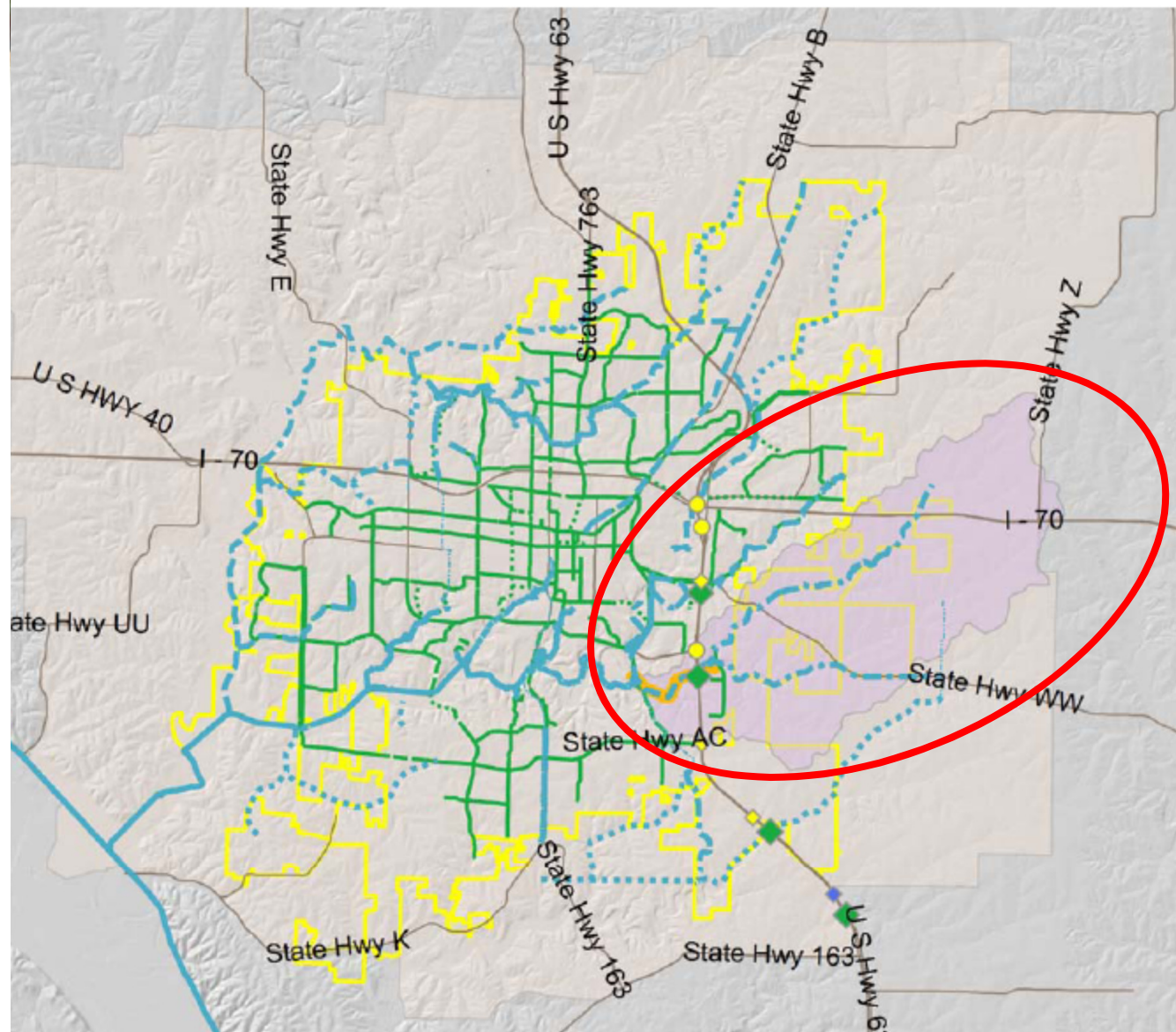


Grindstone Creek Trail Summary

- \$1.57 million budget (approx \$1.4 million balance)
 - Funded by the 2010 Park Sales Tax
 - Included in the ballot issue project list that was approved by voters November 2010.
- One component of a city-wide trail network that provides connectivity for recreational and non-motorized transportation.
- Only trail in this portion of city that provides recreational trail connection to an estimated (source Allstate Eng):
 - 5,000 residents
 - 3,000 jobs
 - Battle High School

Grindstone Trail Service Area

MAPWINDOW



Possible Hwy 63 Crossing Points

Categories: Type

- Existing Roadway Overpass
- Existing Roadway Underpass
- Through Existing Culvert
- Under Existing Creek Bridge

Parks - Trails Plan

Categories

- Existing
- By Others
- Proposed Primary
- Proposed Secondary
- Proposed Tertiary

Getabout Bike System

Categories

- Existing
- Funded
- Proposed

Proposed_Grindstone_Trail

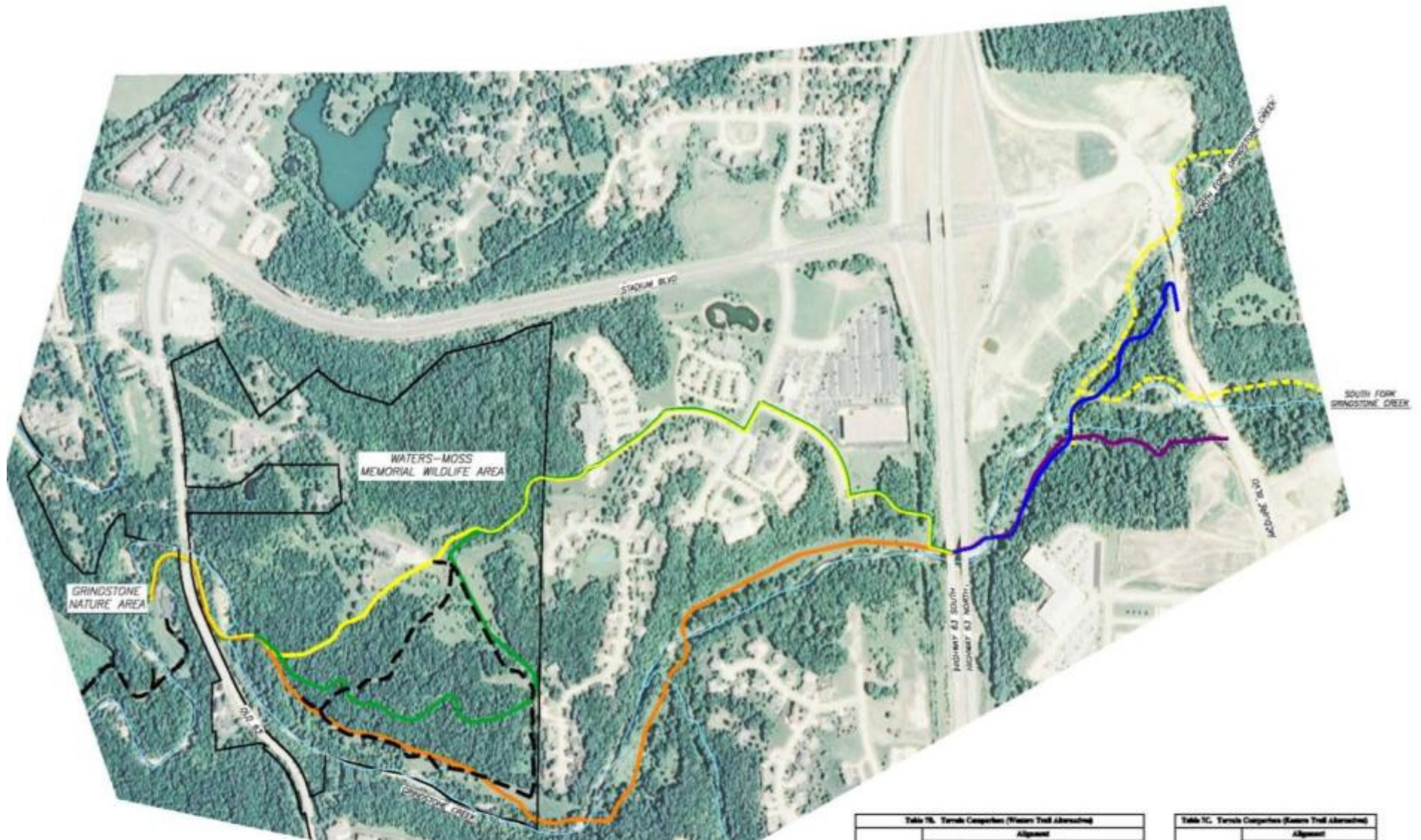
MoDOT Roads

Approx. Trail Service Area

Columbia City Limits

Columbia Metro. Area





- ORANGE ALIGNMENT
- YELLOW ALIGNMENT
- GREEN ALIGNMENT
- BLUE ALIGNMENT
- VIOLET ALIGNMENT
- FUTURE TRAILS
- EXISTING TRAILS IMPROVED SURFACE
- EXISTING MINOR NATURAL SURFACE

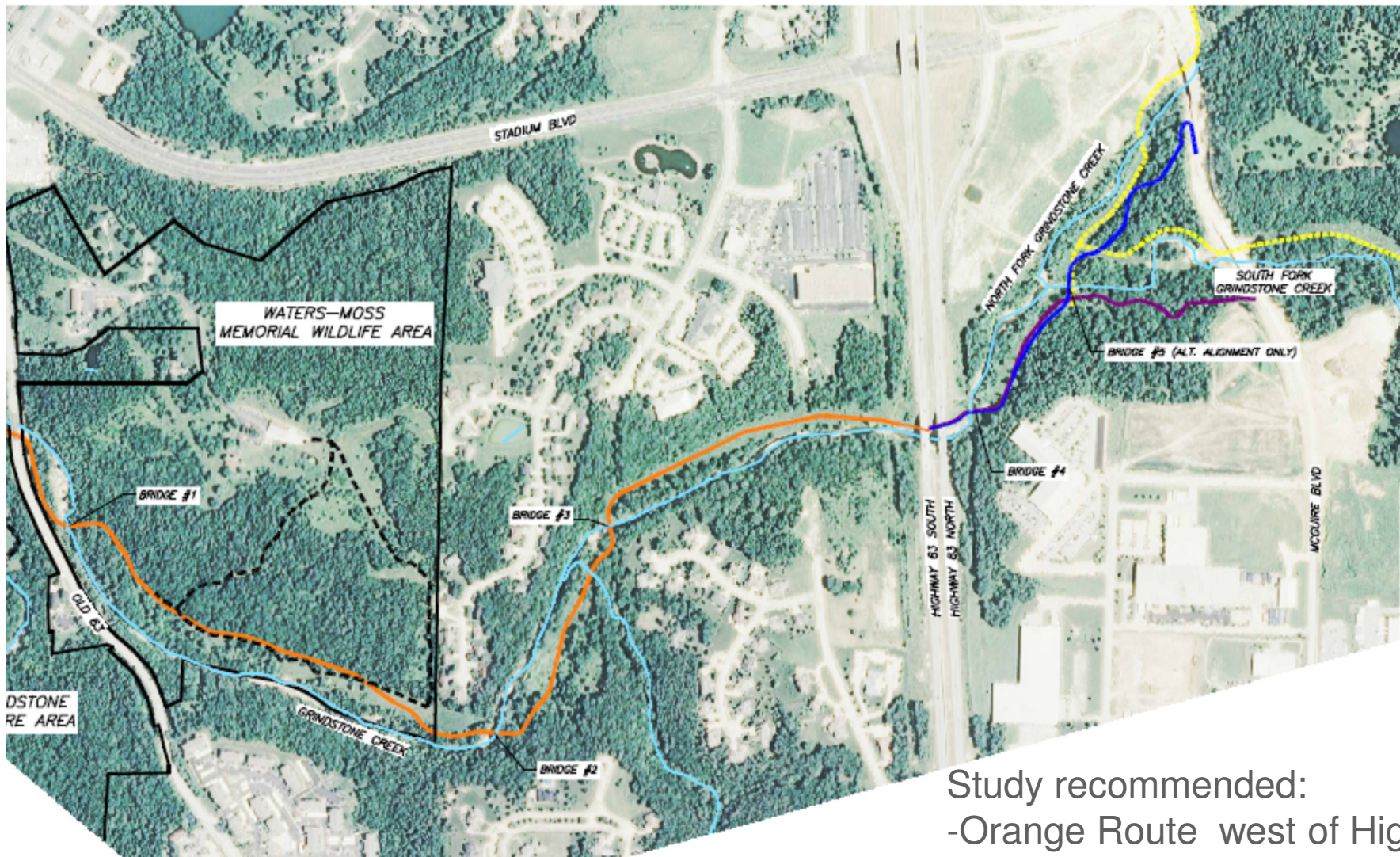
SCALE: 1" = 400'

0 200 400 800

Study evaluated 5 possible trail routes

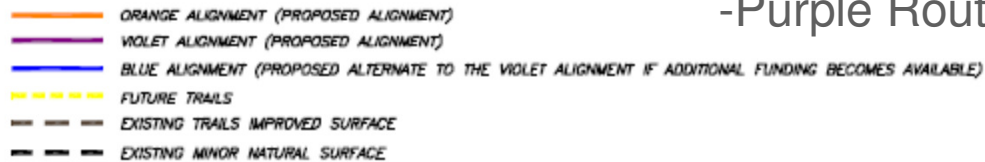
Table 16. Terrain Comparison (Western Trail Alignment)			
	Alignment		
	Orange	Yellow	Green
Length (ft)	6,768	6,696	8,592
Length (mi)	1.28	1.27	1.59
Starting Elevation (ft)	623	623	623
Ending Elevation (ft)	606	630	606
Average slope measured over 100' segments (%)	1.38%	4.30%	4.00%
Total Elevation Gain (ft) (measured by adding the elevation increase for each 100' segment of trail)	71	176	176
Total Elevation Loss (ft) (measured by adding the elevation decrease for each 100' segment of trail)	-64	-146	-151

Table 16. Terrain Comparison (Western Trail Alignment)		
	Alignment	
	Blue	Violet
Length (ft)	2,408	2,117
Length (mi)	0.46	0.4
Starting Elevation (ft)	636	636
Ending Elevation (ft)	704	702
Average slope measured over 100' segments (%)	4.20%	1.20%
Total Elevation Gain (ft) (measured by adding the elevation increase for each 100' segment of trail)	67	66
Total Elevation Loss (ft) (measured by adding the elevation decrease for each 100' segment of trail)	-29	-12



Study recommended:

- Orange Route west of Highway 6
- Blue Route on Northeast end
- Purple Route to McGuire Blvd



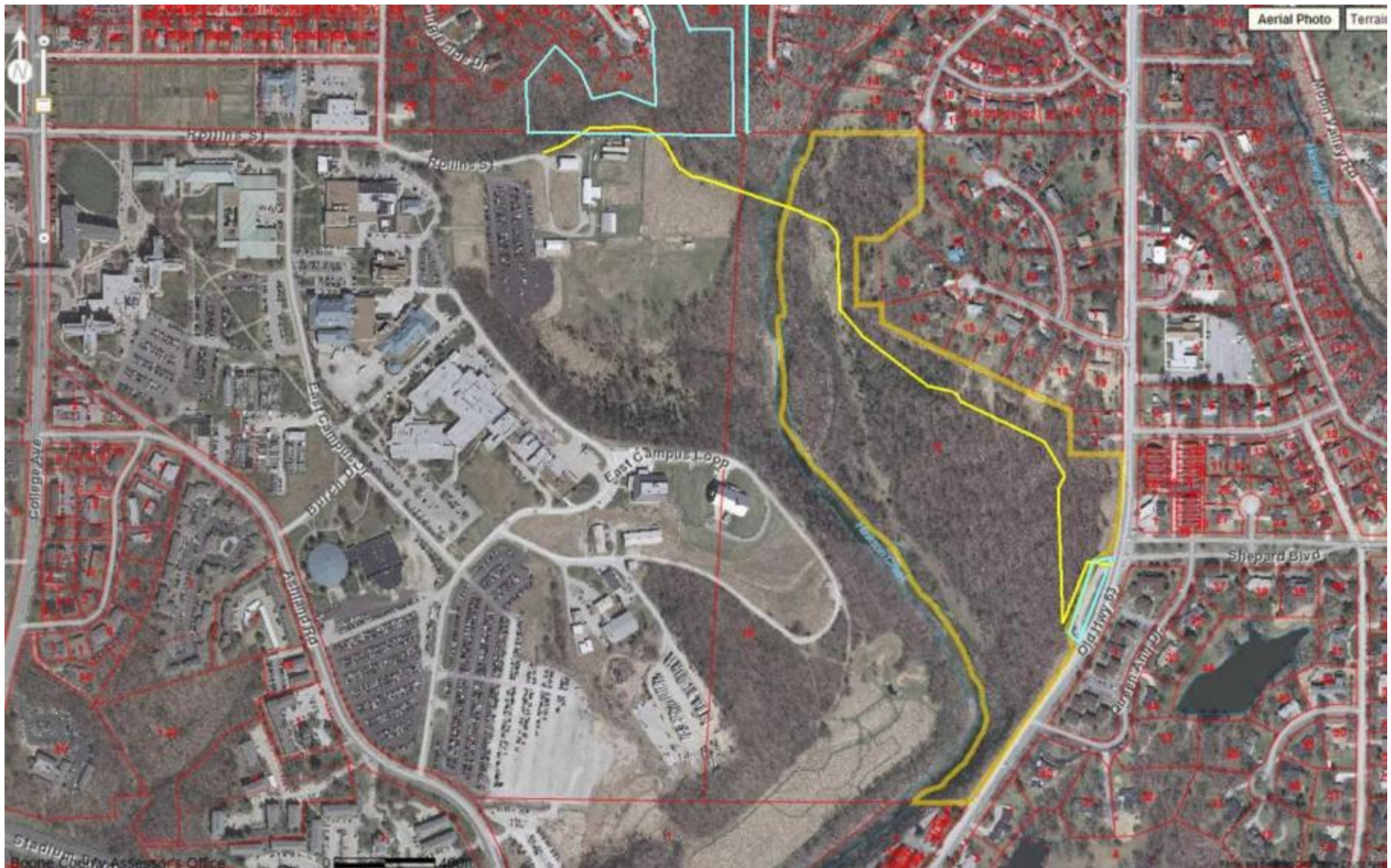


Commission Feedback Requests

1. Provide Council with feedback as to whether the Commission supports the concept of deferring the Grindstone trail project and utilizing its funding to assist in completing high priority projects identified through the GetAbout Planning process.
2. Provide Council any feedback the Commission might have as to the preferred priority order of the nine projects being considered for funding.



Shepard-Rollins Connector \$1.7m





Shepard-Rollins: Maguire Connection





Round 2 Capital Projects

Ted Curtis
Columbia Public Works Dept.



Background

- Per Federal legislation, the objective is to demonstrate mode shift – i.e. how many people can we get to leave the car at home and walk or ride a bike, at least occasionally, for errands or to work.
- \$22.5 million + \$6 million additional (Round 2) was granted to each of four communities:
 - **Columbia**
 - **Minneapolis**
 - **Marin County (San Francisco area)**
 - **Sheboygan County, WI**
- The program is not in the latest federal highway bill, but unless Congress rescinds the existing funding, it is available until spent.



Background (Contd.)

- Potential projects were vetted through GetAbout Committee and Bike/Ped and Parks Commissions.
- 19 recommended Projects were presented to Council in a memo on March 19, 2012.
- Council unanimously authorized proceeding with the first five.
- Council requested public input prior to prioritizing the remaining projects, which was completed

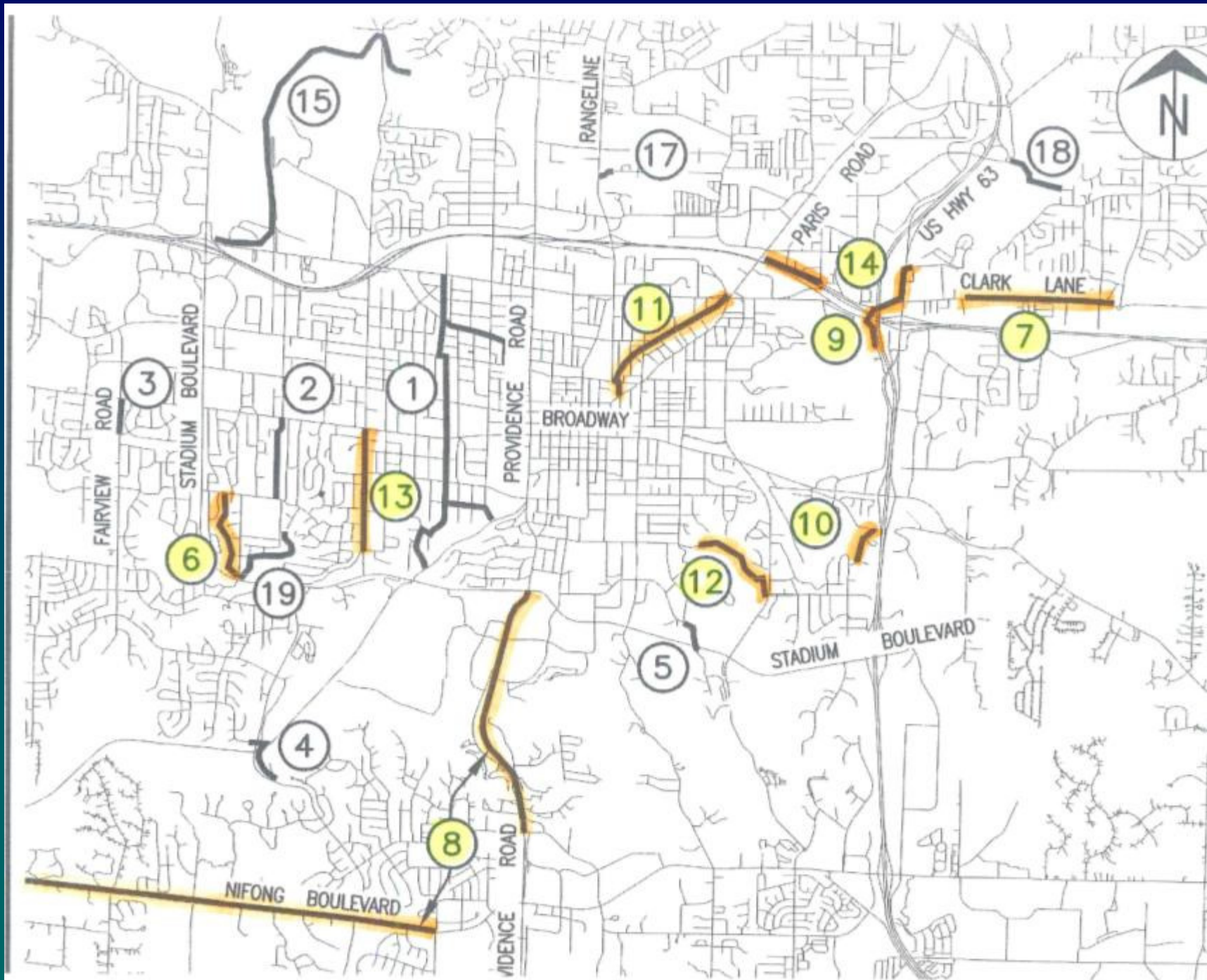


Council work session 10/1

1. Projects 6 thru 19 were presented to Council on October 1. Projects 15-19 were deferred
2. Council suggested also deferring the Grindstone Trail (ballot issue funded) and bringing the \$1.4m to help fund projects 6 thru 14.
3. Council requested recommendations from Commissions (Disability, Bike/Ped, Energy and Environment, Parks) on:
 - 1. Transferring Grindstone Trail Funds**
 - 2. Recommended Priority on projects 6-14**

Projects 6-14

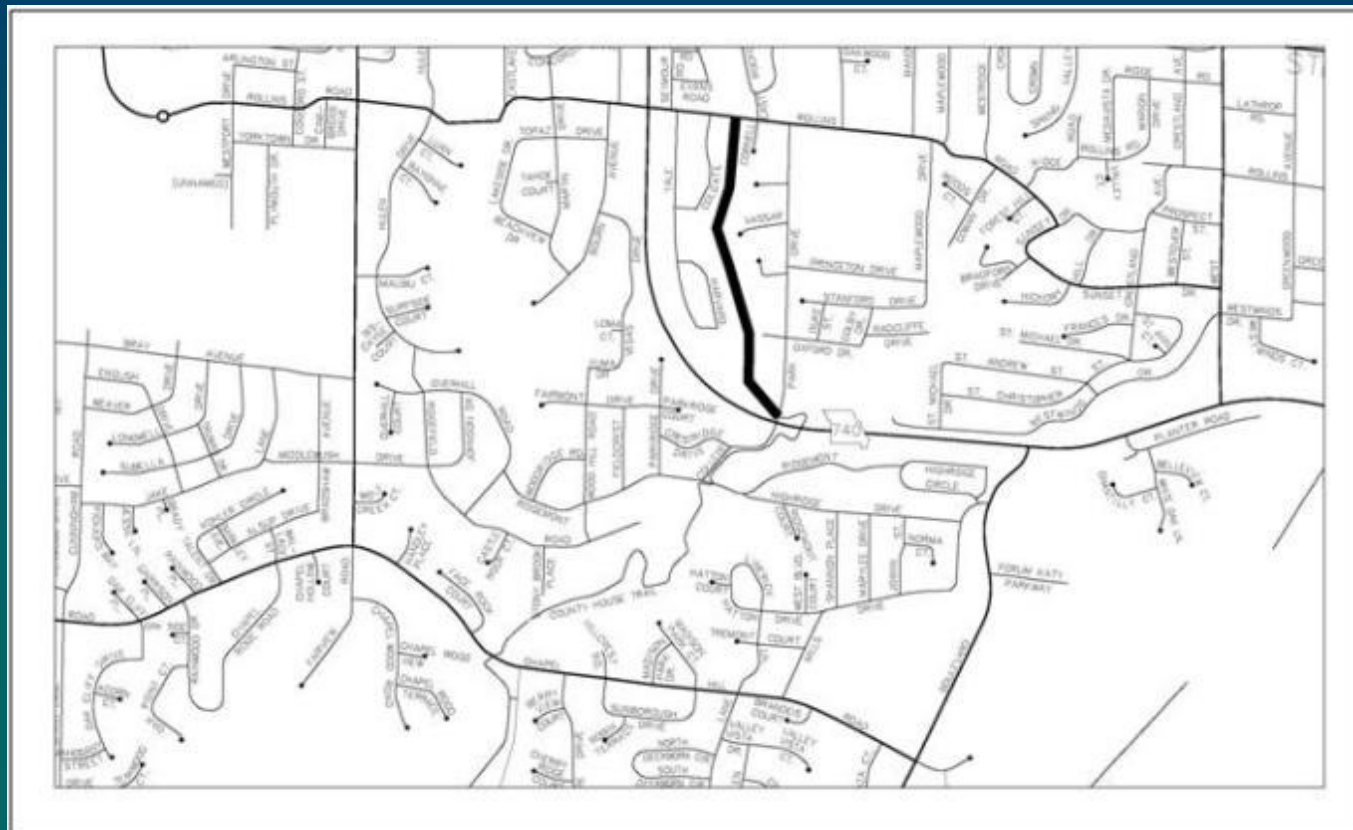
map loc #	Candidate Capital Projects	Ward	Mode shift potential	AVG Commission rating	Survey Votes	Estimated Cost	Comments	rank 1-3 (3 each, 1 being high)
6	County House Trail Phase 2 West. Connects from Rockcreek Drive to County House Trail Phase 1, predominantly on City ROW.	4	1	1.3	140	\$ 445,000	Neighborhood Connector. has support, 3 easements reqd	
7	Clark Lane Sidewalk, East. Ballinger to Woodland , north side	3	1	1.5	113	\$ 325,800	Important link - dangerous for pedestrians.	
8	Providence and Nifong Bike lanes: Providence (Stadium to Green Meadows), & Nifong (Bethel to Scott) - repair and stripe	5	1	tbd	129	\$ 309,300	Important on-street connections	
9	Hinkson Creek Trail, Conley to 63 (Conley Rd to Clark Lane, Hwy 63)	3	1	1.7	133	\$ 555,000	Integrates with Conley TDD, important link	
10	Hominy Trail Connection (connecting Hominy Trail to Shepard Neighborhood at Pepper Tree Ln)	6	2	2.0	84	\$ 180,000	Recommended by neighborhood	
11	Wabash Walkway, Pedway along COLT Right of Way from Wabash Station to Paris Road, connecting to bike lanes and sidewalks on Paris. Future phase to connect to Vandiver.	1,3	2	1.7	91	\$ 544,000	Requires 19 easements. Bypasses narrow section of Paris road.	
12	Shepard to Rollins East-West connection (includes bridge over Hinkson Creek)	6	2	1.7	137	\$ 1,740,000	Requires 2 easements	
13	West Blvd Sidewalk. Westwinds to Stewart plus upgrade the sidewalk from Stewart to Broadway, west side	4	2	2.0	97	\$ 567,400	Priority 1 on sidewalk master plan, deferred Phase 1 project	
14	Clark Lane Sidewalk, West. Eastwood to Paris, north side	3	2	1.5	72	\$ 410,325	Important link - dangerous for pedestrians.	



6. County House Trail Phase 2 – West Cost Estimate: \$445,000 Length: 3400'

Priority (1-3): Mode Shift estimate: 1 Avg Commission Rating: 1.3 Votes: 140

- 🚲 Trail extending County House Trail from the current terminus at the Stadium/College Park intersection west passing a private Swim Club and continuing north on City alley right-of-way along a tributary creek to Rollins Ave. Connects neighborhoods from Broadway south and Stadium east to the County House trail and bike lanes on Stadium Blvd. Bypasses major hills on College Park Dr and Rollins Rd.



7. Clark Lane Sidewalk – East

Cost Estimate: \$325,800 Length: 4320'

Priority (1-3): Mode Shift estimate: 1 Avg Commission Rating: 1.5 Votes: 113

🚲 Sidewalk, 5' wide, north side of Clark Lane from Balliger east to Woodland. Wide City right-of-way allows sidewalk alignment compatible with future widening of Clark Lane. Critical link from neighborhoods in the north-east portion of the City to downtown via Hinkson Creek Trail Phase 3.

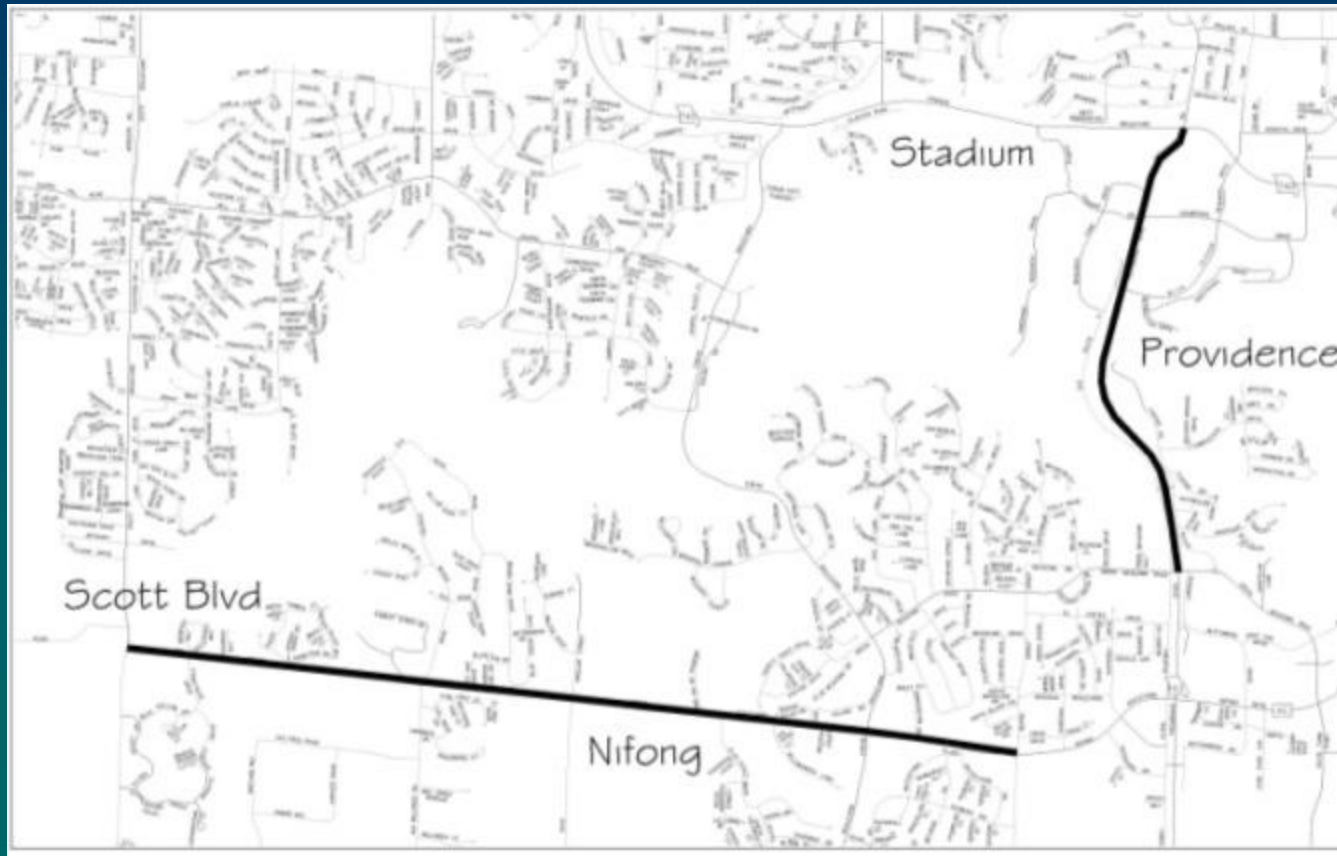


8. Providence and Nifong Bike Lanes

Cost Estimate: \$309,300 Length: 4.6 miles


Priority (1-3): Mode Shift estimate: 1 Avg Commission Rating: n/a Votes: 129

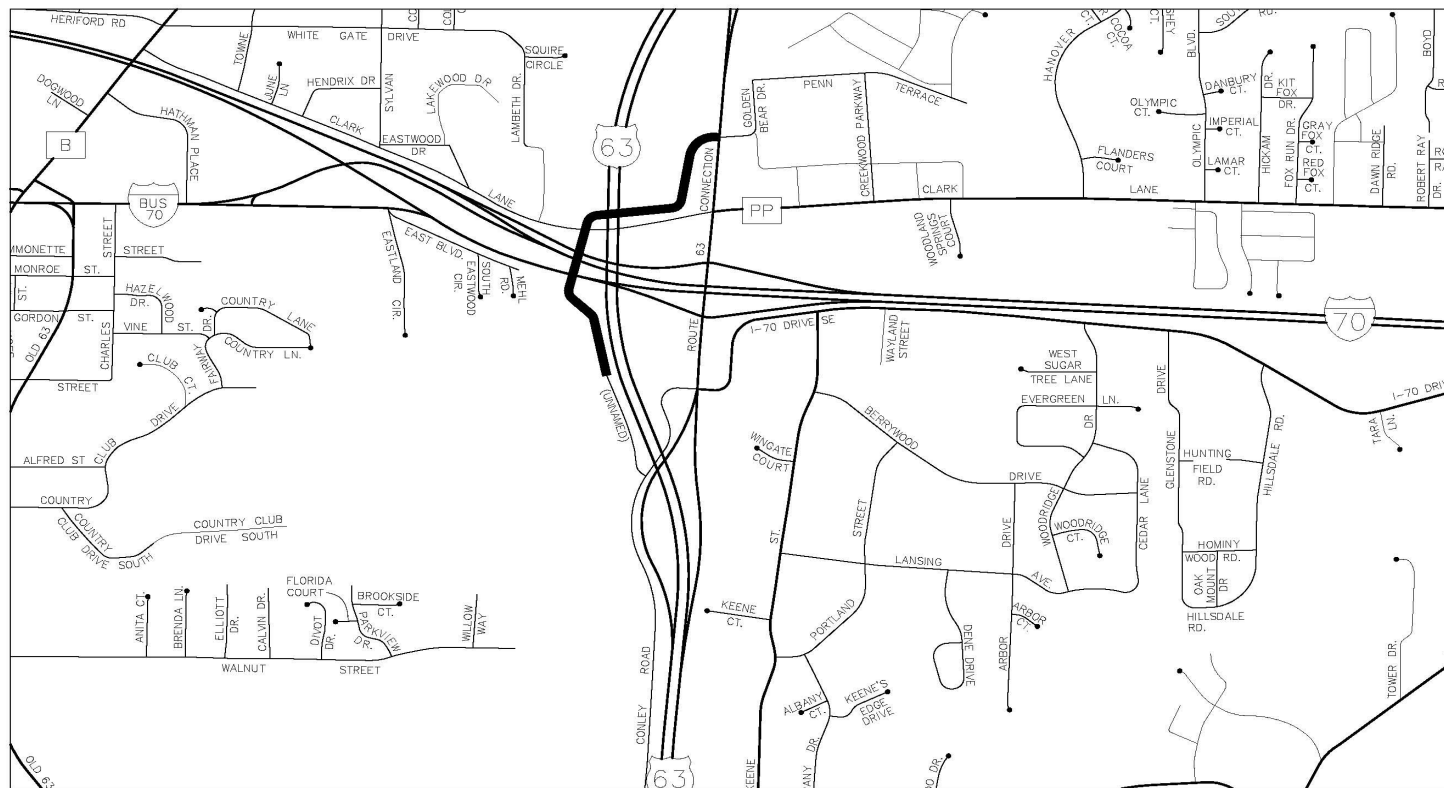
- 🚲 Repair and stripe bike lanes on Providence from Stadium to Green Meadows and Nifong/Vawter School from Bethel to Scott. Includes minor Nifong/Bethel and Nifong/Forum intersection improvements. Important link in completing the on-street system, but poor condition of portions of the shoulders prevented earlier bike lane striping.



9. Hinkson Creek Trail – Conley to 63 Cost Estimate: \$555,000 Length: 2010'

Priority (1-3): Mode Shift estimate: 1 Avg Commission Rating: 1.7 Votes: 133

 Includes a 10' concrete trail connecting Conley Road to Hwy 63 near the Home Depot retail area. Important link allowing bicycle and pedestrian access around the congested Hwy 63/I-70/Clark Lane intersection. This, in conjunction with the Clark Lane Sidewalk – East project and the Conley Road Extension TDD, will provide access from neighborhoods in the northeast quadrant of the City to retail areas southeast of the interchange. It will eventually connect to Stephens Lake Park and downtown.



10. Hominy Trail to Shepard Neighborhood

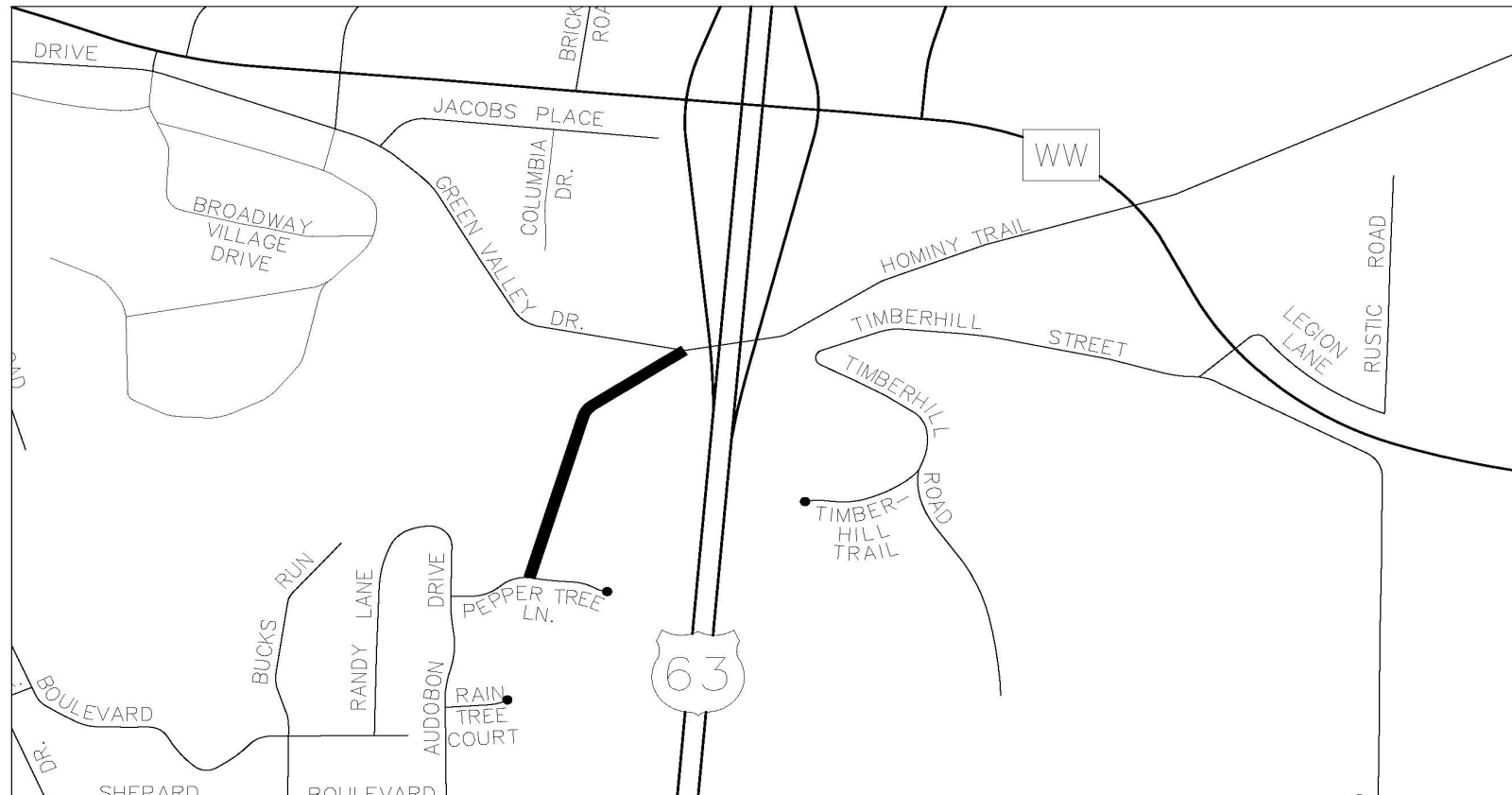
Cost Estimate: \$180,000 Length: 1300'

Mode Shift estimate: 2

Avg Commission Rating: 2.0

Votes: 84

- Includes a combination of 8' concrete trail and shared roadway connecting from Pepper Tree Lane in the Shepard Neighborhood to the Hominy Trail. Also connects the Shepard Neighborhood to the West Broadway retail area.



11. Wabash Walkway

Mode Shift estimate: 2

Cost Estimate: \$544,000

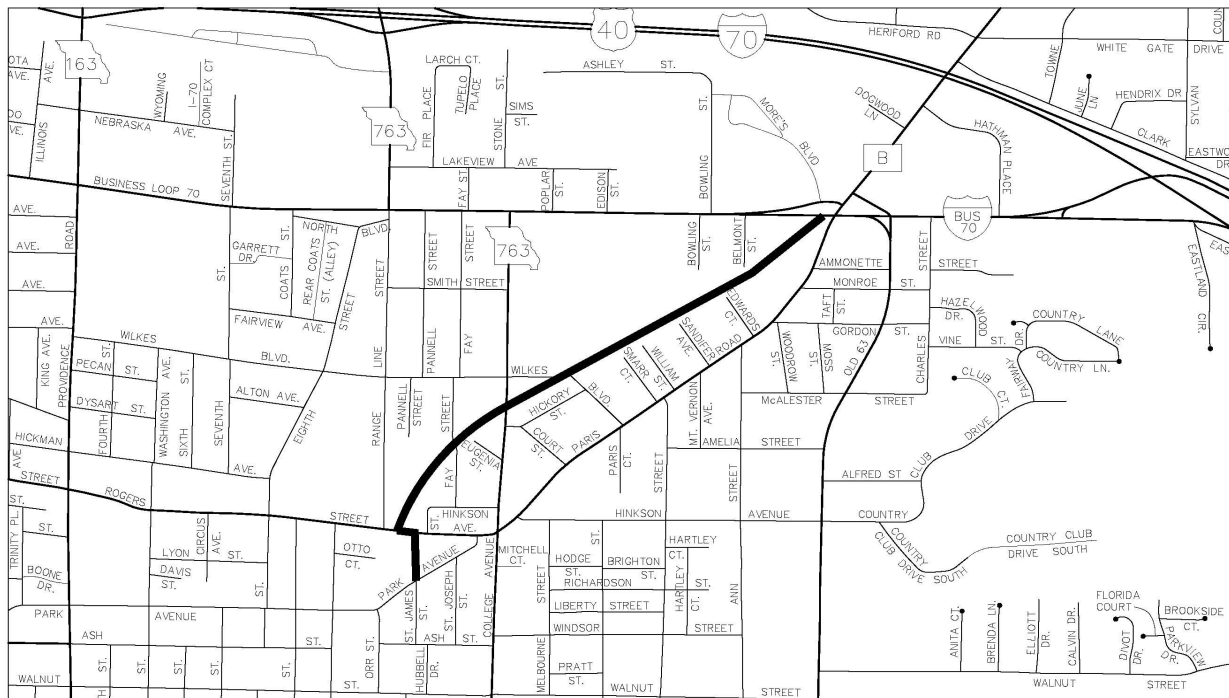
Avg Commission Rating: 1.7

Length: 3,550'

Votes: 91



Includes an 8' pedway from Columbia College to Business Loop 70 along the COLT railroad, pedestrian crossings of College near the rail crossing and a pedestrian crossing of Paris Road just south of Business Loop 70, connecting to the existing pedestrian bridge. Also includes possible connections south from Columbia College to the Wabash Station. Bypasses the narrow, busy section of Paris road from College to Business Loop 70.

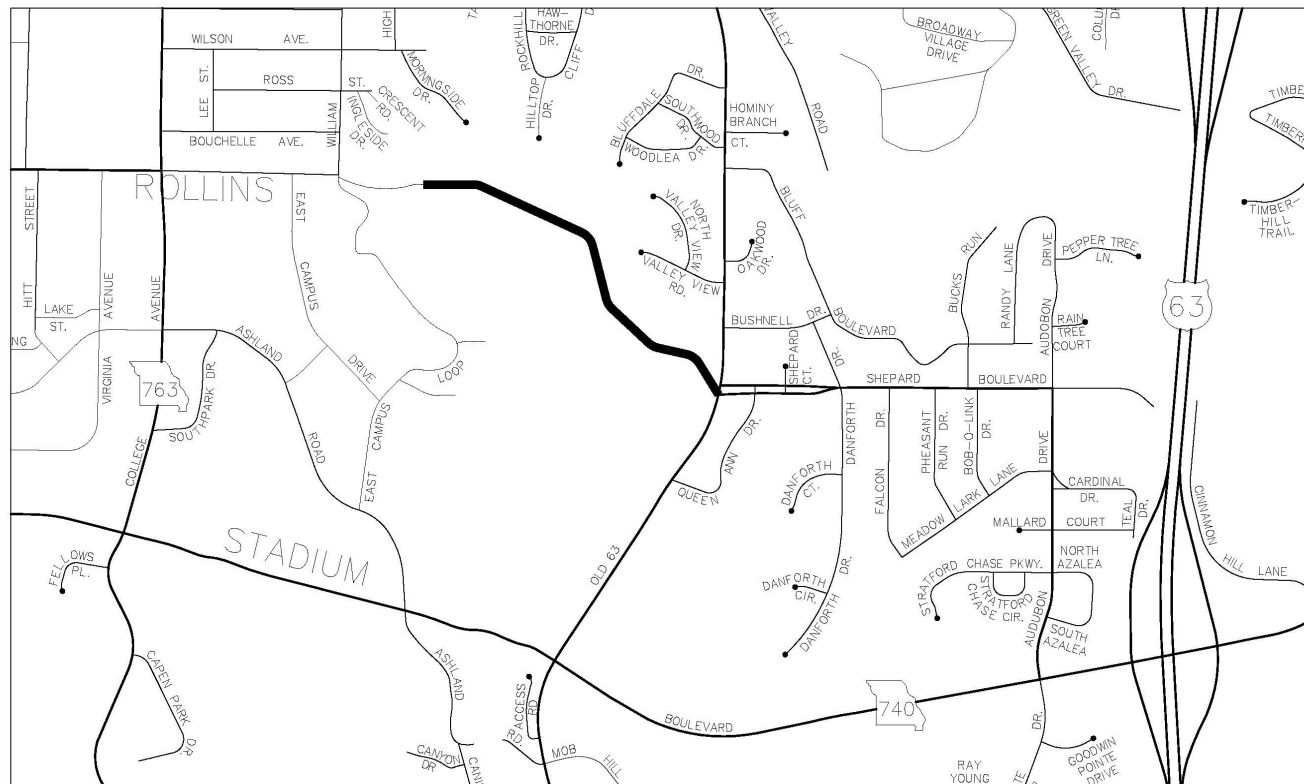


Cost Estimate: \$1,740,000

Mode Shift estimate: 2

Avg Commission Rating: 1.7

Votes: 137



13. West Boulevard Sidewalk

Cost Estimate: \$567,400

Length: 4,900'

Mode Shift estimate: 2

Avg Commission Rating: 2.0

Votes: 97



Includes a new 5' Sidewalk on the west side of West Boulevard, from Westwinds to Stewart (2,525') and replacing the sidewalk from Stewart to Broadway (1,375'). Busy street and no sidewalks on either side south of Stewart. Sidewalk between Stewart and Broadway is completely deteriorated.



14. Clark Lane Sidewalk - West Cost Estimate: \$410,325 Length: 2,514'

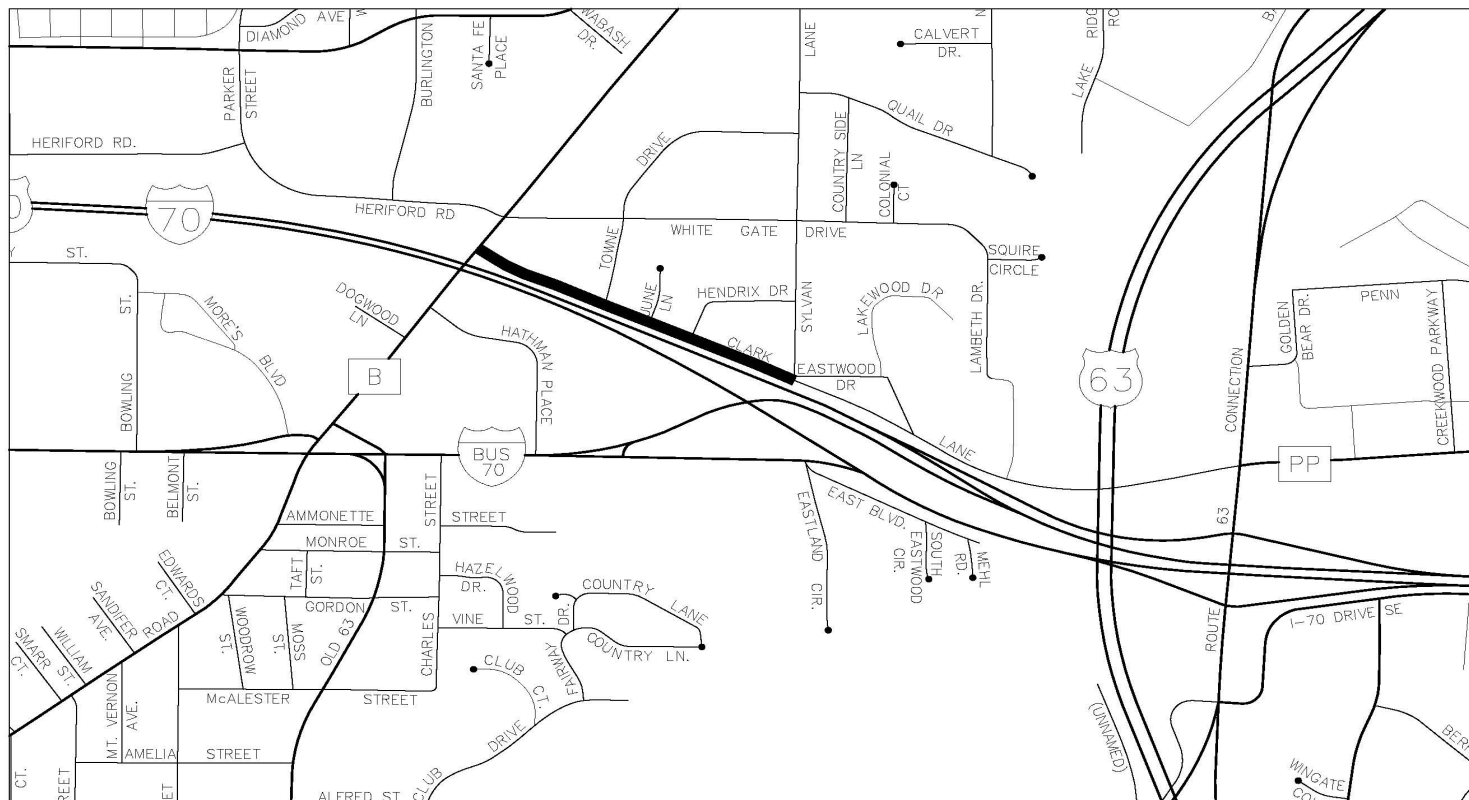
Mode Shift estimate: 2

Avg Commission Rating: 1.5

Votes: 72



Sidewalk, 5' wide, north side of Clark Lane from Paris Road east to Eastwood. Currently used by residents even without a shoulder or sidewalk. Provides safe link from neighborhoods in the area to businesses on Paris Road and to retail areas south of I-70 via Hinkson Creek Trail – Conley to Hwy 63.





Summary

- Potential projects were vetted through Commissions and the public.
- Projects 6 thru 14 had highest ratings
- In round 1 Council “over programmed” projects. During project development, some projects were put on hold.
- High potential for a contingent project – Round 1 capital projects construction costs coming in significantly below estimates.



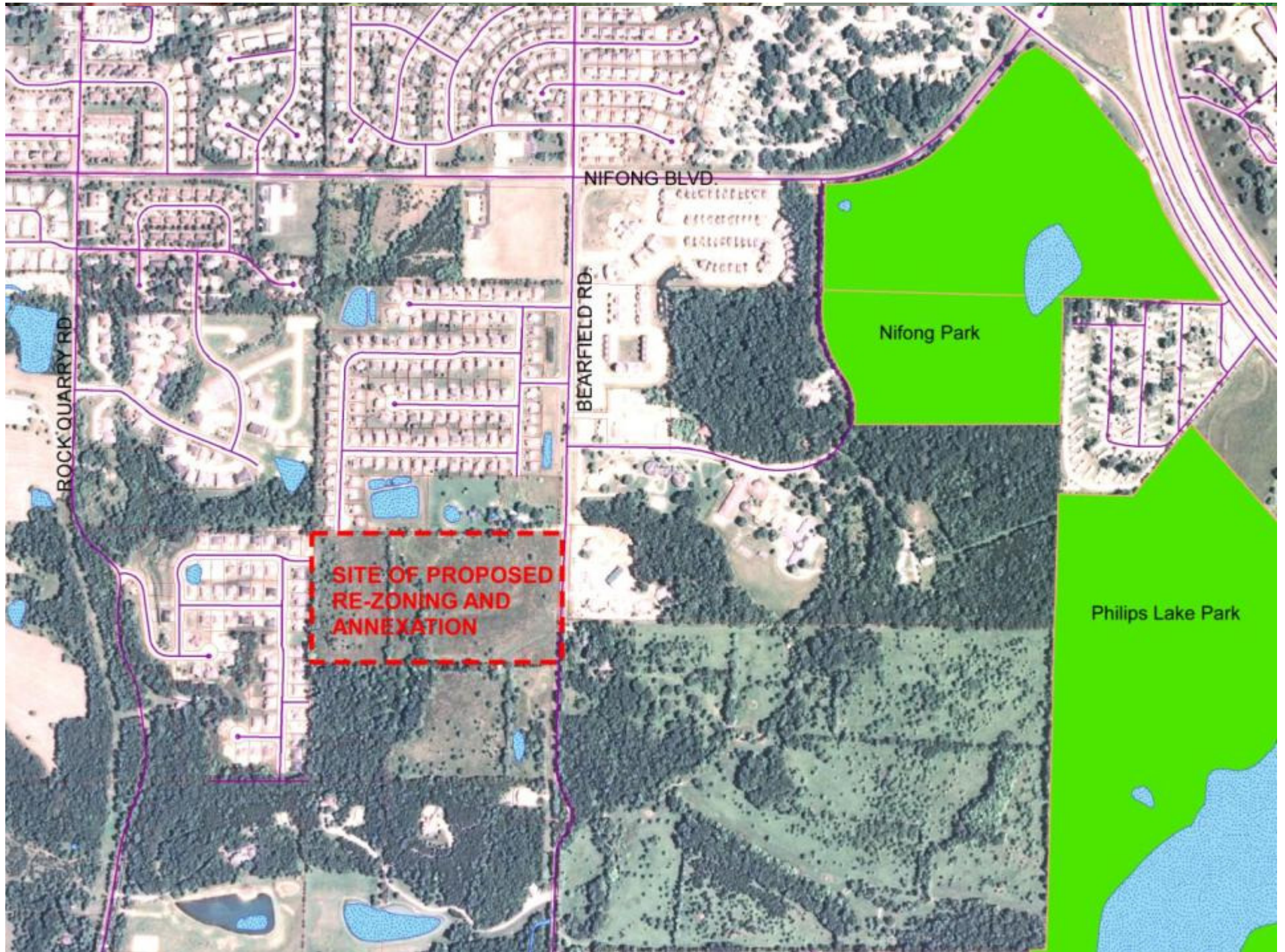
Commission Feedback Requests

1. Provide Council with feedback as to whether the Commission supports the concept of deferring the Grindstone trail project and utilizing its funding to assist in completing high priority projects identified through the GetAbout Planning process.
2. Provide Council any feedback the Commission might have as to the preferred priority order of the nine projects being considered for funding.



6. Rezoning – Easley Trust

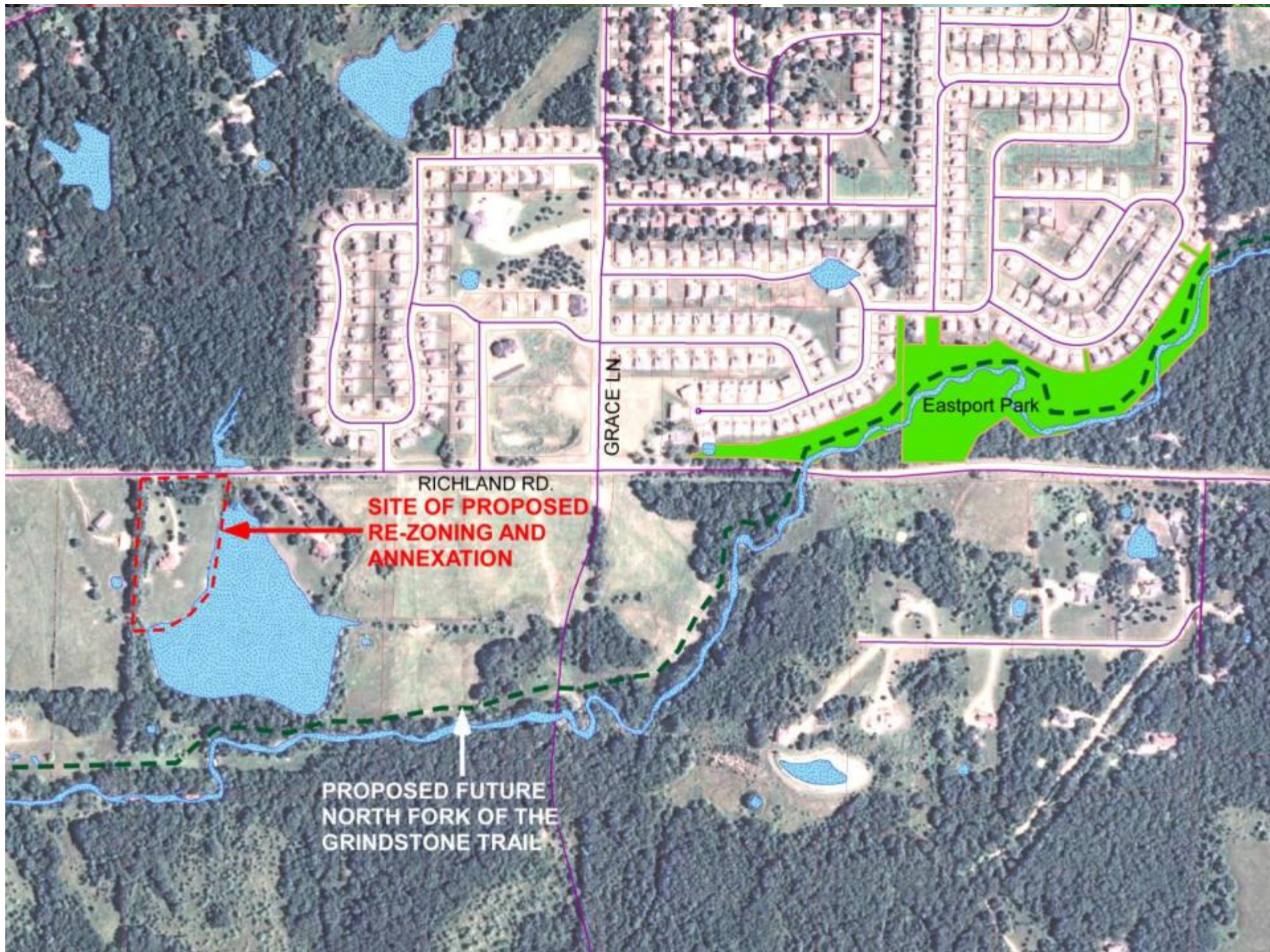
- Located within ½ mile of Nifong and Phillips Parks and the northern edge of Gans Creek Recreational Area.
- Size: 21.6 acre site located on the west side of Bearfield Road.
- Currently zoned: County A-2
- Proposed zoning: R-1 (single family residential)
- All new city development must include storm water controls.
- No adverse effect to the park system.





7. Rezoning – Powell Trust

- Located within ½ mile of Eastport Park and the future North Fork of the Grindstone Trail.
- Currently zoned: County R-S
- Proposed zoning: PUD-4
- Size: 5.25 acre site located on the south side of Richland Road.
- Property proposed involves converting existing house and adding 3 dwellings to serve as retirement village for elderly citizens of Columbia.
- No adverse effect to the park system.





8. Proposed Master Plan – Jay Dix Station Neighborhood Park

- New development of the Jay Dix Station
- 3 multi-use fields
- Small shelter (24x24)
- Playground
- Full length basketball court
- Mountain bike skills loop off of MKT Trail
- North connector to MKT Trail
- 8 station fitness equipment cluster
- Requires removal of 53 trees (20-30 to be replanted depending on available finances)



BEGINNER MOUNTAIN BIKE SKILLS LOOP



TYPICAL FULL COURT BASKETBALL



TYPICAL NEIGHBORHOOD PARK SHELTER



FITNESS EQUIPMENT STATION



Jay Dix Station Proposed Master Plan

October 18, 2012





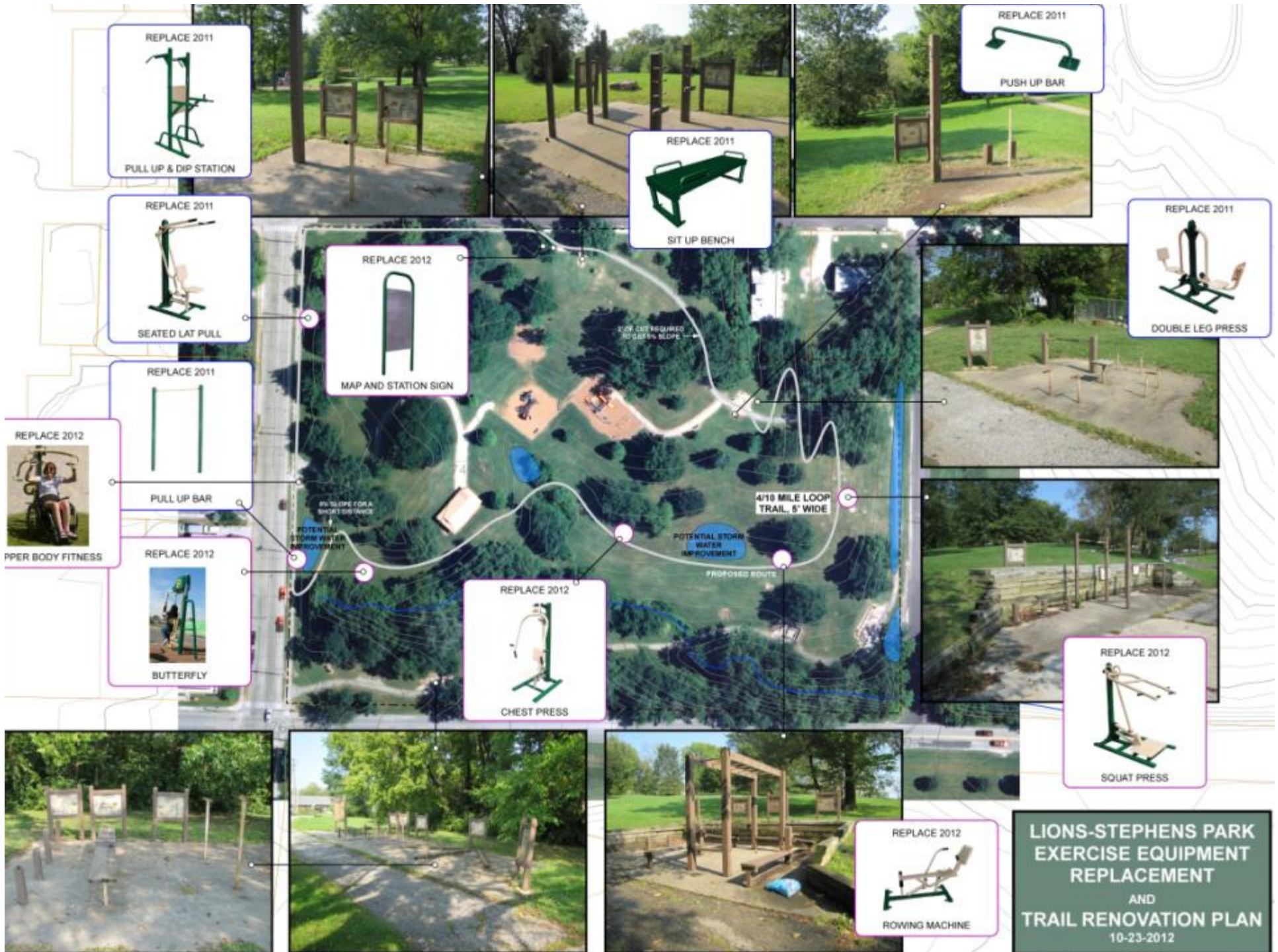
Jay Dix Commission Action

- Recommend to Council that the P&R Commission supports the plan:
 - **As presented by staff or;**
 - **With modifications by Commission.**
- Other action as deemed appropriate by Commission.



9. Council Items

- Jay Dix Station (previously discussed)
- First Night Agreement
- Lions-Stephens Park Improvements
 - Improvements to existing park amenities
 - 11 new fitness stations (replacing old)
 - Replace asphalt trail with concrete
 - Add storm water controls





10. Capital Project Update





Nifong Park

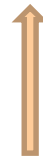
ADA Fishing Platform



TLRA Little Mate's Cove Repairs



Plumbing Repairs



Sand and Water Blasting





Atkins Park Batting Cage Construction





Scott's Branch Trail Boardwalk



Extending south
from observation
platform





CARP Event Fire Station #8





Louisville Park Eagle Scout Project





Nifong Park Maplewood Barn

**Restroom doors, hand rails, mirror per
ADA specifications**





Albert-Oakland Park Ballfield Fence Demolition





RSC & Antimi Ballfields Re-seeding Worn Areas



Hominy Creek Trail



Trail Construction



L. A. Nickell Golf Course Winter Tee Area & Cart Path Improvements

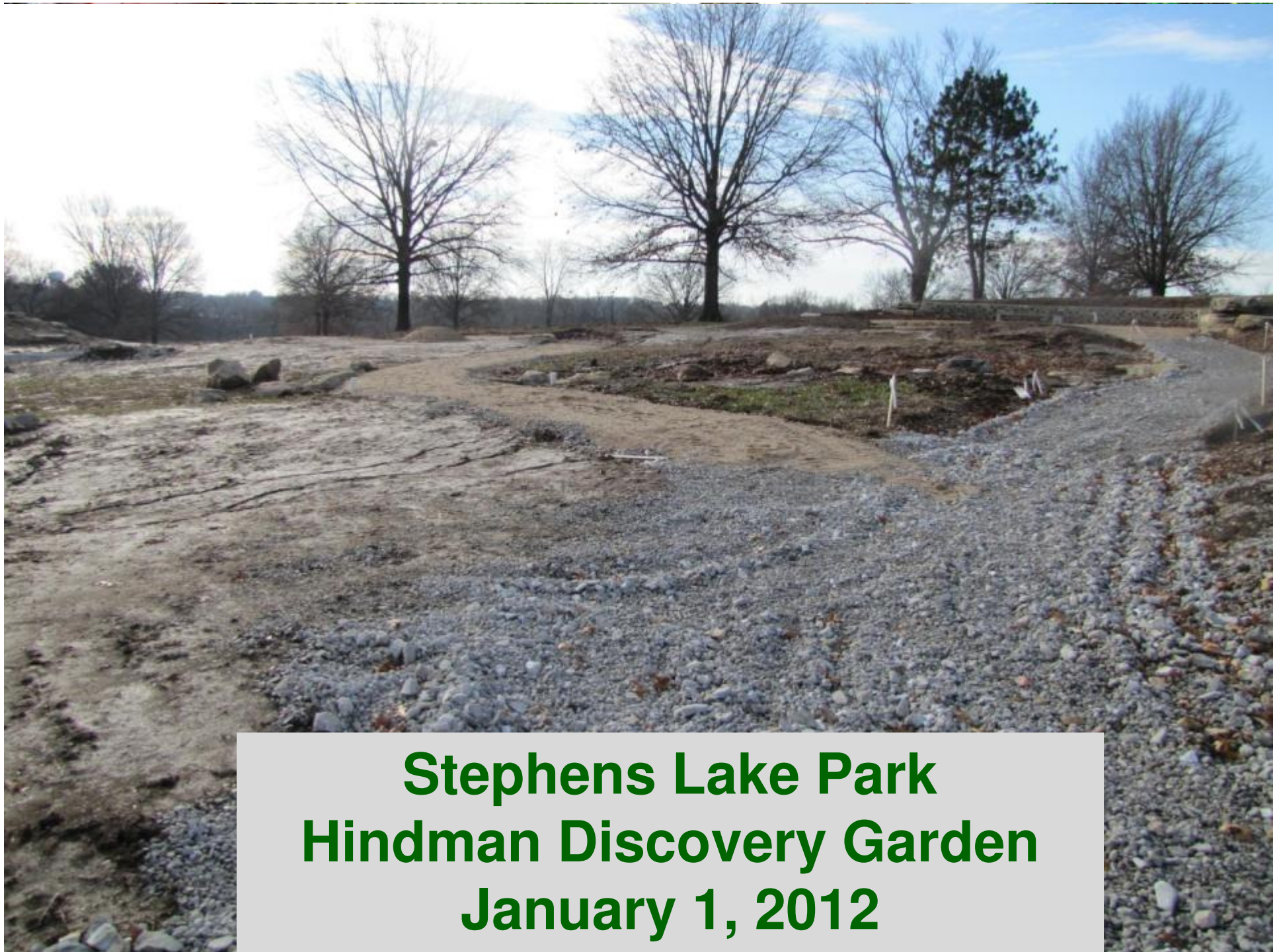




MKT Trail – Stadium Access Fitness Stations



**Scott's Branch Trail
Fairview Walk to School Day**



**Stephens Lake Park
Hindman Discovery Garden
January 1, 2012**



**Stephens Lake Park
Hindman Discovery Garden
October 16, 2012**



**Hindman Discovery Garden
Dedicated October 16, 2012**



11. Recreation Services Report



C.A.R.E.



- The school year program is up and running with 15 youth and more to come.
- Kristin McCowan recently joined the staff as the Job Coach assigned to work with the youth from Boone County Family Resources.
- C.A.R.E. Job Coach Tonia Turner was recognized at the City employee picnic for excellence in customer service.



50+ - OAK Tours



Fall Harvest Trip to the pumpkin patch on Oct. 22



Sports



Fall season coming to an end.



Special Olympics Sports



Bocce, Golf, Tennis and Softball came to a close with State Games in Cape Girardeau. Our delegation had 53 athletes and 9 Unified Partners competing.

One of the many highlights was our men's regulation softball team taking gold over The Southeast Storm.



Upcoming Events

- **BYOBW Track or Treat, Oct 27**
- **Tiger Night of Fun, Oct 31**





12. Commission Comments

13. Staff Comments

14. Public Comments



15. Closed Session:

Review and Recommendation of Heibel-March RFPs

Motion needed and Roll Call Vote:

Adjourn meeting to closed session per Missouri Revised Statutes 610.021 (12) Sealed bids and related documents, until the bids are opened; and sealed proposals and related documents or any documents related to a negotiated contract until a contract is executed, or all proposals are rejected.

Upon end of closed session, another motion needed:

- Commission may adjourn closed session, then reopen meeting or***
- If no further business, Commission may simply adjourn without reopening meeting***