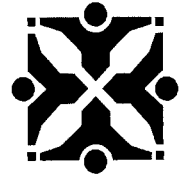


City of Columbia

701 East Broadway, Columbia, Missouri 65201



Agenda Item Number: REP 112-15

Department Source: Public Works

To: City Council

From: City Manager & Staff

Council Meeting Date: 11/16/2015

Re: Snow Priority Routes Report

Documents Included With This Agenda Item

Council Memo

Supporting documentation includes: Listing of First and Second Snow Priority Routes, Map of First and Second Snow Priority Routes Color Coded by Ward, Diagrams of additional streets added to the First and Second Snow Priority Routes

Executive Summary

Staff has prepared for Council consideration a report concerning changes to the snow priority routes. Four exhibits, which include the proposed changes, are attached as follows:

Exhibit A - listing of streets identified as first and second snow priority routes

Exhibit B - color coded ward maps of first and second snow priority routes

Exhibit C – diagram of additional 1.8 miles added to the first priority route to include a portion of St. Charles Road, from Lake of the Woods to Battle Avenue, all of Battle Avenue and Spartan Drive.

Exhibit D – diagram of additional 0.3 miles added to the second priority route to include Laurel Drive and a portion of Summit Drive.

Discussion

On October 7, 2013, Council passed Ordinance 21841 prohibiting parking on signed snow routes when snow is more than two inches deep; as well as authorized the purchase of new snow removal equipment. Due to these changes, the efficiency of snow removal operations has significantly improved.

In October of 2014, staff recommended and Council approved, adding 10 additional miles of priority streets bringing the total of first and second priority streets to 180.9 miles. The winter of late 2014 and early 2015 had only two major snowfalls, but several minor events. Staff was able to determine that the additional priority mileage could be accommodated based on these events.

Although no additional snow removal equipment has been added to the fleet since FY2014, two new positions were added in Street Operations, increasing efficiency in treating and removing snow from sidewalks, and providing extra coverage when there are employee vacancies and/or when employees are out sick during the winter months.

The areas adjacent to Battle Avenue, Spartan Drive and the Lake of the Woods Golf Course along St. Charles Road, were annexed into the City in 2015 transferring snow removal services from Boone

City of Columbia

701 East Broadway, Columbia, Missouri 65201



County Operations to City Operations. Since several subdivisions located in Boone County's jurisdiction are connected to St. Charles Road, as with other shared routes, the County will typically plow the road on their way to and from the subdivision(s), although probably not a continuous plowing operation. It's also very unlikely that the County will use their materials (snow melting agents) on the City's portion of road. Because there will be some assistance from the County, staff is comfortable recommending that 1.8 miles of St Charles Road, Battle Avenue and Spartan Drive, be added to the first snow priority route. Per Council request, staff has also added 0.3 miles to the second priority route to include a portion of Laurel Drive and Summit Drive. These additions bring the total first and second snow priority routes to 183 miles.

At this time, due to limitations in manpower and equipment, staff recommends that no other streets be added to the priority route list unless the same mileage that would be added, would also be removed from another street currently identified on the priority list. Priority routes are required to comply with the "no parking" requirements on snow routes when the snow is more than two inches deep on the roadway, so consideration regarding the impact to adjacent property owners would also need to be considered if other changes are made to the priority list.

Fiscal Impact

Short-Term Impact: The cost to install additional snow priority route signing will be \$1,700, and paid for from Street Operations budget.

Long-Term Impact: Long term costs will be absorbed in the Street Operations budget.

Vision, Strategic & Comprehensive Plan Impact

Vision Impact: Transportation, Governance & Decision Making

Strategic Plan Impact: Public Safety, Operational Excellence

Comprehensive Plan Impact: Mobility, Connectivity, Accessibility

Suggested Council Action

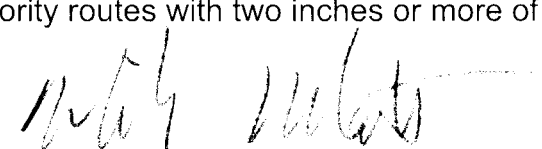
For information only.

Legislative History

10/01/1993 - Policy Resolution 174-93A establishing snow removal policy.

10/07/2013 - (Ord 21841) Prohibiting parking on priority routes with two inches or more of snow.


Department Approved


City Manager Approved



SUPPORTING DOCUMENTS INCLUDED WITH THIS AGENDA ITEM ARE AS FOLLOWS:

Listing of First and Second Snow Priority Routes,
Map of First and Second Snow Priority Routes Color Coded by Ward,
Diagrams of additional streets added to the First and Second Snow Priority Routes

EXHIBIT "A"

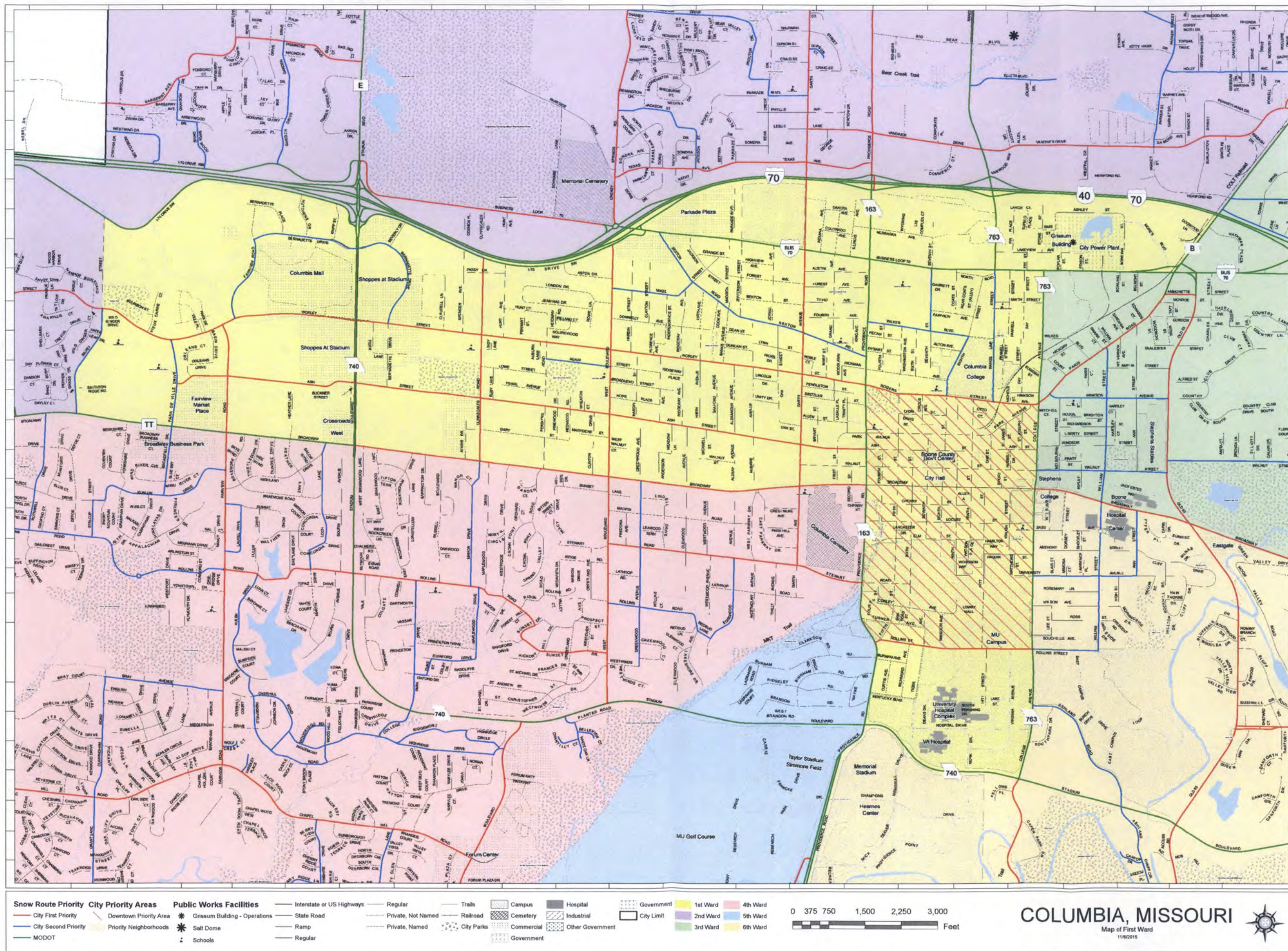
DISPLAYNAM	Snow Route
Abbeywood Dr	Second Priority
Ammonette St	First Priority
S Ann St	Second Priority
Arbor Pointe Pkwy	Second Priority
E Ash St	First Priority
Ashland Rd	Second Priority
Audubon Dr	First Priority
Azeal St	Second Priority
Ballenger Pl	First Priority
Barberry Ave	First Priority
Barksdale Mill Dr	Second Priority
Barnwood Dr	Second Priority
Battle Ave	First Priority
Bear Creek Dr	Second Priority
S Bearfield Rd	Second Priority
Bearfield Rd	First Priority
Bellevue Ct	Second Priority
Bentpath Dr	Second Priority
Bernadette Dr	Second Priority
Berrywood Dr	Second Priority
Bethel St	Second Priority
S Bethel Church Rd	Second Priority
Birchwood Dr	Second Priority
Blackfoot Rd	First Priority
Blue Ridge Rd	First Priority
W Blue Ridge Rd	Second Priority
Bluff Creek Dr	Second Priority
Bray Ave	Second Priority
Brickton Rd	First Priority
Broadfield Dr	Second Priority
E Broadway	First Priority
W Brown School Rd	First Priority
Brown Station Rd	First Priority
S Brushwood Lake Rd	First Priority
Bucks Run	Second Priority
Bull Run Dr	Second Priority
Burnwood Dr	Second Priority
W Business Loop 70	First Priority
Buttonwood Dr	Second Priority
Campusview Dr	Second Priority
Caniff Cir	Second Priority
Canyon Dr	Second Priority
Carter Ln	Second Priority
Cascades Dr	Second Priority
Chantilly Ct	Second Priority
Chapel Hill Rd	First Priority
Cherry Ridge Ln	Second Priority
Chinaberry Dr	Second Priority
Christian Fellowship Rd	Second Priority
Churchill Dr	Second Priority
Clark Ln	Second Priority
Clinkscates Rd	First Priority
College Park Dr	Second Priority
Concordia Dr	Second Priority
Conley Rd	First Priority
Corporate Lake Dr	First Priority
Crabapple Ln	Second Priority
Creasy Springs Rd	First Priority

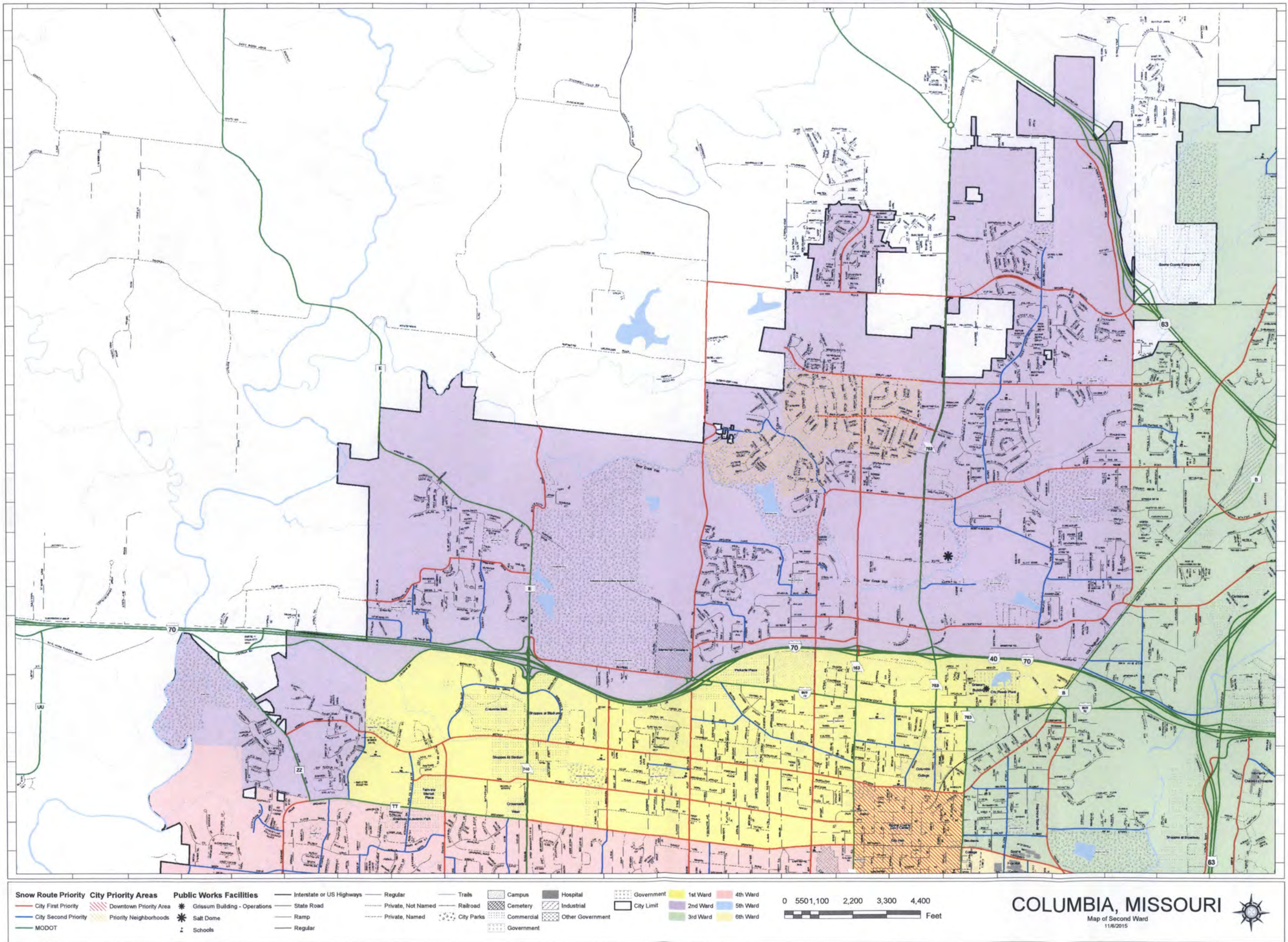
Crestwood Ln	Second Priority
Cunningham Rd	Second Priority
Dayspring Dr	Second Priority
Derby Ridge Dr	Second Priority
Discovery Pkwy	Second Priority
Duke St	Second Priority
East Brown Station Rd	First Priority
Edgewood Ave	Second Priority
N Eighth St	Second Priority
Elleta Blvd	Second Priority
Emily Dr	First Priority
S Fairview Rd	First Priority
N Fairview Rd	Second Priority
Faurot Dr	Second Priority
Flatwater Dr	Second Priority
Forum Blvd	First Priority
Foxfire Dr	Second Priority
E Gans Rd	Second Priority
Garden Dr	Second Priority
S Garth Ave	First Priority
W Gillespie Bridge Rd	Second Priority
W Gillespie Bridge Rd	First Priority
Gipson Ct	Second Priority
Glasgow Dr	Second Priority
Glen Eagle Dr	Second Priority
Grace Ln	Second Priority
Grant Ln	Second Priority
Grayson Dr	Second Priority
W Green Meadows Rd	First Priority
S Greenwood Ave	Second Priority
Handley Pl	Second Priority
Hanover Blvd	Second Priority
Highland Dr	Second Priority
Highlands Pkwy	Second Priority
Highridge Dr	Second Priority
Hilda St	Second Priority
Hillshire Dr	Second Priority
Hinkson Ave	Second Priority
Hodgsdon Mill Dr	Second Priority
Holly Ave	Second Priority
Hulen Dr	Second Priority
Jackson St	Second Priority
Kai Dr	Second Priority
Katy Ln	Second Priority
N Keene St	First Priority
Kelsey Dr	Second Priority
Kenilworth Dr	Second Priority
Kunlun Dr	Second Priority
Kyle Dr	Second Priority
La Rail Dr	Second Priority
Lacewood Dr	Second Priority
Lake Valley Ln	Second Priority
Laurel Drive	Second Priority
Lemone Industrial Blvd	First Priority
Lenoir St	Second Priority
E Leslie Ln	First Priority
Limerick Ln	Second Priority
Lloyd Dr	Second Priority
Loch Ln	Second Priority
Longford's Mill Dr	Second Priority
S Louisville Dr	Second Priority

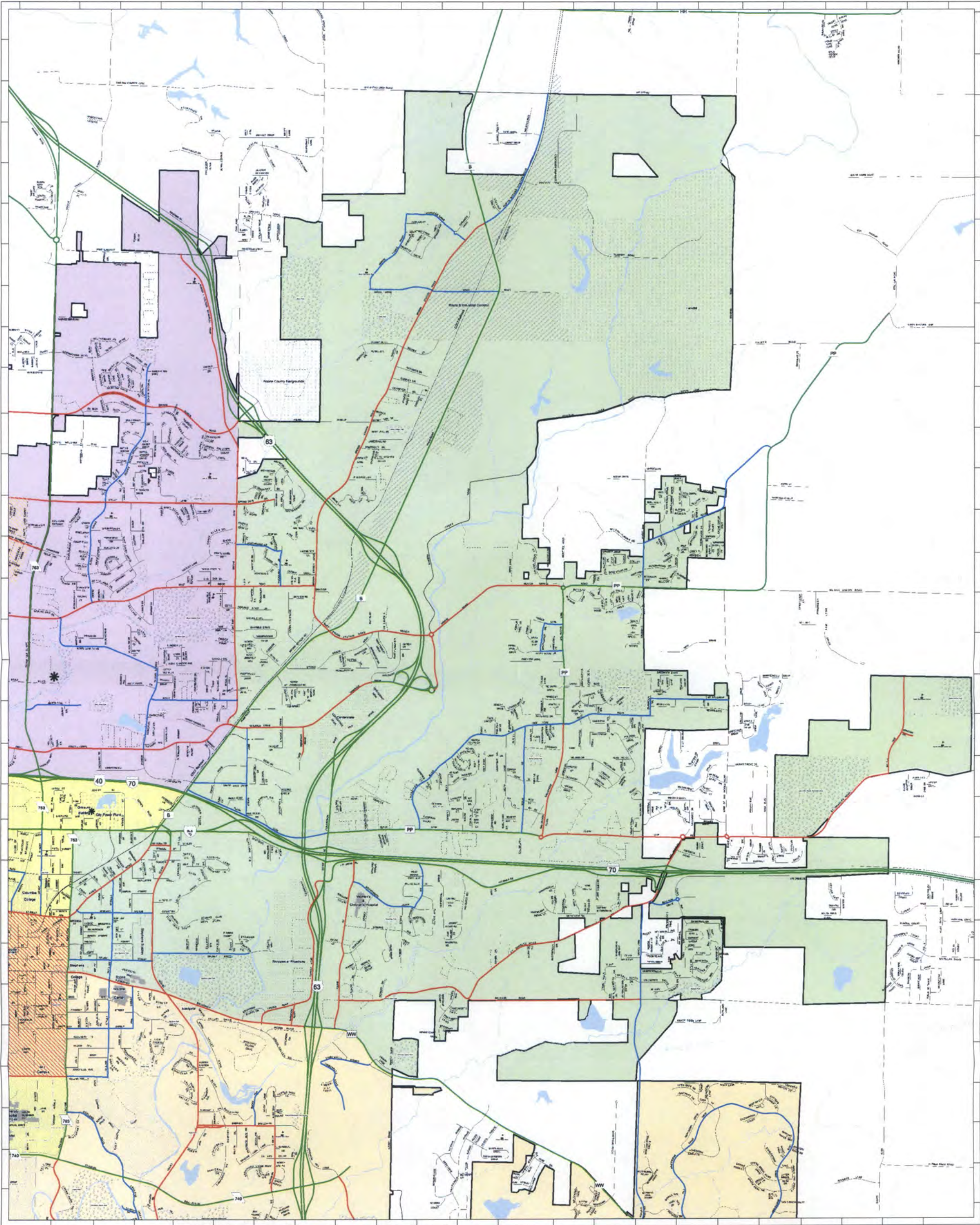
Lynnwood Dr	Second Priority
Mace Dr	Second Priority
Maguire Blvd	First Priority
Manor Dr	Second Priority
Maplewood Dr	Second Priority
Martin Dr	Second Priority
Martinshire Dr	Second Priority
McKee St	Second Priority
Meadow View Dr	Second Priority
Mexico Gravel Rd	First Priority
Mick Deaver Dr	First Priority
Mikel St	Second Priority
Mills Dr	Second Priority
Muirfield Dr	Second Priority
E New Haven Rd	Second Priority
E Nifong Blvd	First Priority
N North Browns Station Rd	Second Priority
W North Cedar Lake Dr	Second Priority
Northland Dr	Second Priority
Northridge Dr	Second Priority
Oakland Gravel Rd	First Priority
N Old Hwy 63	First Priority
Old Hawthorne Drive East	Second Priority
Old Hawthorne Drive West	Second Priority
S Old Mill Creek Rd	Second Priority
E Old Plank Rd	Second Priority
Outer Rd	First Priority
Overhill Rd	Second Priority
Oxford Dr	Second Priority
Paris Rd	First Priority
Park De Ville Dr	Second Priority
Parkade Blvd	Second Priority
Parker St	Second Priority
Planter Rd	Second Priority
Ponderosa St	Second Priority
Prairie Ln	Second Priority
Primrose Dr	First Priority
Proctor Dr	Second Priority
N Providence Rd	First Priority
Rain Forest Pkwy	First Priority
Rainbow Trout Dr	Second Priority
Range Line St	Second Priority
Red Bay Creek Rd	Second Priority
Redbud Ln	Second Priority
Rice Rd	Second Priority
E Richland Rd	First Priority
Ridgefield Rd	Second Priority
Ridgemont	Second Priority
Rock Quarry Rd	First Priority
Rock Quarry Rd	Second Priority
N Roger I Wilson Memorial Dr	First Priority
Rogers St	First Priority
S Rolling Hills Rd	Second Priority
Rollingwood Dr	Second Priority
Rollins Rd	Second Priority
Roosevelt Ave	Second Priority
Rothwell Dr	Second Priority
Royal Lytham Dr	Second Priority
Scott Blvd	First Priority
N Seventh St	Second Priority
W Sexton Rd	Second Priority

Shamrock Dr	Second Priority
Shepard Blvd	First Priority
Silvey St	Second Priority
S Sinclair Rd	Second Priority
Smiley Ln	First Priority
Smith Dr	Second Priority
Smoky Mountain Ct	Second Priority
E Southampton Dr	First Priority
W Southampton Dr	Second Priority
Spartan Dr	First Priority
Springdale Dr	First Priority
E St Charles Rd	First Priority
Stalcup St	Second Priority
Stanford Dr	Second Priority
State Farm Pkwy	First Priority
Summit Drive	Second Priority
W Stewart Rd	First Priority
Sunflower St	First Priority
Sunset Dr	First Priority
Sylvan Ln	Second Priority
Terry Ln	Second Priority
W Texas Ave	First Priority
E Thompson Rd	Second Priority
Thornbrook Ter	Second Priority
Timber Ln	Second Priority
Timberhill Rd	Second Priority
Trimble Rd	First Priority
University Ave	Second Priority
Vandiver Dr	First Priority
W Vawter School Rd	First Priority
Victoria Dr	Second Priority
Waco Rd	Second Priority
Wales Dr	First Priority
E Walnut St	Second Priority
S West Blvd	First Priority
Westwind Dr	Second Priority
White Gate Dr	Second Priority
White Oak Ln	Second Priority
Wilkes Blvd	Second Priority
N William St	Second Priority
Wolf Creek Ct	Second Priority
Wood Hill Rd	Second Priority
Woodland Dr	Second Priority
Woodridge Dr	Second Priority
E Worley St	First Priority
Wren Wood Dr	Second Priority
Wyatt Ln	Second Priority
Zoe Ln	Second Priority

"B"







Snow Route Priority
City First Priority
City Second Priority
MODOT

City Priority Areas
Downtown Priority Area
Priority Neighborhoods

Public Works Facilities
Grissum Building - Operations
Salt Dome
Schools

Interstate or US Highways
State Road
Ramp
Regular

Regular
Private, Not Named
Private, Named

Trails
Railroad
City Parks

Campus
Cemetery
Commercial
Government

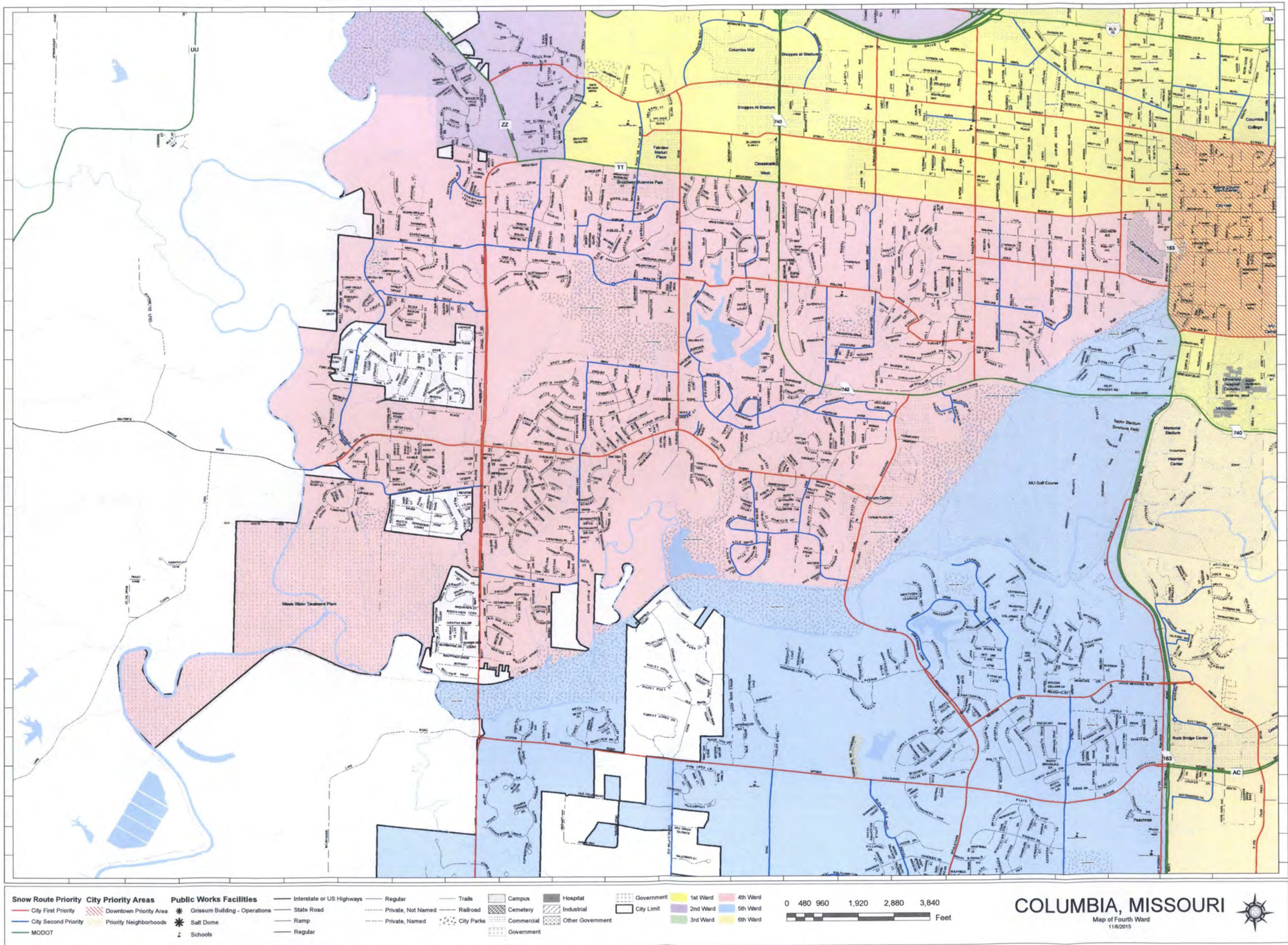
Hospital
Industrial
Other Government
Government

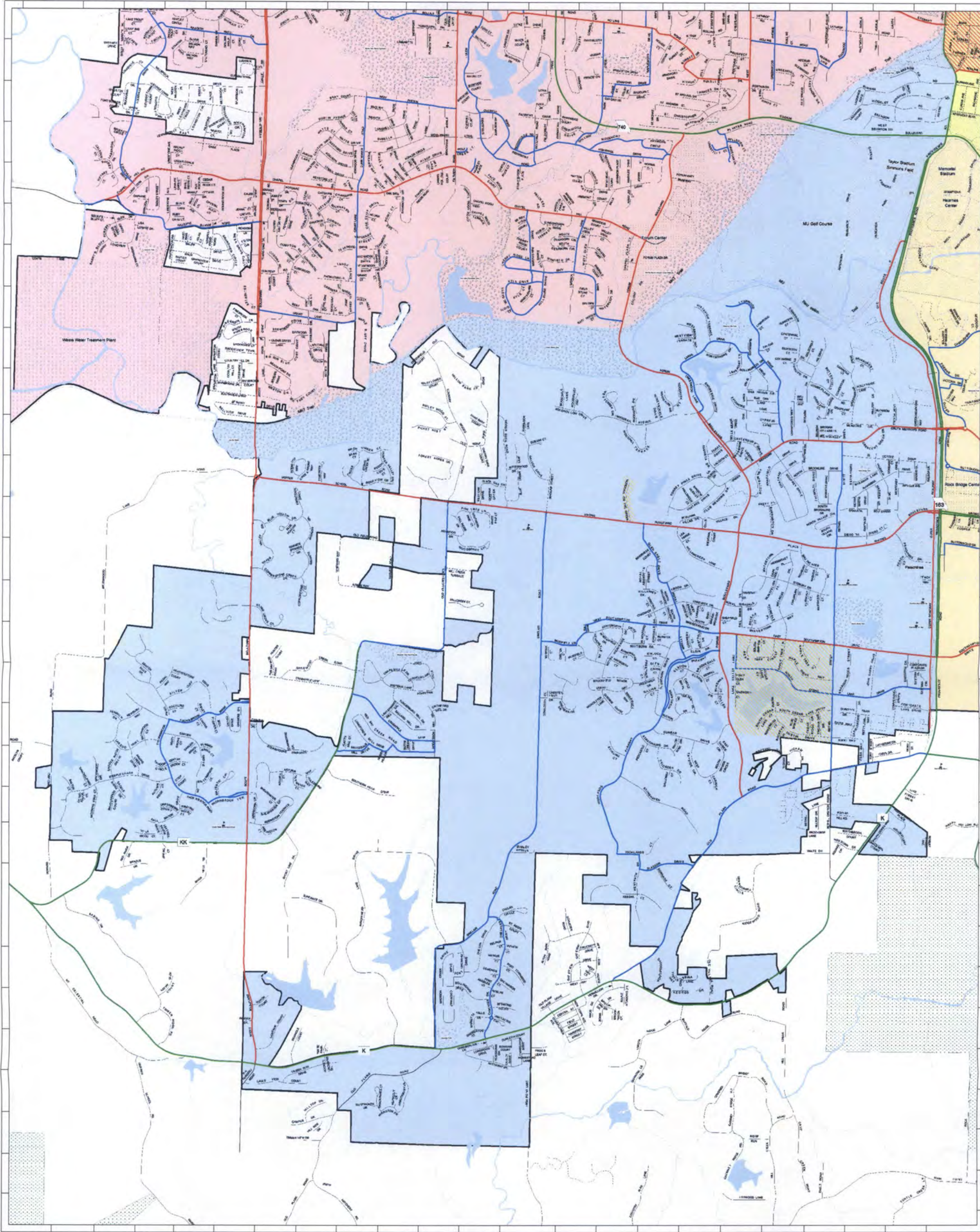
City Limit

0 5501,100 2,200 3,300 4,400
Feet

COLUMBIA, MISSOURI
Map of Third Ward
11/6/2015

1st Ward
2nd Ward
3rd Ward
4th Ward
5th Ward
6th Ward





Snow Route Priority

- City First Priority
- City Second Priority
- MODOT

City Priority Areas

- Downtown Priority Area
- Priority Neighborhoods

Public Works Facilities

- Grissum Building - Operations
- Salt Dome
- Schools

Interstate or US Highways

- State Road
- Ramp
- Regular

Regular

- Private, Not Named
- Private, Named

Trails

- Railroad
- City Parks

Campus

- Cemetery
- Commercial
- Government

Hospital

- Industrial
- Other Government
- Government

City Limit

- City Limit

1st Ward

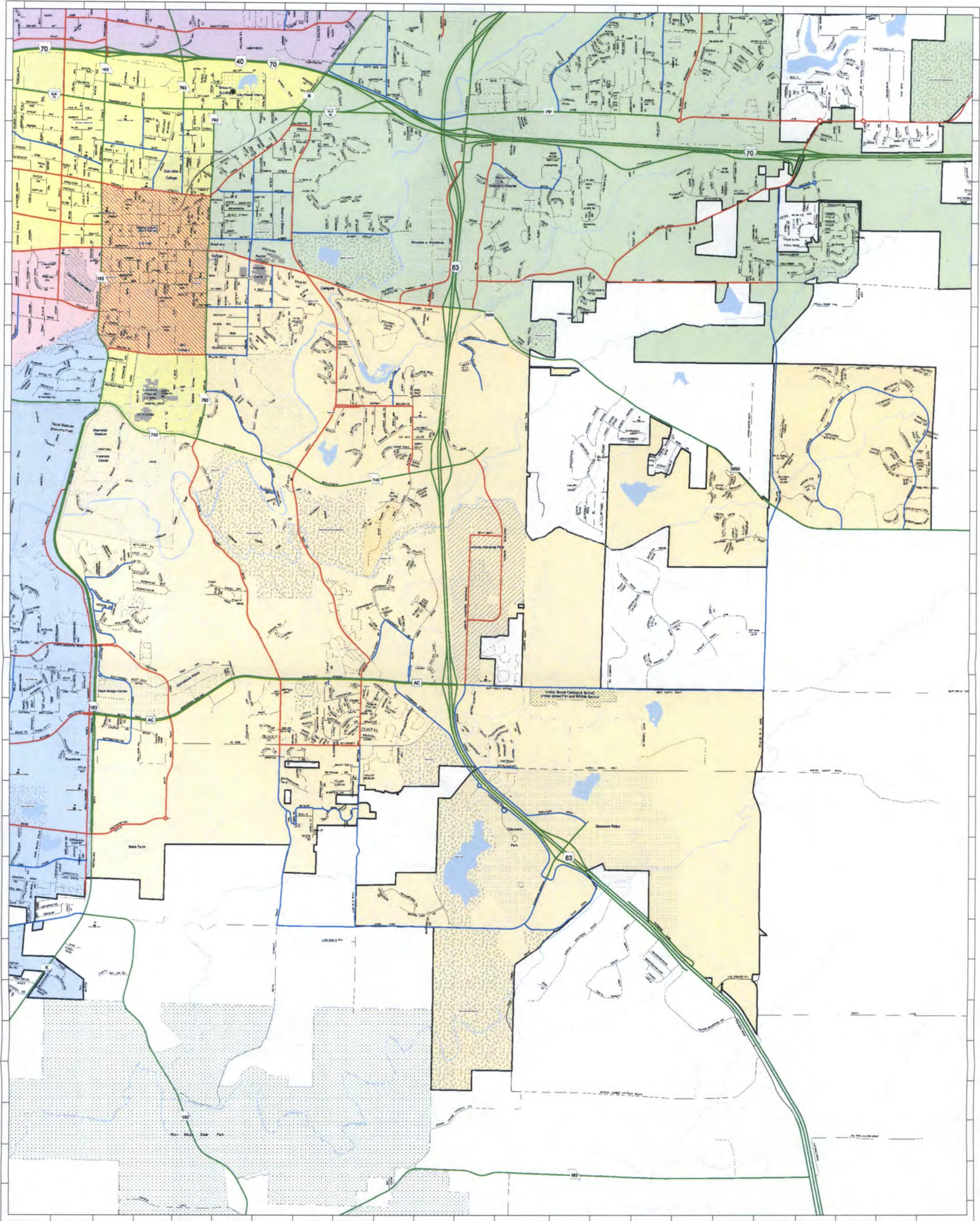
- 2nd Ward
- 3rd Ward
- 4th Ward
- 5th Ward
- 6th Ward

0 487.5975 1,950 2,925 3,900 Feet

COLUMBIA, MISSOURI

Map of Fifth Ward
11/8/2015





0 550 1,100 2,200 3,300 4,400
Feet

- | | | | | | | | | |
|----------------------------|----------------------------|--------------------------------|---------------------------|--------------------|------------|------------|------------------|----------|
| Snow Route Priority | City Priority Areas | Public Works Facilities | Interstate or US Highways | Regular | Trails | Campus | Hospital | 1st Ward |
| City First Priority | Downtown Priority Area | Griseum Building - Operations | State Road | Private, Not Named | Railroad | Cemetery | Industrial | 2nd Ward |
| City Second Priority | Priority Neighborhoods | Salt Dome | Ramp | Private, Named | City Parks | Commercial | Other Government | 3rd Ward |
| MODOT | | Schools | Regular | | | Government | Government | 4th Ward |
| | | | | | | | | 5th Ward |
| | | | | | | | | 6th Ward |

COLUMBIA, MISSOURI

Map of Sixth Ward
11/8/2015



EXHIBIT C

ADDITIONAL FIRST PRIORITY SNOW ROUTES

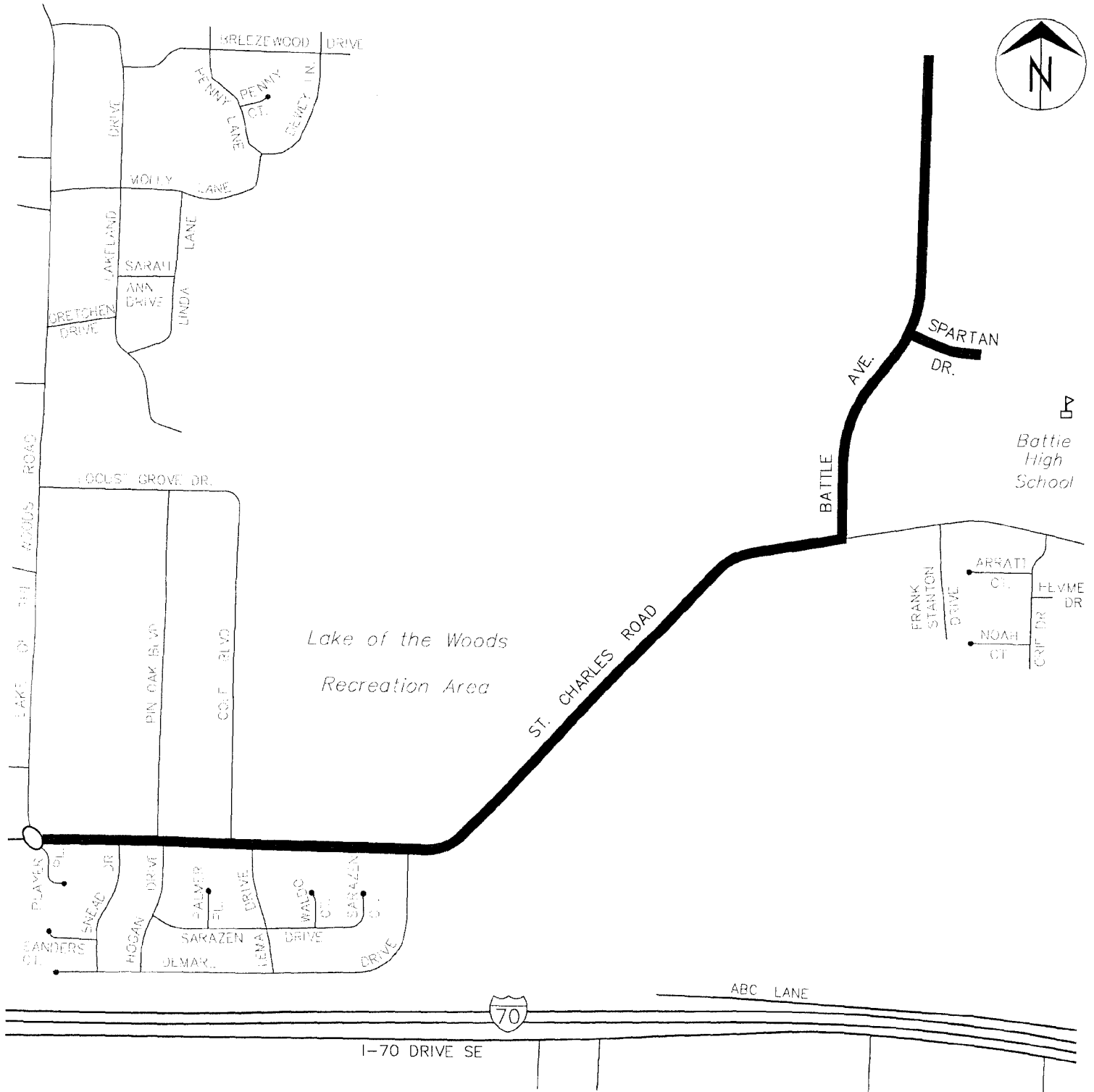


EXHIBIT D

ADDITIONAL SECOND PRIORITY SNOW ROUTES

