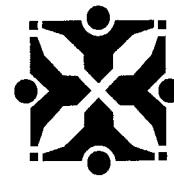


City of Columbia

701 East Broadway, Columbia, Missouri 65201



Agenda Item Number: R 127-15

Department Source: Public Works

To: City Council

From: City Manager & Staff

Council Meeting Date: 8/3/2015

Re: Long Term Closure for Portions of Street, Sidewalk and Alley along Elm Street and S. Ninth Street for Construction of a Mixed Use Building at 225 S. Ninth Street

Documents Included With This Agenda Item

Council Memo, Resolution/Ordinance, Traffic Control Plan

Supporting documentation includes: Misc Correspondence, Contact Log, Bus Route Map

Executive Summary

Authorizing McAlester Park, LLC and Trittenbach Development to close one lane of Elm Street between S. Eighth Street and S. Ninth Street; the alley between Elm Street and Locust Street; the sidewalk along Elm Street between S. Eighth Street and S. Ninth Street; and shifting sidewalk access from the west side to the east side of S. Ninth Street between Elm Street and the alley from August 5, 2015 to August 1, 2016, to facilitate construction of a mixed use building at 225 S. Ninth Street.

Discussion

McAlester Park, LLC and Trittenbach Development are seeking permission to close the westbound lane of Elm Street between S. Eighth Street and S. Ninth Street; the alley between Elm Street and Locust Street; the sidewalk along the north side of Elm Street between S. Eighth Street and S. Ninth Street; and shifting sidewalk access from the west side to the east side of S. Ninth Street between Elm Street and the alley, to facilitate construction of a mixed use building at 225 South Ninth Street (Shakespeare's location). Per input from the Missouri Theater, the pedestrian access on the west side of S. Ninth Street will be covered for public safety once vertical construction has commenced. The handicapped spaces on the east side of S. Ninth Street will be moved to the north side during the duration of the lane shift. These closures are scheduled to begin August 5, 2015 to August 1, 2016.

COMO Connect Gold Routes 2A and 2B have a total of four bus stops on Elm Street. Due to expected traffic congestion and narrow roadways, staff has moved the bus stops one block north to Locust Street (see attached detour map). New route maps have been printed reflecting this change.

On behalf of McAlester Park, LLC and Trittenbach Development, Columbia Civil Engineering Group contacted business owners in the area and the Downtown Community Improvement District (CID). The Executive Director of the CID responded with two concerns.

- 1. Surrounding businesses will be negatively impacted by the street closure and recommends maintaining at least one lane of traffic.**

The eastbound lane of Elm Street between S. Eighth & S. Ninth Street will remain open

City of Columbia

701 East Broadway, Columbia, Missouri 65201



2. Oppose proposal of closing the alley to place a trash compactor; recommend that trash service be built within the building for residents and commercial business use.

The trash compactor will not be placed in the alley. Per discussions with the Director of Public Works and the Building and Site Development Manager, the trash service issues will be handled during the plan review process.

Additionally, staff has approved a request from McAlester Park, LLC and Trittenbach Development for a short term closure of both lanes of Elm Street, between S. Eighth and S. Ninth streets from August 5 through August 15, 2015, to cap three (3) remaining sewer lines, tap one (1) sewer line for new service, and install (1) tap for a new waterline connection. Once this work is completed, the eastbound lane of Elm Street will reopen.

Staff has reviewed the attached traffic control plans and has no issues. McAlester Park, LLC and Trittenbach Development shall be responsible for all signs and barricades necessary for the protection and convenience of the general public, and shall be responsible for notifications to the media and emergency personnel.

Fiscal Impact

Short-Term Impact: None

Long-Term Impact: None

Vision, Strategic & Comprehensive Plan Impact

Vision Impact: Not Applicable

Strategic Plan Impact: Not Applicable

Comprehensive Plan Impact: Not Applicable

Suggested Council Action

Adopt the resolution authorizing McAlester Park, LLC and Trittenbach Development's request for partial street, sidewalk and alley closures relating to the construction of a mixed use building at 225 S. Ninth Street from August 5, 2015 to August 1, 2016.

Legislative History

None


Department Approved


City Manager Approved

A RESOLUTION

authorizing the temporary closure of the westbound vehicular lane on Elm Street between Eighth Street and Ninth Street, the alley between Elm Street and Locust Street, the sidewalk on the north side of Elm Street between Eighth Street and Ninth Street, and shifting sidewalk access from the west side to the east side of Ninth Street between Elm Street and the alley to facilitate the construction of a mixed use building at 225 South Ninth Street.

BE IT RESOLVED BY THE CITY COUNCIL OF THE CITY OF COLUMBIA, MISSOURI, AS FOLLOWS:

SECTION 1. The City Council hereby authorizes McAlester Park, LLC and Trittenbach Development to temporarily close a portion of the westbound vehicular lane on Elm Street between Eighth Street and Ninth Street, the alley between Elm Street and Locust Street, the sidewalk on the north side of Elm Street between Eighth Street and Ninth Street, and shifting sidewalk access from the west side to the east side of Ninth Street between Elm Street and the alley, as shown on "Exhibit A," from August 5, 2015 to August 1, 2016 to facilitate the construction of a mixed use building at 225 South Ninth Street.

SECTION 2. McAlester Park, LLC and Trittenbach Development shall close portions of the street, alley and sidewalk only in accordance with the closure plan submitted and approved by the City's Director of Public Works. In the interest of public safety, the Director of Public Works may require additional traffic control measures by notifying McAlester Park, LLC and Trittenbach Development, in writing, of such requirements. McAlester Park, LLC and Trittenbach Development shall be responsible for all signs and barricades necessary for the protection and convenience of the general public and shall be responsible for the repair of the street, alley and sidewalk due to any damage caused by the construction activity. McAlester Park, LLC and Trittenbach Development shall be responsible for notifications to the media and emergency personnel.

SECTION 3. McAlester Park, LLC and Trittenbach Development shall proceed with construction activities which require the street, alley and sidewalk closures without unnecessary delay so as to minimize disruption to the public. Failure to proceed without unnecessary delay may result in the revocation of the street, alley and sidewalk closure permit by the City Council.

ADOPTED this _____ day of _____, 2015.

ATTEST:

City Clerk

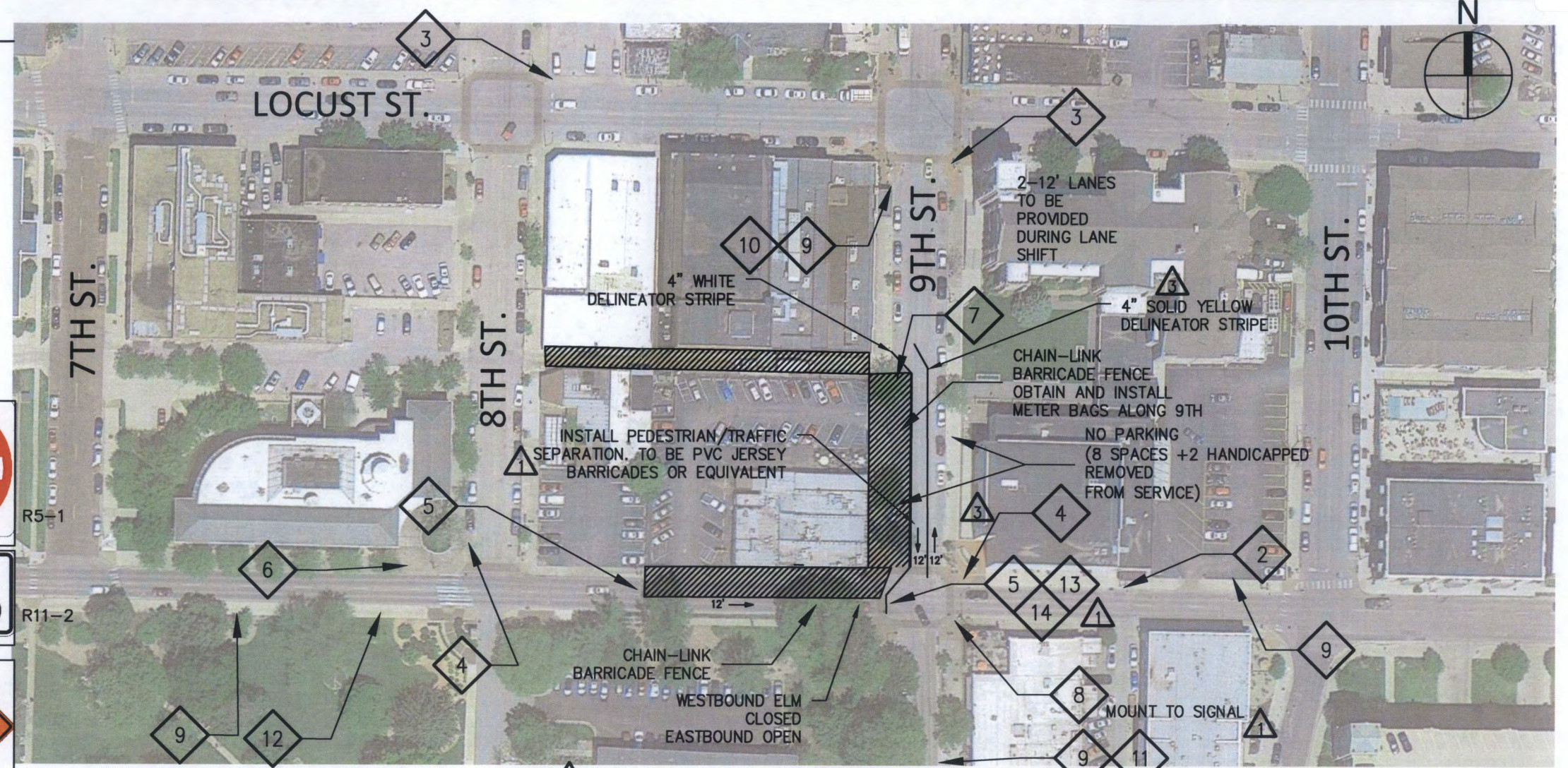
Mayor and Presiding Officer

APPROVED AS TO FORM:

City Counselor

KEYNOTES

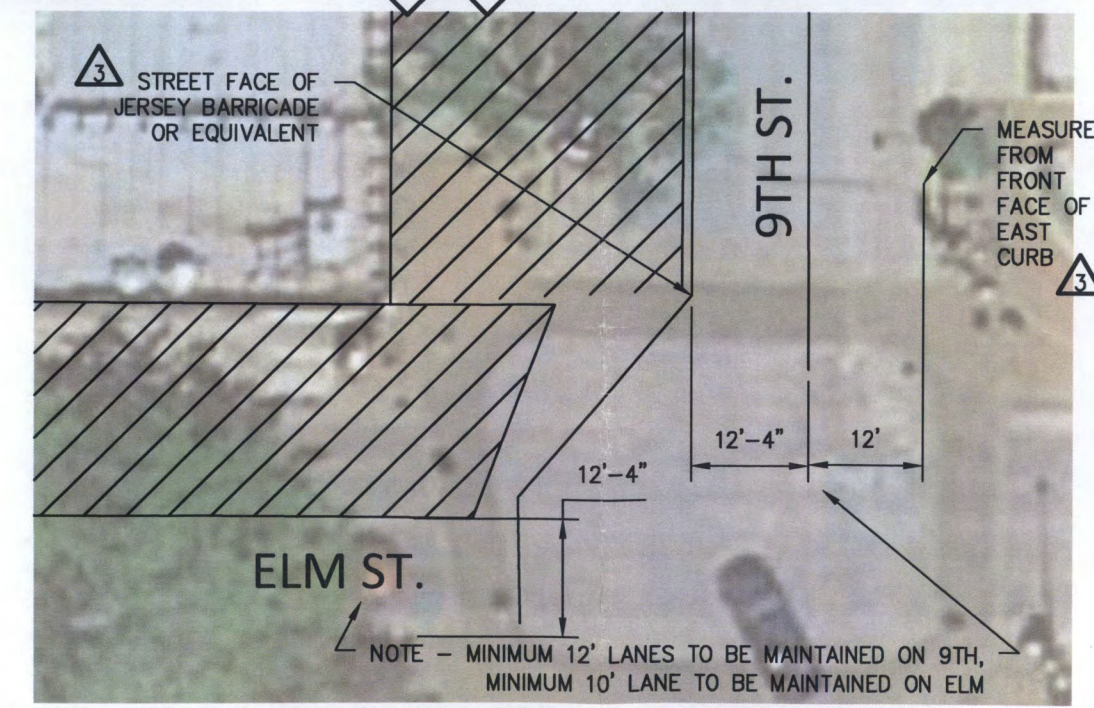
- 1 ROAD CLOSED TO THRU TRAFFIC
- 2 ROAD CLOSED AHEAD
- 3 DETOUR
- 4 DETOUR
- 5 INSTALL 2 TYPE III BARRICADES WITH FLASHING LIGHTS
- 6 END DETOUR
- 7 NO RIGHT TURN
- 8 NO LEFT TURN
- 14 DO NOT ENTER
- 13 ROAD CLOSED
- 12 ONE LANE ROAD AHEAD
- 11 S
- 10 S
- 9 ROAD WORK AHEAD



1 ELM CLOSURE PLAN

GENERAL NOTES

1. ELM TO BE ONE LANE FROM AUGUST 5, 2015 TO AUGUST 1, 2016.
2. CONTRACTOR WILL OBTAIN NECESSARY PARKING METER BAGS AND PAY ASSOCIATED FEES.
3. A TOTAL OF 8 PARKING SPACES WILL BE REMOVED FROM SERVICE ALONG 9TH FOR THE DURATION OF THE CLOSURE. IN ADDITION TWO HANDICAPPED SPACES WILL BE REMOVED.
4. A 4" WHITE LANE DELINEATOR STRIPE WILL BE PAINTED ON THE PAVEMENT DURING THE DURATION OF THE LANE SHIFT AT THE PEDESTRIAN LANE. A 4" YELLOW DELINEATOR STRIPE WILL ALSO BE INSTALLED. IT WILL BE REMOVED ONCE CONSTRUCTION HAS BEEN COMPLETED.
5. WESTBOUND ELM CLOSED. EASTBOUND ELM OPEN.
6. IT IS ANTICIPATED THAT DURING VERTICAL CONSTRUCTION, SOME TEMPORARY CLOSURES OF ELM WILL BE REQUIRED FOR MATERIAL DELIVERY.



2 ELM CLOSURE PLAN - LANE WIDTH DETAIL

COLUMBIA
Civil Engineering Group
Columbia, MO
3301 BERRYWOOD DRIVE SUITE 103 COLUMBIA, MO 65201
PHONE (573) 696-7821

MO. ENG. CORP
#2013000149
EXP. 12-31-2015

ELM CLOSURE PLAN 9TH AND ELM COLUMBIA, MISSOURI			
DATE	SCALE	FIELD BOOK	REVISION
7/14/15	AS SHOWN	M. HALL	
DRAWN			
APPROVED			

PROJECT NO.
115002-1

SHEET NO.
C1.1

- 1

SIDEWALK CLOSED

R9-9
- 2

SIDEWALK CLOSED AHEAD

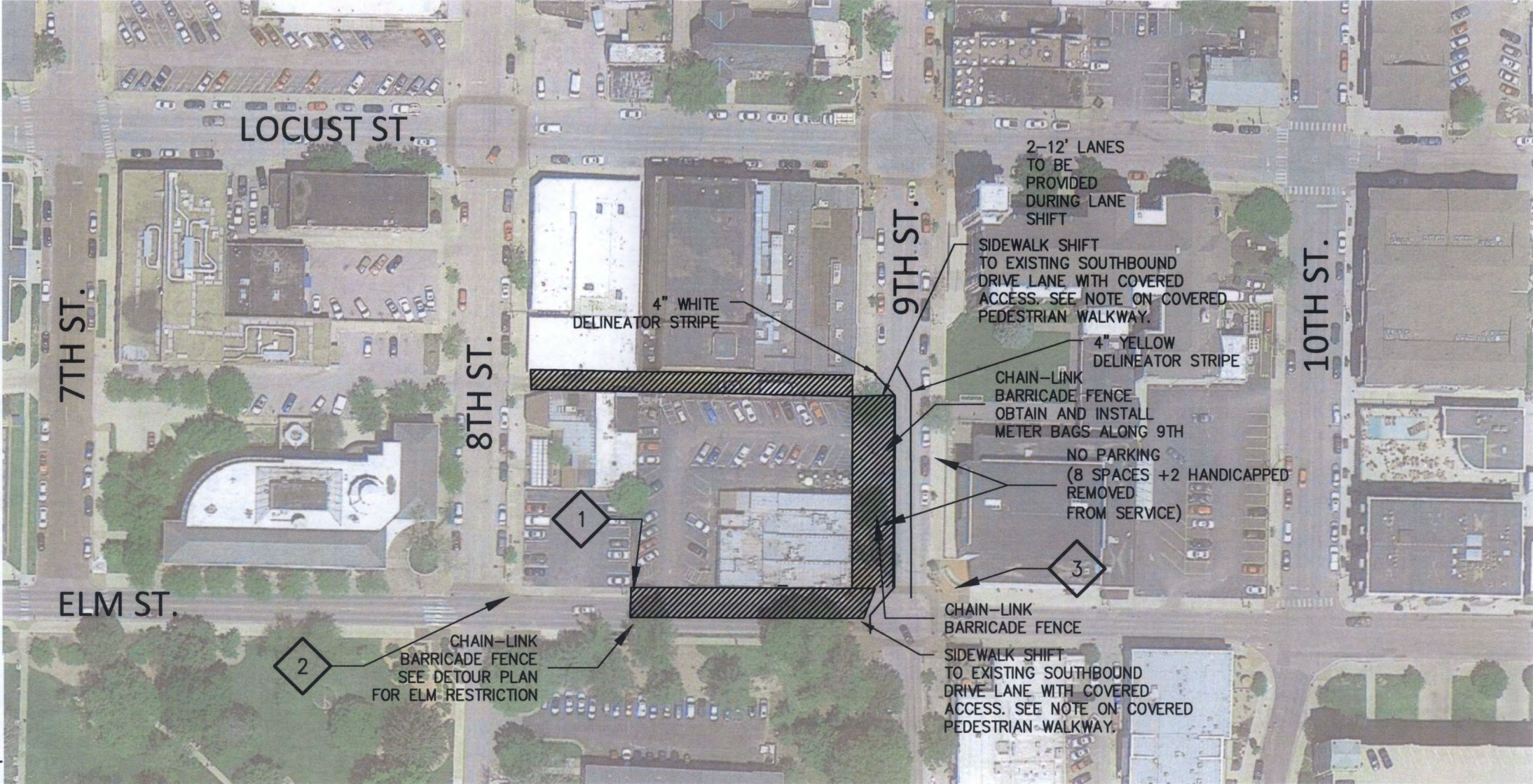
CROSS HERE

R9-11
- 3

SIDEWALK CLOSED

CROSS HERE

R9-11A

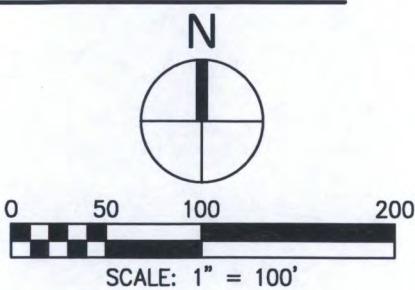


GENERAL NOTES

1. CLOSED AND SHIFTED FROM AUGUST 5, 2015 TO AUGUST 1, 2016.
2. CONTRACTOR WILL OBTAIN NECESSARY PARKING METER BAGS AND PAY ASSOCIATED FEES.
3. A TOTAL OF 8 PARKING SPACES WILL BE REMOVED FROM SERVICE ALONG 9TH FOR THE DURATION OF THE CLOSURE. IN ADDITION TWO HANDICAPPED SPACES WILL BE REMOVED.
4. A 4" WHITE LANE DELINEATOR STRIPE WILL BE PAINTED ON THE PAVEMENT DURING THE DURATION OF THE LANE SHIFT AT THE PEDESTRIAN LANE. A 4" YELLOW DELINEATOR STRIPE WILL ALSO BE INSTALLED. IT WILL BE REMOVED ONCE CONSTRUCTION HAS BEEN COMPLETED.
5. WHEN REQUIRED TO MEET PUBLIC SAFETY AND TO MAINTAIN PEDESTRIAN ACCESS ALONG THE WEST SIDE OF 9TH, SCAFFOLDING WILL BE PROVIDED TO AN ELEVATION THAT ALLOWS ACCESS.
- 5.1. SCAFFOLDING SHALL BE DESIGNED BY SCAFFOLDING COMPANY.

1

SIDEWALK CLOSURE PLAN



SIDEWALK CLOSURE PLAN 9TH AND ELM COLUMBIA, MISSOURI	DATE	6/21/2015	SCALE	AS SHOWN
	DRAWN	M. HALL	FIELD BOOK	
	APPROVED		REVISION	

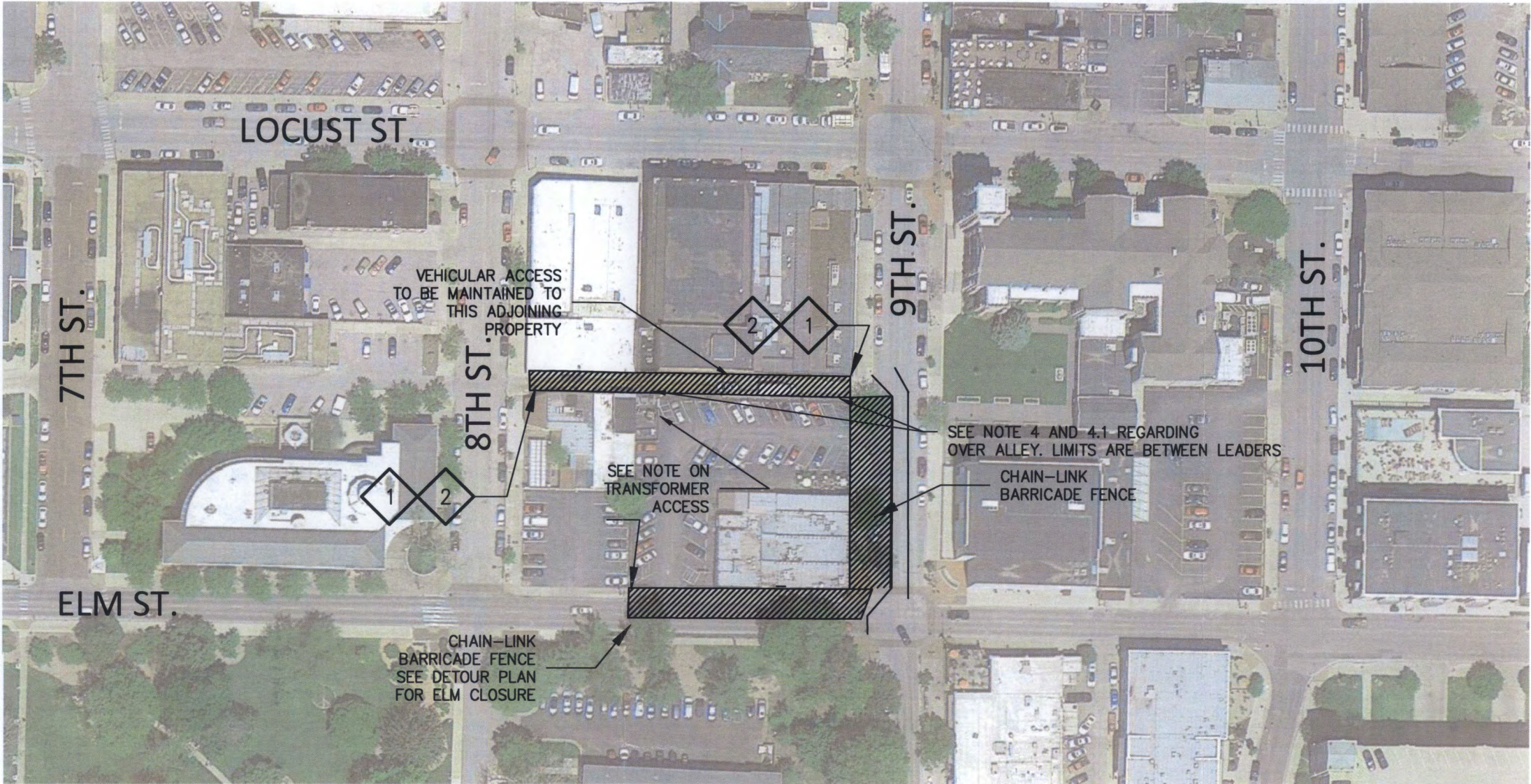
KEYNOTES

1

ROAD CLOSED
TO
THRU TRAFFIC

2

INSTALL 2 TYPE III
BARRICADES WITH
FLASHING LIGHTS



GENERAL NOTES

- 1

1. ALLEY CLOSURE TO BE FROM AUGUST 5, 2015 – AUGUST 1, 2016. ALLEY WILL BE RE-OPENED PRIOR TO THE DATE NOTED ABOVE SHOULD CONSTRUCTION PROGRESS ALLOW WITHOUT ENDANGERING PUBLIC SAFETY.
- 2

2. SHOULD ACCESS TO THE TRANSFORMER AT THE MIDDLE OF THE ALLEY OR ACCESS TO THE ADJACENT BUILDINGS BE REQUIRED, WE WILL COORDINATE SAID TEMPORARY ACCESS WITH THE ADJACENT PROPERTY OWNERS AS NECESSARY.
- 3

3. PERIODIC ACCESS TO THE MISSOURI THEATER WILL BE COORDINATED WITH THE UNIVERSITY OF MISSOURI.
- 4

4. WHEN REQUIRED TO MEET PUBLIC SAFETY AND TO MAINTAIN ACCESS TO THE ALLEY, COVERED SCAFFOLDING WILL BE PROVIDED TO AN ELEVATION THAT ALLOWS ACCESS FOR A BOX TRUCK.
- 4.1

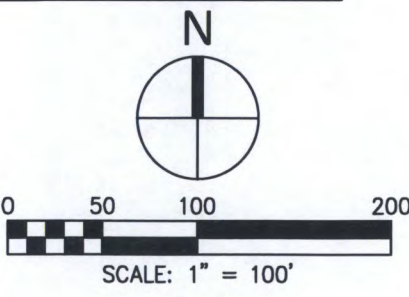
4.1. SCAFFOLDING SHALL BE DESIGNED BY SCAFFOLDING COMPANY.
- 5

5. ACCESS TO DUMPSTERS IN ALLEY TO BE COORDINATED WITH COLUMBIA PUBLIC WORKS – SOLID WASTE.

1

SIDEWALK CLOSURE PLAN

1"=100'



COLUMBIA

Civil Engineering Group

Columbia, MO

3301 BERRYWOOD DRIVE SUITE 103 COLUMBIA, MO 65201

PHONE (573) 999-7821

MO. ENG. CORP

#2013000149

EXP. 12-31-2015

ALLEY CLOSURE PLAN

9TH AND ELM

COLUMBIA, MISSOURI

DATE: 6/29/2015

DRAWN: M. HALL

APPROVED:

SCALE: AS SHOWN

FIELD BOOK

REVISION

PROJECT NO. 115002-1

SHEET NO. C1.3



SUPPORTING DOCUMENTS INCLUDED WITH THIS AGENDA ITEM ARE AS FOLLOWS:

Misc Correspondence, Contact Log, Bus Route Map

June 22, 2015

CCEG #115002-1

City of Columbia
ATTN: Mayor and City Council
701 E. Broadway
Columbia, MO 65201

RE: Long Term Sidewalk, Alley and Road Closure 9th and Elm

Dear Mayor and Council:

On behalf of McAlester Park, LLC and Trittenbach Development, we have prepared a traffic control plan for long-term closure of a portion of Elm Street, sidewalks and the alley in the vicinity of 9th and Elm.

Specifically, consider the following:

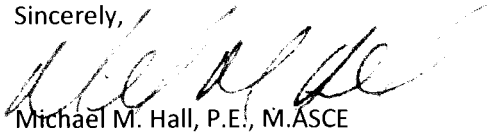
- These plans are to allow the demolition of the existing structures at the NW corner of 9th and Elm and the construction of a new lot line to lot line building, the reconstruction of sidewalks and curb and gutter.
- We have coordinated and continue to work with the Missouri Theater/University of Missouri to allow access to the Theater at the times they need access to the alley.
- Columbia Water and Light will have access to their transformers in the alley during the duration of the closure.
- We have discussed this plan with City staff as well as the CID and the Missouri Theater and we mutually believe that this plan will result in the least impact to the adjoining businesses as well as the general public. Please note the following:
 - The Elm Street closure has been limited to only the westbound lane per the input of the CID.
 - The sidewalks on both side of 9th Street will remain open. The west side pedestrian access on 9th will be shifted to the east and also require a lane shift on 9th. Parking on both sides of 9th will be removed from service during this action. The pedestrian access on the west side of 9th will be covered for public safety once vertical construction has commenced. This is being done per the input of the Missouri Theater. Per input of public works, the handicapped spaces on the east side of 9th will be moved to the north during the duration of the lane shift.
 - The alley will be covered for public safety once vertical construction has commenced. This is being done per the input of the Missouri Theater. This covering will be of sufficient width and height to allow for a box truck.
- These closures are from July 22nd 2015 until August 1st 2016.

June 22, 2015
City of Columbia
Page 2 of 2

- Per the requirements of the City of Columbia, this plan has been sent to the CID, Missouri Theater, Missouri United Methodist Church and the Missouri Press Association.

If you have any questions, please feel free to contact me at this office or by email at mmhall@columbiacivilengineering.com.

Sincerely,

A handwritten signature in black ink, appearing to read 'M. Hall', is written over the printed name.

Michael M. Hall, P.E., M.ASCE
Principal Engineer

Encl.

COLUMBIA

Civil Engineering Group

3301 Berrywood Drive, Suite 103

Columbia, MO 65201 (ph) 573-815-7491

June 22, 2015

CCEG #115002-1

Columbia CID

ATTN: Katie Essing – Executive Director

11 S. 10th Street

Columbia, MO 65201

RE: Long Term Sidewalk, Alley and Road Closure 9th and Elm

Dear Ms. Essing:

In accordance with the City of Columbia requirements for long-term street, sidewalk and alley closures, we are providing notice to you of our request for the long term closure of a portion of the westbound lane of Elm Street, the Alley between 8th and 9th and the sidewalk along the NW corner of 9th Street. Please note the following changes from the plan submitted on May 21st:

- The Elm Street closure has been limited to only the westbound lane per the input of the CID.
- The sidewalks on both side of 9th Street will remain open. The west side pedestrian access on 9th will be shifted to the east and also require a lane shift on 9th. Parking on both sides of 9th will be removed from service during this action. The pedestrian access on the west side of 9th will be covered for public safety once vertical construction has commenced. This is being done per the input of the Missouri Theater. Per input of public works, the handicapped spaces on the east side of 9th will be moved to the north during the duration of the lane shift.
- The alley will be covered for public safety once vertical construction has commenced. This is being done per the input of the Missouri Theater. This covering will be of sufficient width and height to allow for a box truck.

This closure is required to perform the following construction activities for the proposed building at the NW corner of 9th and Elm:

- Construction of a new building.

This closure is proposed to occur from July 22, 2015 until August 1, 2016.

In order to illustrate the work limits, we have enclosed a copy of our traffic control plans for your use. Per the City's policy, you have a right of protest by written notice to the City of Columbia Director of Public Works. If you should have any questions concerning this project, please feel free to contact me at this office or by email at mmhall@columbiacivilengineering.com.

Sincerely,



Michael M. Hall, P.E., M.ASCE
Principal Engineer

Encl.

COLUMBIA

Civil Engineering Group

3301 Berrywood Drive, Suite 103

Columbia, MO 65201 (ph) 573-815-7491

June 22, 2015

CCEG #115002-1

Missouri United Methodist Church
ATTN: Mark Pease – Facilities Assistant
204 S. Ninth Street
Columbia, MO 65201

RE: Long Term Sidewalk, Alley and Road Closure 9th and Elm

Dear Mr. Pease:

In accordance with the City of Columbia requirements for long-term street, sidewalk and alley closures, we are providing notice to you of our request for the long term closure of a portion of the westbound lane of Elm Street, the Alley between 8th and 9th and the sidewalk along the NW corner of 9th Street. Please note the following changes from the plan submitted on May 21st:

- The Elm Street closure has been limited to only the westbound lane per the input of the CID.
- The sidewalks on both side of 9th Street will remain open. The west side pedestrian access on 9th will be shifted to the east and also require a lane shift on 9th. Parking on both sides of 9th will be removed from service during this action. The pedestrian access on the west side of 9th will be covered for public safety once vertical construction has commenced. This is being done per the input of the Missouri Theater. Per input of public works, the handicapped spaces on the east side of 9th will be moved to the north during the duration of the lane shift.
- The alley will be covered for public safety once vertical construction has commenced. This is being done per the input of the Missouri Theater. This covering will be of sufficient width and height to allow for a box truck.

This closure is required to perform the following construction activities for the proposed building at the NW corner of 9th and Elm:

- Construction of a new building.

This closure is proposed to occur from July 22, 2015 until August 1, 2016.

In order to illustrate the work limits, we have enclosed a copy of our traffic control plans for your use. Per the City's policy, you have a right of protest by written notice to the City of Columbia Director of Public Works. If you should have any questions concerning this project, please feel free to contact me at this office or by email at mmhall@columbiacivilengineering.com.

Sincerely,



Michael M. Hall, P.E., M.ASCE

Principal Engineer

Encl.

COLUMBIA

Civil Engineering Group

3301 Berrywood Drive, Suite 103

Columbia, MO 65201 (ph) 573-815-7491

June 22, 2015

CCEG #115002-1

Missouri Theater
% Auxiliary & Service Operations
ATTN: John Murray, Senior Director
218 Heinkel Building
Columbia, MO 65211

RE: Long Term Sidewalk, Alley and Road Closure 9th and Elm

Dear Mr. Murray:

In accordance with the City of Columbia requirements for long-term street, sidewalk and alley closures, we are providing notice to you of our request for the long term closure of a portion of the westbound lane of Elm Street, the Alley between 8th and 9th and the sidewalk along the NW corner of 9th Street. Please note the following changes from the plan submitted on May 21st:

- The Elm Street closure has been limited to only the westbound lane per the input of the CID.
- The sidewalks on both side of 9th Street will remain open. The west side pedestrian access on 9th will be shifted to the east and also require a lane shift on 9th. Parking on both sides of 9th will be removed from service during this action. The pedestrian access on the west side of 9th will be covered for public safety once vertical construction has commenced. This is being done per the input of the Missouri Theater. Per input of public works, the handicapped spaces on the east side of 9th will be moved to the north during the duration of the lane shift.
- The alley will be covered for public safety once vertical construction has commenced. This is being done per the input of the Missouri Theater. This covering will be of sufficient width and height to allow for a box truck.

This closure is required to perform the following construction activities for the proposed building at the NW corner of 9th and Elm:

- Construction of a new building.

This closure is proposed to occur from July 22, 2015 until August 1, 2016.

In order to illustrate the work limits, we have enclosed a copy of our traffic control plans for your use. Per the City's policy, you have a right of protest by written notice to the City of Columbia Director of Public Works. If you should have any questions concerning this project, please feel free to contact me at this office or by email at mmhall@columbiacivilengineering.com.

Sincerely,



Michael M. Hall, P.E., M.ASCE
Principal Engineer
Encl.

COLUMBIA

Civil Engineering Group

3301 Berrywood Drive, Suite 103

Columbia, MO 65201 (ph) 573-815-7491

June 22, 2015

CCEG #115002-1

Missouri Press Association
ATTN: Doug Crews – MPA Executive Director
802 Locust Street
Columbia, MO 65201

RE: Long Term Sidewalk, Alley and Road Closure 9th and Elm

Dear Mr. Crews:

In accordance with the City of Columbia requirements for long-term street, sidewalk and alley closures, we are providing notice to you of our request for the long term closure of a portion of the westbound lane of Elm Street, the Alley between 8th and 9th and the sidewalk along the NW corner of 9th Street. Please note the following changes from the plan submitted on May 21st:

- The Elm Street closure has been limited to only the westbound lane per the input of the CID.
- The sidewalks on both side of 9th Street will remain open. The west side pedestrian access on 9th will be shifted to the east and also require a lane shift on 9th. Parking on both sides of 9th will be removed from service during this action. The pedestrian access on the west side of 9th will be covered for public safety once vertical construction has commenced. This is being done per the input of the Missouri Theater. Per input of public works, the handicapped spaces on the east side of 9th will be moved to the north during the duration of the lane shift.
- The alley will be covered for public safety once vertical construction has commenced. This is being done per the input of the Missouri Theater. This covering will be of sufficient width and height to allow for a box truck.


This closure is required to perform the following construction activities for the proposed building at the NW corner of 9th and Elm:

- Construction of a new building.

This closure is proposed to occur from July 22, 2015 until August 1, 2016.

In order to illustrate the work limits, we have enclosed a copy of our traffic control plans for your use. Per the City's policy, you have a right of protest by written notice to the City of Columbia Director of Public Works. If you should have any questions concerning this project, please feel free to contact me at this office or by email at mmhall@columbiacivilengineering.com.

Sincerely,



Michael M. Hall, P.E., M. ASCE
Principal Engineer
Encl.

The District • Downtown Community Improvement District
113 South 10th Street • Columbia, MO 65201 • (573) 442-6816
DiscoverTheDistrict.com



Michael M. Hall, P.E., M.ASCE
Principal Engineer
Columbia Civil Engineering Group
3301 Berrywood Drive, Suite 103
Columbia, MO 65201

July 15, 2015

Dear Mr. Hall,

The Downtown CID appreciates your time in providing an update during the June 16 Economic Development Committee meeting regarding the proposed long term street, alley and sidewalk closures in relation to the 9th and Elm building.

The Downtown CID would like to express concern and request additional consideration for the following items:

- Long Term Closure of Elm Street
 - o This street closure will potentially result in traffic congestion and difficult driving conditions in the downtown for a significant length of time. We are concerned that surrounding businesses will be negatively impacted by this closure and recommend maintaining at least one lane of traffic.
- Trash Service for New Building
 - o We oppose the proposal of closing the alley to place a trash compactor and recommend that trash service be built within the building for the residents and commercial business use.

As our downtown continues to grow and thrive, it is imperative for new projects to consider the potential impact, both of construction and upon completion, to the overall downtown community.

If you have questions or would like to discuss this matter in more detail, please contact me at (573) 442-6816.

Sincerely,

Katie Essing
Executive Director, Downtown Community Improvement District

CID Board

Blake Danuser
Binghams

Adam Dushoff
Addison's

Tony Grove
Grove Construction

Christina Kelley
Makes Scents

Tom Mendenhall
The Lofts at 308 Ninth

Michael McClung
Quinton's, Resident

Allan Moore
Moore & Shryock

John Ott
Paramount Building

Tom Schwarz
Landmark Bank

Deb Sheals
Historic Preservation Consulting

Ben Wade
Guitarfinder

Michael Wagner
Boone County National Bank

Marti Waigandt
808 Cherry

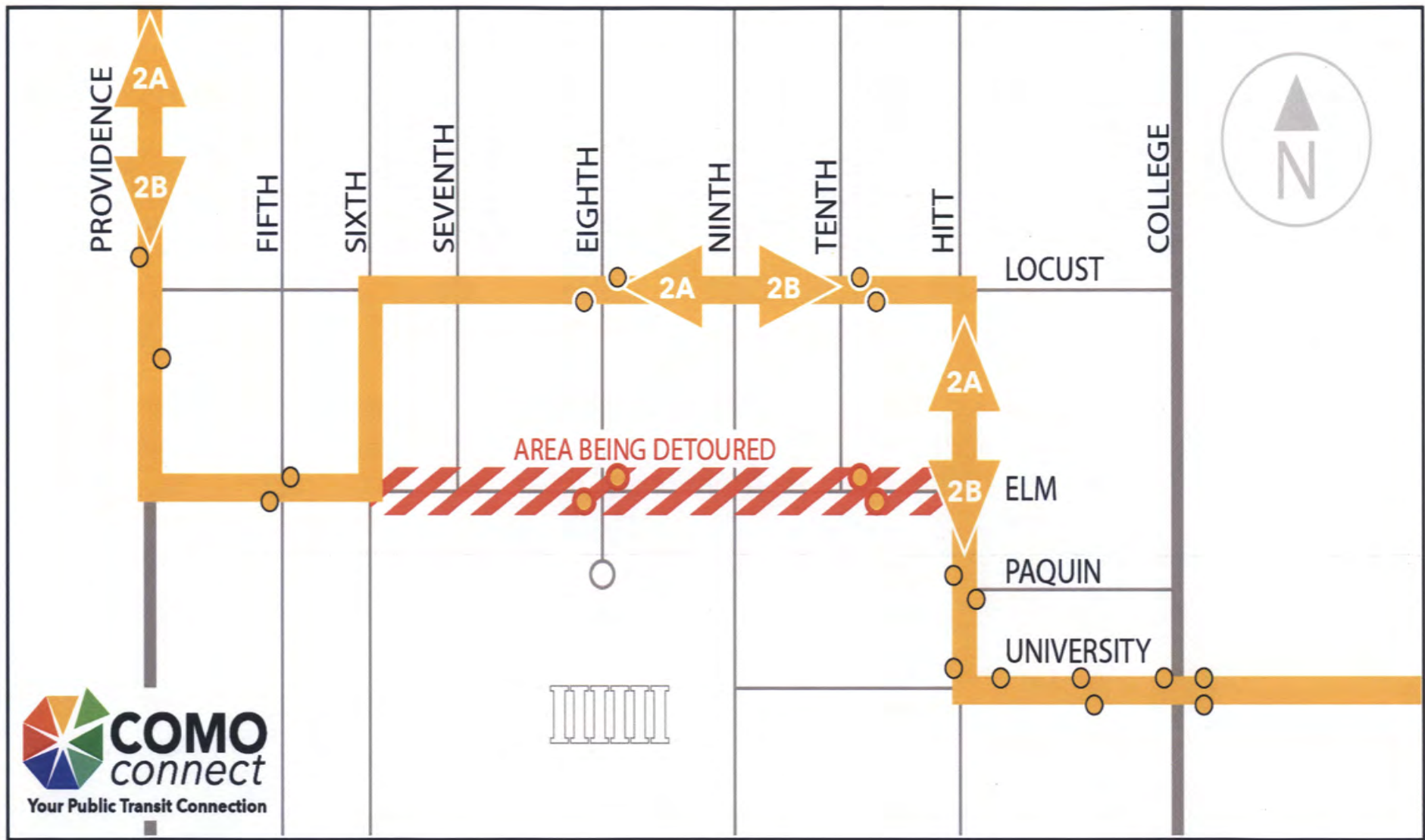
Skip Walther
Walther, Antel, Stamper & Fischer

Andrew Waters
Columbia Daily Tribune

Cc: John Glascock, City of Columbia
Shane Creech, City of Columbia

Date & Time**Contact Information**

6/24/15, 3:15 pm.	Missouri Theater (John) Left a message in reference to the closure.
6/24/15, 3:17 pm.	UMC (Mark Pease) Mr Pease was aware of the potential closure. Parking along 9 th Street was his only concern, but indicated they would work around it.
6/24/15, 3:20 p.m.	Missouri Press (Doug Crews) Left a message in reference to the closure.
6/24/15, 3:24 pm.	Downtown CID (Katie Essing) Ms. Essing was attending a conference. Her staff suggested contacting her by-email, which was done on 6/24/15.



ROUTES: #2 Gold A, #2 Gold B