

# City of Columbia

701 East Broadway, Columbia, Missouri 65201



**Agenda Item Number:** B 317-14  
**Department Source:** Parks and Recreation  
**To:** City Council  
**From:** City Manager & Staff  
**Council Meeting Date:** October 6, 2014  
**Re:** Cosmo-Bethel Park Park Improvements

## Documents Included With This Agenda Item

Council memo, Resolution/Ordinance  
**Supporting documentation includes:** Map

## Executive Summary

The Parks & Recreation Department is requesting Council authorization to proceed with the installation of tennis court lighting and trail improvements at Cosmo-Bethel Park. As identified in the FY-2015 CIP, staff is proposing to light the remaining four tennis courts and make necessary trail improvements to reduce annual maintenance and improve ADA access to the fishing lake. The total project budget is \$150,000, with funding provided by the 2010 Park Sales Tax. The project will be bid through the City's Purchasing Department and will be completed using a combination of contract and force account labor. Installation of the tennis court lighting and trail improvements are scheduled to begin this fall with an anticipated completion date of summer 2015.

## Discussion

The 40-acre Cosmo-Bethel Park, located at 4500 Bethel Street, offers a wide variety of park amenities to multiple user groups and is identified in the *2013 Parks, Recreation and Open Space Master Plan* as a community park. Park features include 3 shelters, 12 tennis courts, open playfield, baseball field, playground and 0.46 mile gravel walking trail. The park property was purchased in 1971 and initial park development was completed in 1979. The park has undergone additional improvements and renovations since the initial opening, including a rededication of the park in 2008.

The improvements to the park in 2007 were funded by the 2005 Park Sales Tax and included the resurfacing of the existing 8 tennis courts and the construction of 4 new tennis courts. This project did not include lighting of the 4 new tennis courts with the decision that those would be funded at a later date using an alternate funding source. Park staff identified the lighting of the final 4 tennis courts at Cosmo-Bethel Park as one of the projects to be completed with funding provided by the 2010 Park Sales Tax. The tennis court lighting project was allocated \$150,000 in Park Sales Tax funding and is based on 2009 cost projections for court lighting.

The tennis courts at Cosmo-Bethel Park are used by multiple user groups including open play by citizens, private tournaments, the Rock Bridge Bruins tennis teams and as a host site for the Show-Me State Games. The courts also served as the official practice site for the 14 teams participating in the 2014 Women's SEC Tennis Championships. The lighting of the 4 tennis courts

# City of Columbia

701 East Broadway, Columbia, Missouri 65201



will allow for extended hours of play and increase court availability for user groups.

Staff is proposing to use MUSCO green lighting for the 4 court lighting installation. The technology associated with MUSCO lighting systems provides multiple benefits over other lighting competitors. The light spill from each lighting fixture is reduced by 50% through photometric improvements to the luminaires. The reduction in light spill assists with the overall elimination of light pollution from the athletic field complex. These lights will have the option of being controlled at the tennis courts, by computer, or by a smart phone. The MUSCO system will also provide the Parks and Recreation Department with a "Constant 25" guarantee. The warranty program provides product assurance and warranty for 25 years. The overall cost savings from modern lighting technology through MUSCO has shown to reduce utility costs by 50% or more over older lighting systems. The existing lights on the other 8 tennis courts are also MUSCO products.

Along with the installation of the tennis court lighting, park staff is proposing to make improvements to the 0.46 mile gravel walking trail around Cosmo-Bethel Lake. Staff is proposing to convert a large portion of the gravel trail to a 6-foot wide concrete trail. The gravel trail was originally constructed as an Eagle Scout project and is subject to extensive washouts during rain events due to the natural terrain of the park property and proximity to the lake. Converting a portion of the trail to concrete will reduce the annual maintenance needed for trail repairs and reduce labor and material costs for the park property. The partial conversion of the trail to concrete will also allow park staff to improve ADA accessibility to the fishing lake by improving the trail surface and adding multiple ADA bulbouts along the fishing lake. Similar bulbouts have been constructed at Stephens Lake Park and Nifong Park and has improved fishing access for citizens utilizing the lake at each park. The improvements at the lake trail will also include a new walking bridge on the east side of the lake. The tennis court light installation and concrete work for the trail will be accomplished by contract labor. Park staff will do the finish landscape work, such as seeding/strawing around the disturbed areas of the trail.

The proposed improvements to Cosmo-Bethel Park were presented to the public at an interested parties meeting on September 18, 2014 at the Activity and Recreation Center. Park staff met with 3 members of the community and gathered feedback regarding the project. Park staff also presented the proposed plans to the Parks and Recreation Commission on September 18, 2014. The P&R Commission reviewed and approved the plans without discussion.

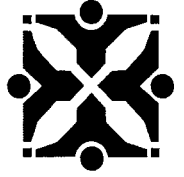
The park improvements at Cosmo-Bethel Park are included in the City's FY15 Capital Improvement Program budget, with site construction scheduled to begin this fall 2014. Staff anticipates that the improvements will be completed by summer 2015. All work and materials will be bid through the City's Purchasing Department and will be completed using a combination of contract and force account labor.

<b>Fiscal Impact</b>
----------------------

Short-Term Impact: The total project budget is \$150,000 and is funded by the 2010 Park Sales Tax. Based on estimated use, park staff anticipates that the annual utility bills will increase by approximately \$2,000. These utility expenses may be partially offset by additional revenue from groups renting the tennis courts.

# City of Columbia

701 East Broadway, Columbia, Missouri 65201



## Vision, Strategic & Comprehensive Plan Impact

Vision Impact: Parks, Recreation and Greenways

Strategic Plan Impact: Health, Safety and Wellbeing

Comprehensive Plan Impact: Livable & Sustainable Communities

## Suggested Council Action

Approve the Council legislation setting a public hearing for the proposed project. Following the public hearing, approve the ordinance authorizing the project to proceed.

## Legislative History

Ordinance #19850, passed March 17, 2008 authorizing the construction of four new tennis courts at Cosmo-Bethel Park

<http://www.gocolumbiamo.com/CMS/codemaster/attachment.php?ordid=17309>

  
Department Approved

  
City Manager Approved

Introduced by \_\_\_\_\_

First Reading \_\_\_\_\_

Second Reading \_\_\_\_\_

Ordinance No. \_\_\_\_\_

Council Bill No. B 317-14

**AN ORDINANCE**

determining it is in the public interest to construct improvements at Cosmo-Bethel Park to include the installation of tennis court lighting and construction of a new walking bridge, 6-foot wide concrete walking trail and multiple bulbouts along a portion of the fishing lake; approving and adopting plans and specifications; determining that a portion of the work shall be done by contract; calling for bids through the Purchasing Division; determining that a portion of the project shall be done by city employees; providing for payment for the improvement; authorizing the City Manager to obtain, execute and record all documents necessary for the improvement; providing for compliance with the prevailing wage law and state-mandated construction safety training; and fixing the time when this ordinance shall become effective.

WHEREAS, the City Council adopted a resolution declaring the necessity of constructing improvements at Cosmo-Bethel Park to include the installation of tennis court lighting and construction of a new walking bridge, 6-foot wide concrete walking trail and multiple bulbouts along a portion of the fishing lake; and

WHEREAS, the notice of a public hearing on this project was published in a daily newspaper of general circulation in the city; and

WHEREAS, the City Council has held a public hearing on construction of the improvement.

NOW, THEREFORE, BE IT ORDAINED BY THE COUNCIL OF THE CITY OF COLUMBIA, MISSOURI, AS FOLLOWS:

SECTION 1. The Council finds that the construction of improvements at Cosmo-Bethel Park to include the installation of tennis court lighting and construction of a new walking bridge, 6-foot wide concrete walking trail and multiple bulbouts along a portion of the fishing lake in the City of Columbia, Missouri, is necessary for the welfare and improvement of the city and that it is in the public interest that such improvements be made.

SECTION 2. The plans and specifications for this improvement, as prepared by the Director of Parks and Recreation, are hereby approved and made a part of this ordinance by reference.

SECTION 3. A portion of the construction of the improvement shall be done by contract in accordance with the plans and specifications, the laws of the State of Missouri, and the Charter and Ordinances of the City of Columbia, Missouri.

SECTION 4. The Purchasing Agent is hereby authorized to call for bids and execute a contract for the installation of the tennis court lighting and concrete work associated with construction of the walking bridge and trail improvements. As deemed advisable by the City Manager, city employees shall be used for the final landscaping.

SECTION 5. Payment for this improvement shall be made from Park Sales Tax Funds and such other funds as may be lawfully appropriated.

SECTION 6. The City Manager is authorized to obtain, execute and have recorded all licenses, easements, deeds and any other conveyances or instruments necessary for the City to complete this improvement.

SECTION 7. The contract for the improvement shall provide that not less than the prevailing hourly rate of wages, as found by the Department of Labor and Industrial Relations of Missouri, shall be paid to all workers performing work under the contract. The contractor's bond shall guarantee the faithful performance of the prevailing hourly wage clause in the contract.

SECTION 8. The bid specifications and contract for the improvement shall provide that the contractor and any subcontractor shall provide a ten-hour Occupational Safety and Health Administration construction safety program (or a similar program approved by the Missouri Department of Labor and Industrial Relations) for all employees working on-site. All employees working on the site of the improvement are required to complete the safety program within 60 days of beginning work on the improvement project.

SECTION 9. This ordinance shall be in full force and effect from and after its passage.

PASSED this \_\_\_\_\_ day of \_\_\_\_\_, 2014.

ATTEST:

\_\_\_\_\_  
City Clerk

\_\_\_\_\_  
Mayor and Presiding Officer

APPROVED AS TO FORM:

\_\_\_\_\_  
City Counselor

City of Columbia

701 East Broadway, Columbia, Missouri 65201



**SUPPORTING DOCUMENTS INCLUDED WITH  
THIS AGENDA ITEM ARE AS FOLLOWS:**

Map

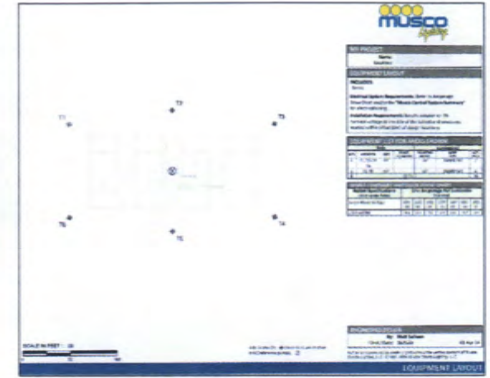


Cosmo Bethel Park

100 50 0 100 N 9/4/2014



Lighting Last Four Tennis Courts



Proposed Concrete Trail  
Six foot wide walk  
Note: Trail on Lake Dam is not subject to washing or erosion and will remain gravel



Existing Trail Conditions



# Cosmo-Bethel Tennis Court Lighting & Walk/Trail Improvements