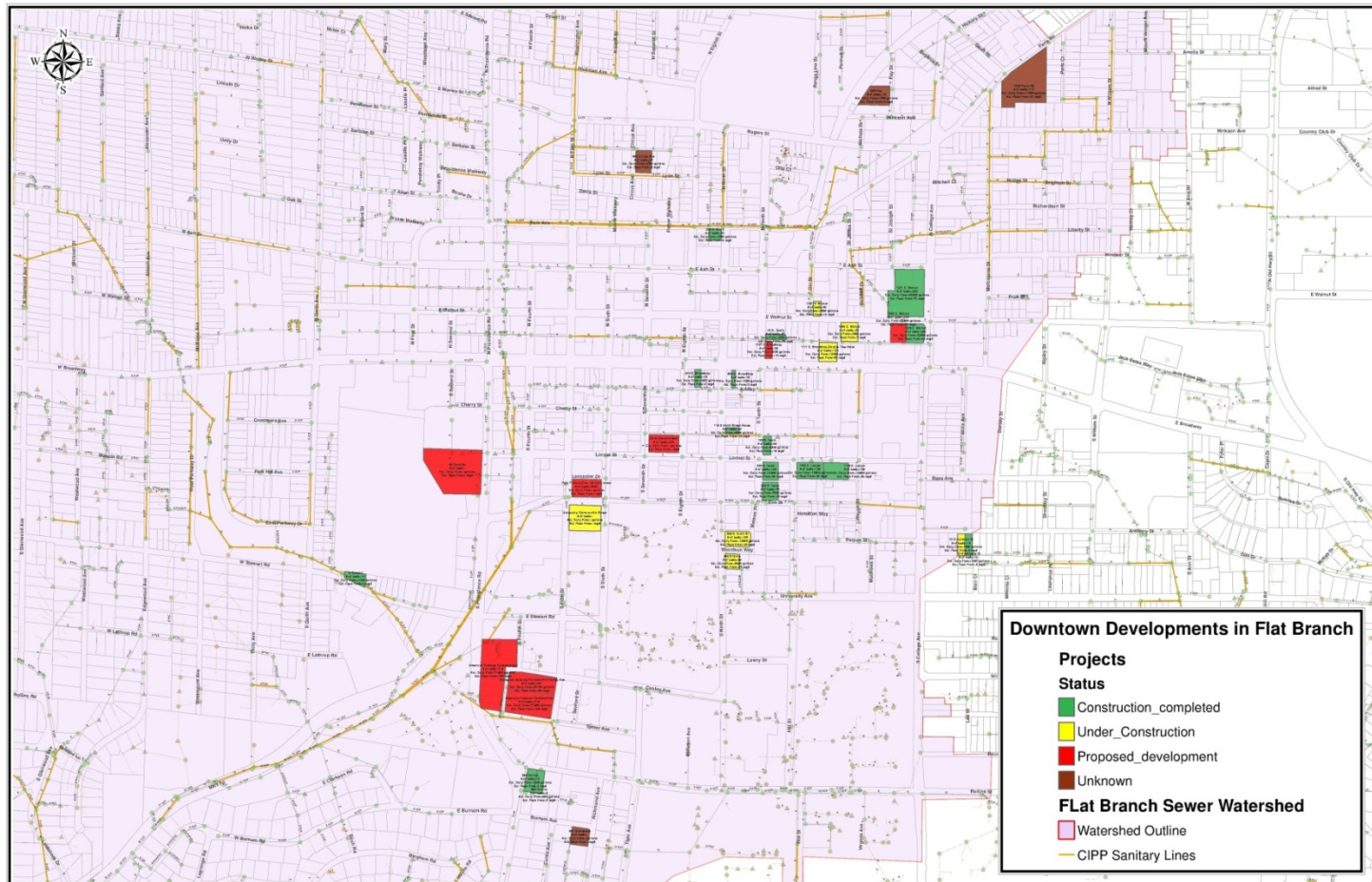


Presentation to the Downtown Leadership Council

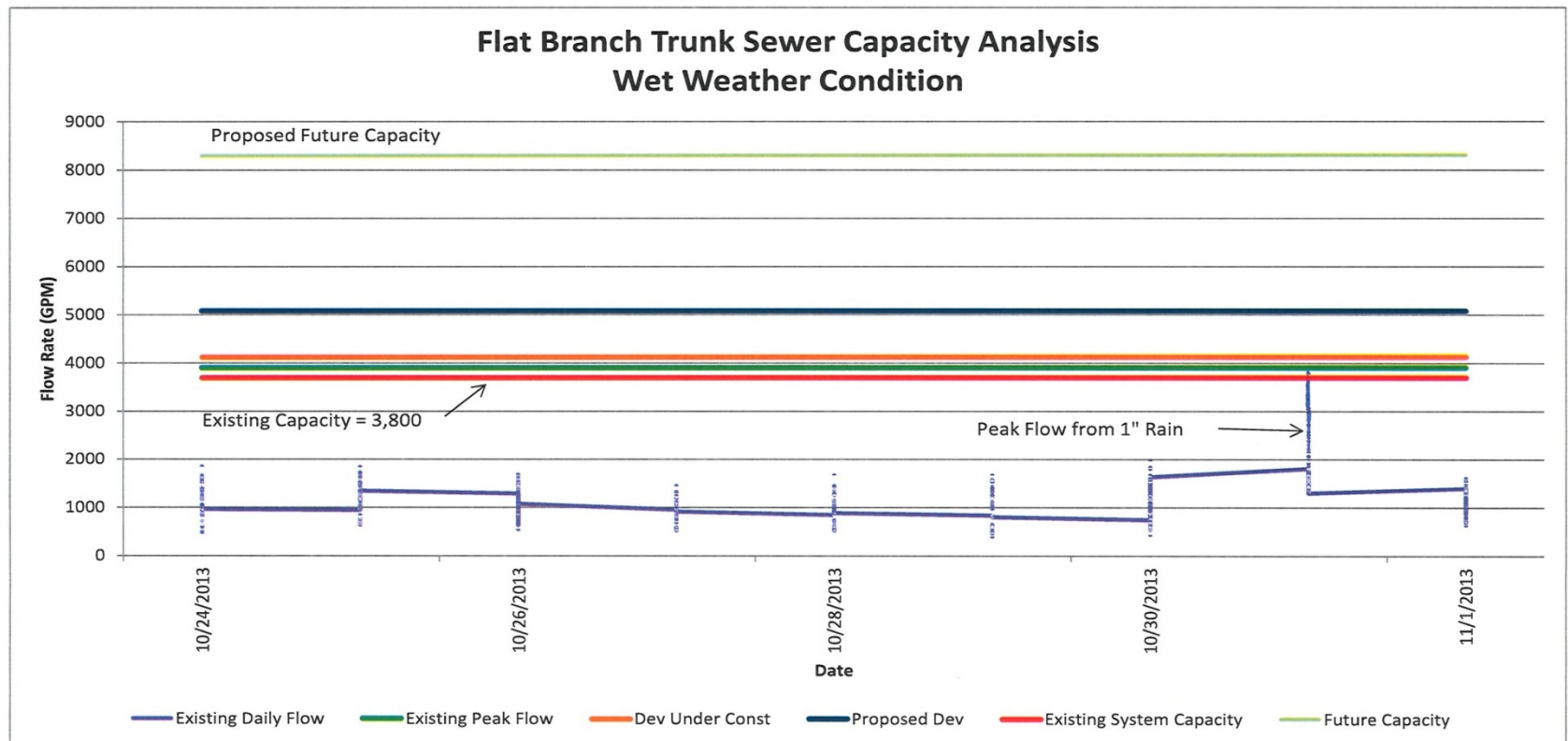
Issues with Infrastructure

- * Capacity for development
- * Capacity due to Condition(aging infrastructure)

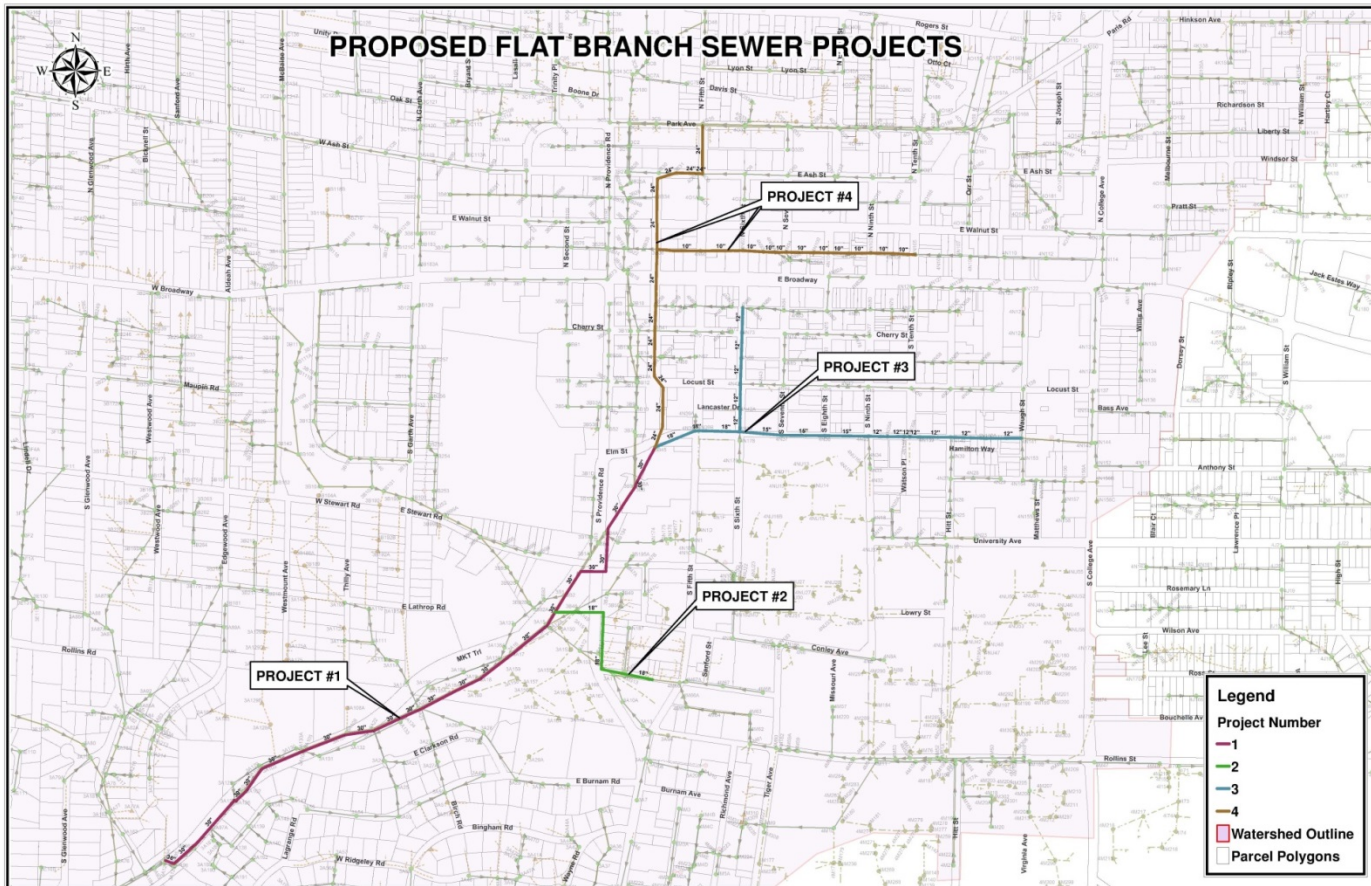
Development Projects



Sewer Capacity Analysis



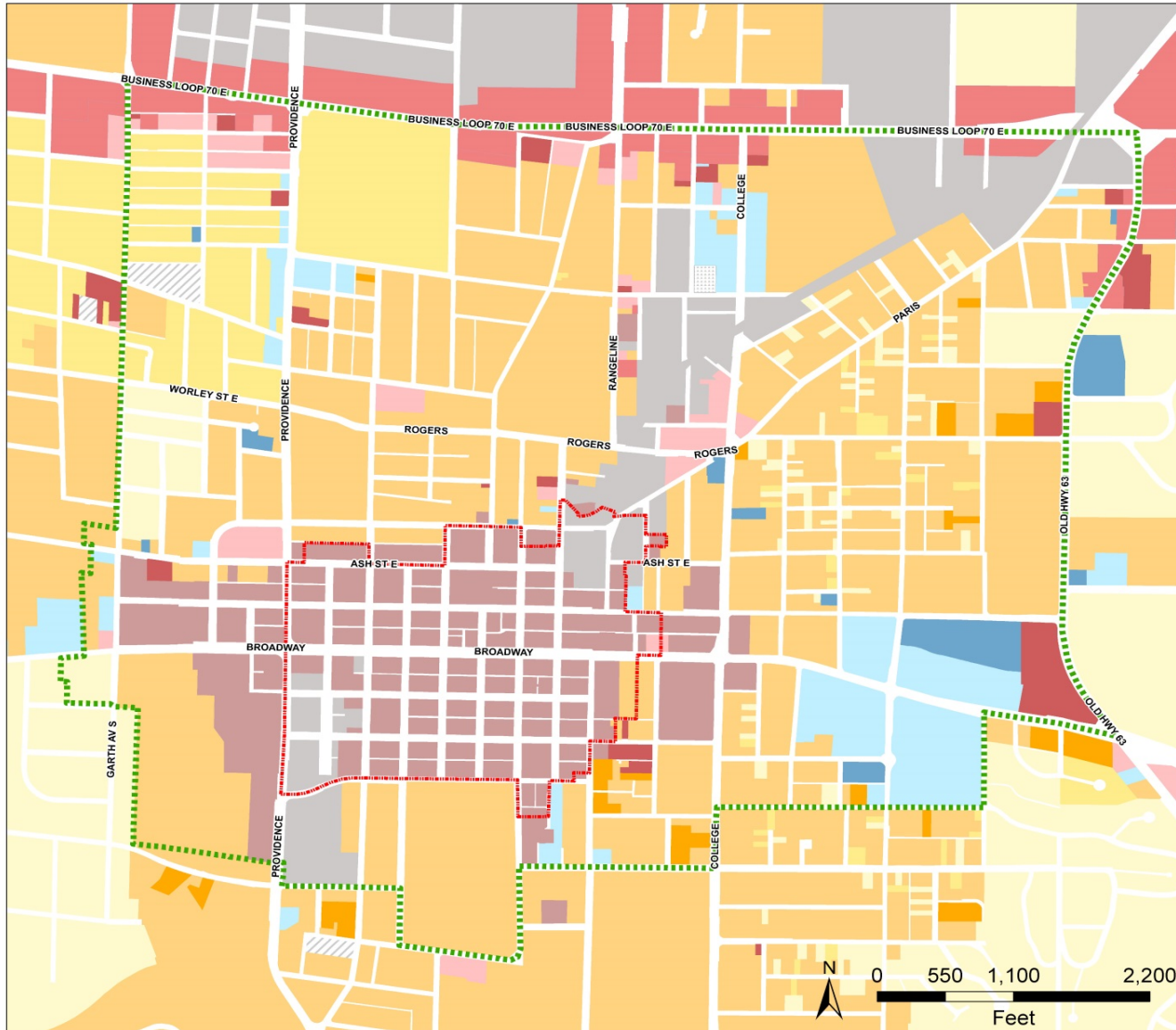
Proposed Projects



Downtown Leadership Council Study Area

Primary and Overlay Zoning Districts

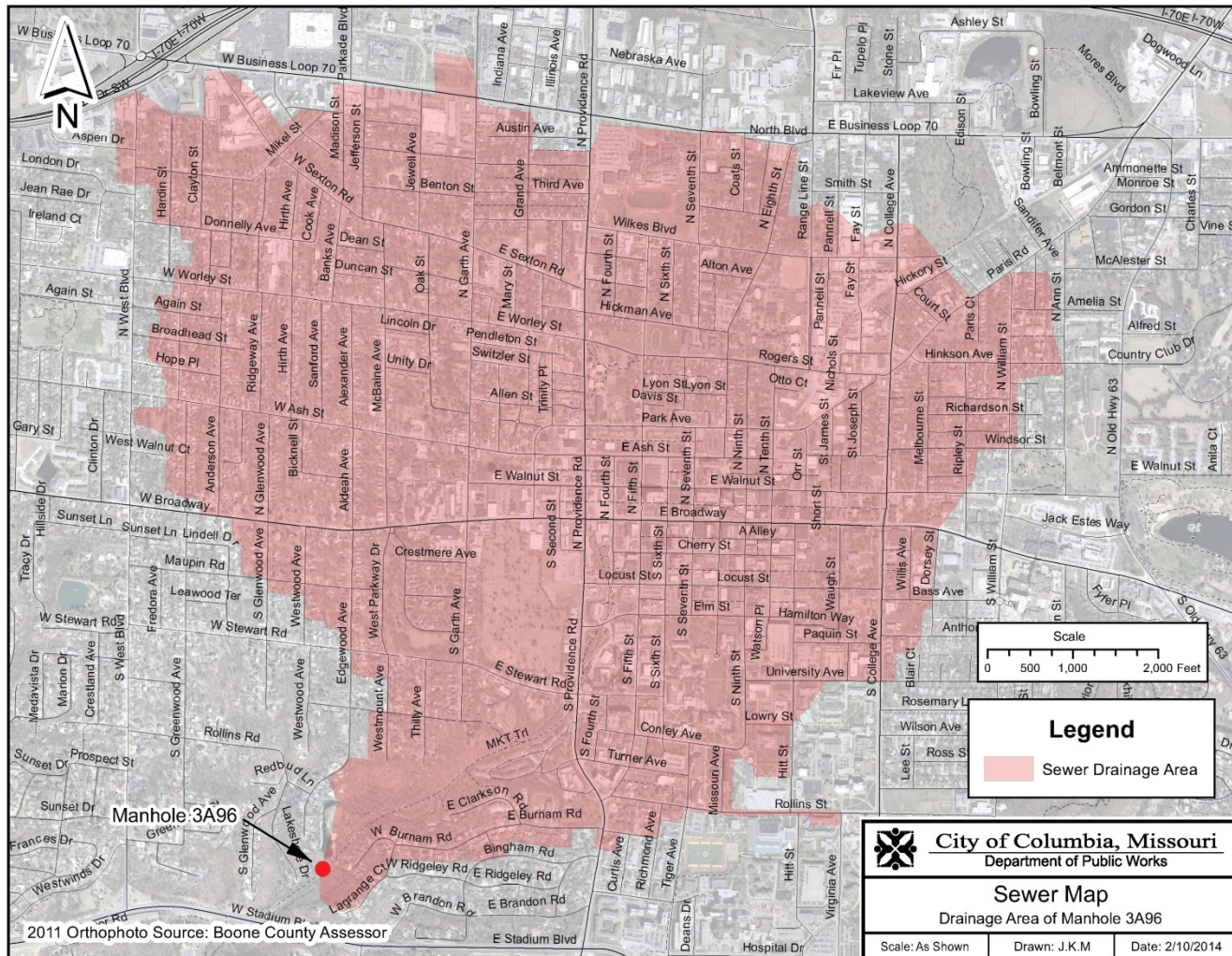
City of Columbia, Community Development Department, EDD 6/3/2013



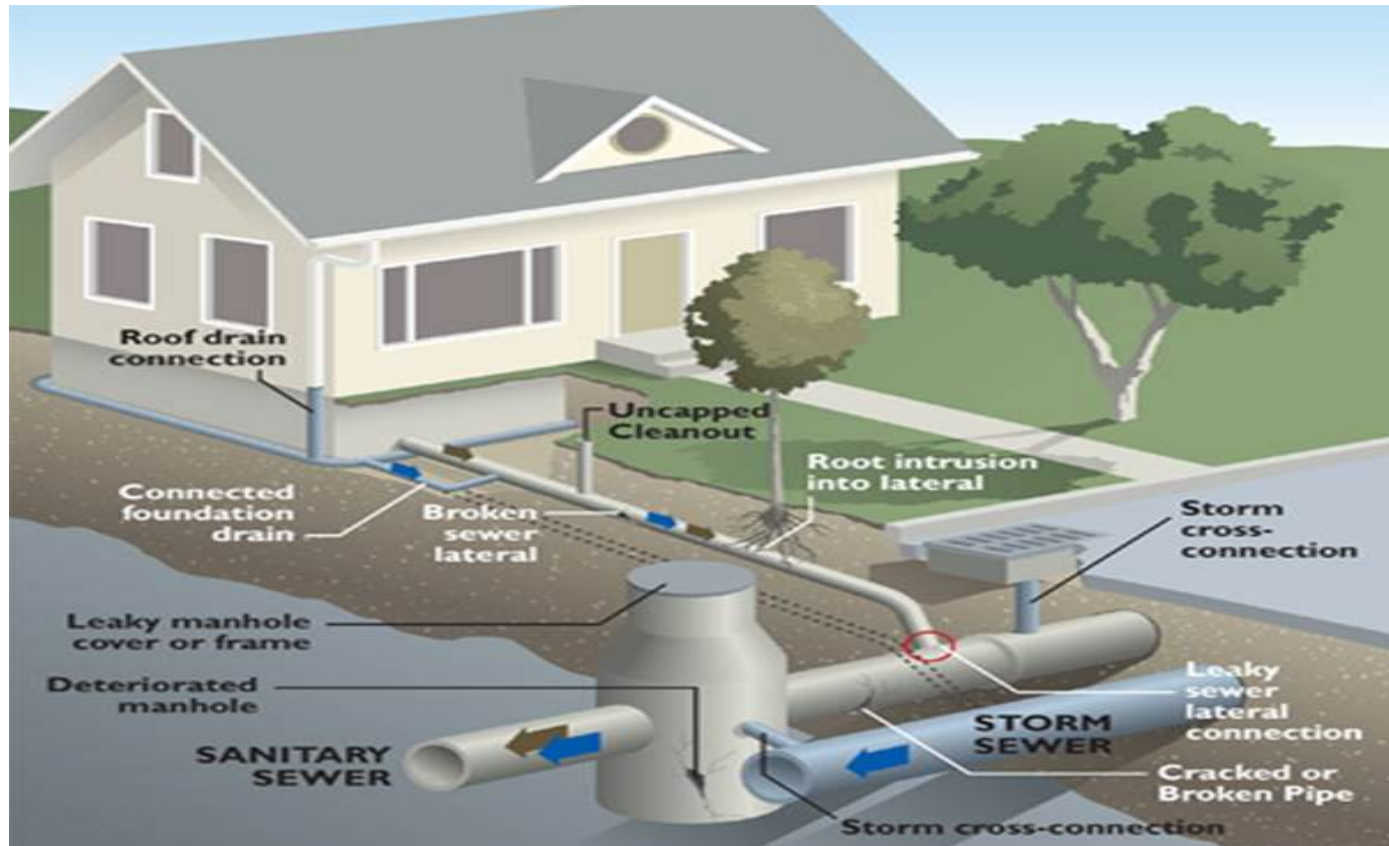
- CID Boundary
- DLC Downtown Study Area
- Zoning Districts**
- Agricultural
- Planned Unit Development
- One-Family Dwelling
- R-1 Planned Unit Development
- Two-Family Dwelling
- R-2 Planned Unit Development
- Medium Density Multi-Family
- R-3 Planned Unit Development
- High Density Multi-Family
- Residential Manufactured Home
- Office
- Special Office
- Planned Office
- Intermediate Business
- Central Business
- General Business
- Planned Business
- Research Development
- Controlled Industrial
- Underground Space
- General Industrial
- Planned General Industrial

Updated: 2/21/2014 -TAA

Drainage Area for Flatbranch that includes Downtown



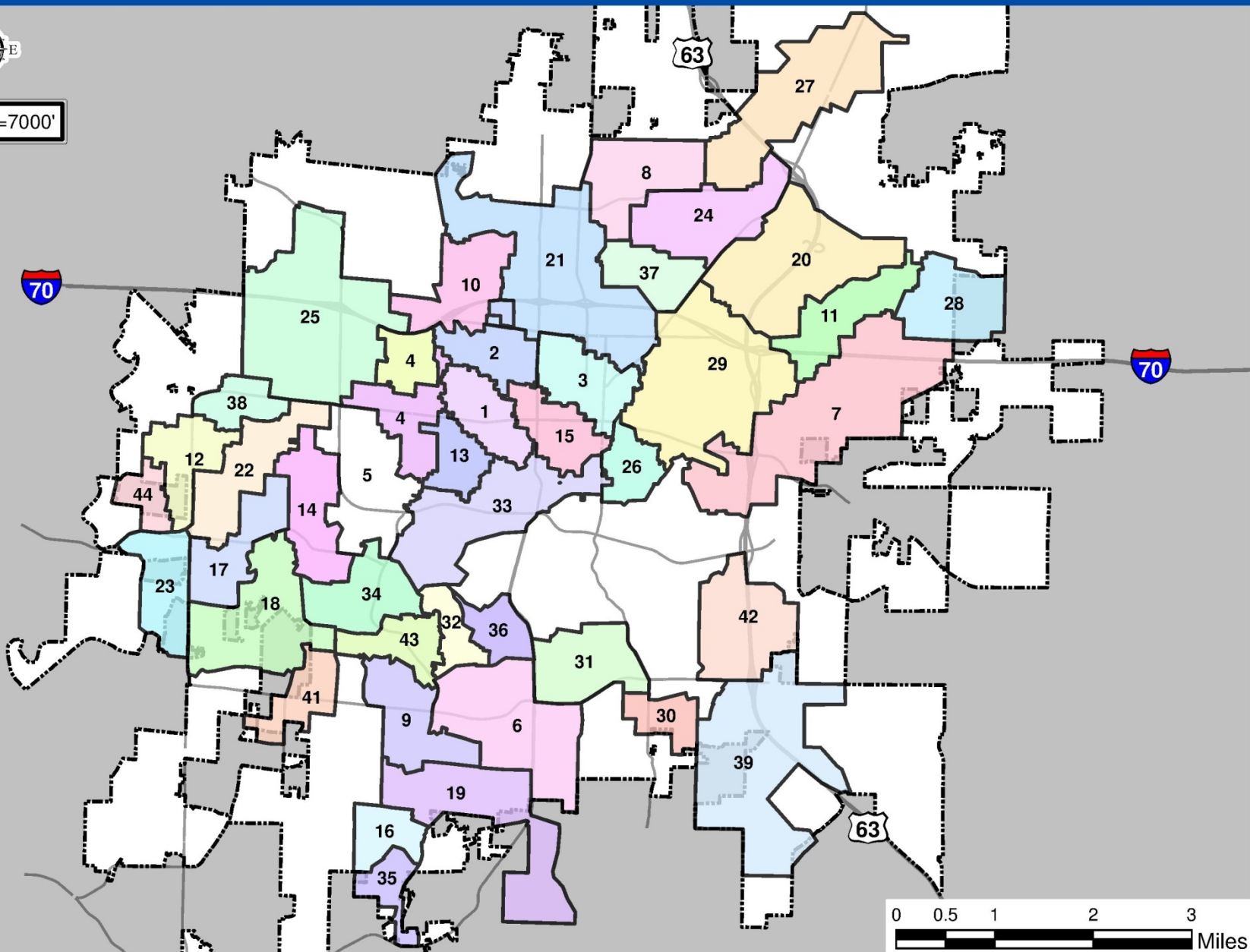
Sources of Inflow & Infiltration

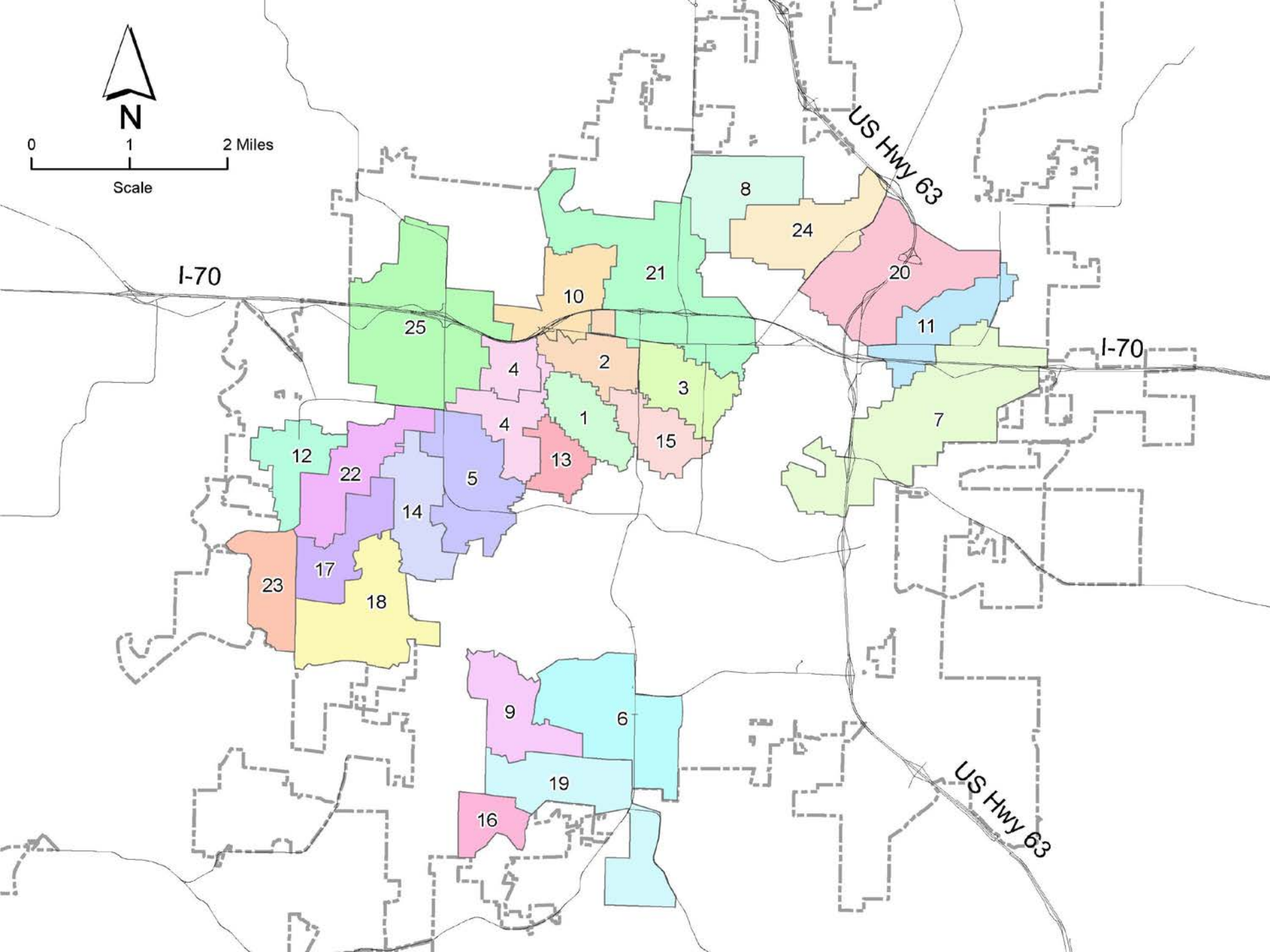
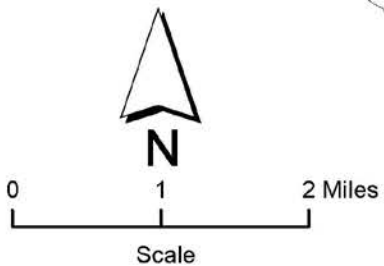


I&I REDUCTION BASINS

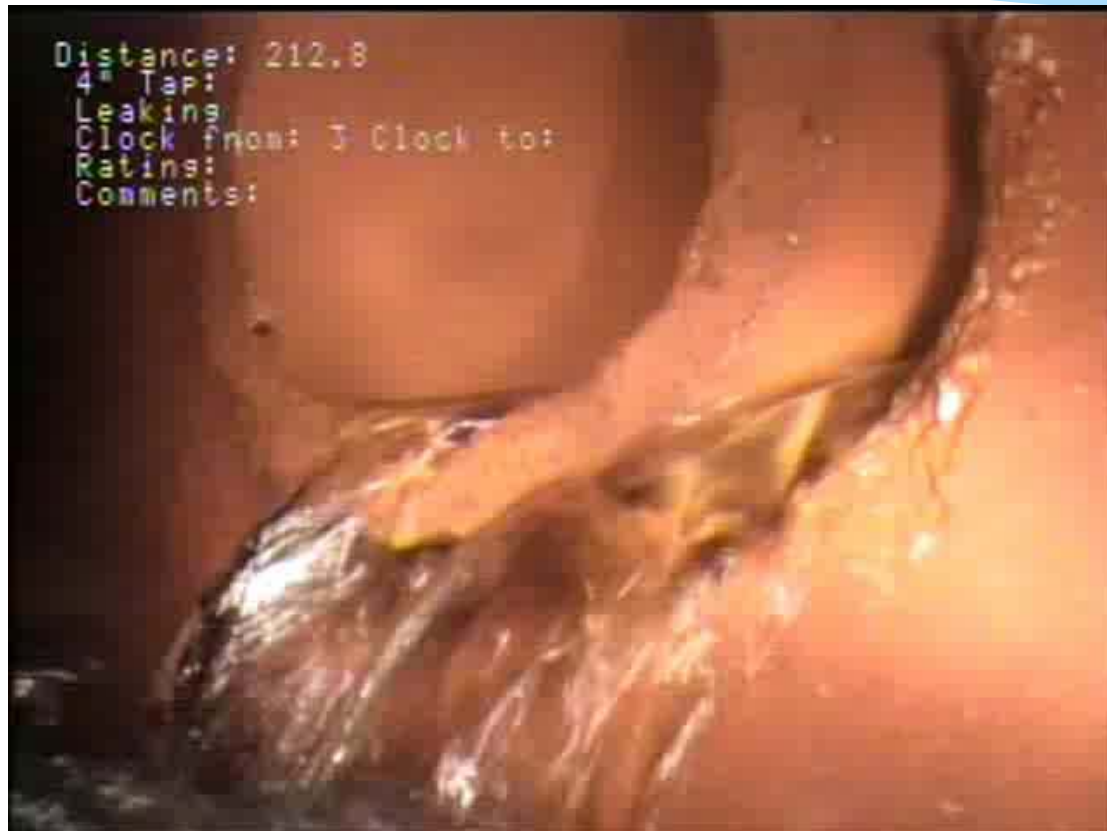


Scale: 1"=7000'





Sewer Tap







Consultant for Study



Flat Branch Flow Monitoring

City of Columbia, Missouri

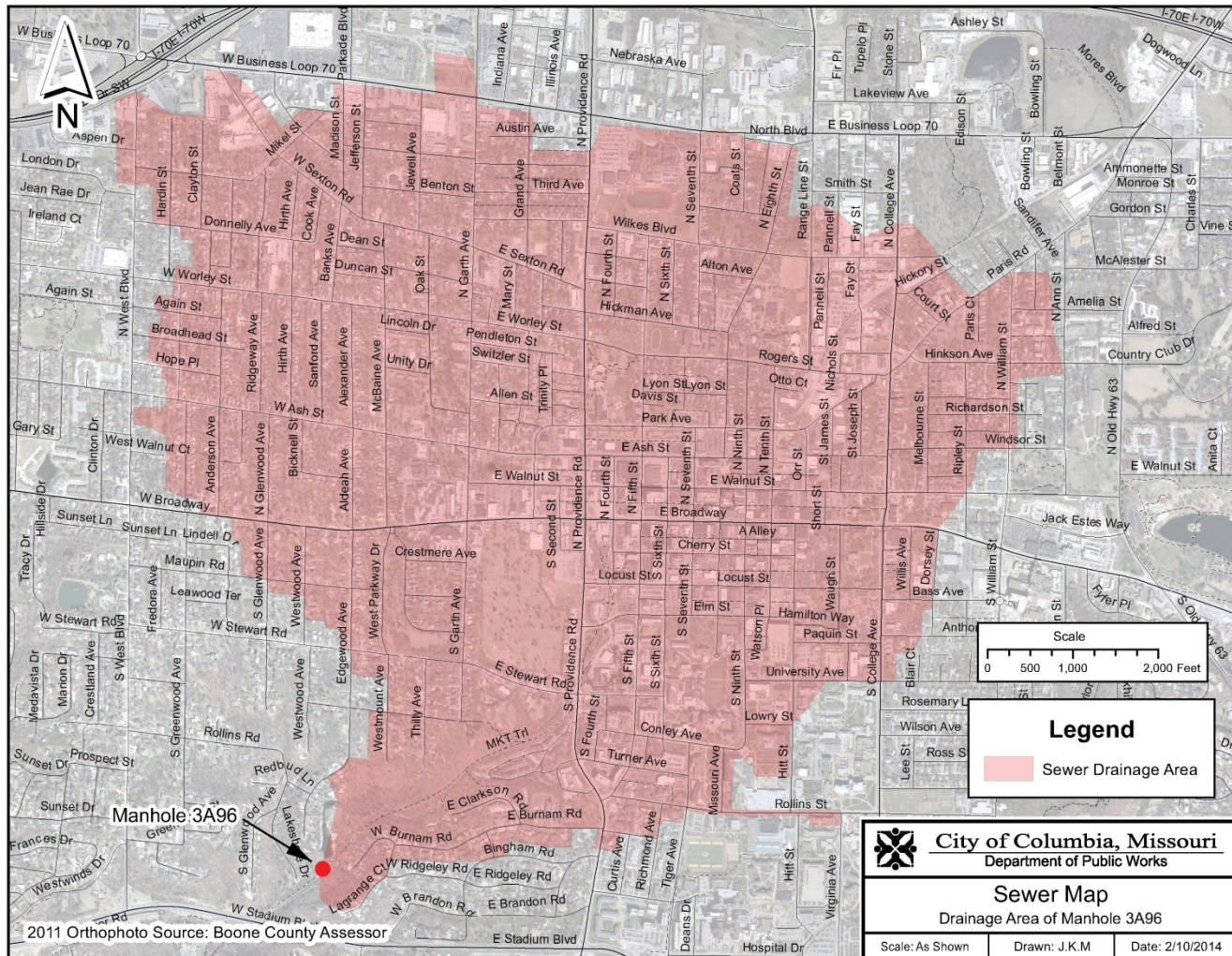
April 2-3, 2014 Rainfall Events

Site 3 – 3A132 (21")

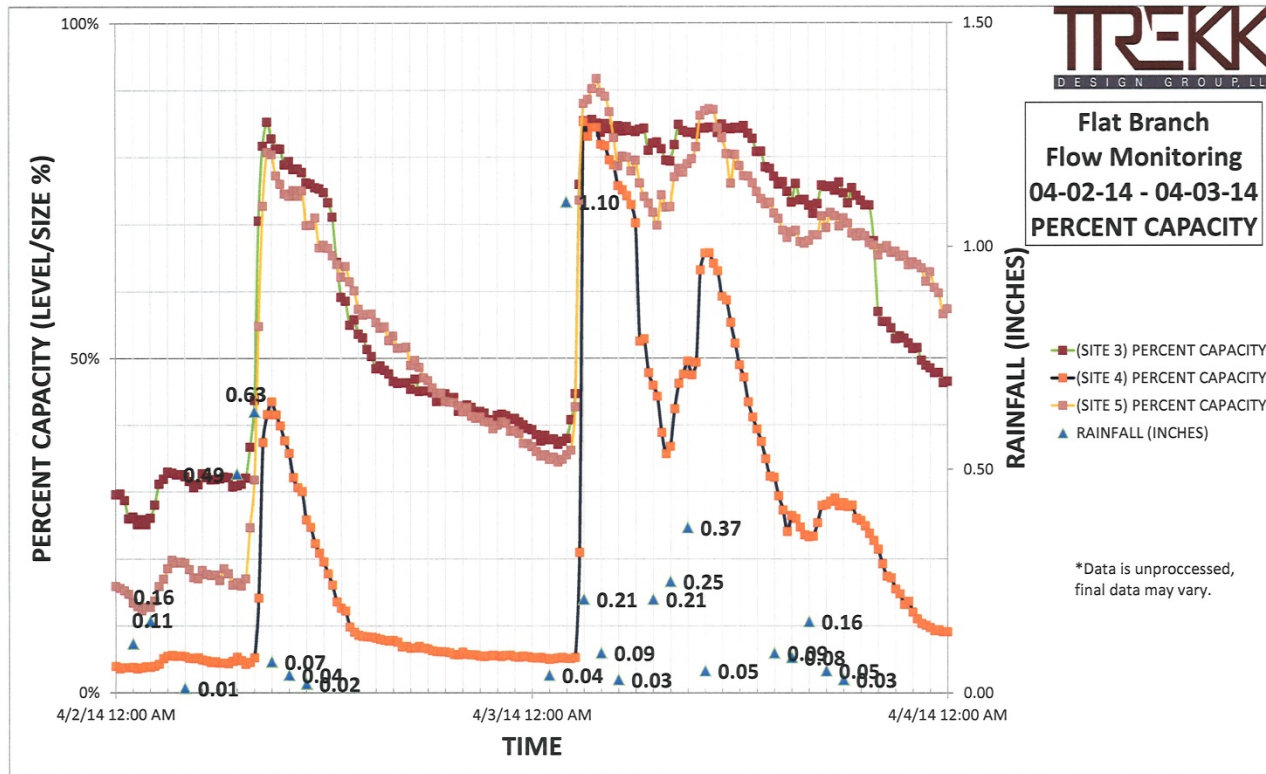
Site 4 – 3A106 (18")

Site 5 – 3A108 (15")

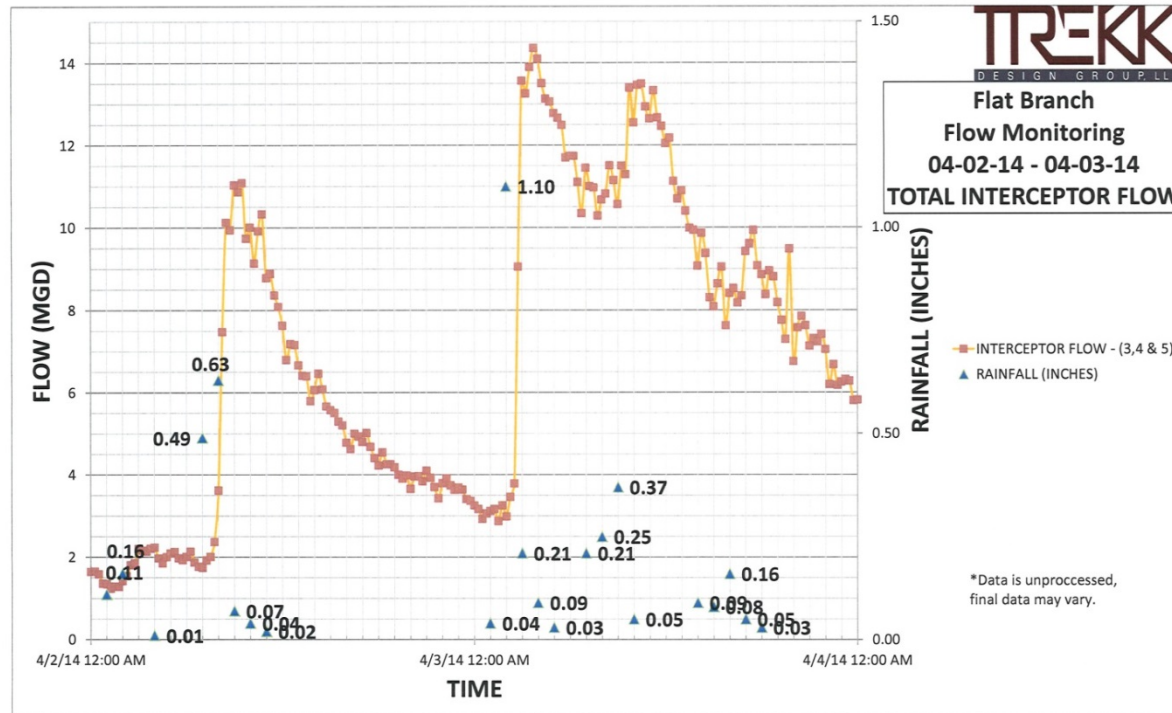
Drainage Area for Flatbranch that includes Downtown



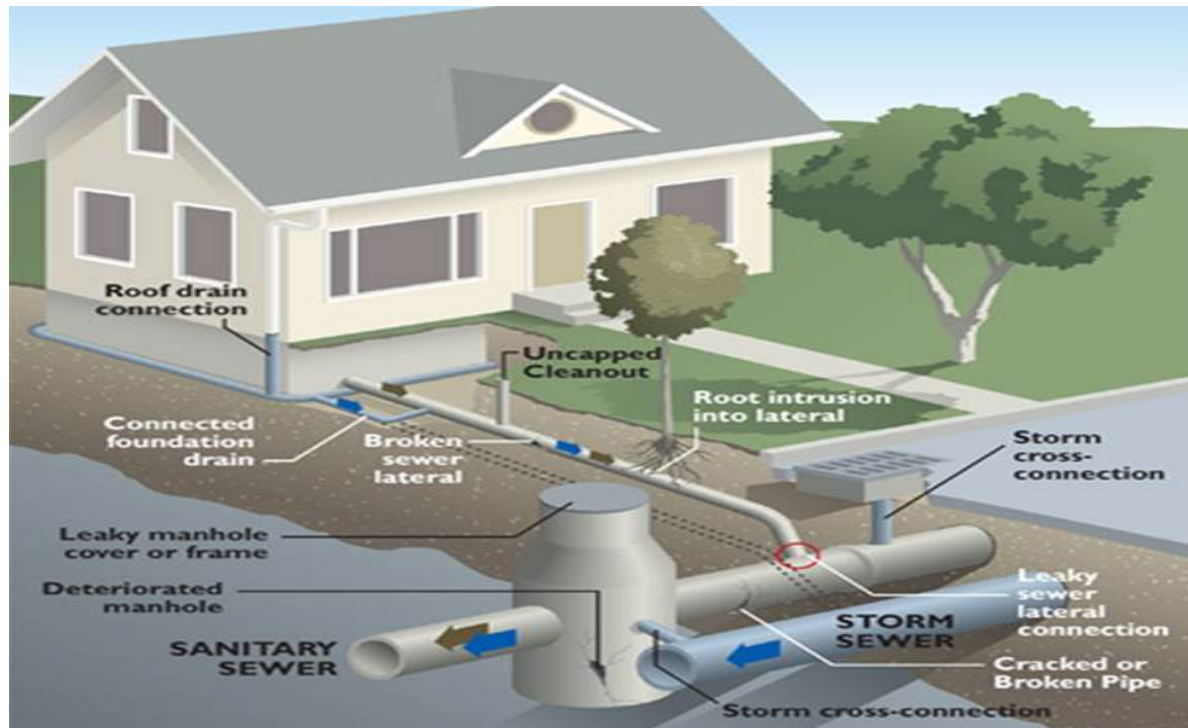
Percent Capacity of Sewer System during Wet Weather



Total Flow for Flatbranch that includes Downtown



Sources of Inflow & Infiltration



Stormwater Box Culvert



Stormwater Box Culvert



Garth Street near Sexton Road



Photo taken 13 years ago.

5.3 FT.

10:30 PM
04/30/20



Existing Condition

- * We have newer technology that we camera our stormwater and sewer system but not all the system has been completed
- * We are finding infrastructure we did not know existed (PCC we thought were abandoned, water lines, stormwater)
- * Different types of pipe(brick, stone, wood, clay, PVC, Orangeburg)
- * Newest sewer main was built in 1950's that serves Flatbranch

Staff Questions for the DLC

- * What type of growth should staff plan for Downtown?
- * How much of each?
 - * Residential
 - * Office
 - * Retail
 - * Industrial