

Source: Public Works

John

Agenda Item No: REP 1-14

To: City Council
From: City Manager and Staff

MM

Council Meeting Date: Jan 6, 2014

Re: Traffic Calming Year End Report for 2013

EXECUTIVE SUMMARY:

Staff has prepared for Council consideration a Neighborhood Traffic Management Program year end report for 2013. This report includes traffic calming projects and ranks each project from highest score to lowest.

DISCUSSION:

The Neighborhood Traffic Management Program (NTMP) was implemented in November of 2013, and establishes Level 1, Level 2 and Level 3 categories of traffic calming projects. Level 1 projects can be handled administratively by staff, and include items such as signing and marking. Level 2 and Level 3 generally include projects that have a greater impact on the neighborhood and require more expensive calming devices such as speed humps, medians or other devices.

The new NTMP is better suited to streamline and prioritize new calming projects. The scoring system allows staff to concentrate efforts on a data driven basis, ensuring that locations needing attention receive it in a fair and equitable manner. As part of the program, the Public Works department is to provide a year end report listing the existing projects and related scoring of each project. Attached to this report are the Neighborhood Traffic Management score sheets, and proposed locations of speed hump placement along Royal Heritage and Muirfield.

Traffic calming resources were redirected from 2010 to 2012 in order to focus on neighborhood speed limit sign installation changes. Once that was complete, Public Works started the process of working on assessing Derby Ridge, College Park, Muirfield, Royal Heritage and High Ridge for traffic calming projects based on an existing traffic calming policy, and direction from Council at the November 19, 2012 Council meeting.

Once the Heritage Meadows Neighborhood Association was provided information regarding a plan for potential speed hump locations (attached), the process of establishing the new Neighborhood Traffic Management Program was undertaken. Public Works is currently awaiting neighborhood feedback regarding the proposed speed humps. For that reason, even though the streets are not the highest scoring on the list, Public Works suggests that Royal Heritage and Muirfield still be funded if the neighborhood is in support of the plan, at a cost of approximately \$12,000. The installations would be beneficial in the long run due to the speeds on the street and cut-through traffic volumes.

For 2014, Public Works will use the attached score sheets to prioritize efforts throughout the year. There will be instances when there is a time lag in moving a project forward while we await neighborhood meetings, responses, and data, but generally staff intends to focus attention on projects that score the highest on the list.

Prior to Level 2 or Level 3 projects being implemented, staff will present to Council information concerning transferring funds to the project from the Traffic Safety account, or from other sources. Future year end reports will include a summary of projects completed.

FISCAL IMPACT:

None with this report.

VISION IMPACT:

<http://www.gocolumbiamo.com/Council/Meetings/visionimpact.php>

Strengthen enforcement of ordinances that contribute to environmental soundness and sustainability, and those that safeguard neighborhoods against physical decay.

Columbia will have diverse travel options that allow for safe and efficient travel to and through destination points. Travel options will be compatible with adjacent land uses and coordinated with the transportation timing needs of the community.

SUGGESTED COUNCIL ACTIONS:

Direct staff to finish the Level 2 implementation in Heritage Meadows, and focus Level 2 or 3 efforts in 2014 on Derby Ridge Drive as it has the highest score.

FISCAL and VISION NOTES:					
City Fiscal Impact Enter all that apply		Program Impact		Mandates	
City's current net FY cost	\$0.00	New Program/ Agency?	Yes	Federal or State mandated?	No
Amount of funds already appropriated	\$0.00	Duplicates/Expands an existing program?	No	Vision Implementation impact	
Amount of budget amendment needed	\$0.00	Fiscal Impact on any local political subdivision?	No	Enter all that apply: Refer to Web site	
Estimated 2 year net costs:		Resources Required		Vision Impact?	Yes
One Time	\$0.00	Requires add'l FTE Personnel?	Yes	Primary Vision, Strategy and/or Goal Item #	5.3
Operating/ Ongoing	\$0.00	Requires add'l facilities?	No	Secondary Vision, Strategy and/or Goal Item #	5.3.2, 13.2
		Requires add'l capital equipment?	No	Fiscal year implementation Task #	

Neighborhood Traffic Management Program 2013 Year End Report

Neighborhood	Total Score	Volume Score	Speed Score	Ped Score	School Score	Bike Score	Accident Score	Ward	Request Year	Status
Derby Ridge	88.0	20	44.0	0	10	5	9	2	2009	Study Started
College Park	87.0	10	45	10	10	5	7	4	2006	Study Started
William St.	79.9	19	35.9	10	5	0	10	6	2013	Waiting for Petition Letter/Study Started
Hanover	76.8	18	40.8	5	0	5	8	3	2006	Study Started
Sexton	73.5	19	29.5	5	10	0	10	1	2012	Study Started
Rice	70.8	15	44.8	0	0	5	6	3	2007	Study Started
Parkside	65.0	6	45	5	0	5	4	2	2012	Need to Study
Martinshire	63.0	5	45	10	0	0	3	4	2007	Waiting for Petition Letter
Audubon	62.3	11	33.3	5	10	0	3	6	2013	Study Started
Stewart	58.6	20	18.6	0	5	5	10	4	2013	Received Petition. Used 2011 data
Kelsey	54.0	4	45	0	0	5	0	3	2007	Study Started
Ridgefield	52.8	5	37.8	5	5	0	0	4	2006	Waiting for Petition Letter
Grand	52.2	13	9.2	10	10	0	10	1	2006	Waiting for Petition Letter
Ridgemont	51.9	5	40.9	5	0	0	1	4	2006	Waiting for Petition Letter
Austin	51.1	6	18.1	10	10	0	7	1		Study Started
4th Avenue	48.6	4	27.6	5	10	0	2	1	2006	Started
Royal Heritage	48.5	8	40.5	0	0	0	0	5	2008	Study Started
North Brookline	48.0	3	35.0	5	5	0	0	5	2013	Waiting for Petition Letter
Crabapple	46.6	8	38.6	0	0	0	0	5	2013	Study Started
Kennesaw Ridge	45.0	3	30.0	0	10	0	2	2	2007	Study Started
Saddlebrook	44.0	3	30.0	0	10	0	1	2	2009	Study Started
Muirfield	43.8	4	34.8	0	0	5	0	5	2008	Study Started

Neighborhood Traffic Management Program 2013 Year End Report

Neighborhood	Total Score	Volume Score	Speed Score	Ped Score	School Score	Bike Score	Accident Score	Ward	Request Year	Status
Highridge	43.3	8	29.3	5	0	0	1	4	2006	Study Started
Braemore	40.3	1	28.3	5	5	0	1	4	2009	Waiting for Petition Letter
Brookfield Manor	39.5	2	37.5	0	0	0	0	5	2008	Study Started
Godfrey	38.8	4	29.8	0	5	0	0	5	2006	Waiting for Petition Letter
War Admiral	35.2	4	20.2	0	10	0	1	2	2007	Study Started
Barksdale Mill	33.9	3	30.9	0	0	0	0	5	2013	Waiting for Petition Letter
Sanford	33.3	2	26.3	0	5	0	0	1	2008	Need to Study
Glencairn	32.5	6	26.5	0	0	0	0	5	2008	Waiting for Petition Letter
Greenbriar	31.8	3	18.8	5	0	5	0	5	2013	Waiting for Petition Letter
Glenwood	31.5	2	19.5	5	5	0	0	1	2008	Need to Study
Brookfield	29.0	5	24.0	0	0	0	0	5	2008	Study Started
Prestwick Dr.	28.3	5	23.3	0	0	0	0	5	2008	Study Started
Anderson	26.0	3	15.0	0	5	0	3	1	2008	Need to Study
Falmouth	19.9	1	13.9	0	5	0	0	5	2013	Waiting for Petition Letter

* The scoring system is as follows:

20 points allotted for traffic volume.

45 points allotted for 85th percentile speed.

10 points maximum allotted for proximity to pedestrian generators including Parks, Bus Stops, Hospitals, Colleges, Trails, and C2 zoning district.

10 points maximum allotted proximity to schools 5 points if a school is within 1/2 mile and an additional 5 points if a school is within 1/4 mile.

5 points if a street is on a bike route.

10 points for collision history on a street.

Points total to 100.

Neighborhood Traffic Management Program 2013 Year End Report

No Speed Data Available										
Neighborhood	Total Score	Volume Score	Speed Score	Ped Score	School Score	Bike Score	Accident Score	Ward	Request Year	Status
3rd Avenue	0	0	0	0	0	0	0	1	2006	Waiting for Petition Letter
Cook	0	0	0	0	0	0	0	1	2012	Started
Longview	0	0	0	0	0	0	0	4	2007	Waiting for Petition Letter
Ridgeway	0	0	0	0	0	0	0	1	2008	Need to Study
Aldeah	0	0	0	0	0	0	0	1	2008	Need to Study
Blue Ridge	0	0	0	0	0	0	0	2	2012	Need to Study
Bourn (S Rollins)	0	0	0	0	0	0	0	4	2012	Waiting for Petition Letter
Fall River Drive	0	0	0	0	0	0	0	5	2009	Waiting for Petition Letter
Hardin	0	0	0	0	0	0	0	1	2008	Need to Study
Heriford	0	0	0	0	0	0	0	2	2012	Waiting for Petition Letter
McBaine	0	0	0	0	0	0	0	1	2008	Need to Study
Middlebush	0	0	0	0	0	0	0	4	2006	Waiting for Petition Letter
N. Greenwood	0	0	0	0	0	0	0	1	2008	Need to Study
Northampton	0	0	0	0	0	0	0	6	2008	Study Started
Parkade	0	0	0	0	0	0	0	2	2012	Need to Study
Westwood	0	0	0	0	0	0	0	4	2007	Waiting for Petition Letter
Eastham	0	0	0	0	0	0	0	5	2013	Waiting for Petition Letter
Rollins Road	0	0	0	0	0	0	0	4	2013	Waiting for Petition Letter
Aztec	0	0	0	0	0	0	0	3	2013	Need to Study
Lynnwood	0	0	0	0	0	0	0	5	2013	Need to Study
Proctor Drive	0	0	0	0	0	0	0	2	2013	Need to Study
Hockaday Place	0	0	0	0	0	0	0	2	2013	Need to Study
Mountian/ Aspen Ridge	0	0	0	0	0	0	0	2	2013	Need to Study

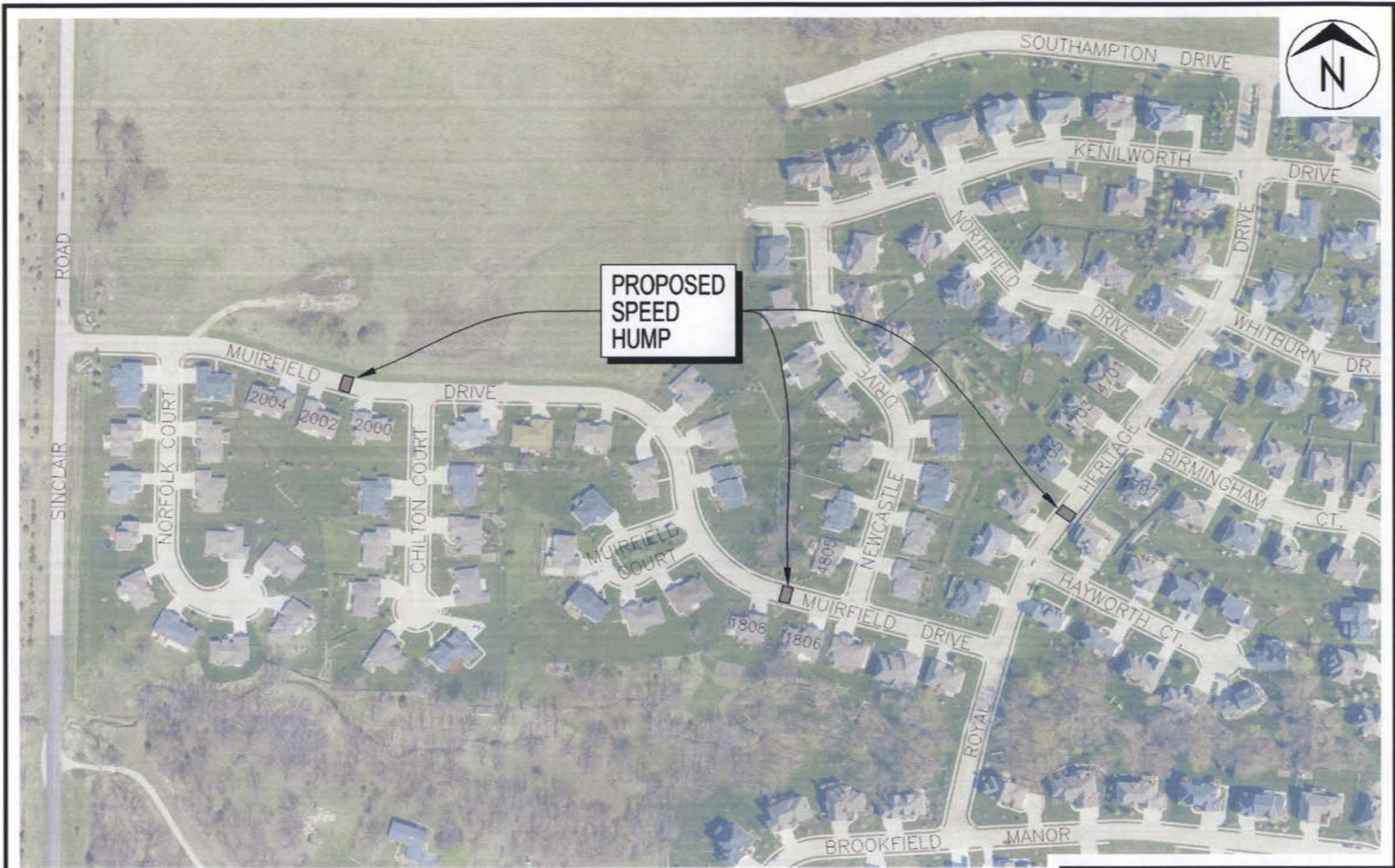
Neighborhood Traffic Management Program 2013 Year End Report

No Speed Data Available


Neighborhood	Total Score	Volume Score	Speed Score	Ped Score	School Score	Bike Score	Accident Score	Ward	Request Year	Status
3rd Avenue	0	0	0	0	0	0	0	1	2006	Waiting for Petition Letter
Cook	0	0	0	0	0	0	0	1	2012	Started
Longview	0	0	0	0	0	0	0	4	2007	Waiting for Petition Letter
Ridgeway	0	0	0	0	0	0	0	1	2008	Need to Study
Aldeah	0	0	0	0	0	0	0	1	2008	Need to Study
Blue Ridge	0	0	0	0	0	0	0	2	2012	Need to Study
Bourn (S Rollins)	0	0	0	0	0	0	0	4	2012	Waiting for Petition Letter
Fall River Drive	0	0	0	0	0	0	0	5	2009	Waiting for Petition Letter
Hardin	0	0	0	0	0	0	0	1	2008	Need to Study
Heriford	0	0	0	0	0	0	0	2	2012	Waiting for Petition Letter
McBaine	0	0	0	0	0	0	0	1	2008	Need to Study
Middlebush	0	0	0	0	0	0	0	4	2006	Waiting for Petition Letter
N. Greenwood	0	0	0	0	0	0	0	1	2008	Need to Study
Northampton	0	0	0	0	0	0	0	6	2008	Study Started
Parkade	0	0	0	0	0	0	0	2	2012	Need to Study
Westwood	0	0	0	0	0	0	0	4	2007	Waiting for Petition Letter
Eastham	0	0	0	0	0	0	0	5	2013	Waiting for Petition Letter
Rollins Road	0	0	0	0	0	0	0	4	2013	Waiting for Petition Letter
Aztec	0	0	0	0	0	0	0	3	2013	Need to Study
Lynnwood	0	0	0	0	0	0	0	5	2013	Need to Study
Proctor Drive	0	0	0	0	0	0	0	2	2013	Need to Study
Hockaday Place	0	0	0	0	0	0	0	2	2013	Need to Study
Copper Mountain/ Aspen Ridge	0	0	0	0	0	0	0	2	2013	Need to Study
East Parkway	0	0	0	0	0	0	0	4	2013	Need to Study

West Parkway	0	0	0	0	0			4	2013	Need to Study
Crestemere	0	0	0	0	0			4	2013	Need to Study

* The scoring system is as follows:
 20 points allotted for traffic volume.
 45 points allotted for 85th percentile speed.
 10 points maximum allotted for proximity to pedestrian generators including Parks, Bus Stops, Hospitals, Colleges, Trails, and C2 zoning district.
 10 points maximum allotted proximity to schools 5 points if a school is within 1/2 mile and an additional 5 points if a school is within 1/4 mile.
 5 points if a street is on a bike route.
 10 points for collision history on a street.
 Points total to 100.



**PROPOSED
SPEED
HUMP**


City of Columbia, Missouri
 Department of Public Works

**HERITAGE MEADOWS
 PROPOSED TRAFFIC CALMING**

Scale: None	Dwn: C.M.V.	Date: 10/26/2012
-------------	-------------	------------------