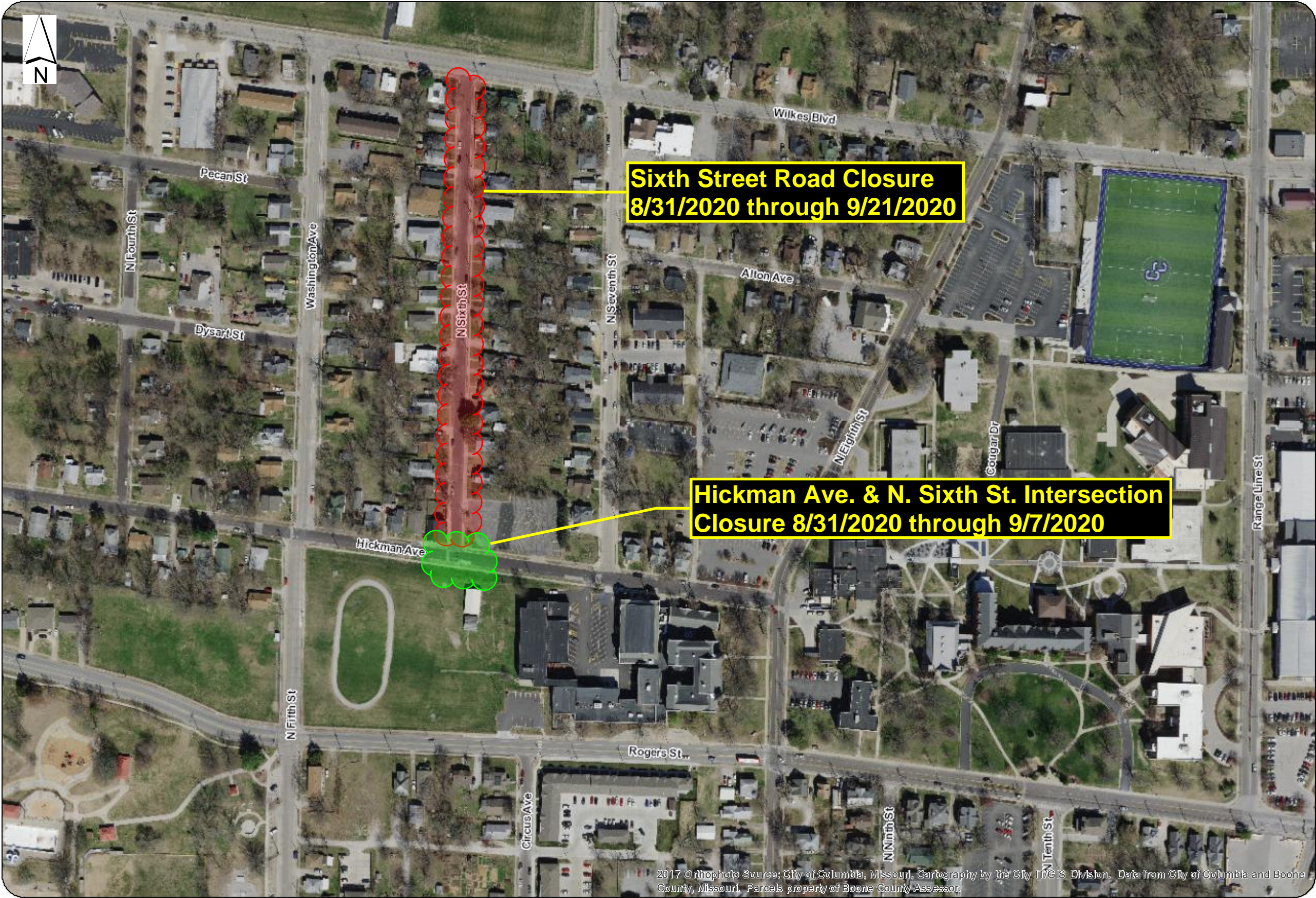


N. Sixth St. & Hickman Ave. Closure



DATA FROM CITY OF COLUMBIA AND BOONE COUNTY, MISSOURI. PARCELS PROPERTY OF BOONE COUNTY ASSESSOR. THE CITY OF COLUMBIA DOES NOT WARRANT OR GUARANTEE THE ACCURACY, CONTENT, QUALITY, RELIABILITY, FITNESS, COMPLETENESS OR TIMELINESS OF ANY SPATIAL DATA OR ITS ATTRIBUTES. DATA ARE "AS IS" AND WITHOUT WARRANTY EXPRESS OR IMPLIED. USER ASSUMES ALL RISK IN THE USE OF AND RELIANCE UPON ANY INFORMATION CONTAINED THEREIN.