

**MAPLEWOOD HOME AND BUILDINGS**

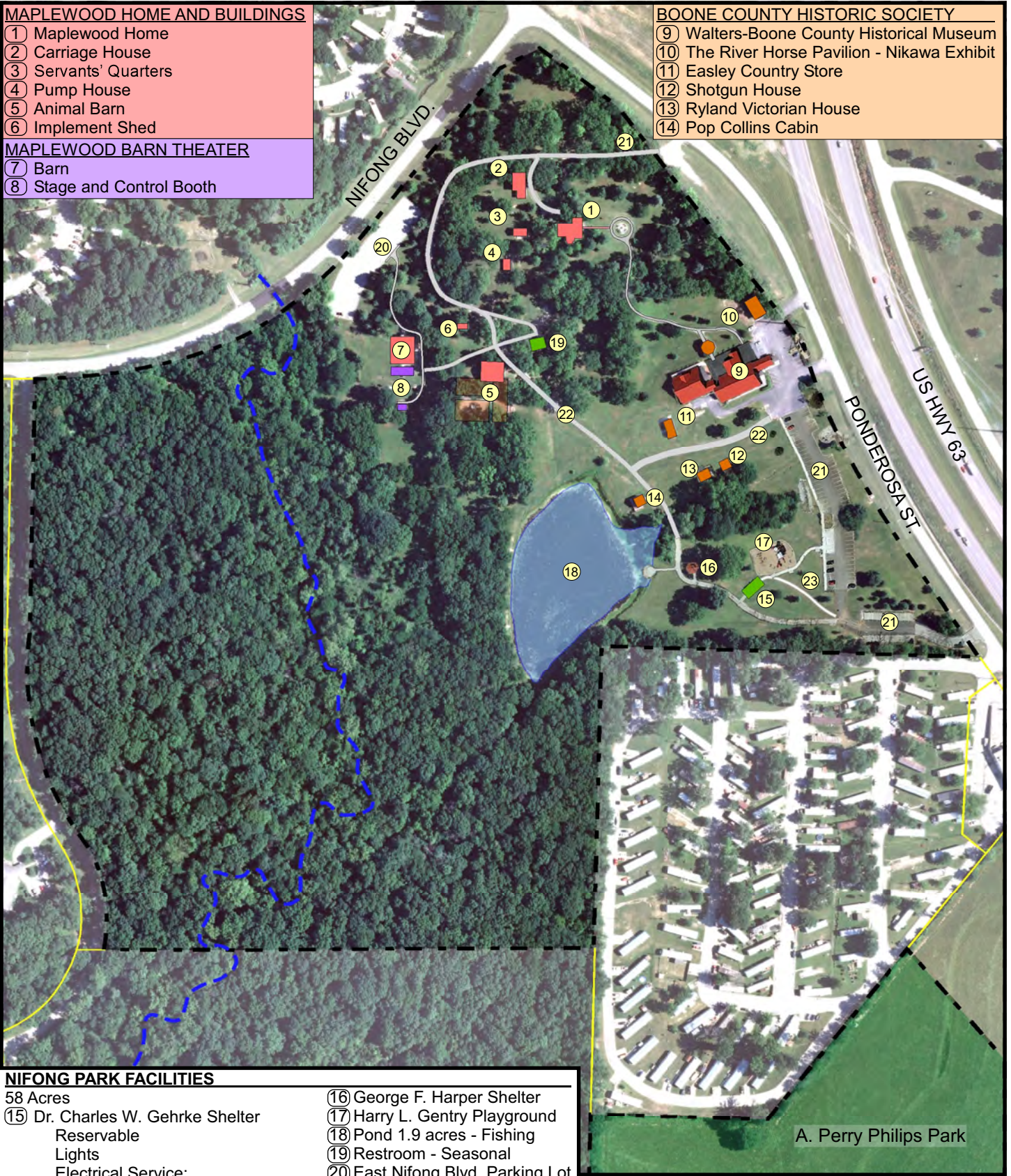
- ① Maplewood Home
- ② Carriage House
- ③ Servants' Quarters
- ④ Pump House
- ⑤ Animal Barn
- ⑥ Implement Shed

**MAPLEWOOD BARN THEATER**

- ⑦ Barn
- ⑧ Stage and Control Booth

**BOONE COUNTY HISTORIC SOCIETY**

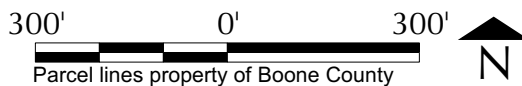
- ⑨ Walters-Boone County Historical Museum
- ⑩ The River Horse Pavilion - Nikawa Exhibit
- ⑪ Easley Country Store
- ⑫ Shotgun House
- ⑬ Ryland Victorian House
- ⑭ Pop Collins Cabin



**NIFONG PARK FACILITIES**

- 58 Acres
- ⑮ Dr. Charles W. Gehrke Shelter Reservable  
Lights  
Electrical Service:  
220 Volt Outlet (1)  
110 Volt Duplex Outlets (4)  
Drinking Fountain (ADA)  
1 Double BBQ Grill (ADA)
- ⑯ George F. Harper Shelter
- ⑰ Harry L. Gentry Playground
- ⑱ Pond 1.9 acres - Fishing
- ⑲ Restroom - Seasonal
- ⑳ East Nifong Blvd. Parking Lot  
54 Standard Spaces, 4 ADA Spaces
- ㉑ Ponderosa St. Parking Lots  
92 Standard Spaces, 4 ADA Spaces
- ㉒ Gravel Trail - No Vehicles
- ㉓ Cosmo Corner

# Nifong Park



A. Perry Philips Park

