

City of Columbia

701 East Broadway, Columbia, Missouri 65201



Agenda Item Number: B 291-15

Department Source: Water & Light

To: City Council

From: City Manager & Staff

Council Meeting Date: 10/5/2015

Re: An ordinance accepting the donation of \$2,500 and 25 LED exterior wall sconces from the Downtown CID and appropriating \$2,500 and utilizing 25 donated LED exterior wall sconces for improving lighting in Alley A and the alley North of Broadway.

Documents Included With This Agenda Item

Council memo, Resolution/Ordinance, Exhibits to Resolution/Ordinance

Supporting documentation includes: Maps

Executive Summary

This ordinance allows the Downtown CID to donate \$2,500 and 25 LED exterior wall sconces for improving lighting in Alley A and the alley North of Broadway. Two dusk to dawn lights will also be replaced with LED streetlights as part of this project.

Discussion

The donated \$2,500 will be utilized to pay for the installation of 10 of the donated LED wall scones on the City's parking garage at Eighth and Cherry. These wall scones will improve lighting levels in Alley A and the North-South alley adjacent to the parking garage. 11 LED wall scones will be used to replace existing street lighting in both Alley A and the alley North of Broadway and the remaining 4 will be held in reserve for maintenance purposes. Two existing dusk to dawn lights (Exhibit C) will also be replaced with LED streetlights (Exhibit D) as part of this project, improving the light levels in two parking areas in the alley North of Broadway. A map highlighting the preferred locations of the wall scones and the location of the existing dusk to dawn lights is attached as Exhibit A.

Staff will work with the CID to obtain owner permission prior to the removal of existing City lighting and the installation of the new LED wall scones and dusk to dawn lights. The estimated cost for the removal and replacement of existing City lighting is \$4,000 and will be funded with FY2016 funds already appropriated to project EL0052 for Downtown street lights.

Fiscal Impact

Short-Term Impact: Appropriation of \$2,500 for the installation of 10 LED exterior wall scones on the City's parking garage at Eighth and Cherry and utilizing \$4,000 of FY2016 funds already appropriated for street lighting to replace existing street lighting in both Alley A and the alley North of Broadway.

Long-Term Impact: Energy savings gained by switching from HID street lighting to LED technology.

City of Columbia

701 East Broadway, Columbia, Missouri 65201



Vision, Strategic & Comprehensive Plan Impact

Vision Impact: Community Facilities and Services, Downtown

Strategic Plan Impact: Infrastructure

Comprehensive Plan Impact: Infrastructure

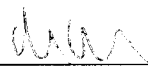
Suggested Council Action

Staff recommends accepting the donation of \$2,500 and 25 LED exterior wall sconces from the Downtown CID and appropriation of \$2,500 for the installation of 10 LED exterior wall sconces on the City's parking garage at Eighth and Cherry and utilizing \$4,000 of FY2016 funds already appropriated for street lighting to replace existing street lighting in both Alley A and the alley North of Broadway as described.

Legislative History

None


Department Approved


City Manager Approved

Introduced by _____

First Reading _____

Second Reading _____

Ordinance No. _____

Council Bill No. B 291-15

AN ORDINANCE

accepting donated funds and twenty-five (25) LED exterior wall sconces from the Downtown Community Improvement District to be used by the Water and Light Department for street light improvements in the downtown area; appropriating funds; and fixing the time when this ordinance shall become effective.

BE IT ORDAINED BY THE COUNCIL OF THE CITY OF COLUMBIA, MISSOURI, AS FOLLOWS:

SECTION 1. The City accepts a \$2,500.00 donation and twenty-five (25) LED exterior wall sconces from the Downtown Community Improvement District to be used by the Water and Light Department for street light improvements in the downtown area.

SECTION 2. The sum of \$2,500.00 is hereby appropriated from Account No. 753-8500-480.53-54 to Account No. 551-7220-881.68-70 EL0052.

SECTION 3. This ordinance shall be in full force and effect from and after its passage.

PASSED this _____ day of _____, 2015.

ATTEST:

City Clerk

Mayor and Presiding Officer

APPROVED AS TO FORM:

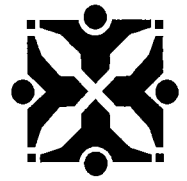
City Counselor

CERTIFICATION: I certify there are sufficient funds available in Account No. 753-8500-480.53-54 to cover the above appropriation.

Director of Finance

City of Columbia

701 East Broadway, Columbia, Missouri 65201



SUPPORTING DOCUMENTS INCLUDED WITH
THIS AGENDA ITEM ARE AS FOLLOWS:

Maps

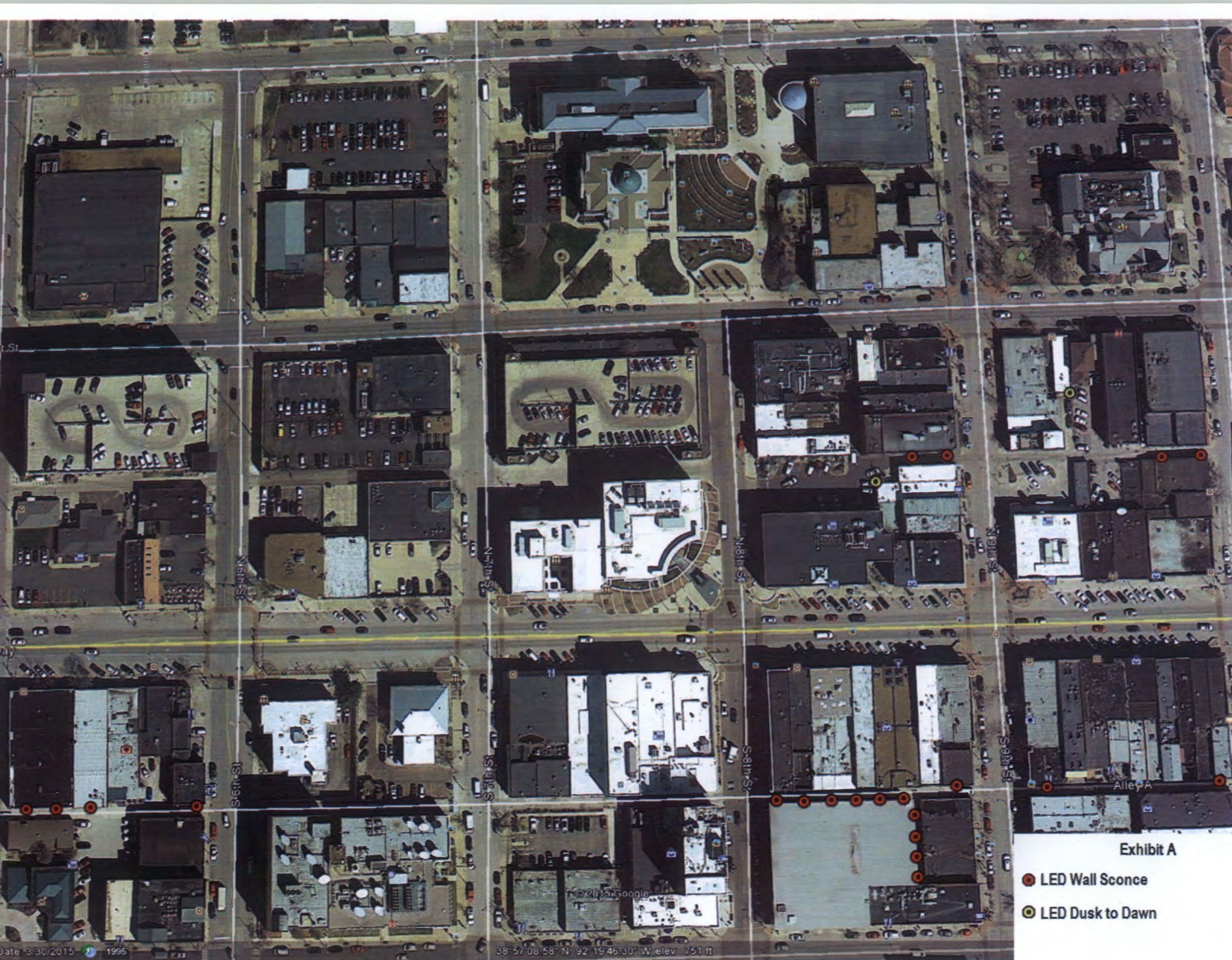


Exhibit A

- LED Wall Sconce
- LED Dusk to Dawn

SLIM18

12, 18 and 26 Watt SLIM wallpacks are ultra efficient and deliver impressive light distribution with a compact low-profile design that's super easy to install as a downlight or uplight.

LED Info

Watts: 18W
Color Temp: 5100K (Cool)
Color Accuracy: 67
L70 Lifespan: 100000
LM79 Lumens: 2096
Efficacy: 105 LPW

Driver Info

Type: Constant Current
120V: 0.18A
208V: 0.11A
240V: 0.09A
277V: 0.08A
Input Watts: 20W
Efficiency: 90%

Technical Specifications

UL Listing:

Suitable for wet locations. Suitable for mounting within 1.2m (4ft) of the ground.

IP Rating:

Ingress Protection rating of IP66 for dust and water.

LED:

Multi-chip, long-life LED.

Lifespan:

100,000-hour LED lifespan based on IES LM-80 results and TM-21 calculations.

Driver:

Constant Current, Class 2, 100-277V, 50/60 Hz., 4KV surge protection, 500mA, 100-240VAC 0.3-0.15 Amps, 277VAC 0.15 Amps, Power Factor 99%.

THD:

9.8% at 120V

Cold Weather Starting:

The minimum starting temperature is -40°F/-40°C.

Ambient Temperature:

Suitable for use in 40°C (104°F) ambient temperatures.

Thermal Management:

Superior heat sinking with internal Air-Flow fins.

Housing:

Precision die-cast aluminum housing.

Mounting:

Heavy-duty mounting bracket with hinged housing for easy installation.

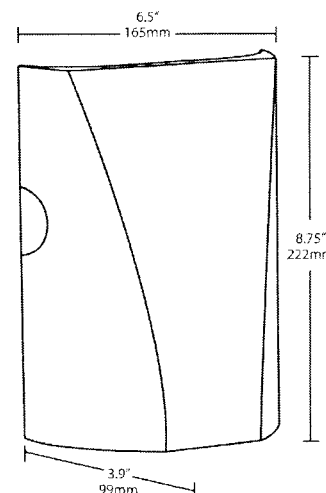
Recommended Mounting Height:

Up to 14 ft.

EXHIBIT B

Color: Bronze

Weight: 4.5 lbs



HID Replacement Range:

The SLIM18 can be used to replace 100W MH based on delivered lumens.

Lens:

Tempered glass lens.

Reflector:

Specular thermoplastic.

Gaskets:

High-temperature silicone.

Finish:

Our environmentally friendly polyester powder coatings are formulated for high-durability and long-lasting color, and contains no VOC or toxic heavy metals.

ADA Compliant:

SLIM™ is ADA Compliant.

DLC Listed:

This product is on the Design Lights Consortium (DLC) Qualified Products List and is eligible for rebates from DLC Member Utilities.

Dark Sky Approved:

The International Dark Sky Association has approved this product as a full cutoff, fully shielded luminaire.

Color Consistency:

7-step MacAdam Ellipse binning to achieve consistent fixture-to-fixture color.

Color Stability:

LED color temperature is warrantied to shift no more than 200K in CCT over a 5 year period.

Color Uniformity:

RAB's range of CCT (Correlated Color Temperature) follows the guidelines for the American National Standard for Specifications for the Chromaticity of Solid State Lighting (SSL) Products, ANSI C78.377-2011.

Green Technology:

Mercury and UV free, and RoHS compliant.

California Title 24:

SLIM18 complies with 2013 California Title 24 building and electrical codes as a residential outdoor fixture. See SLIM18/PC for a model that complies as a commercial outdoor non-pole-mounted fixture ≤ 30 Watts.

IESNA LM-79 & LM-80 Testing:

RAB LED luminaires have been tested by an independent laboratory in accordance with IESNA LM-79 and LM-80, and have received the Department of Energy "Lighting Facts" label.

Patents:

The design of the SLIM™ is protected by patents in U.S. Pat D681,864, and pending patents in Canada, China, Taiwan and Mexico.

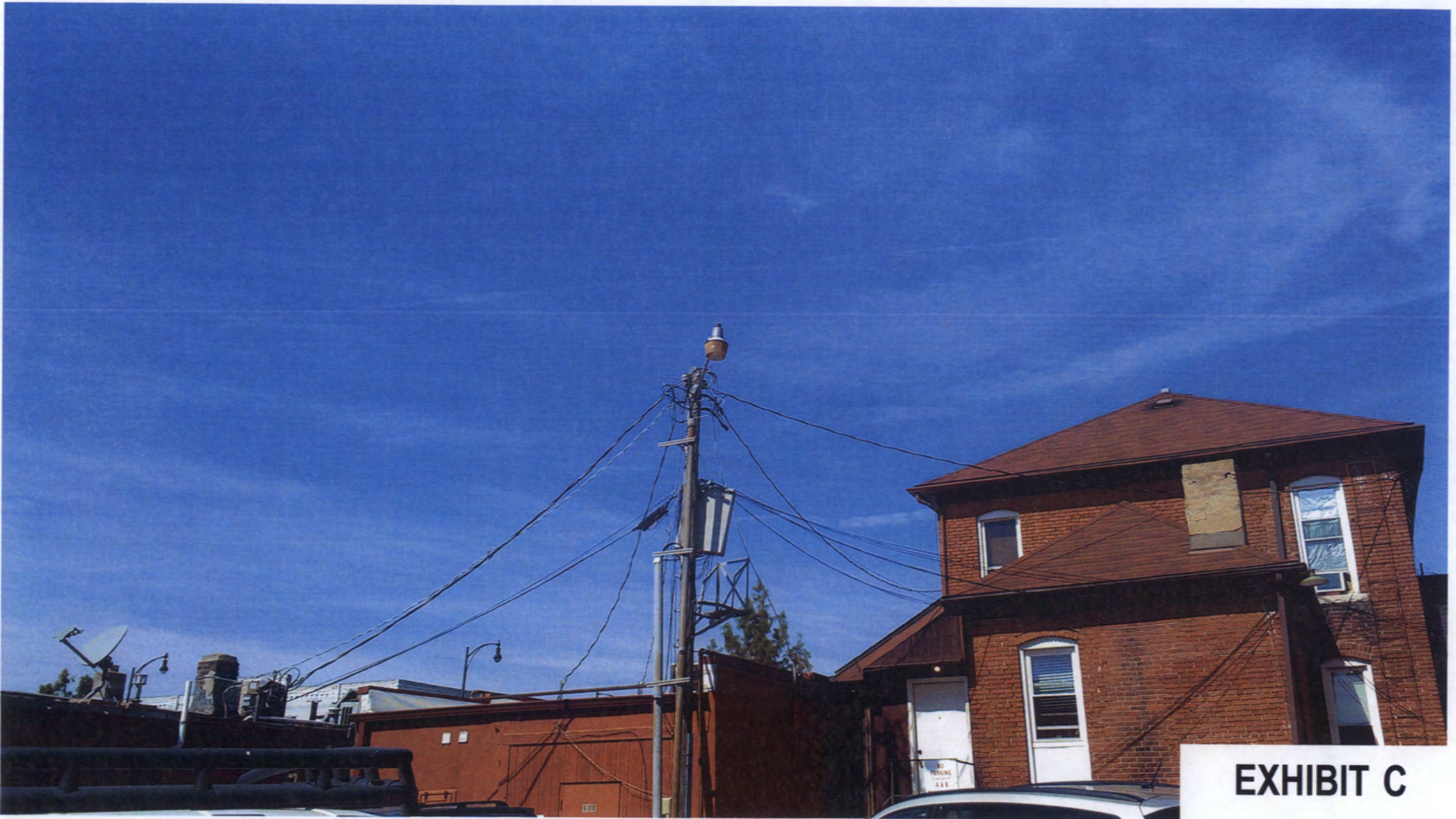


EXHIBIT C

Configuration Flexibility

Performance and Versatility

The Navion luminaire is built around LED technology and designed to accommodate ongoing improvements in LED chips and drivers, making it the ideal solution for both current and future lighting requirements.



Pedestrian Pathway

The Navion luminaire's enhanced lighting performance and uniformity provides a safe and secure environment for pedestrians while improving energy efficiency.



Commercial

The Navion luminaire offers a long life and additional savings in maintenance costs packaged in a modern design for commercial applications, such as office buildings and shopping centers.



Industrial

Illuminating large areas without unnecessary glare or light spillage, while controlling the light distribution, makes the Navion luminaire an ideal solution for industrial applications, such as manufacturing and distribution.

Exhibit D