

City of Columbia

701 East Broadway, Columbia, Missouri 65201



Agenda Item Number: R 206-14

Department Source: Public Works

To: City Council

From: City Manager & Staff

Council Meeting Date: November 3, 2014

Re: Allowing Columbia College to Temporarily Close a Portion of Sidewalk on the South Side of Wilkes Boulevard

Documents Included With This Agenda Item

Council Memo, Resolution/Ordinance, Exhibits to Resolution/Ordinance

Supporting documentation includes: Map

Executive Summary

Authorizing Columbia College to temporarily close a portion of sidewalk on the south side of Wilkes Boulevard between N Eighth Street and Rangeline Street to facilitate reconstruction of the Columbia College soccer field.

Discussion

Columbia College is seeking permission to temporarily close approximately 500 linear feet of sidewalk on the south side of Wilkes Boulevard between N Eighth Street and Rangeline Street. The work will begin November 17, 2014 and shall be completed by January 19, 2015. College College is making improvements to their soccer field located on the corner of Wilkes Boulevard and Rangeline Street.

Staff has reviewed the attached traffic control plan and has no issues with their request. Columbia College shall be responsible for all signs and barricades necessary for the protection and convenience of the general public, and shall be responsible for notifications to the media and emergency personnel.

Fiscal Impact

Short-Term Impact: None

Long-Term Impact: None

Vision, Strategic & Comprehensive Plan Impact

Vision Impact: Not Applicable

Strategic Plan Impact: Not Applicable

Comprehensive Plan Impact: Not Applicable

City of Columbia

701 East Broadway, Columbia, Missouri 65201



Suggested Council Action

Authorize the temporary closure of 500 linear feet of the sidewalk on the south side of Wilkes Boulevard between N Eighth Street and Rangeline Street to facilitate reconstruction of the Columbia College soccer field.

Legislative History

None



Department Approved



City Manager Approved

Introduced by _____ Council Bill No. R 206-14

A RESOLUTION

authorizing the temporary closure of a portion of the sidewalk along the south side of Wilkes Boulevard, between Eighth Street and Rangeline Street, to allow for the reconstruction of the Columbia College soccer field.

BE IT RESOLVED BY THE CITY COUNCIL OF THE CITY OF COLUMBIA, MISSOURI, AS FOLLOWS:

SECTION 1. The City Council hereby authorizes Columbia College to temporarily close a portion of the sidewalk on the south side of Wilkes Boulevard, between Eighth Street and Rangeline Street, as shown on "Exhibit A," from November 17, 2014 to January 19, 2015 to allow for the reconstruction of a soccer field.

SECTION 2. Columbia College shall close the sidewalk only in accordance with the traffic control plan submitted and approved by the City's Director of Public Works. In the interest of public safety, the Director of Public Works may require additional traffic control measures by notifying Columbia College, in writing, of such requirements. Columbia College shall be responsible for all signs and barricades necessary for the protection and convenience of the general public and shall be responsible for the repair of the sidewalk due to any damage caused by the construction activity. Columbia College shall be responsible for notifications to the media and emergency personnel.

SECTION 3. Columbia College shall proceed with construction activities which require the temporary sidewalk closure without unnecessary delay so as to minimize disruption to the public. Failure to proceed without unnecessary delay may result in the revocation of the sidewalk closure permit by the City Council.

ADOPTED this _____ day of _____, 2014.

ATTEST:

City Clerk

Mayor and Presiding Officer

APPROVED AS TO FORM:

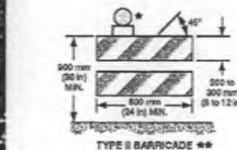
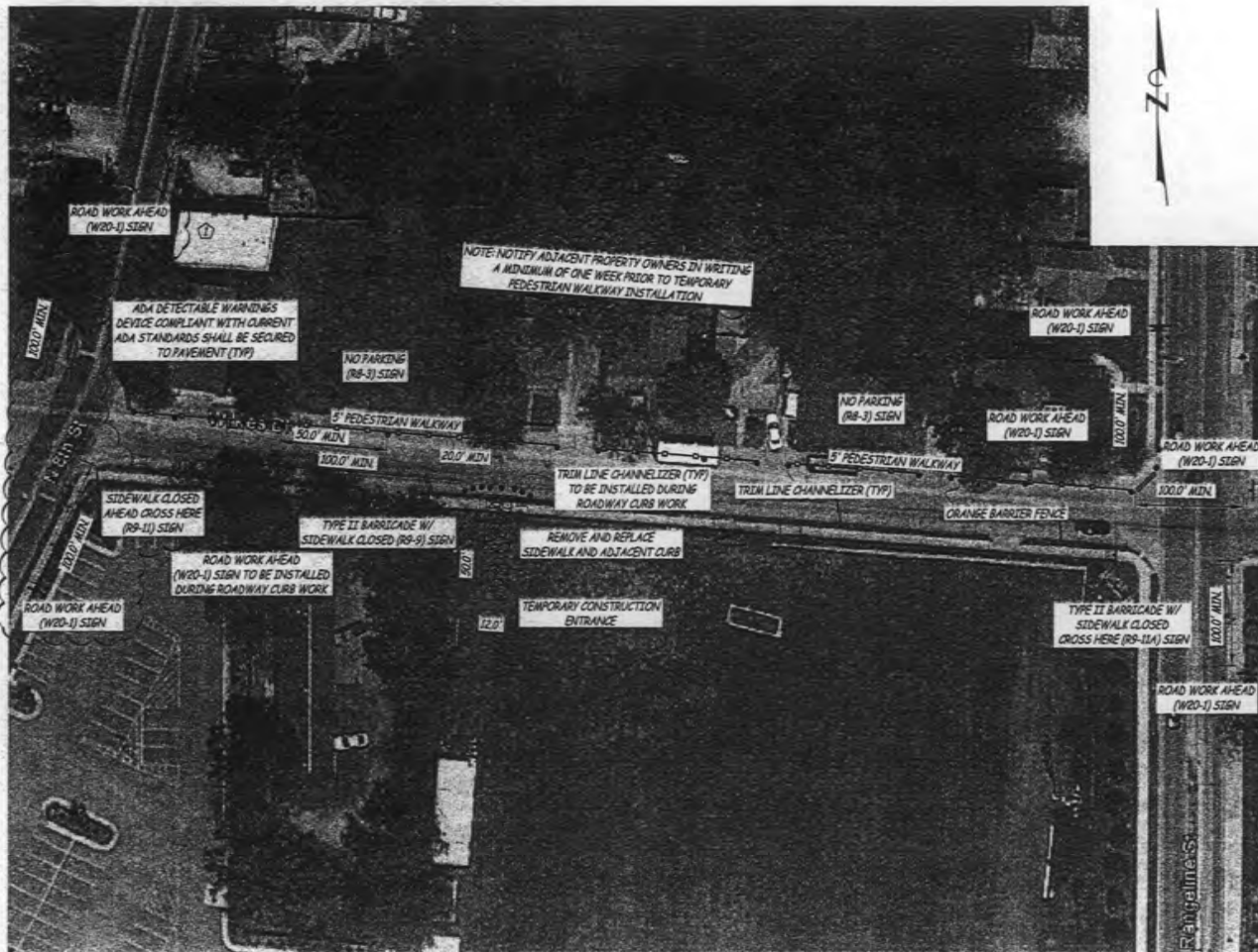
City Counselor





SUPPORTING DOCUMENTS INCLUDED WITH THIS AGENDA ITEM ARE AS FOLLOWS:

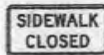
Map



** Rail stripe widths shall be 150 mm (6 in), except that 100 mm (4 in) wide stripes may be used if rail lengths are less than 900 mm (36 in). The sides of barricades facing traffic shall have retroreflective rail faces.



"ROAD WORK AHEAD" SIGN



R9-9
"SIDEWALK CLOSED" SIGN
NOT TO SCALE



R9-11
"SIDEWALK CLOSED
AHEAD CROSS HERE" SIGN
NOT TO SCALE



R9-11a
"SIDEWALK CLOSED
CROSS HERE" SIGN
NOT TO SCALE



RB-3
"NO PARKING" SIGN
NOT TO SCALE

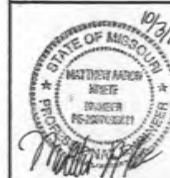


Engineering Surveys and Services

1113 Fay Street, Columbia, Missouri 65201
573-449-2646 • www.BSS-Ins.com

Other Offices:
Jefferson City, Missouri - Sedalia, Missouri
Missouri Engineering Corporation # 70046750118

COLUMBIA COLLEGE
SOCCER FIELD
RANGELINE STREET
COLUMBIA, BOONE COUNTY, MISSOURI



MATTHEW A. KRIETE
PROFESSIONAL ENGINEER
PE-2007002811

Date
SEPTEMBER 19, 2014

Revised
1 OCTOBER 3, 2014

Design: SH Drawn: SH

TEMPORARY TRAFFIC CONTROL PLAN

Sheet

C1.01

ESAS PROJECT NO. 12821

**Sidewalk along south
side of Wilkes Boulevard**

**Location of
sidewalk closure**

