

PREVIOUSLY APPROVED

PRELIMINARY PLAT
BLUFF CREEK ESTATES PHASE I

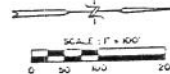
APRIL 30, 1992
REVISED: 21 MAY '92
23 MAY '92
27 MAY '92

EXISTING UTILITIES

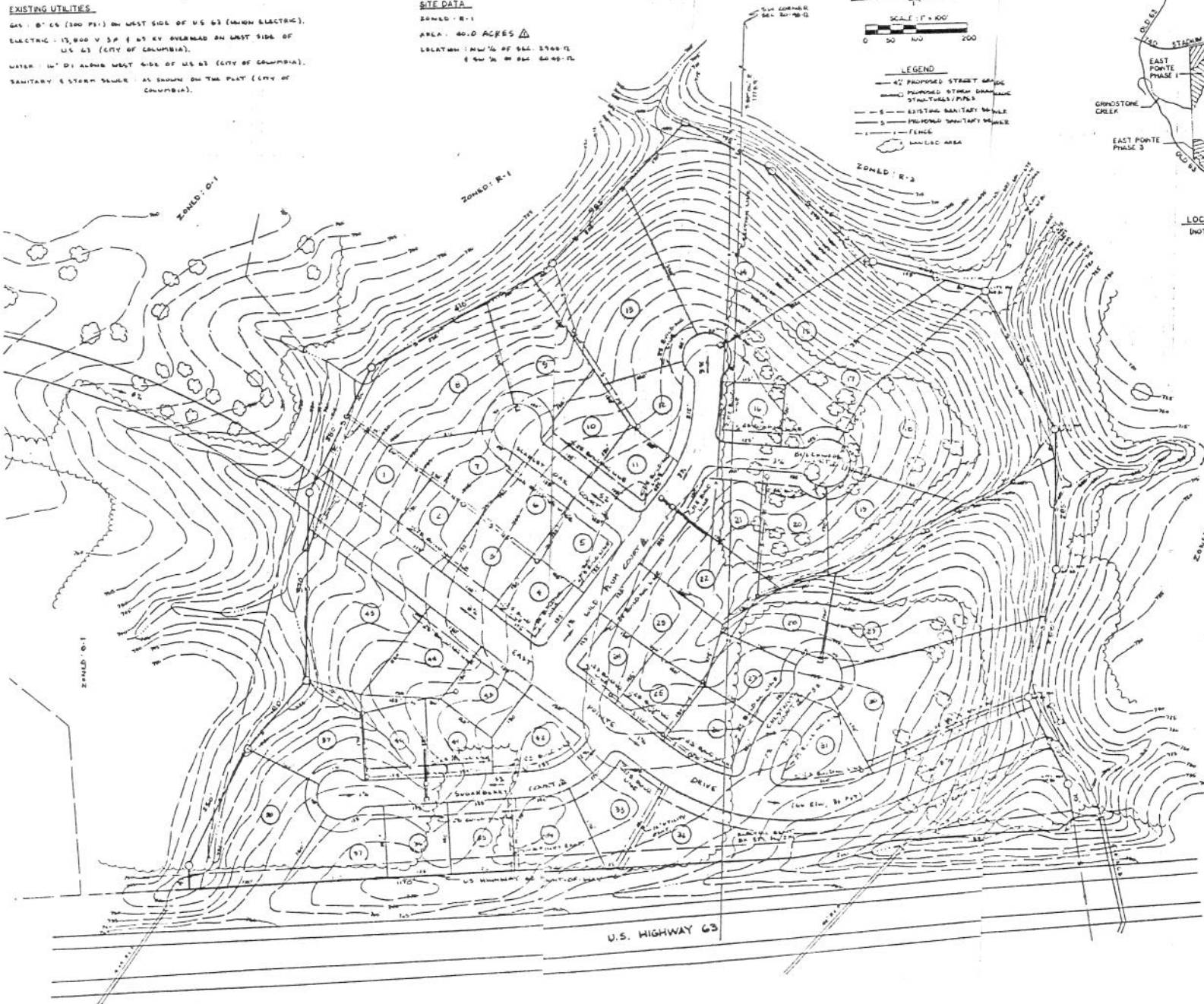
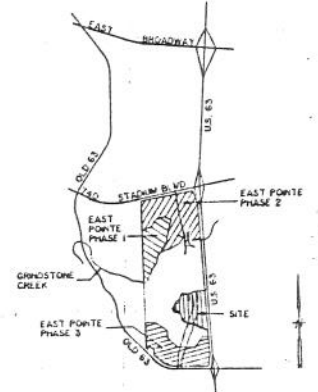
GA: 6" CS (200 PSI) ON WEST SIDE OF US 63 (UNDER ELECTRIC).
ELECTRIC: 15,000 V SP & 65 KV OVERHEAD ON WEST SIDE OF
US 63 (CITY OF COLUMBIA).
WATER: 16" DI ALONG WEST SIDE OF US 63 (CITY OF COLUMBIA).
SANITARY & STORM SEWER: AS SHOWN ON THE PLAT (CITY OF COLUMBIA).

SITE DATA

BOUNDED: R-1
AREA: 40.0 ACRES
LOCATION: NW 1/4 OF SEC. 29 AND T1
R 9W 3N OF SW 20-45-15



- LEGEND
- 4" PUMPED STREET GROUND
 - PUMPED STREET DRAINAGE
 - STRAIGHT/PIPS
 - EXISTING SANITARY DRAINAGE
 - PUMPED SANITARY DRAINAGE
 - FENCE
 - UN-DEVELOPED AREA



OWNER/DEVELOPER
B & S INVESTMENTS, INC.
ROUTE 1-70 DRIVE SW
COLUMBIA, MO 65502
(314) 445-8331

RECEIVED
MAY 28 1992
DEPARTMENT OF PLANNING

PREPARED BY
ALLSTATE CONSULTANTS
1107 VANDERBILT DRIVE
COLUMBIA, MO 65202
(314) 445-8331

PLAT NO. 1
L.S. 2009